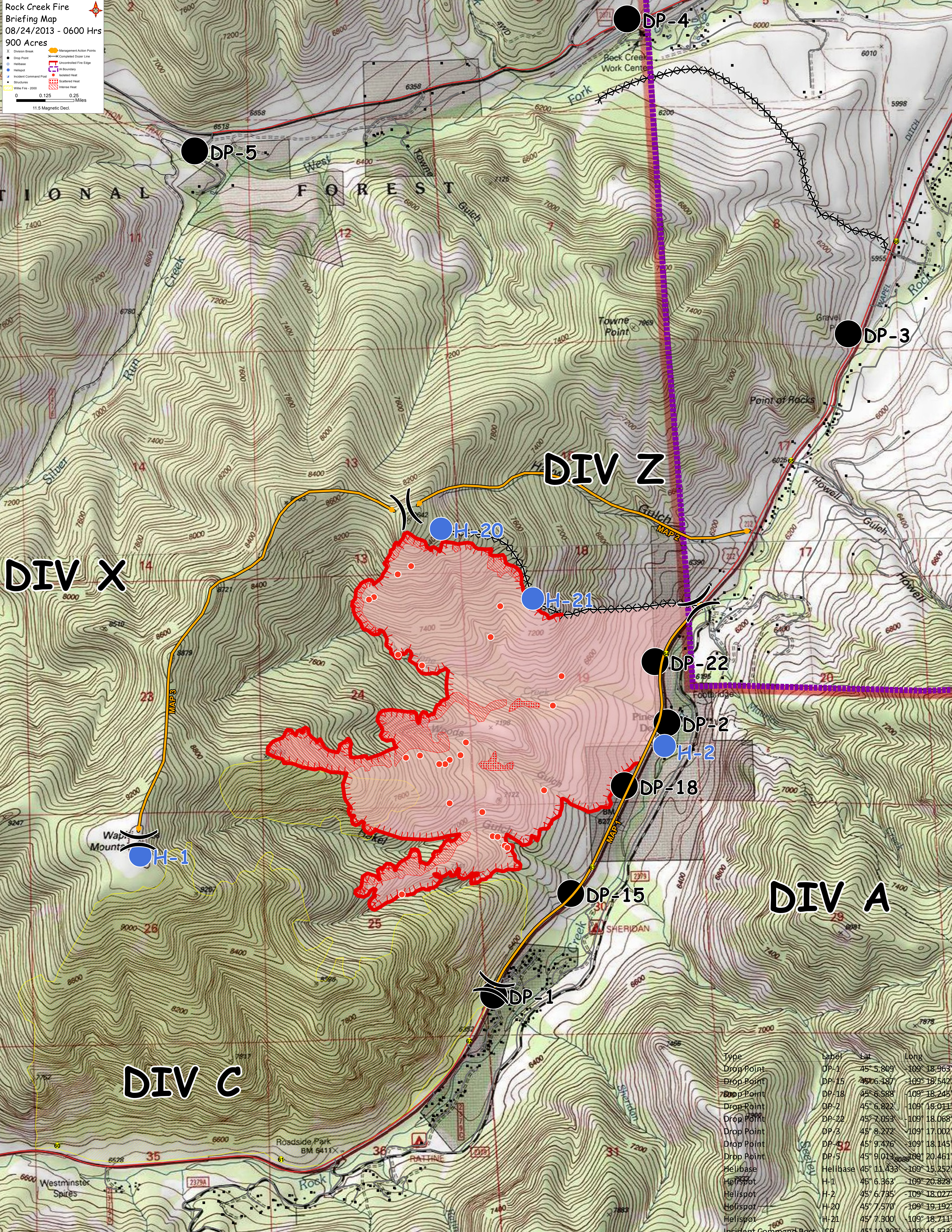


Rock Creek Fire
 Briefing Map
 08/24/2013 - 0600 Hrs
 900 Acres

- Division Break
- Drop Point
- Helibase
- Helispot
- Incident Command Post
- Structures
- Wild Fire - 2000
- Management Action Points
- Completed Dozer Line
- Uncontrolled Fire Edge
- US Boundary
- Isolated Heat
- Scattered Heat
- Intense Heat



Type	Label	Lat	Long
Drop Point	DP-1	45° 5.809'	-109° 18.963'
Drop Point	DP-15	45° 6.487'	-109° 18.542'
Drop Point	DP-18	45° 6.588'	-109° 18.245'
Drop Point	DP-2	45° 6.822'	-109° 18.011'
Drop Point	DP-22	45° 7.053'	-109° 18.068'
Drop Point	DP-3	45° 8.272'	-109° 17.002'
Drop Point	DP-4	45° 9.476'	-109° 18.145'
Drop Point	DP-5	45° 9.013'	-109° 20.461'
Helibase	Helibase	45° 11.433'	-109° 15.252'
Helispot	H-1	45° 6.363'	-109° 20.823'
Helispot	H-2	45° 6.735'	-109° 18.027'
Helispot	H-20	45° 7.570'	-109° 19.192'
Helispot	H-21	45° 7.900'	-109° 18.711'
Incident Command Post	ICP	45° 10.805'	-109° 15.533'