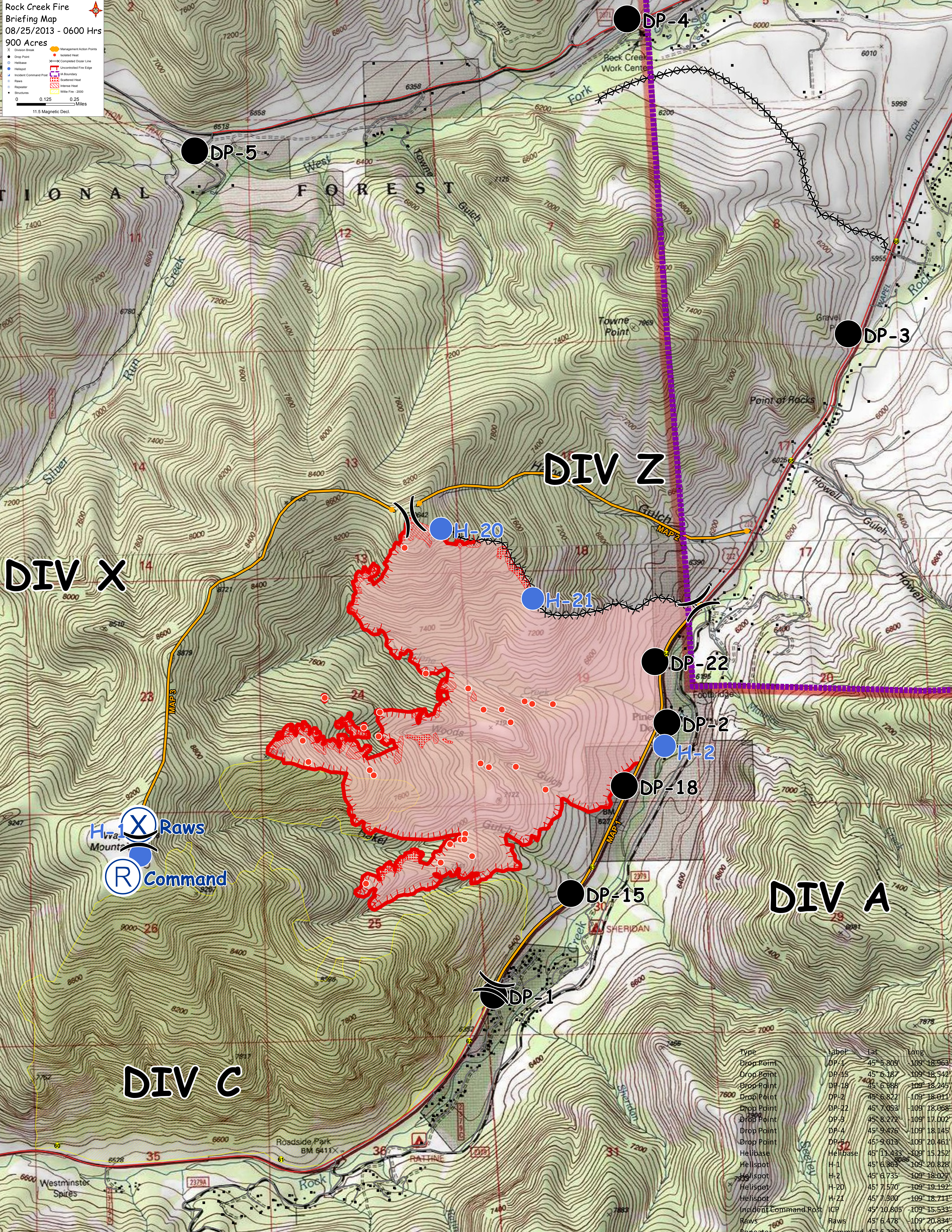


Rock Creek Fire
Briefing Map
 08/25/2013 - 0600 Hrs
 900 Acres

X Division Break
 ● Drop Point
 ● Helibase
 ● Helispot
 ● Incident Command Post
 ● Raws
 ● Repeater
 ● Structures

● Management Action Points
 ● Isolated Heat
 ● Completed Dozer Line
 ● Uncontrolled Fire Edge
 ● Fire Boundary
 ● Burned Heat
 ● Active Heat
 ● Wildfire - 2000

0 0.125 0.25 Miles
 11.5 Magnetic Decl.



H-1 X Raws
 Mount
 R Command

Type	Label	Lat	Long
Drop Point	DP-1	45° 5.809'	-109° 18.963'
Drop Point	DP-15	45° 6.187'	-109° 18.542'
Drop Point	DP-18	45° 6.588'	-109° 18.245'
Drop Point	DP-2	45° 6.822'	-109° 18.011'
Drop Point	DP-22	45° 7.053'	-109° 18.058'
Drop Point	DP-3	45° 8.273'	-109° 17.002'
Drop Point	DP-4	45° 9.476'	-109° 18.145'
Drop Point	DP-5	45° 9.013'	-109° 20.461'
Helibase	Helibase	45° 11.433'	-109° 15.252'
Helispot	H-1	45° 6.363'	-109° 20.828'
Helispot	H-2	45° 6.735'	-109° 18.027'
Helispot	H-20	45° 7.570'	-109° 19.192'
Helispot	H-21	45° 7.300'	-109° 18.711'
Incident Command Post	ICP	45° 10.805'	-109° 15.533'
Raws	Raws	45° 6.478'	-109° 20.834'
Repeater	Command	45° 6.285'	-109° 20.923'