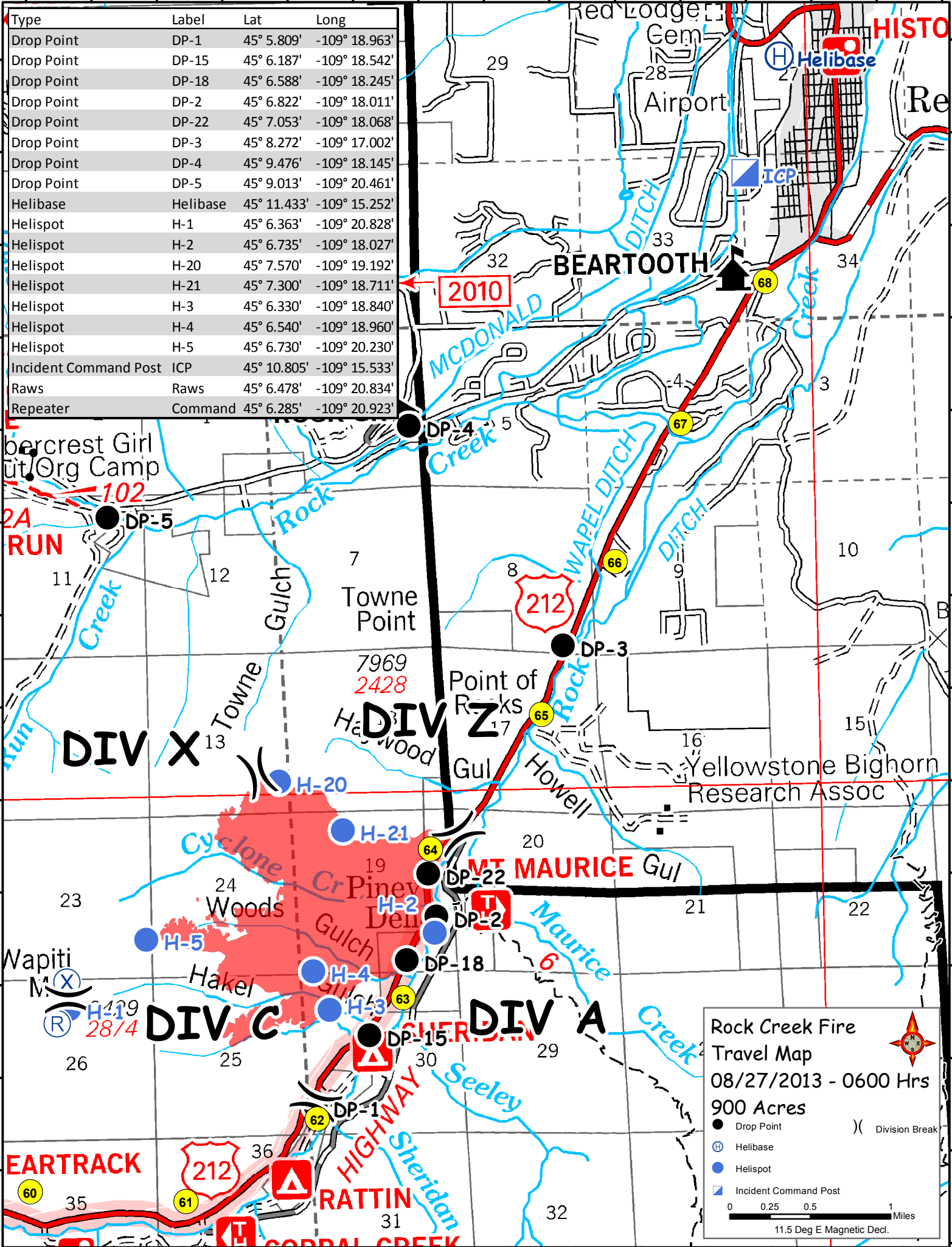


Type	Label	Lat	Long
Drop Point	DP-1	45° 5.809'	-109° 18.963'
Drop Point	DP-15	45° 6.187'	-109° 18.542'
Drop Point	DP-18	45° 6.588'	-109° 18.245'
Drop Point	DP-2	45° 6.822'	-109° 18.011'
Drop Point	DP-22	45° 7.053'	-109° 18.068'
Drop Point	DP-3	45° 8.272'	-109° 17.002'
Drop Point	DP-4	45° 9.476'	-109° 18.145'
Drop Point	DP-5	45° 9.013'	-109° 20.461'
Helibase	Helibase	45° 11.433'	-109° 15.252'
Helispot	H-1	45° 6.363'	-109° 20.828'
Helispot	H-2	45° 6.735'	-109° 18.027'
Helispot	H-20	45° 7.570'	-109° 19.192'
Helispot	H-21	45° 7.300'	-109° 18.711'
Helispot	H-3	45° 6.330'	-109° 18.840'
Helispot	H-4	45° 6.540'	-109° 18.960'
Helispot	H-5	45° 6.730'	-109° 20.230'
Incident Command Post	ICP	45° 10.805'	-109° 15.533'
Raws	Raws	45° 6.478'	-109° 20.834'
Repeater	Command	45° 6.285'	-109° 20.923'



2010

DIV X

DIV Z

DIV C

DIV A

EARTRACK

RATTIN

HISTO

BEARTOOTH

DIV Y

MT MAURICE

SHERIDAN

Rock Creek Fire
 Travel Map
 08/27/2013 - 0600 Hrs
 900 Acres

● Drop Point
 ⊕ Helibase
 ● Helispot
 ⊠ Incident Command Post

0 0.25 0.5 1 Miles
 11.5 Deg E Magnetic Decl.