



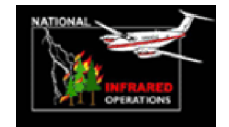
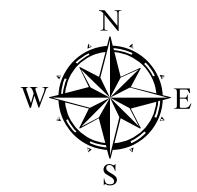
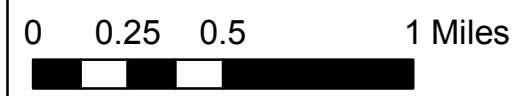
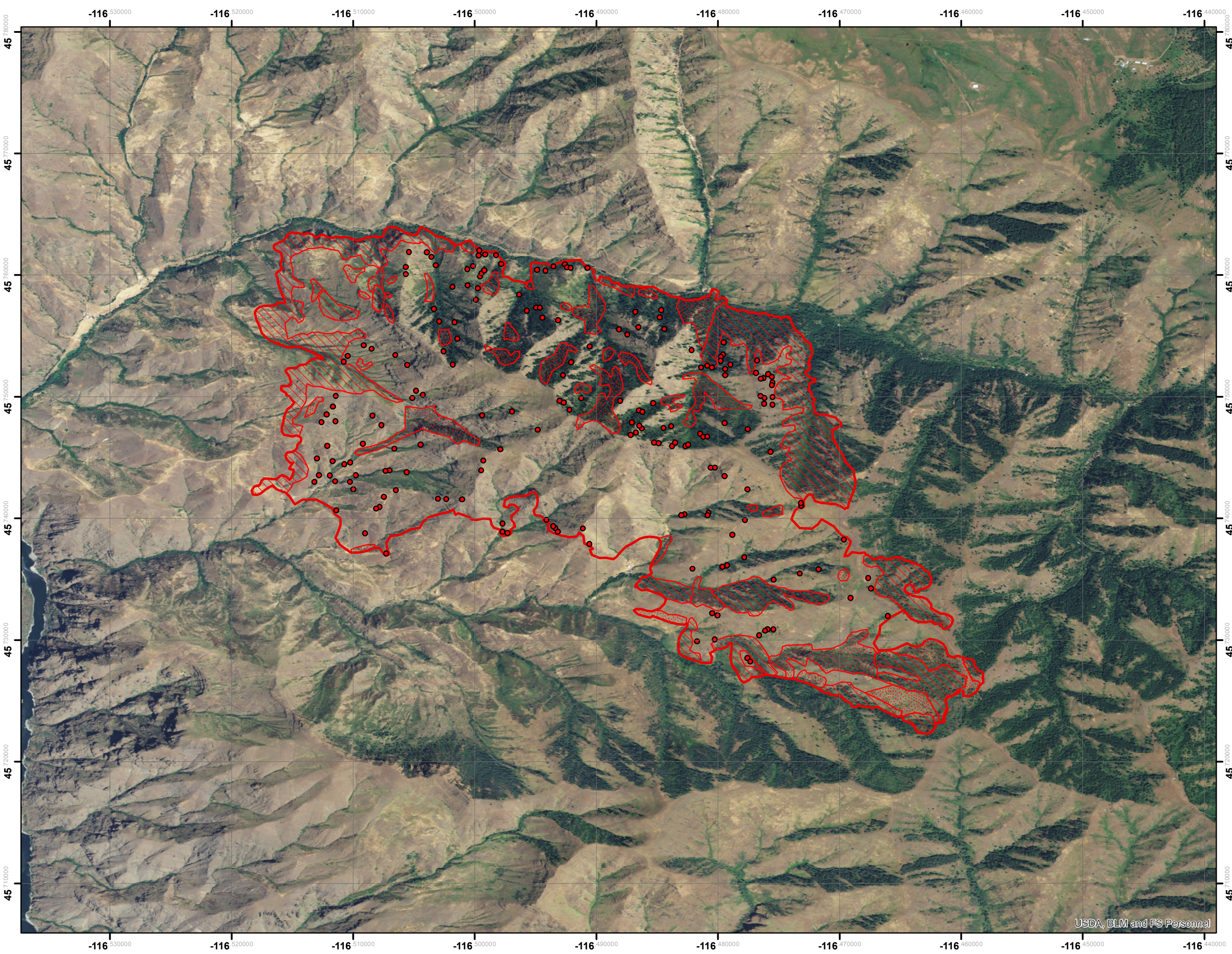


# Highrange Fire Infrared Heat Sources

1:32,000

-  Heat Perimeter
-  Intense Heat Areas
-  Scattered Heat Areas
-  Isolated Heat Sources

GCS North American 1983



IR Interpreter: Brian Monroe  
IR interpreted acres: 2,605  
Date: 8/6/2014  
Time received the Image: 2056 hrs

USDA, BLM and FS Personnel