



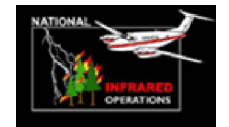
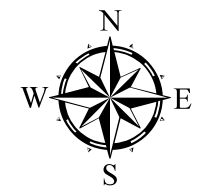
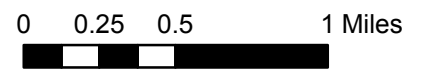
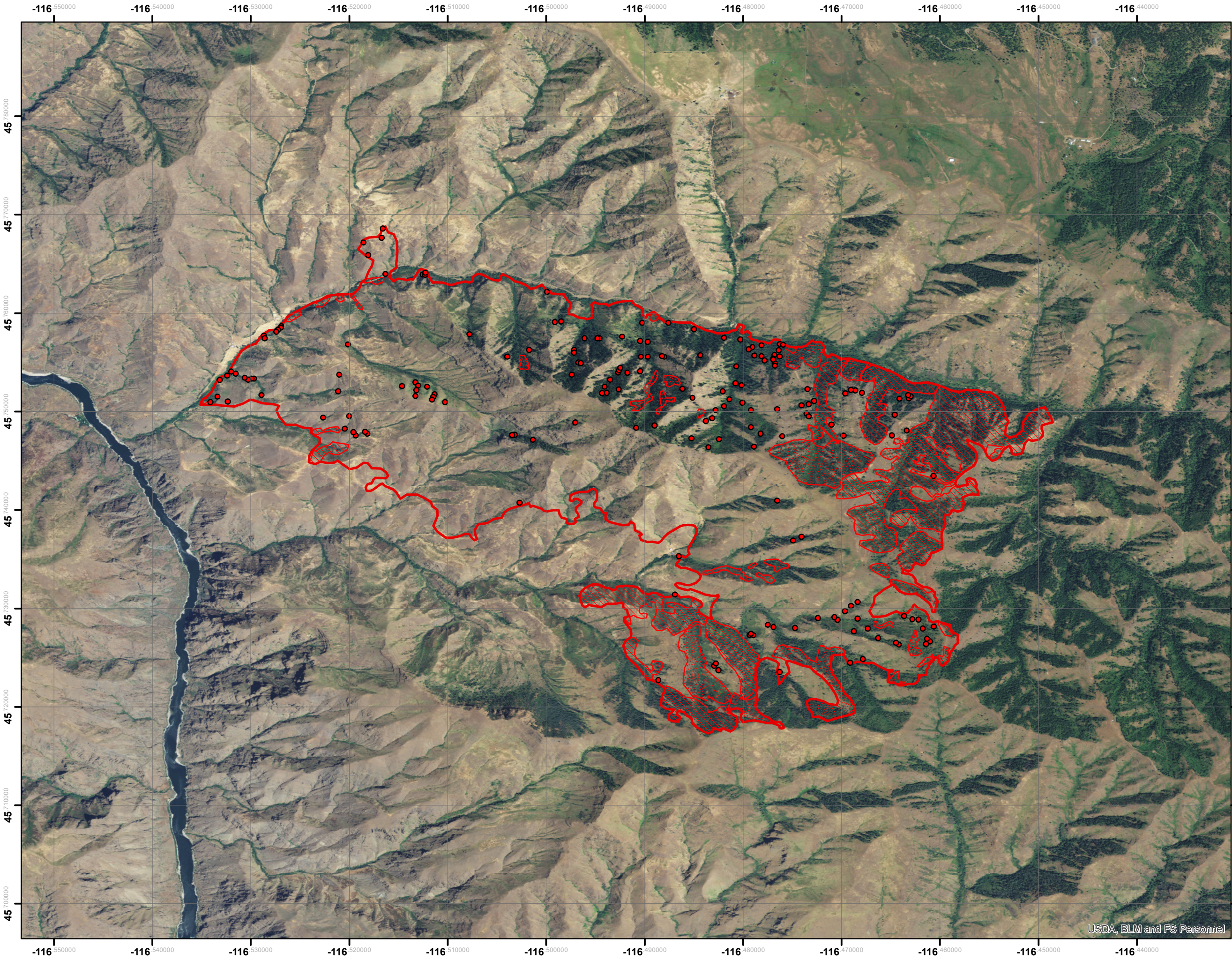


# Highrange Fire Infrared Heat Sources

1:40,000

-  Heat Perimeter
-  Intense Heat Areas
-  Scattered Heat Areas
-  Isolated Heat Sources

GCS North American 1983



IR Interpreter: Brian Monroe  
IR interpreted acres: 4,078  
Date: 8/7/2014  
Time received the Image: 0245 hrs

USDA, BLM and FS Personnel