
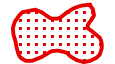



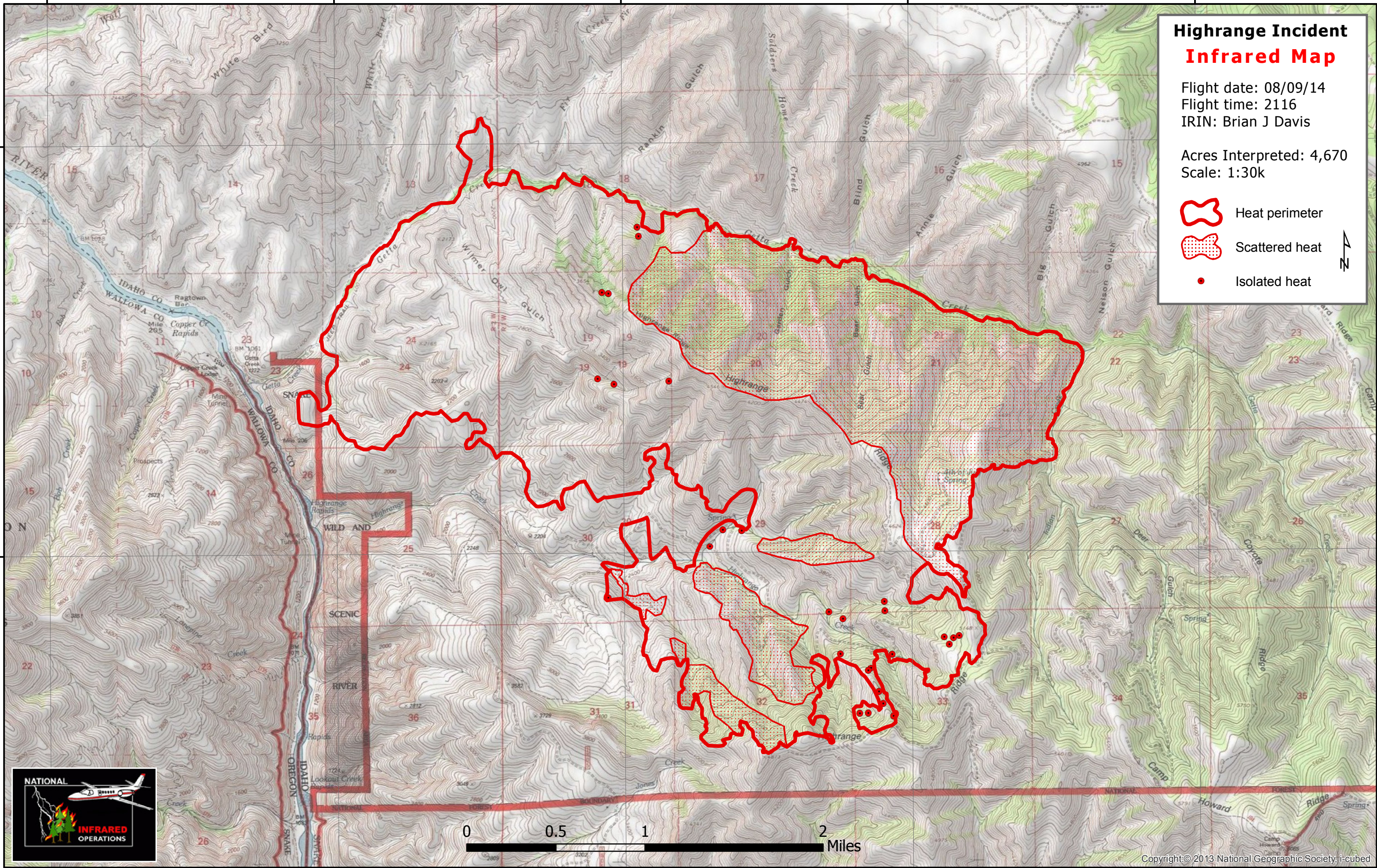
116°34'0"W 116°32'0"W 116°30'0"W 116°28'0"W 116°26'0"W

Highrange Incident Infrared Map

Flight date: 08/09/14
Flight time: 2116
IRIN: Brian J Davis

Acres Interpreted: 4,670
Scale: 1:30k

-  Heat perimeter
-  Scattered heat
-  Isolated heat



45°46'0"N

45°44'0"N

45°46'0"N

45°44'0"N



116°34'0"W 116°32'0"W 116°30'0"W 116°28'0"W 116°26'0"W