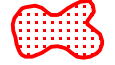




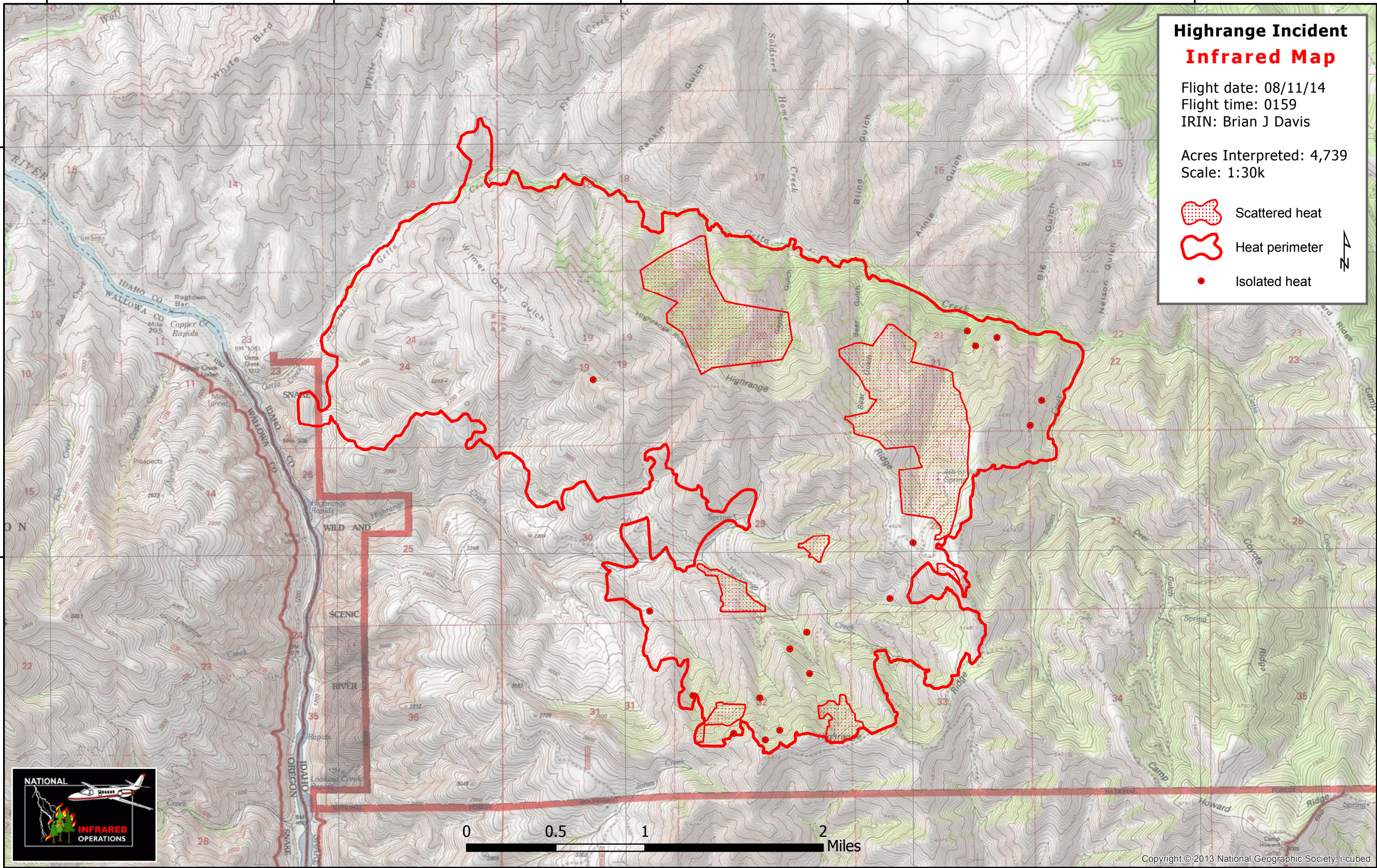
116°34'0"W 116°32'0"W 116°30'0"W 116°28'0"W 116°26'0"W

# Highrange Incident Infrared Map

Flight date: 08/11/14  
Flight time: 0159  
IRIN: Brian J Davis

Acres Interpreted: 4,739  
Scale: 1:30k

-  Scattered heat
-  Heat perimeter
-  Isolated heat



45°46'0"N

45°44'0"N

45°46'0"N

45°44'0"N



116°34'0"W 116°32'0"W 116°30'0"W 116°28'0"W 116°26'0"W