

116°32'0"W

116°30'0"W

116°28'0"W

116°26'0"W

45°46'0"N

45°46'0"N


45°44'0"N


45°44'0"N

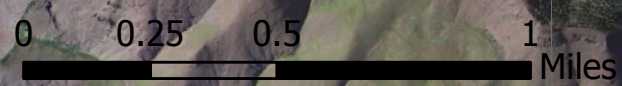
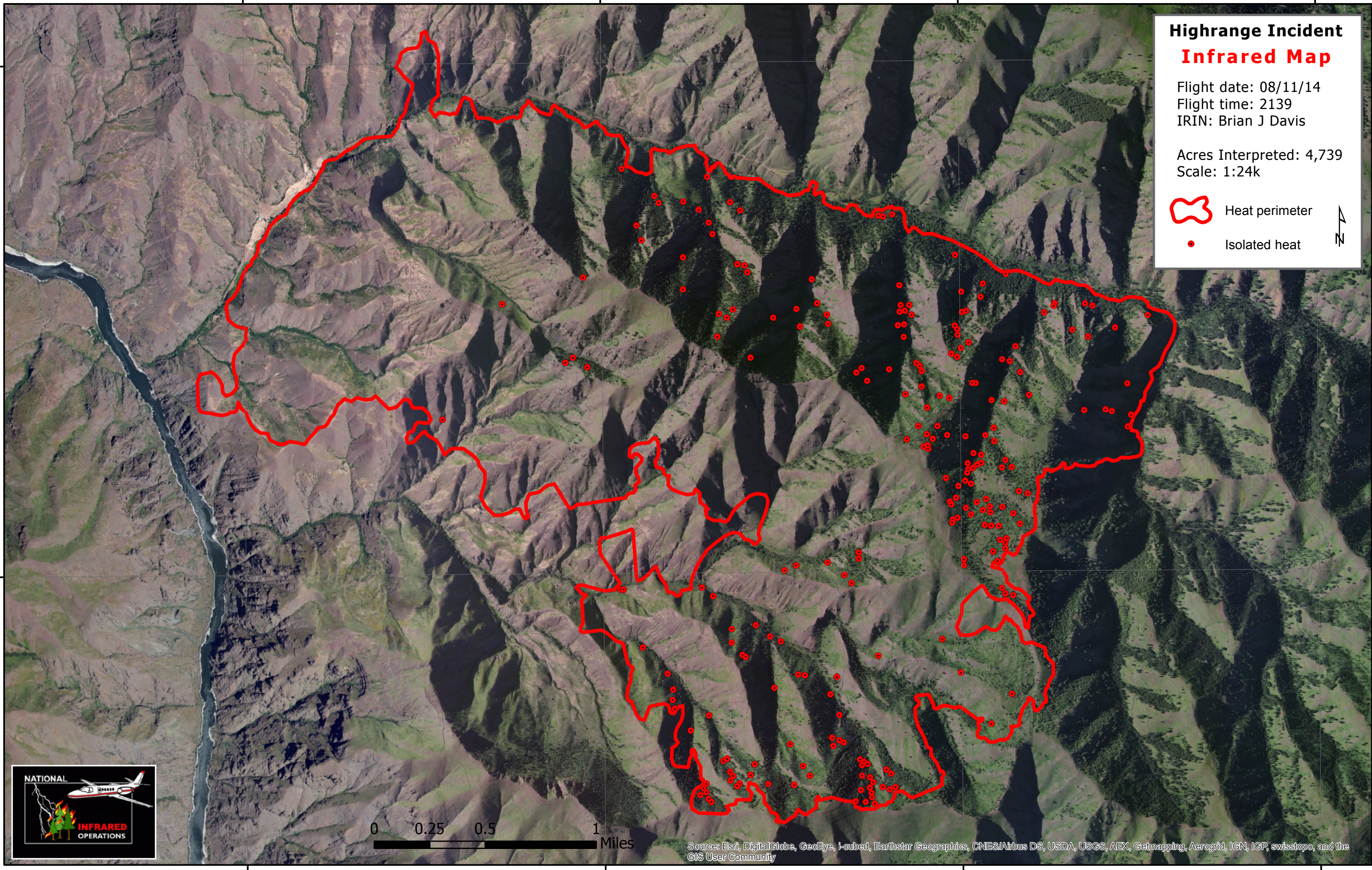
# Highrange Incident Infrared Map

Flight date: 08/11/14  
Flight time: 2139  
IRIN: Brian J Davis

Acres Interpreted: 4,739  
Scale: 1:24k

 Heat perimeter

 Isolated heat



Source: Esri, DigitalGlobe, GeoEye, I-cubed, Earthstar Geographics, CNES/Airbus DS, USDA, USGS, AEX, Getmapping, Aerogrid, IGN, IGP, swisstopo, and the GIS User Community

116°32'0"W

116°30'0"W

116°28'0"W

116°26'0"W