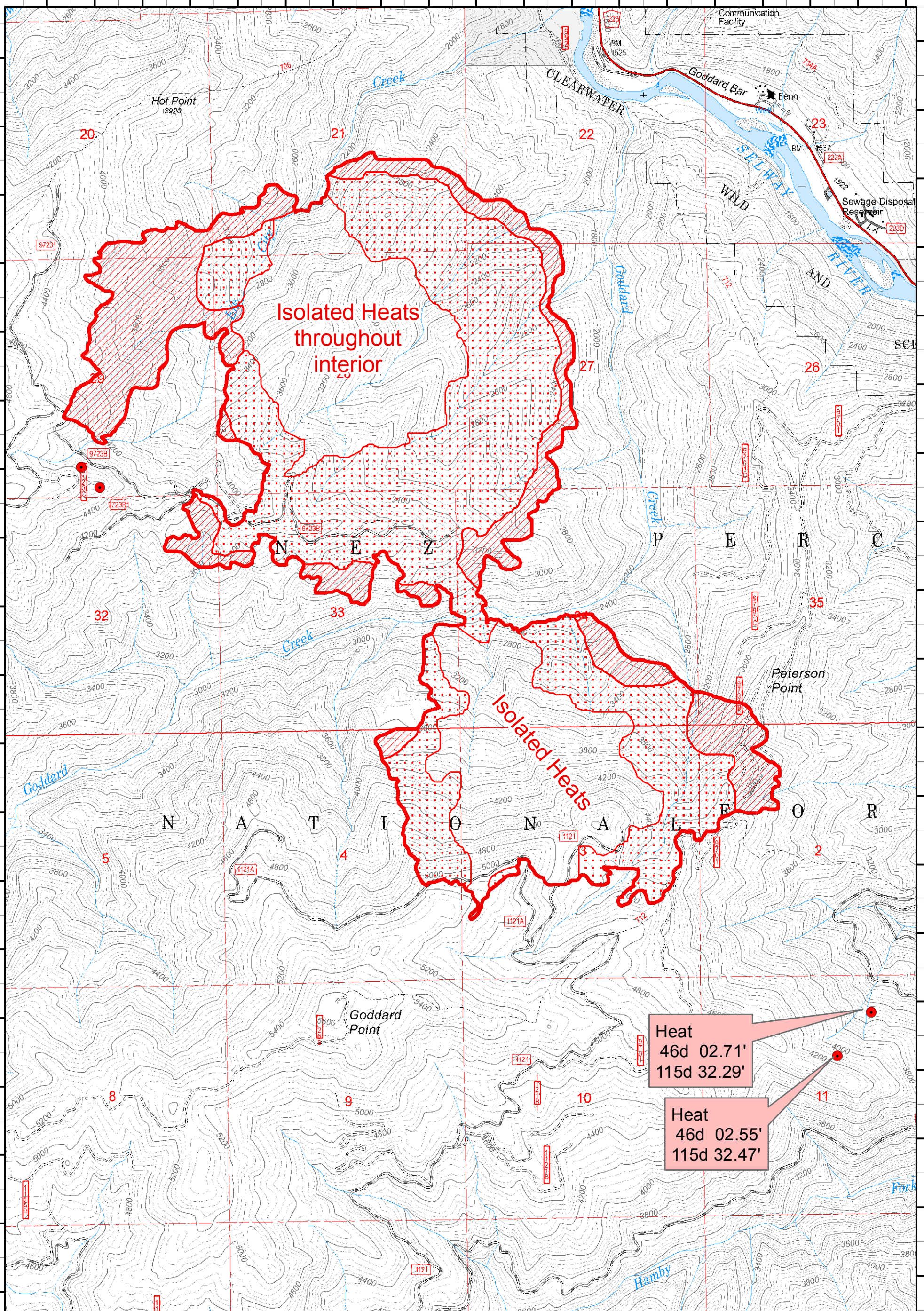


115°36'30"W 115°36'0"W 115°35'30"W 115°35'0"W 115°34'30"W 115°34'0"W 115°33'30"W 115°33'0"W 115°32'30"W 115°32'0"W

46°6'15"N 46°6'0"N 46°5'45"N 46°5'30"N 46°5'15"N 46°5'0"N 46°4'45"N 46°4'30"N 46°4'15"N 46°4'0"N 46°3'45"N 46°3'30"N 46°3'15"N 46°3'0"N 46°2'45"N 46°2'30"N 46°2'15"N 46°2'0"N 46°1'45"N 46°1'30"N 46°1'15"N



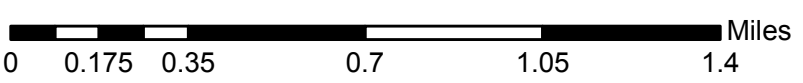
Isolated Heats throughout interior

Isolated Heats

Heat 46d 02.71' 115d 32.29'

Heat 46d 02.55' 115d 32.47'

Johnson Bar ID-NCF-000390
IR Flight: 20140811, 02:49 MDT
IR Acres = 2550



- Isolated Heat
- Scattered Heat
- Intense Heat
- Heat Perimeter



IRIN: Ken Marchand

115°36'45"W 115°36'15"W 115°35'45"W 115°35'15"W 115°34'45"W 115°34'15"W 115°33'45"W 115°33'15"W 115°32'45"W 115°32'15"W