

115°39'W 115°38'W 115°37'W 115°36'W 115°35'W 115°34'W 115°33'W 115°32'W 115°31'W

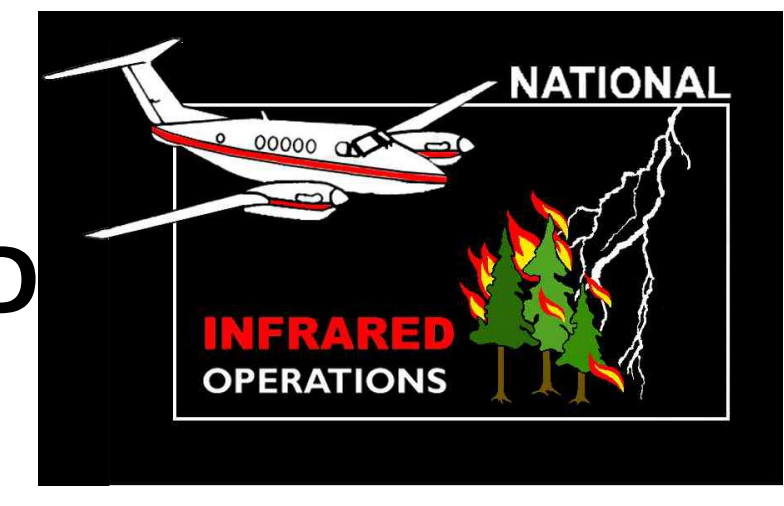
JOHNSON BAR - ID-NCF-000390

August 18, 2014

Aquisition: August 17, 2014 2043 MD

IR Interpreted Acres: 6,936

IRIN: Tammy Hocut



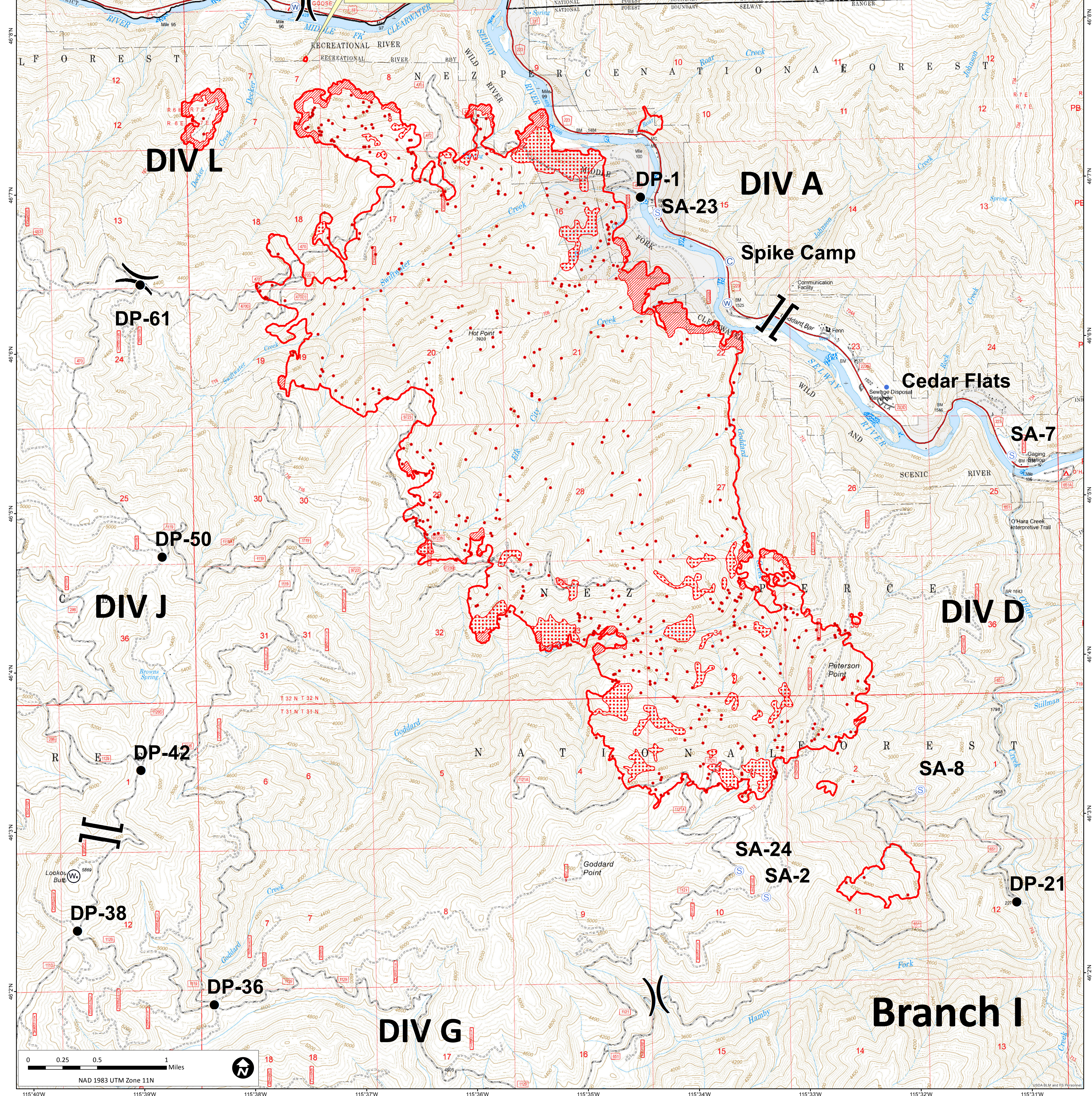
**DIV O**

**Branch II**

New Fire Poly  
-115°37'23.522"W  
46°7'49.411"N

- Isolated Heat Sources
- Heat Perimeter
- Intense Heat Areas
- Scattered Heat Areas
- Branch
- Division
- ICP
- Helibase
- Water Source
- Weather Station
- Drop Point
- Spike Camp
- Staging Area

Map produced:  
8/17/2014 2250 hrs



115°40'W 115°39'W 115°38'W 115°37'W 115°36'W 115°35'W 115°34'W 115°33'W 115°32'W 115°31'W