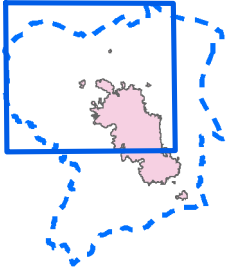


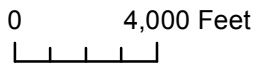
Johnson Bar Fire
 IDNCF390
 Aug 18, 2014
 Day shift
 6,816 acres
 NAD83 UTM Zone 11N

Page 1 of 4
 Divs A, L & O

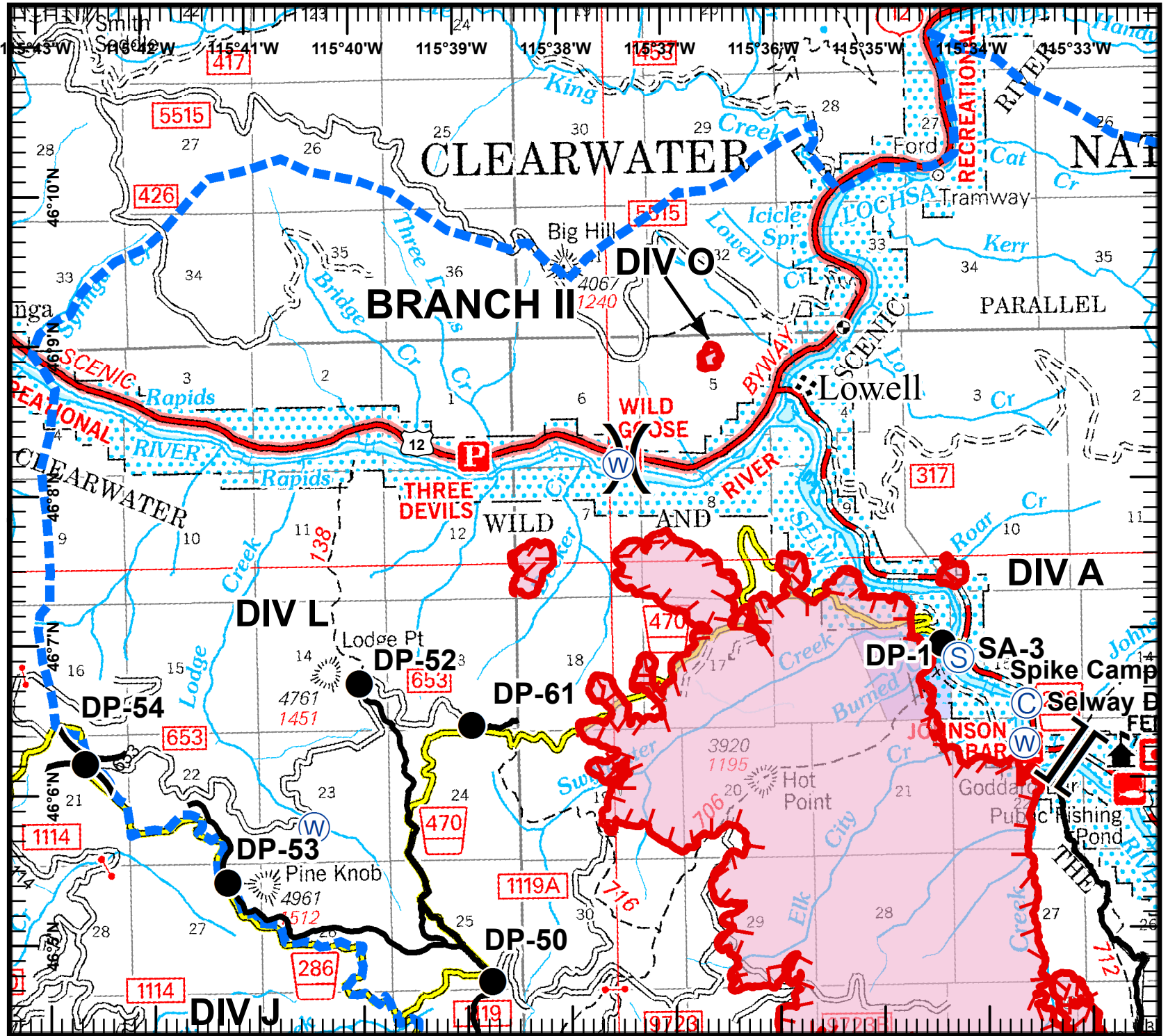


Legend

- () Division
- [] Branch
- ⊙ Spike Camp
- Drop Point
- ⊙ Staging Area
- Helispot
- ⊙ Water Source
- WX Weather Station
- Uncontrolled Fire Edge
- Completed Line
- Suppression Planning Area

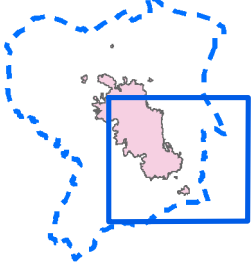


Kevin Nelstead
 August 17, 2014
 1915 Hours



Johnson Bar Fire
 IDNCF390
 Aug 18, 2014
 Day shift
 6,816 acres
 NAD83 UTM Zone 11N

Page 2 of 4
 Division D

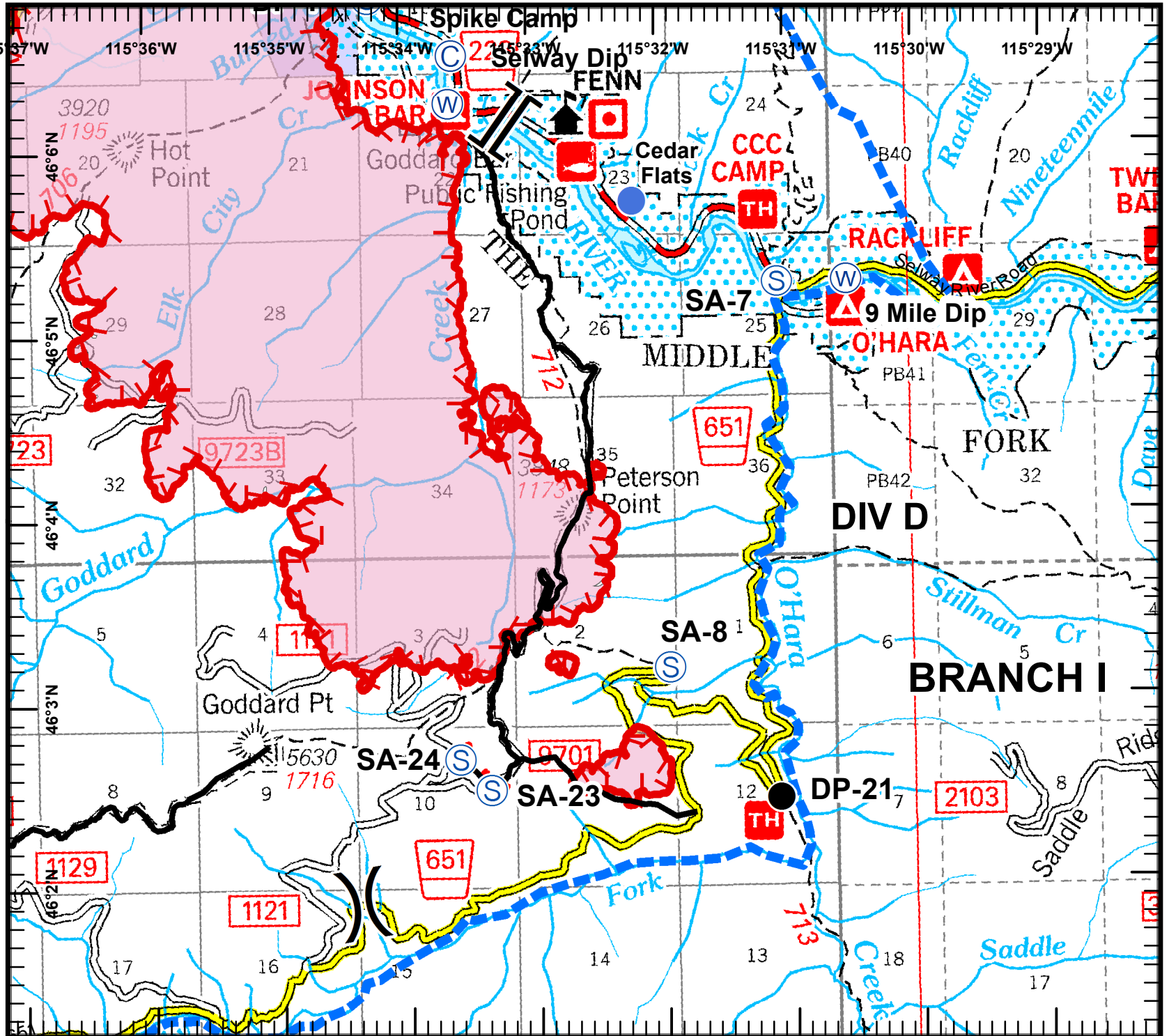


Legend

- () Division
- || Branch
- ⊙ Spike Camp
- Drop Point
- ⊙ Staging Area
- Helispot
- ⊙ Water Source
- WX Weather Station
- Uncontrolled Fire Edge
- Completed Line
- Suppression Planning Area

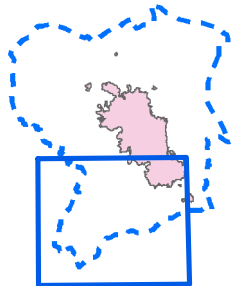
0 4,000 Feet

Kevin Nelstead
 August 17, 2014
 1915 Hours



Johnson Bar Fire
 IDNCF390
 Aug 18, 2014
 Day shift
 6,816 acres
 NAD83 UTM Zone 11N

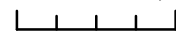
Page 3 of 4
 Division G



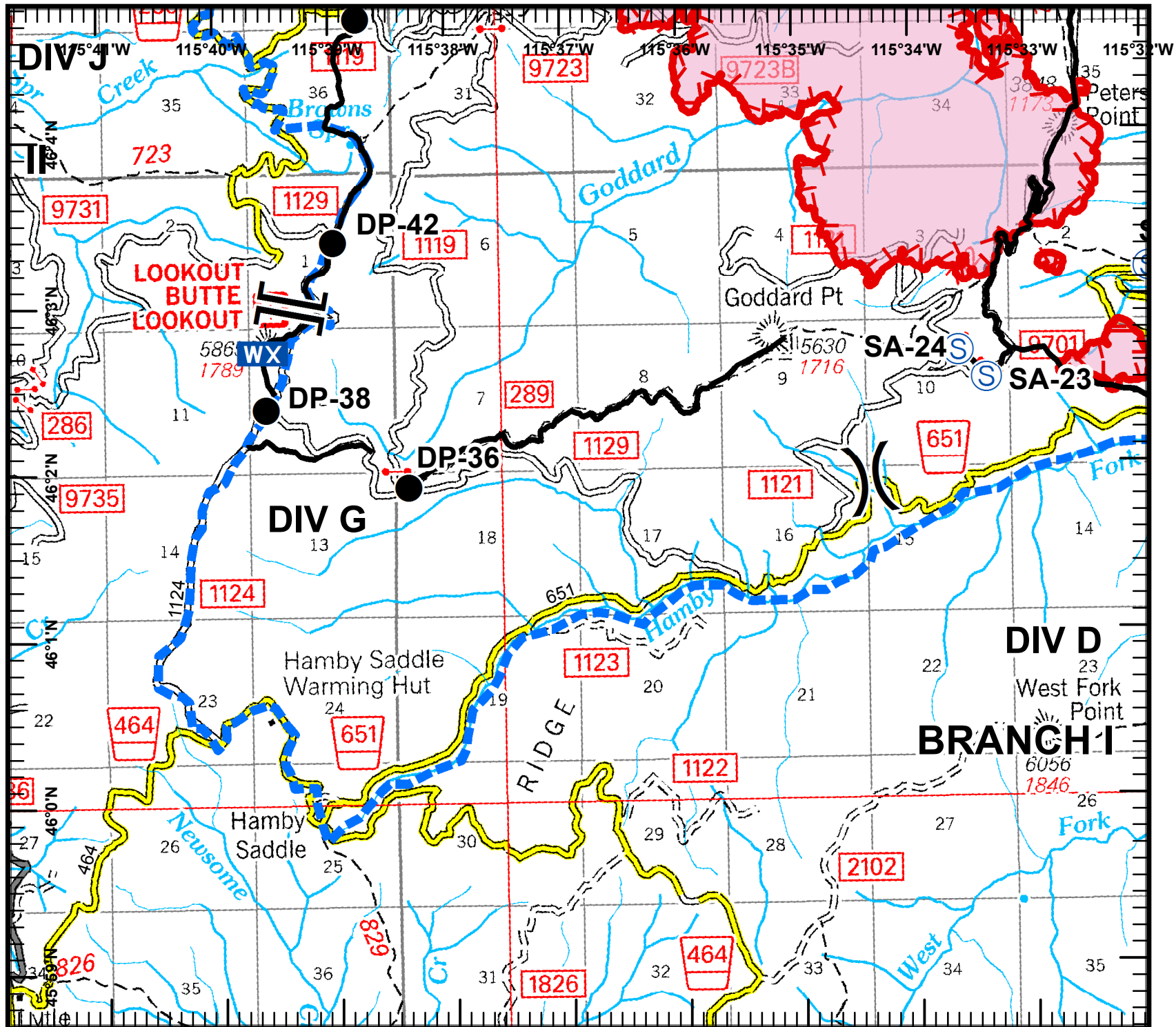
Legend

- () Division
- || Branch
- ⊙ Spike Camp
- Drop Point
- ⊙ Staging Area
- Helispot
- ⊙ Water Source
- WX Weather Station
- Uncontrolled Fire Edge
- Completed Line
- Suppression Planning Area

0 4,000 Feet

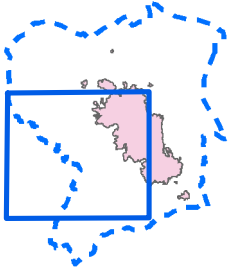


Kevin Nelstead
 August 17, 2014
 1915 Hours



Johnson Bar Fire
 IDNCF390
 Aug 18, 2014
 Day shift
 6,816 acres
 NAD83 UTM Zone 11N

Page 4 of 4
 Division J



Legend

- () Division
- || Branch
- ⊙ Spike Camp
- Drop Point
- ⊙ Staging Area
- Helispot
- ⊙ Water Source
- WX Weather Station
- Uncontrolled Fire Edge
- Completed Line
- Suppression Planning Area

0 4,000 Feet

Kevin Nelstead
 August 17, 2014
 1915 Hours

