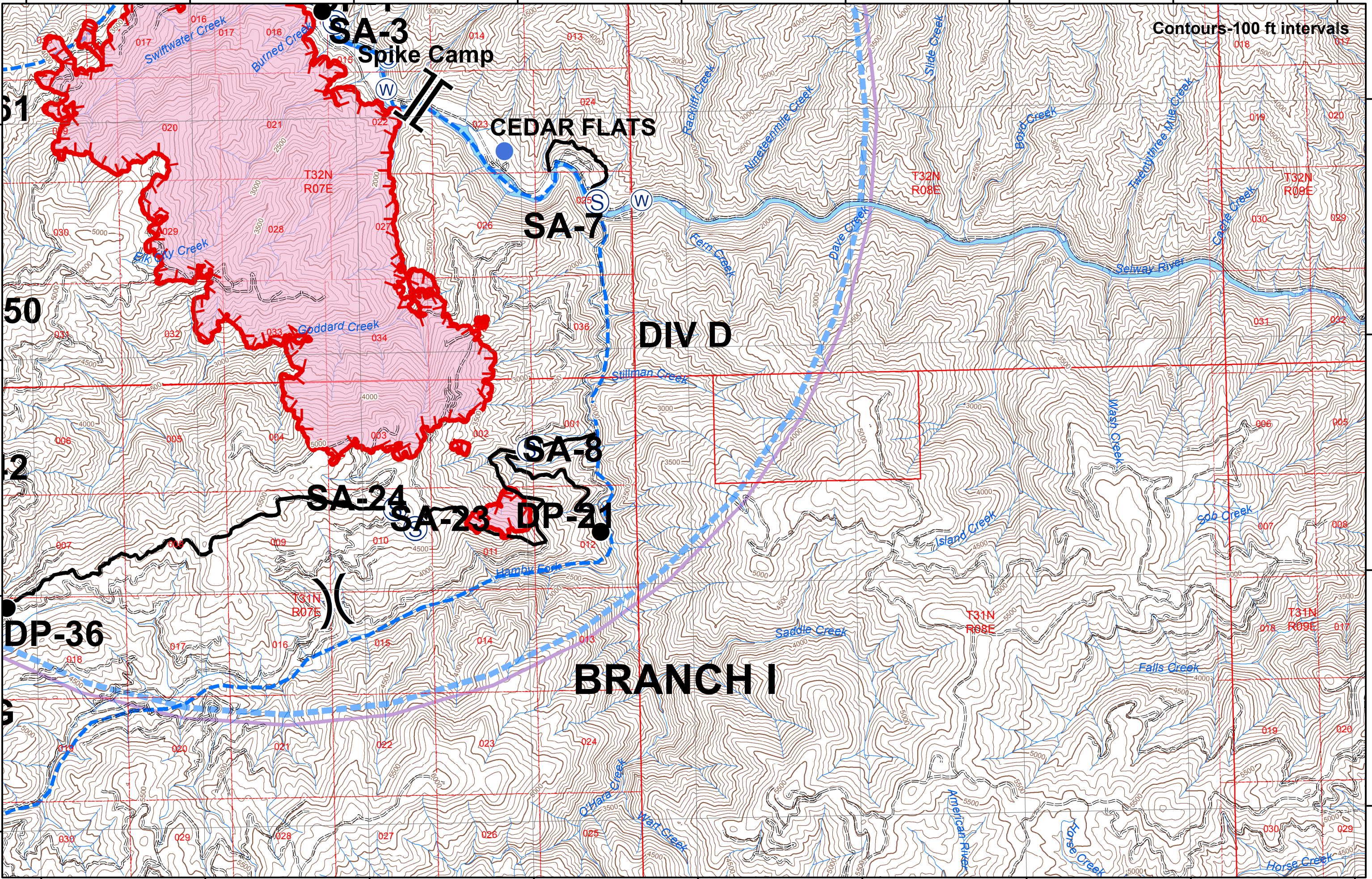


115°38'W 115°36'W 115°34'W 115°32'W 115°30'W 115°28'W 115°26'W 115°24'W 115°22'W



Contours-100 ft intervals

**SA-3**  
Spike Camp

**CEDAR FLATS**

**SA-7**

**DIV D**

**SA-8**

**SA-24**

**SA-23**

**DP-21**

**DP-36**

**BRANCH I**

51

50

2

6

46°6'N

46°4'N

46°2'N

46°0'N

46°6'N

46°4'N

46°2'N

46°0'N

T32N  
R07E

T32N  
R08E

T32N  
R09E

T31N  
R07E

T31N  
R08E

T31N  
R09E

Swiftwater Creek

Burned Creek

Rocky Creek

Goddard Creek

Stillman Creek

Hambly Fork

Saddle Creek

Chyara Creek

Wolf Creek

Rackville Creek

Nineteenmile Creek

Dave Creek

Slirle Creek

Boyd Creek

Franklin Creek

Franklin Mile Creek

Carroll Creek

Selway River

Wash Creek

Soo Creek

Island Creek

Falls Creek

American River

Horse Creek

Horse Creek