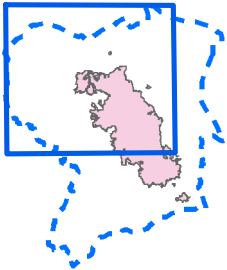


Johnson Bar Fire
 IDNCF390
 Aug 26, 2014
 Until Modified
 8,498 acres
 NAD83 UTM Zone 11N

Page 1 of 4
 Divs A and Z

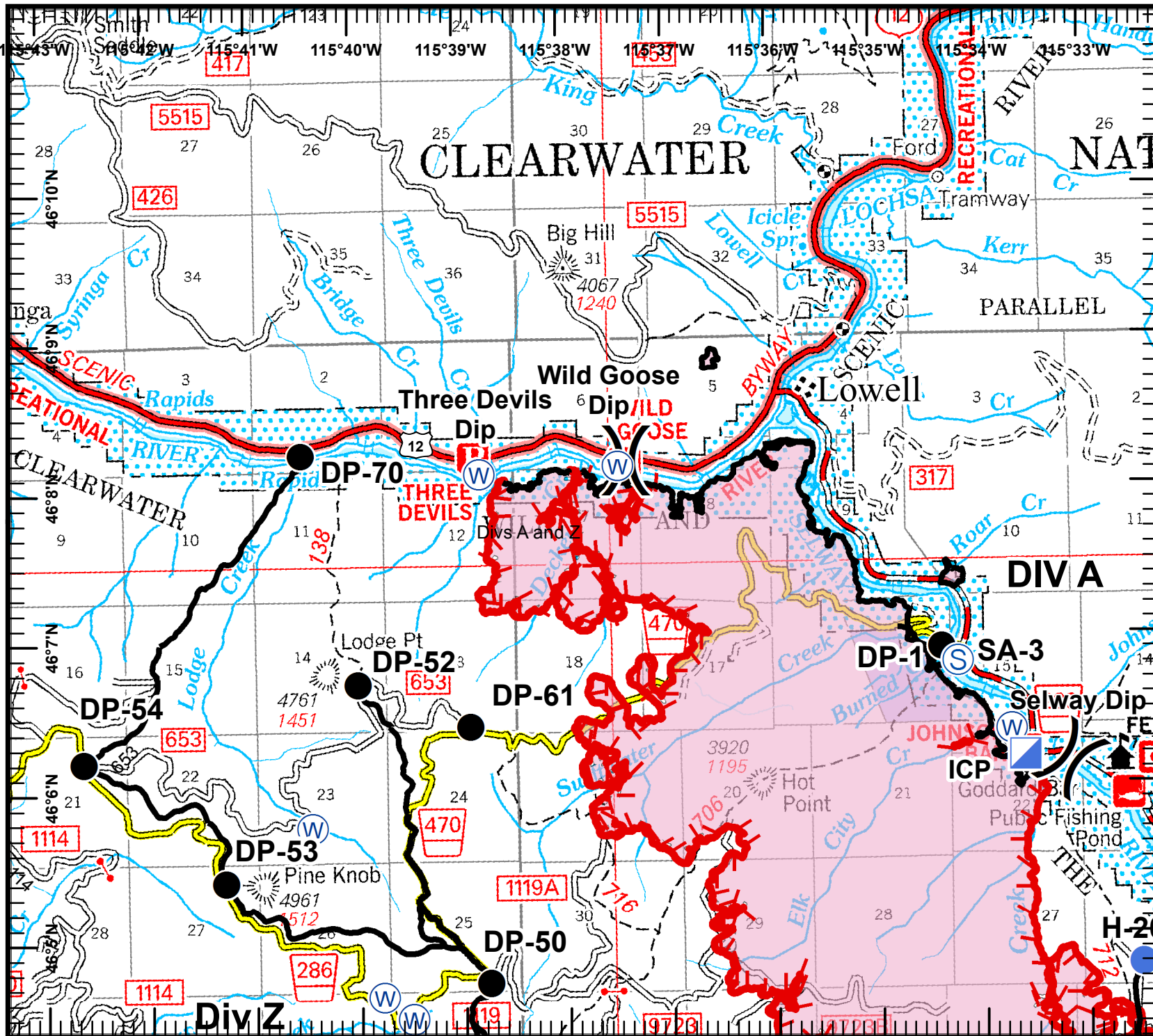


Legend

- () Division
- ⊙ Spike Camp
- Drop Point
- ⊙ Staging Area
- Helispot
- ⊙ Repeater
- ⊙ Water Source
- WX Weather Station
- Uncontrolled Fire Edge
- Completed Line

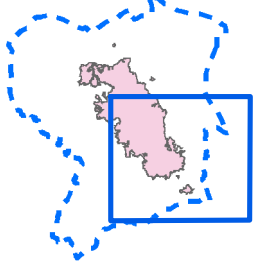
0 4,000 Feet

J. Gray
 August 25, 2014
 2100 Hours



Johnson Bar Fire
IDNCF390
Aug 26, 2014
Until Modified
8,498 acres
NAD83 UTM Zone 11N

Page 2 of 4
 Division D

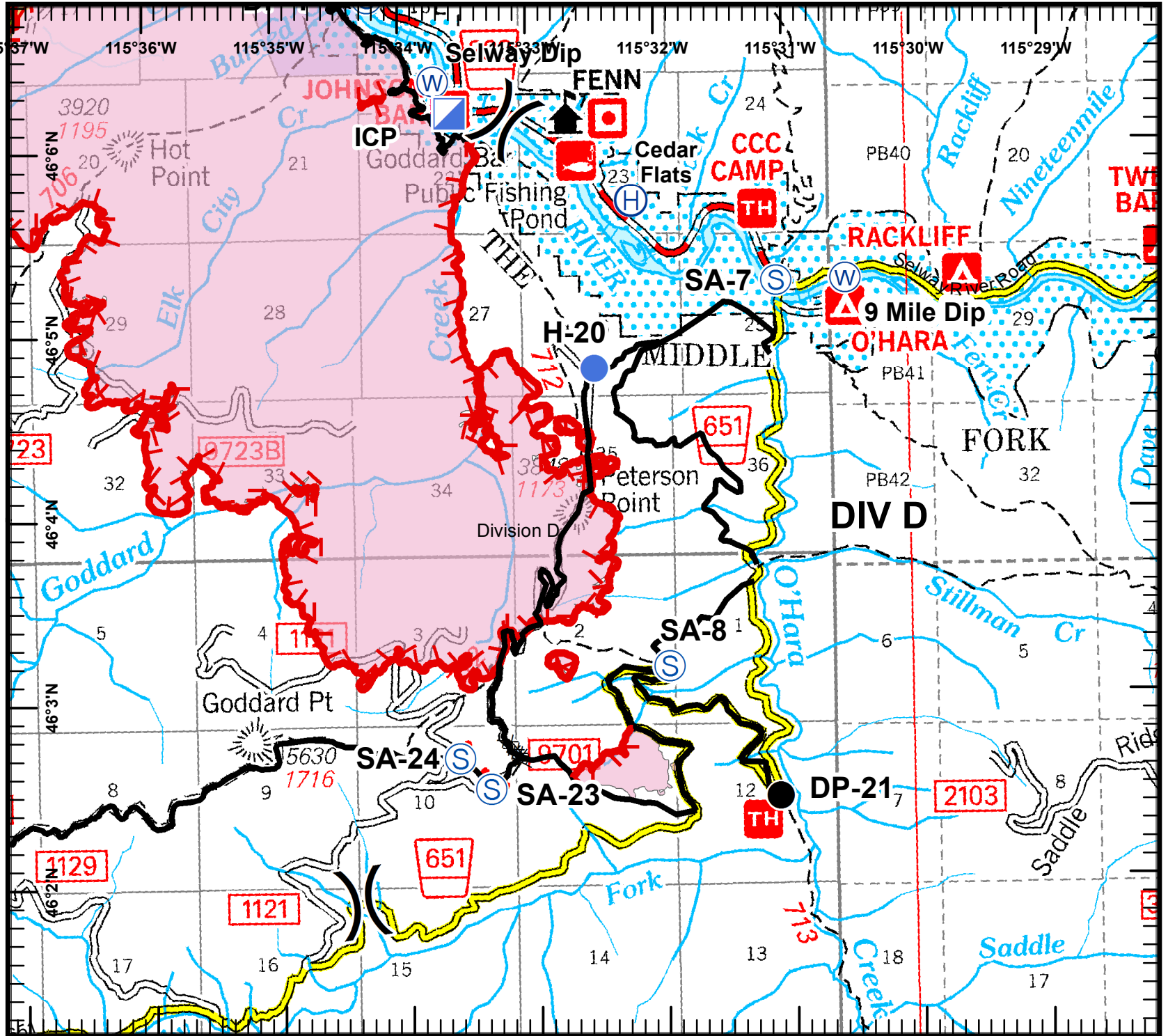


Legend

- () Division
- ⊙ Spike Camp
- Drop Point
- ⊙ Staging Area
- Helispot
- ⊙ Repeater
- ⊙ Water Source
- WX Weather Station
- Uncontrolled Fire Edge
- Completed Line

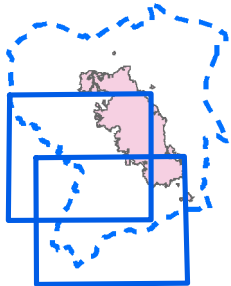
0 4,000 Feet

J. Gray
 August 25, 2014
 2100 Hours



Johnson Bar Fire
 IDNCF390
 Aug 26, 2014
 Until Modified
 8,498 acres
 NAD83 UTM Zone 11N

Page 3 of 4
 Division Z

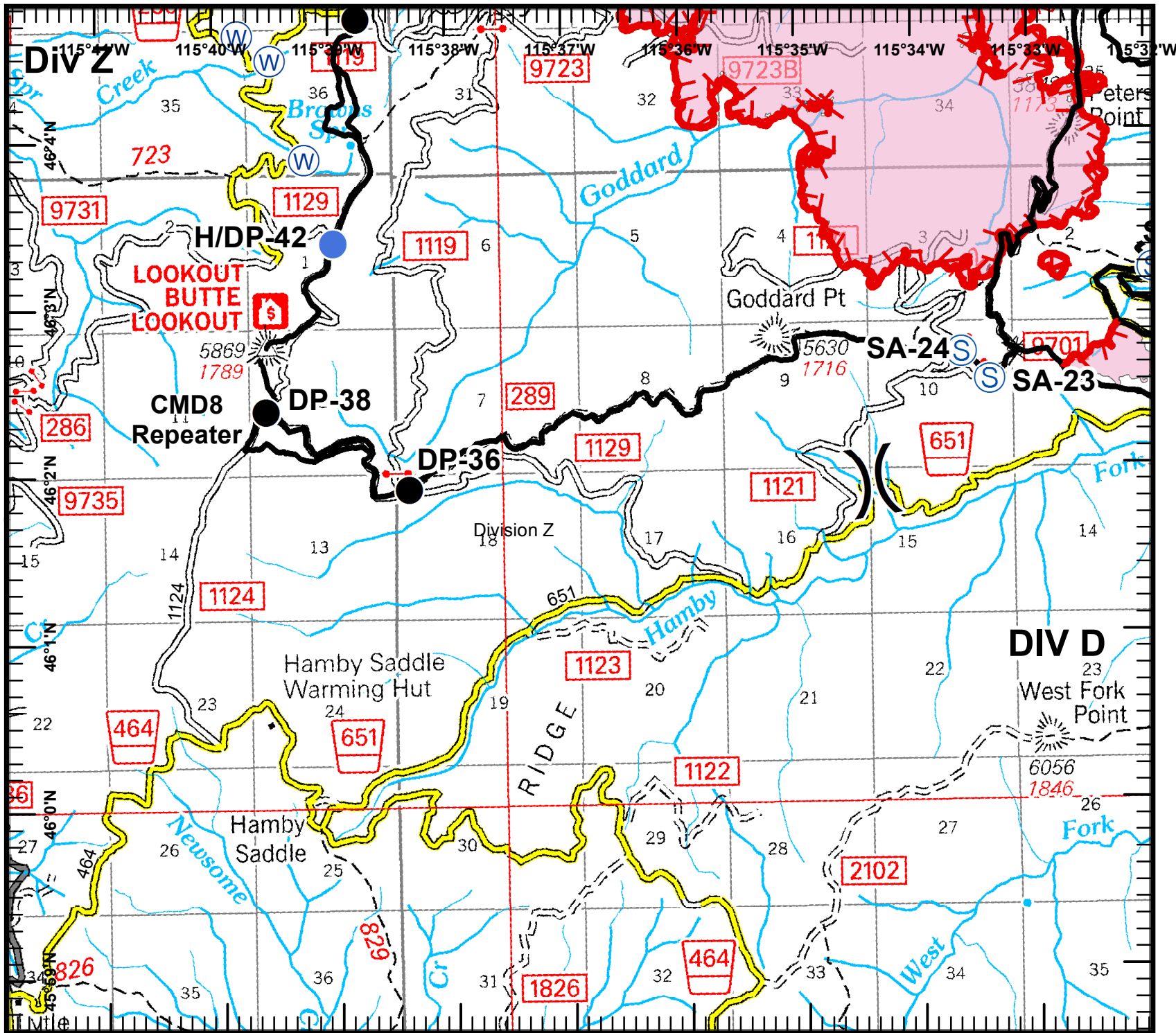


Legend

- () Division
- ⊙ Spike Camp
- Drop Point
- ⊙ Staging Area
- Helispot
- ⊙ Repeater
- ⊙ Water Source
- WX Weather Station
- Uncontrolled Fire Edge
- Completed Line

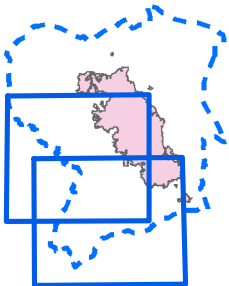
0 4,000 Feet

J. Gray
 August 25, 2014
 2100 Hours



Johnson Bar Fire
 IDNCF390
 Aug 26, 2014
 Until Modified
 8,498 acres
 NAD83 UTM Zone 11N

Page 4 of 4
 Division Z



Legend

- () Division
- ⊙ Spike Camp
- Drop Point
- ⊙ Staging Area
- Helispot
- ⊙ Repeater
- ⊙ Water Source
- WX Weather Station
- Uncontrolled Fire Edge
- Completed Line

0 4,000 Feet

J. Gray
 August 25, 2014
 2100 Hours

