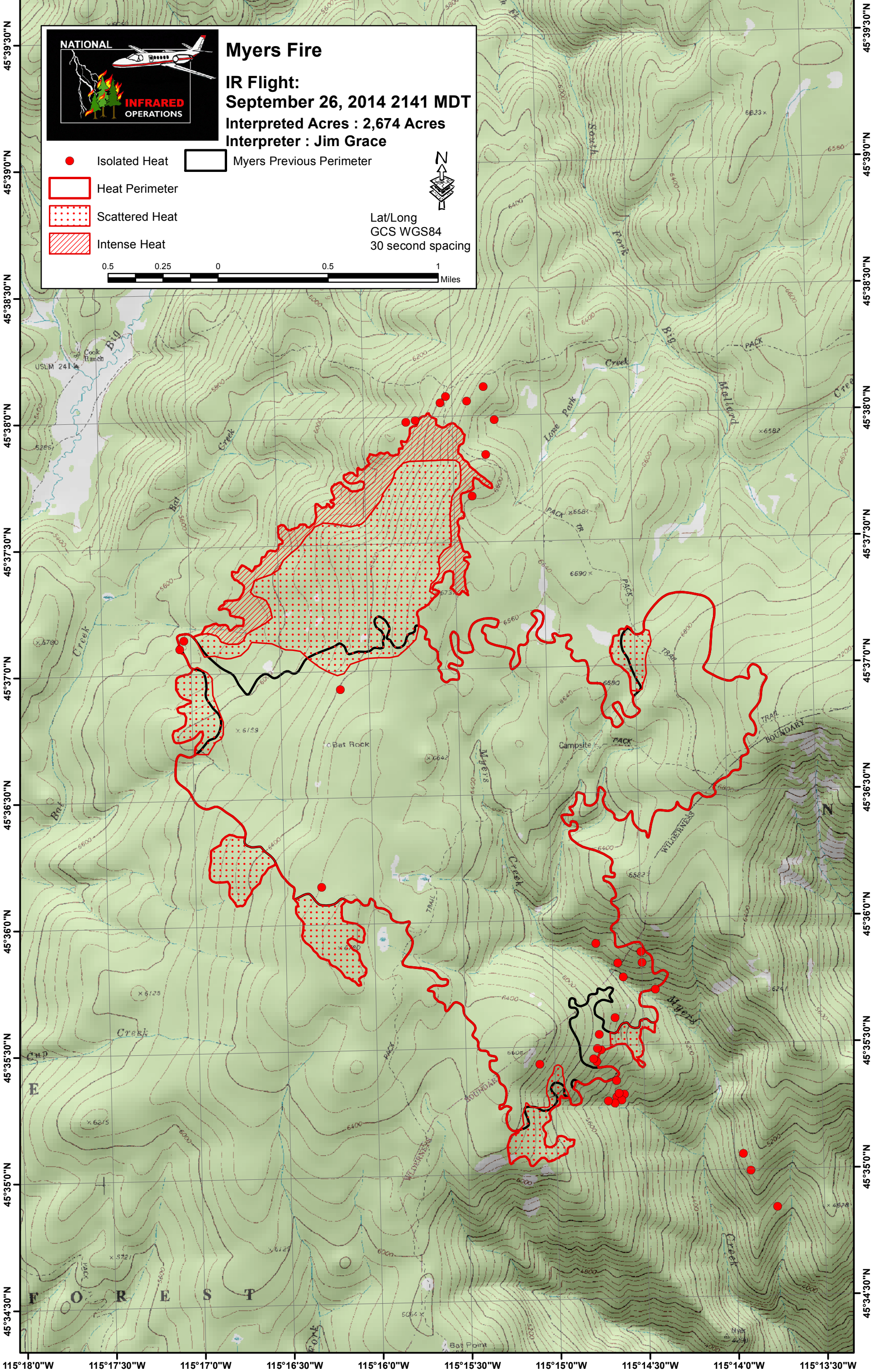


115°17'30"W 115°17'0"W 115°16'30"W 115°16'0"W 115°15'30"W 115°15'0"W 115°14'30"W 115°14'0"W 115°13'30"W



Myers Fire
 IR Flight:
 September 26, 2014 2141 MDT
 Interpreted Acres : 2,674 Acres
 Interpreter : Jim Grace

● Isolated Heat Myers Previous Perimeter
 Heat Perimeter
 Scattered Heat
 Intense Heat

Lat/Long
 GCS WGS84
 30 second spacing

0.5 0.25 0 0.5 1 Miles

115°18'0"W 115°17'30"W 115°17'0"W 115°16'30"W 115°16'0"W 115°15'30"W 115°15'0"W 115°14'30"W 115°14'0"W 115°13'30"W

45°39'30"N
45°39'0"N
45°38'30"N
45°38'0"N
45°37'30"N
45°37'0"N
45°36'30"N
45°36'0"N
45°35'30"N
45°35'0"N
45°34'30"N

45°39'30"N
45°39'0"N
45°38'30"N
45°38'0"N
45°37'30"N
45°37'0"N
45°36'30"N
45°36'0"N
45°35'30"N
45°35'0"N
45°34'30"N