

115°8'30"W 115°8'0"W 115°7'30"W 115°7'0"W 115°6'30"W 115°6'0"W 115°5'30"W 115°5'0"W 115°4'30"W 115°4'0"W 115°3'30"W 115°3'0"W 115°2'30"W 115°2'0"W 115°1'30"W

FID	Lat	Long
0	45° 49.363' N	115° 5.832' W
1	45° 49.343' N	115° 5.867' W
2	45° 49.996' N	115° 3.389' W
3	45° 51.491' N	115° 6.100' W
4	45° 50.527' N	115° 6.522' W

45°51'30"N

45°51'0"N

45°50'30"N

45°50'0"N

45°49'30"N

45°49'0"N

45°48'30"N

45°51'30"N

45°51'0"N

45°50'30"N

45°50'0"N

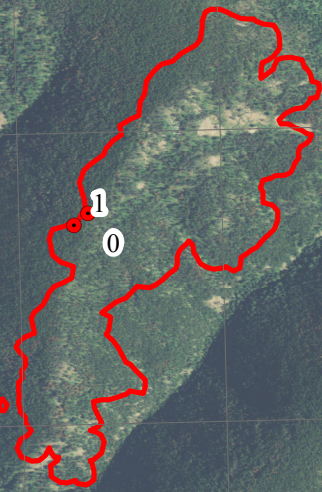
45°49'30"N

45°49'0"N

45°48'30"N

PRONG IR LEGEND

- 20140817_2102_Prong_IsolatedHeatSources
- 🔴 20140817_2102_Prong_HeatPerimeter



PRONG FIRE
ID-NCF-487: IR Map
1:24,000

Infrared Map - 08/18/2014
Imagery Date - 08/17/2014
Imagery Time - 2102
ProngTotal Acres - 147 acres
Change in Heat Perimeter - 0 acres
Since Last IR Perimeter
IRIN - Nate Yorgason

0 0.125 0.25 0.5 Miles

USDA, BLM and FS Personnel

115°8'30"W 115°8'0"W 115°7'30"W 115°7'0"W 115°6'30"W 115°6'0"W 115°5'30"W 115°5'0"W 115°4'30"W 115°4'0"W 115°3'30"W 115°3'0"W 115°2'30"W 115°2'0"W 115°1'30"W