



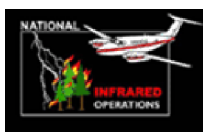
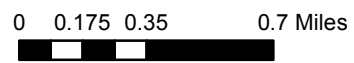


Raven Creek Fire Infrared Heat Sources

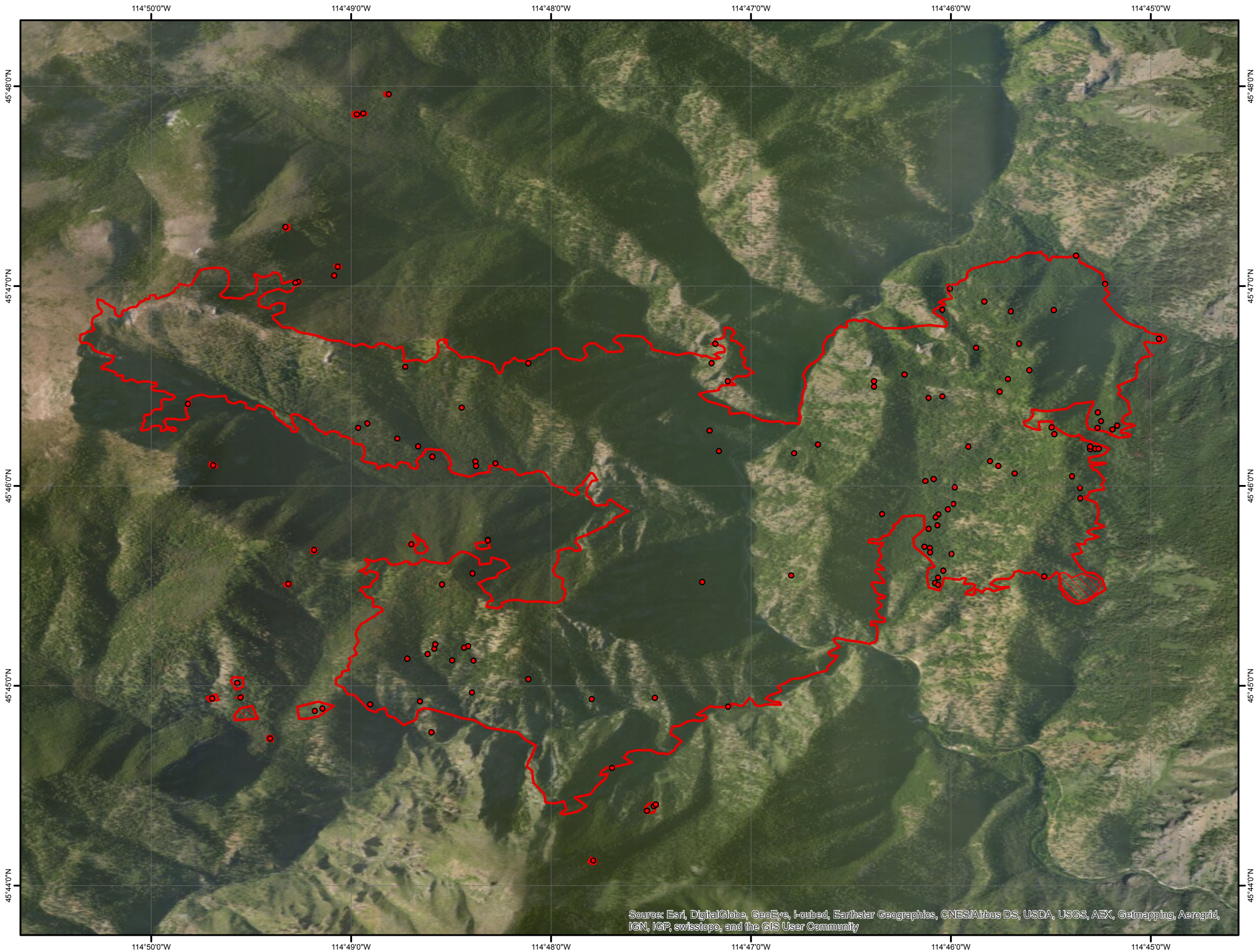
1:33,466

-  Heat Perimeter
-  Intense Heat Areas
-  Scattered Heat Areas
-  Isolated Heat Sources

GCS North American 1983



IR Interpreter: Brian Monroe
IR interpreted acres: 3,853
Date: 10/08/2014
Time received the Image: 2125 hrs



Source: Esri, DigitalGlobe, GeoEye, i-cubed, Earthstar Geographics, CNES/Airbus DS, USDA, USGS, AEX, Getmapping, Aerogrid, IGN, IGP, swisstopo, and the GIS User Community