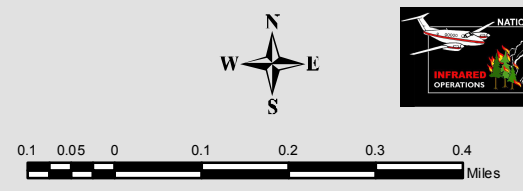


115°14'0"W 115°13'0"W 115°12'0"W 115°11'0"W 115°10'0"W

**THOMPSON RIVER "SPRUCE" COMPLEX FIRE INCIDENT**  
 Incident# - MT-LNF-005093  
 August 13, 2014  
 Aquisition: August 12, 2014 at 2345 MDT  
 IR Interpreted Acres: 1111  
 IRIN: Renee Jacokes-Mancini



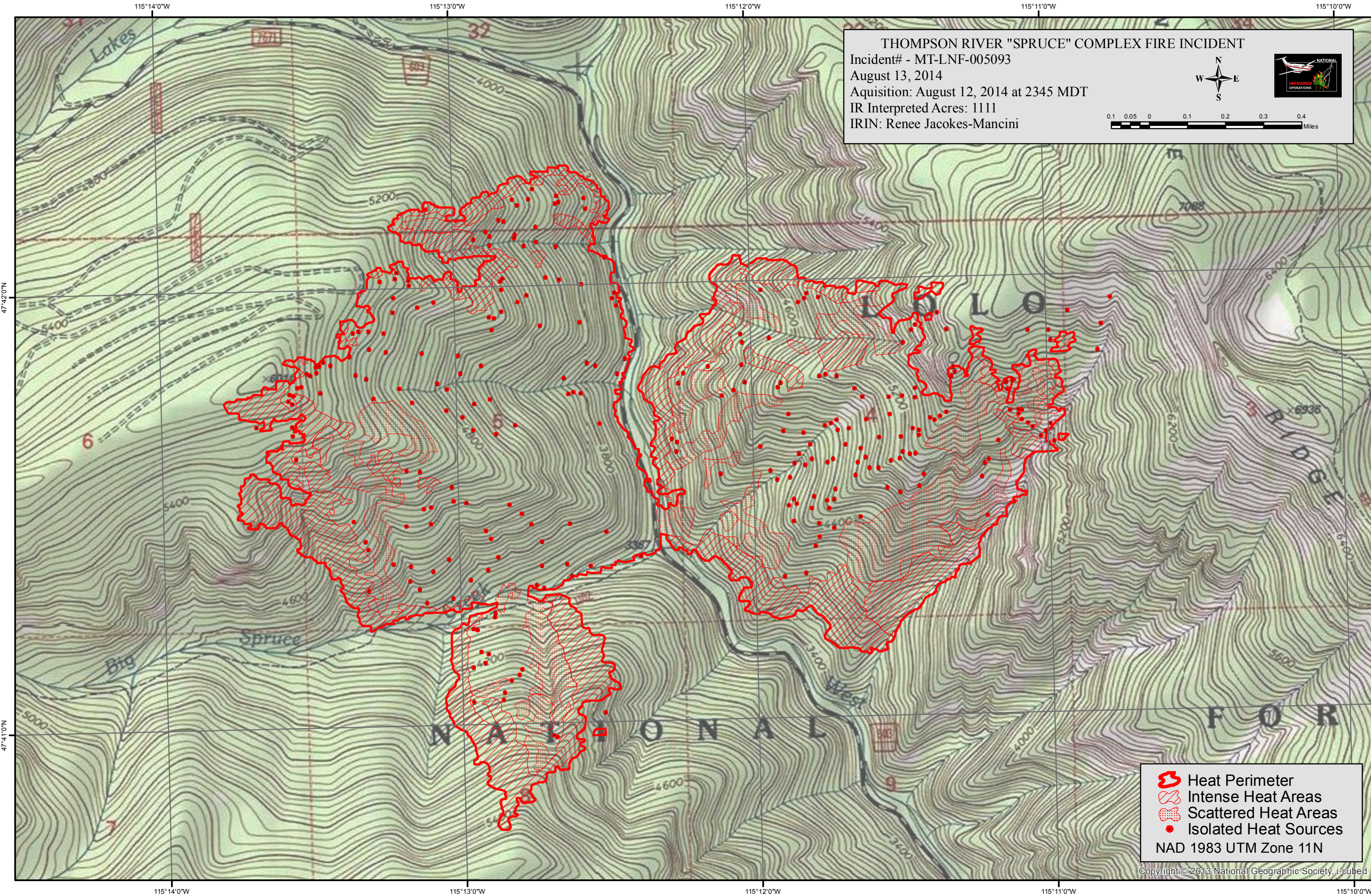
0.1 0.05 0 0.1 0.2 0.3 0.4 Miles

47°42'0"N

47°41'0"N

47°42'0"N

47°41'0"N



-  Heat Perimeter
-  Intense Heat Areas
-  Scattered Heat Areas
-  Isolated Heat Sources

NAD 1983 UTM Zone 11N

115°14'0"W 115°13'0"W 115°12'0"W 115°11'0"W 115°10'0"W