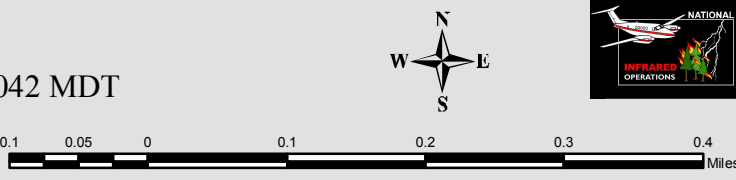


115°11'0"W

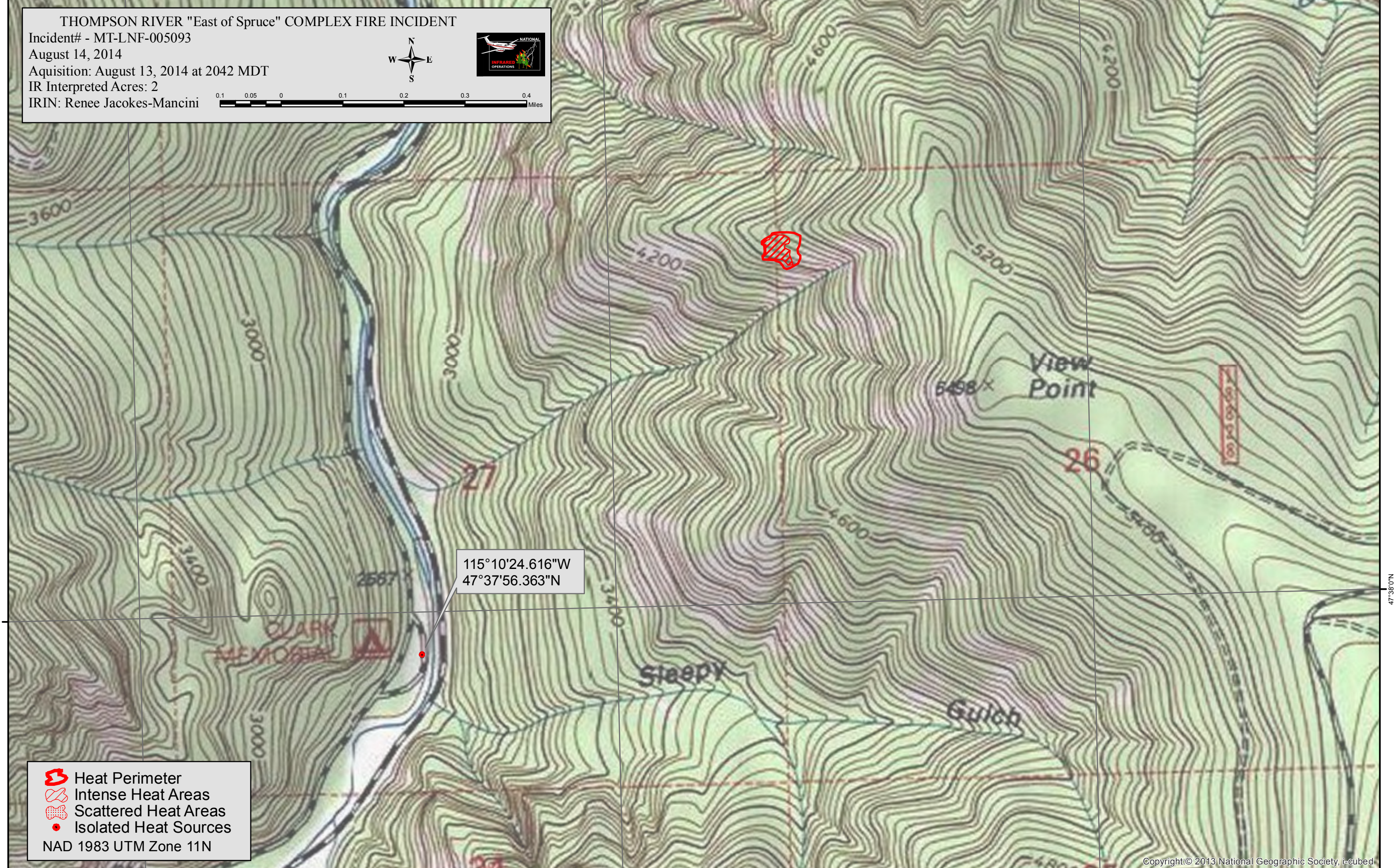
115°10'0"W

115°9'0"W

THOMPSON RIVER "East of Spruce" COMPLEX FIRE INCIDENT
 Incident# - MT-LNF-005093
 August 14, 2014
 Aquisition: August 13, 2014 at 2042 MDT
 IR Interpreted Acres: 2
 IRIN: Renee Jacokes-Mancini





0.1 0.05 0 0.1 0.2 0.3 0.4 Miles



47°38'0"N

47°38'0"N

-  Heat Perimeter
 -  Intense Heat Areas
 -  Scattered Heat Areas
 -  Isolated Heat Sources
- NAD 1983 UTM Zone 11N

115°11'0"W

115°10'0"W

115°9'0"W