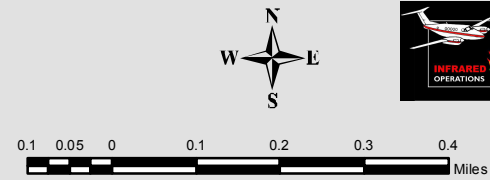



115°14'0"W 115°13'0"W 115°12'0"W 115°11'0"W 115°10'0"W

THOMPSON RIVER "SPRUCE" COMPLEX FIRE INCIDENT
 Incident# - MT-LNF-005093
 August 15, 2014
 Aquisition: August 15, 2014 at 0344 MDT
 IR Interpreted Acres: 1170
 IRIN: Renee Jacokes-Mancini



0.1 0.05 0 0.1 0.2 0.3 0.4 Miles



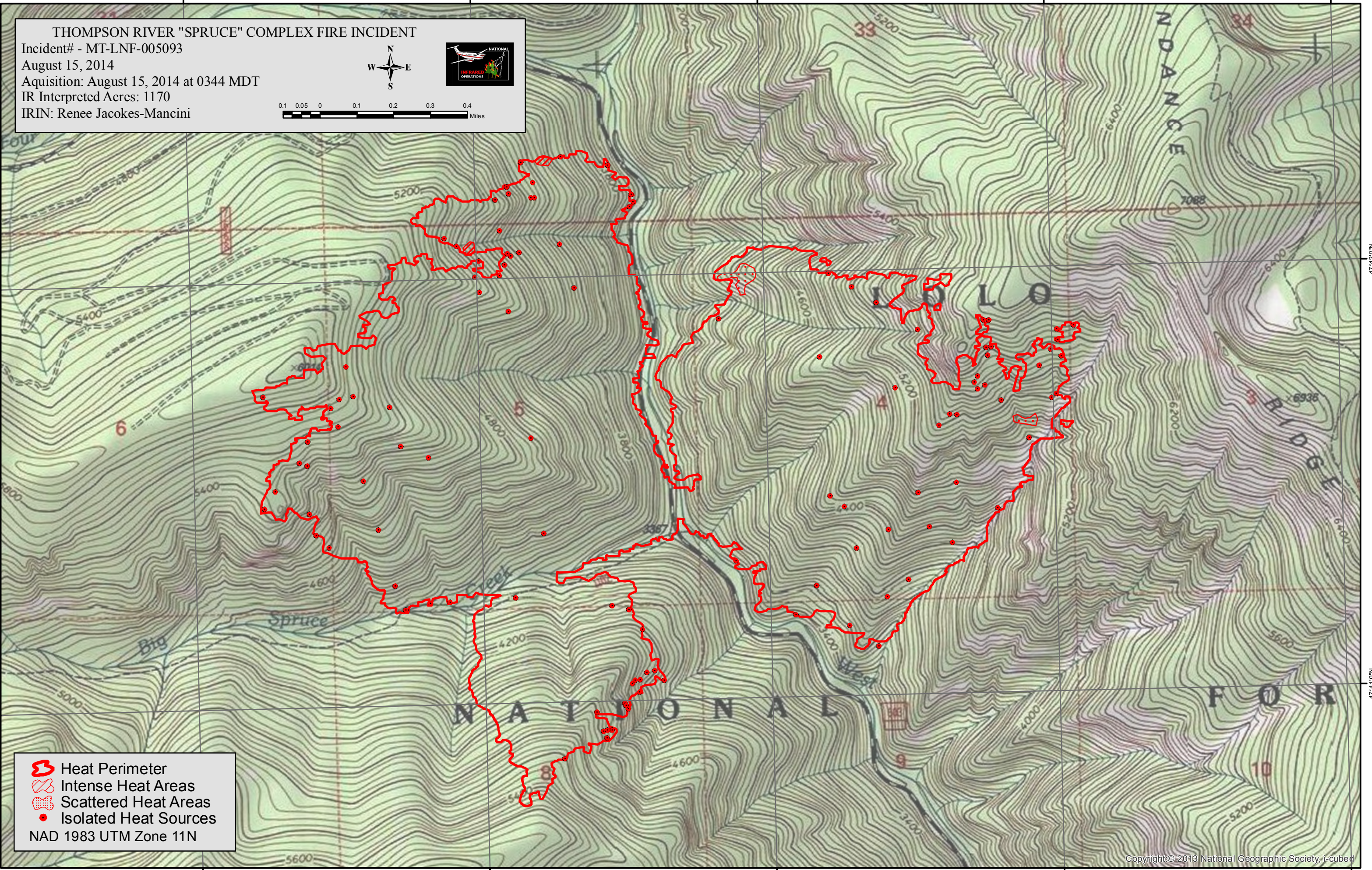
47°42'0"N





47°42'0"N

47°41'0"N

47°41'0"N

115°14'0"W 115°13'0"W 115°12'0"W 115°11'0"W 115°10'0"W



-  Heat Perimeter
-  Intense Heat Areas
-  Scattered Heat Areas
-  Isolated Heat Sources

NAD 1983 UTM Zone 11N