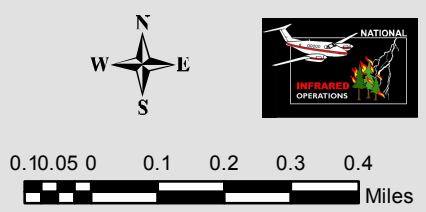


115°16'0"W 115°15'0"W 115°14'0"W 115°13'0"W 115°12'0"W 115°11'0"W

THOMPSON RIVER "North of Spruce" COMPLEX FIRE INCIDENT
 Incident# - MT-LNF-005093
 August 17, 2014
 Aquisition: August 17, 2014 at 0329 MDT
 IR Interpreted Acres: 8
 Total Complex Acres: 1,650
 IRIN: Renee Jacokes-Mancini



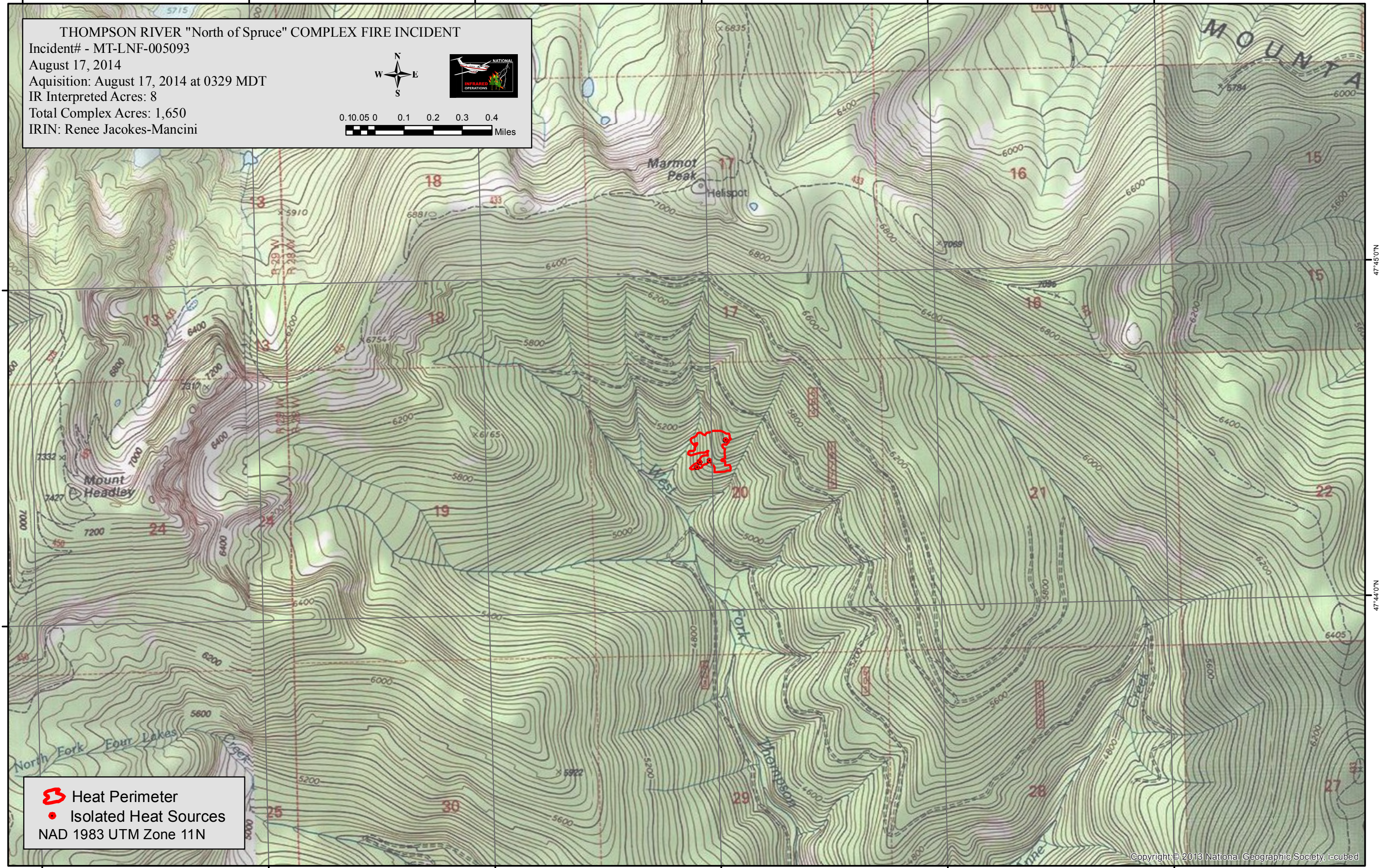
0.10.05 0 0.1 0.2 0.3 0.4 Miles



47°45'0"N

47°44'0"N

47°45'0"N

47°44'0"N



 Heat Perimeter
 Isolated Heat Sources
 NAD 1983 UTM Zone 11N

115°16'0"W 115°15'0"W 115°14'0"W 115°13'0"W 115°12'0"W 115°11'0"W