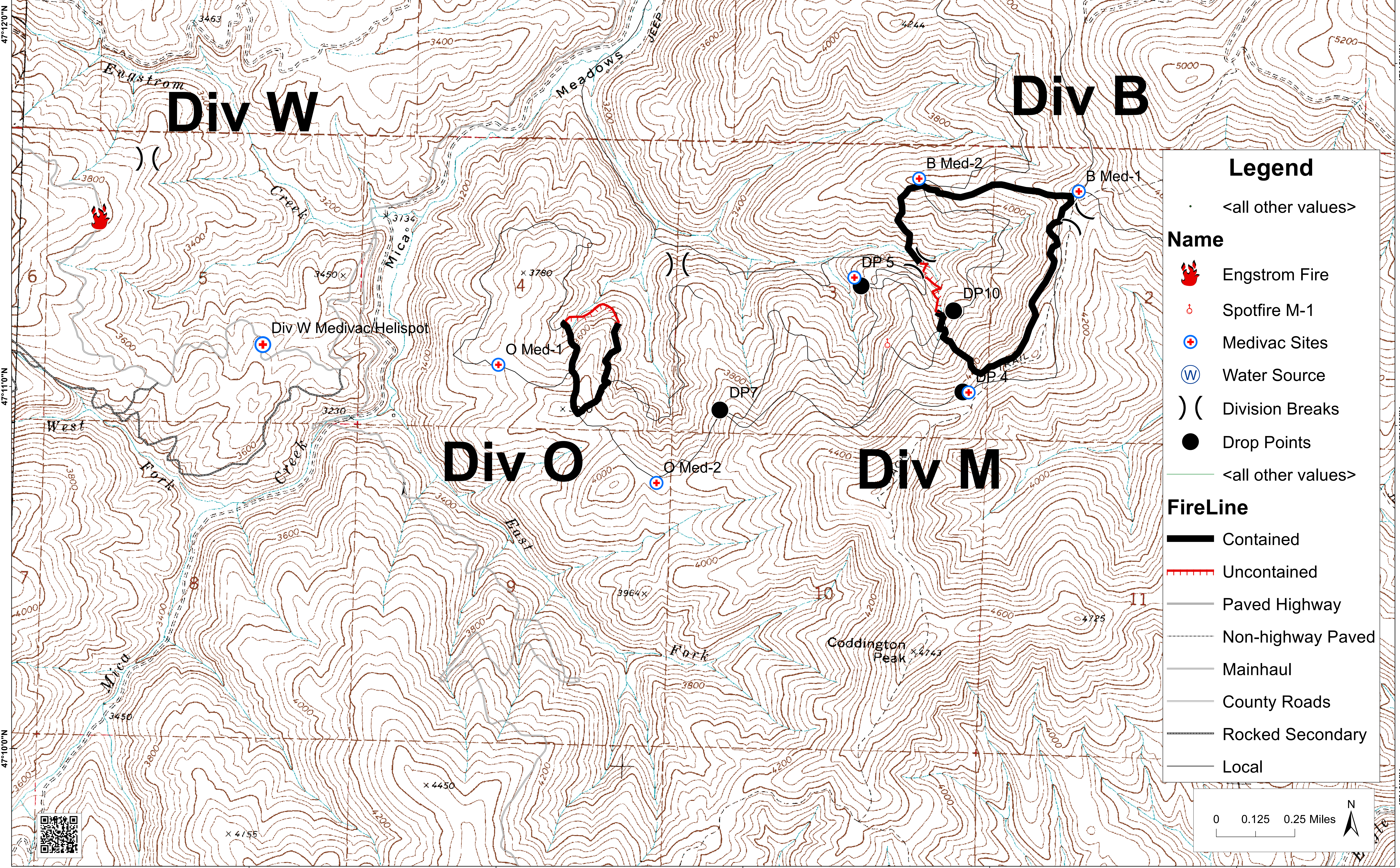


116°15'0"W 116°14'0"W 116°13'0"W 116°12'0"W 116°11'0"W 116°10'0"W

Upper Mica Complex
Coddington 1 & 2
ID-SJS-032016
08-09-2014 1700 Planning

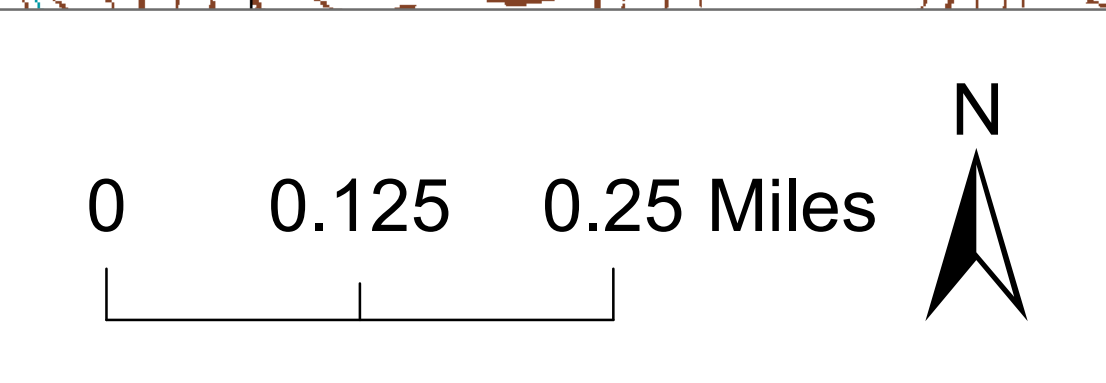


Legend

- Engstrom Fire
- Spotfire M-1
- Medivac Sites
- Water Source
- Division Breaks
- Drop Points
- <all other values>

FireLine

- Contained
- Uncontained
- Paved Highway
- Non-highway Paved
- Mainhaul
- County Roads
- Rocked Secondary
- Local



116°15'0"W 116°14'0"W 116°13'0"W 116°12'0"W 116°11'0"W 116°10'0"W