

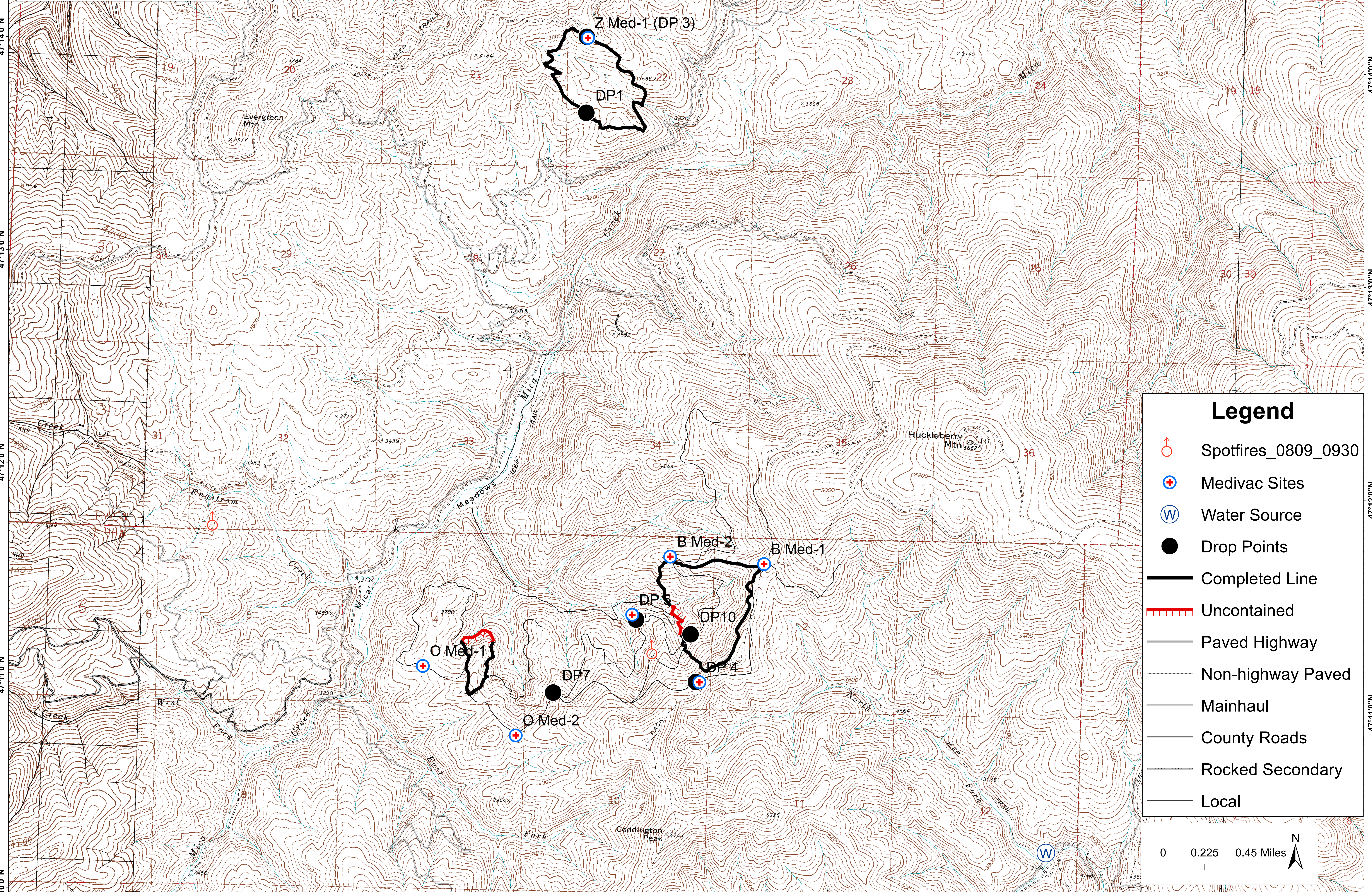
116°16'0"W 116°15'0"W 116°14'0"W 116°13'0"W 116°12'0"W 116°11'0"W 116°10'0"W 116°9'0"W 116°8'0"W 116°7'0"W

Fire	Acres
Midnight Mica	108.8
Coddington Two	22.5
Coddington One	131.4
<b>Total</b>	<b>262.6</b>

# Upper Mica Complex

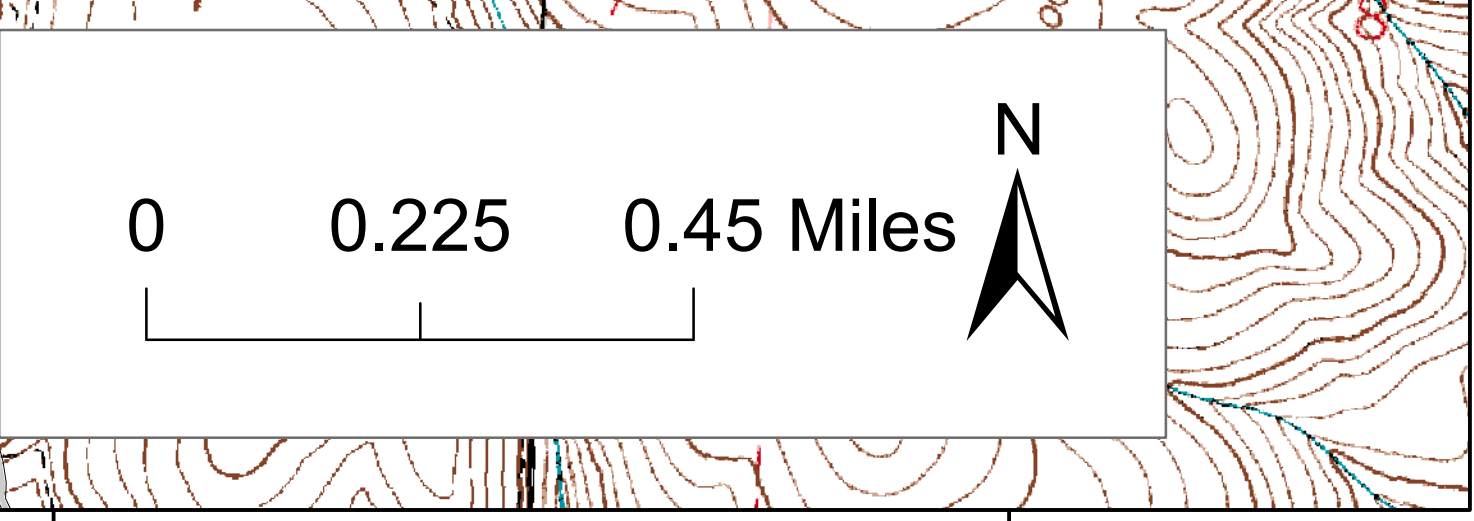
## ID-SJS-032016

### 08-09-2014 Briefing



### Legend

- Spotfires\_0809\_0930
- Medivac Sites
- Water Source
- Drop Points
- Completed Line
- Uncontained
- Paved Highway
- Non-highway Paved
- Mainhaul
- County Roads
- Rocky Secondary
- Local



116°15'0"W 116°14'0"W 116°13'0"W 116°12'0"W 116°11'0"W 116°10'0"W 116°9'0"W 116°8'0"W 116°7'0"W