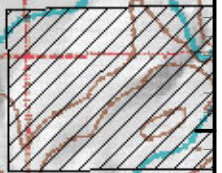
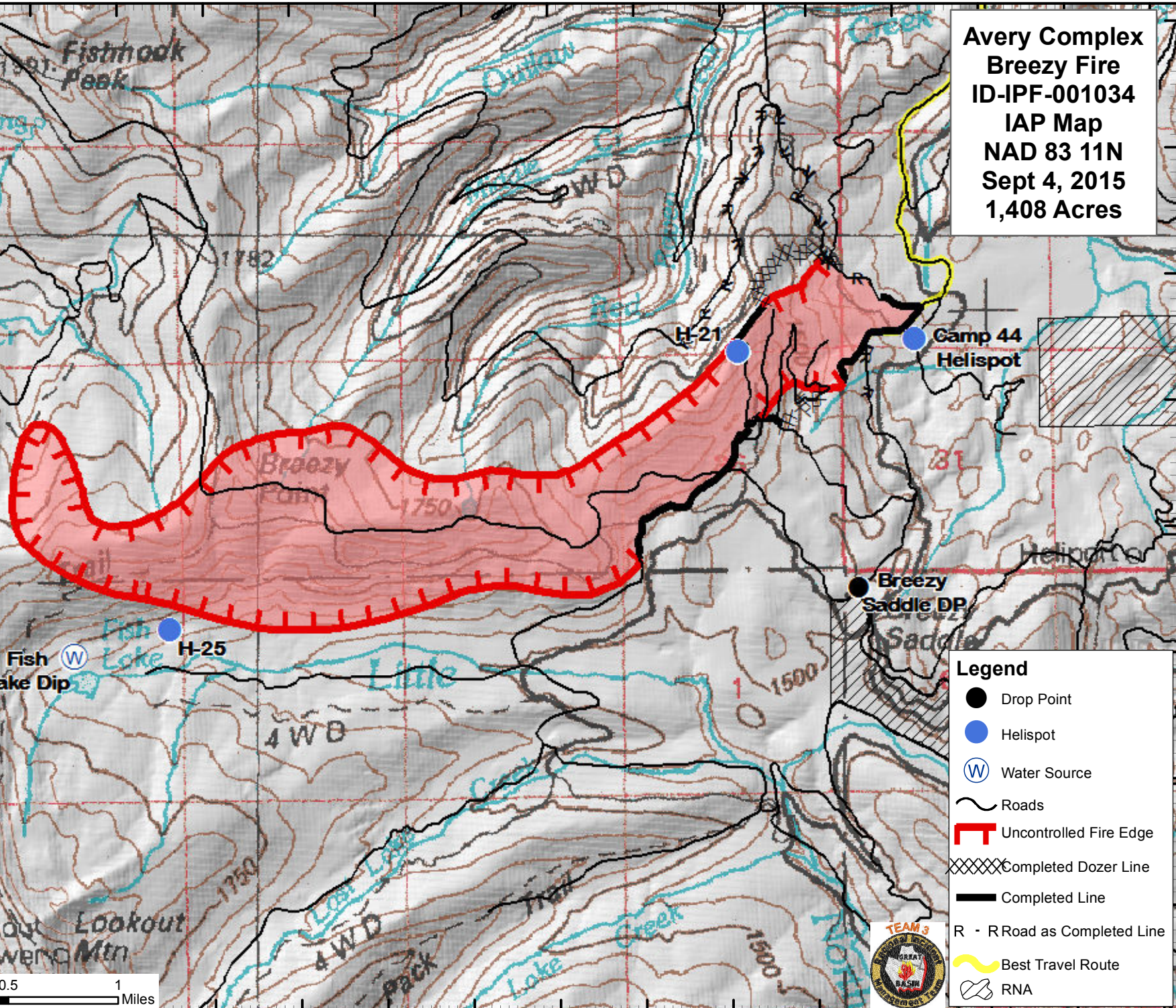


115°58'30"W 115°58'0"W 115°57'30"W 115°57'0"W 115°56'30"W 115°56'0"W 115°55'30"W 115°55'0"W 115°54'30"W 115°54'0"W 115°53'30"W 115°53'0"W 115°52'30"W 115°52'0"W 115°51'30"W

47°50'N 47°53'N 47°56'N 47°59'N 47°62'N 47°65'N 47°68'N 47°71'N 47°74'N 47°77'N 47°80'N 47°83'N



**Avery Complex
Breezy Fire
ID-IPF-001034
IAP Map
NAD 83 11N
Sept 4, 2015
1,408 Acres**



- Legend**
- Drop Point
 - Helispot
 - Ⓜ Water Source
 - ~ Roads
 - ▬ Uncontrolled Fire Edge
 - ▨ Completed Dozer Line
 - ▬ Completed Line
 - R - R Road as Completed Line
 - 👉 Best Travel Route
 - Ⓜ RNA

R.Dunn
9/3/2015
8:13:43 PM

0 0.5 1 Miles



115°58'30"W 115°58'0"W 115°57'30"W 115°57'0"W 115°56'30"W 115°56'0"W 115°55'30"W 115°55'0"W 115°54'30"W 115°54'0"W 115°53'30"W 115°53'0"W 115°52'30"W 115°52'0"W 115°51'30"W