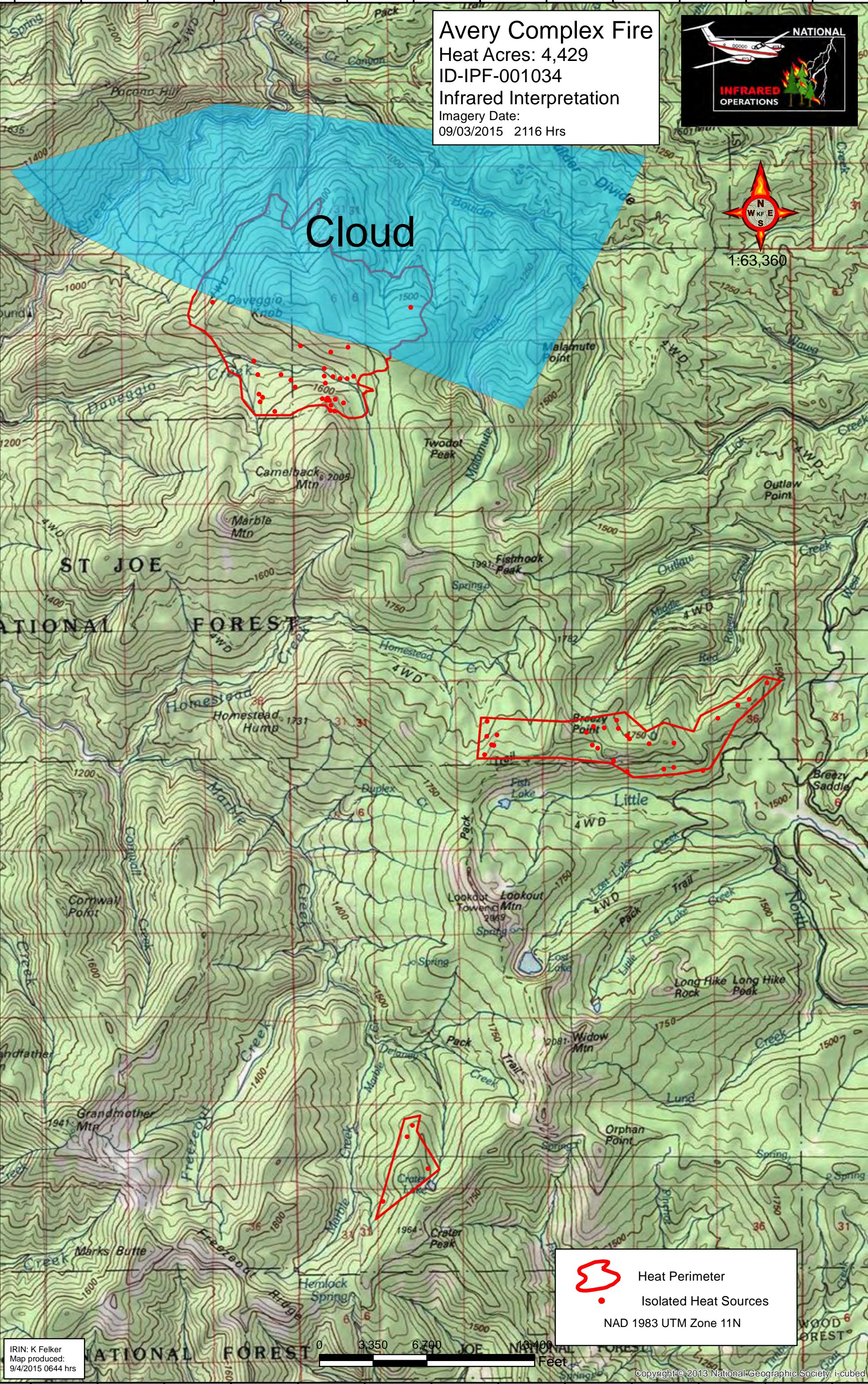


116°5'W 116°4'W 116°3'W 116°2'W 116°1'W 116°0'W 115°59'W 115°58'W 115°57'W 115°56'W 115°55'W 115°54'W 115°53'W





Avery Complex Fire
Heat Acres: 4,429
ID-IPF-001034
Infrared Interpretation
Imagery Date:
09/03/2015 2116 Hrs

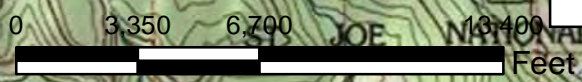


1:63,360

Cloud

 Heat Perimeter
 Isolated Heat Sources
NAD 1983 UTM Zone 11N

IRIN: K Felker
Map produced:
9/4/2015 0644 hrs



Copyright © 2013 National Geographic Society, i-cubed

116°5'W 116°4'W 116°3'W 116°2'W 116°1'W 116°0'W 115°59'W 115°58'W 115°57'W 115°56'W 115°55'W 115°54'W 115°53'W