

114°55'0"W

114°54'0"W

114°53'0"W

46°13'0"N

46°13'0"N

46°12'0"N

46°12'0"N





114°55'0"W

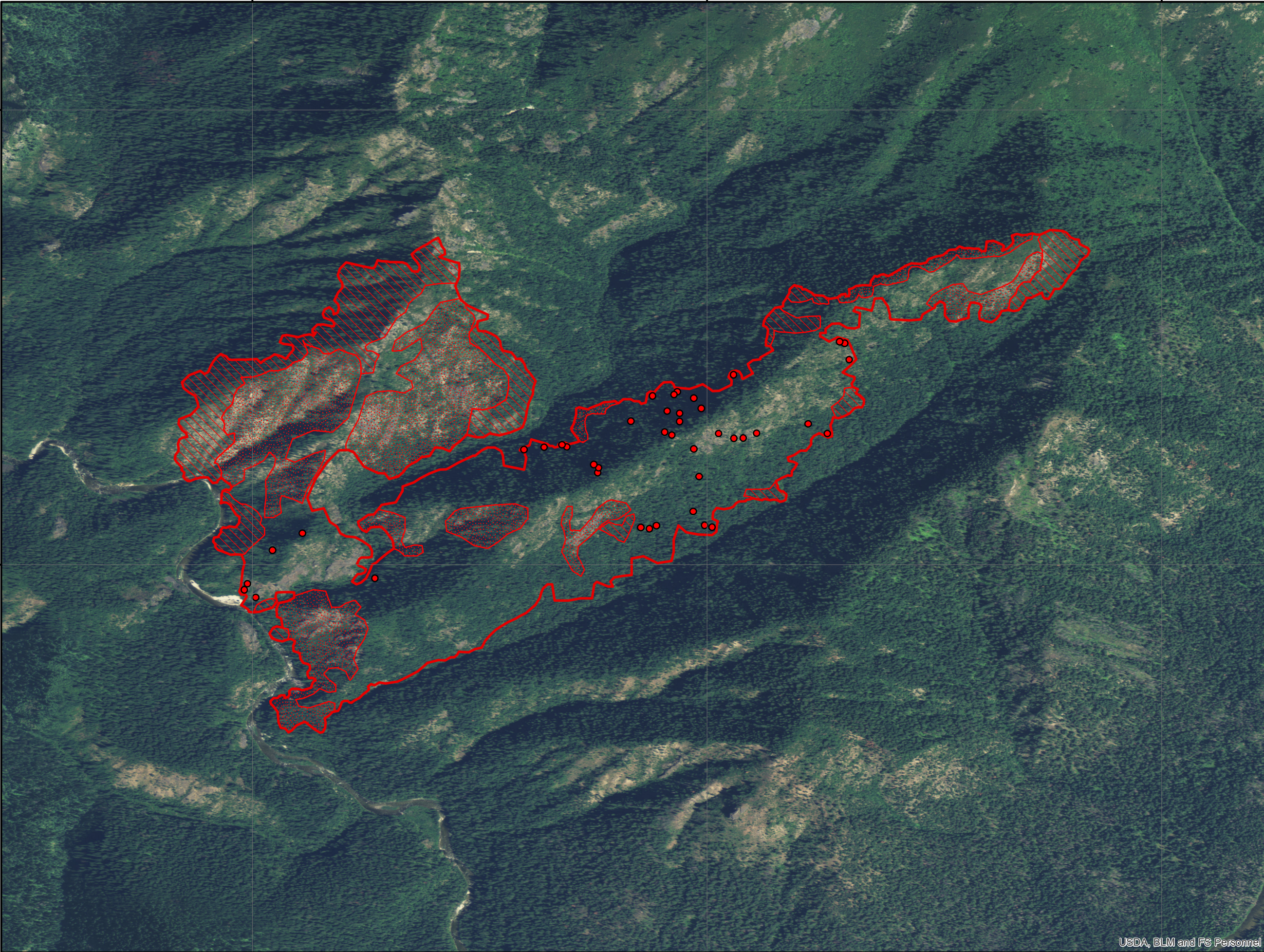
114°54'0"W

114°53'0"W

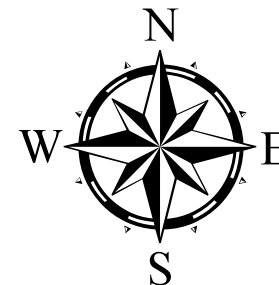
Bailey Fire Infrared Heat Sources



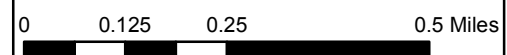
-  Heat Perimeter
 -  Intense Heat Areas
 -  Scattered Heat Areas
 -  Isolated Heat Sources
- GCS North American 1983



IR Interpreter: Brian Monroe
 IR interpreted acres: 469
 Date: 07/06/2015
 Time received the Image: 2111 hrs



1:15,000



USDA, BLM and FS Personnel