

115°25'0"W

115°24'0"W

45°32'0"N

45°32'0"N

45°31'0"N

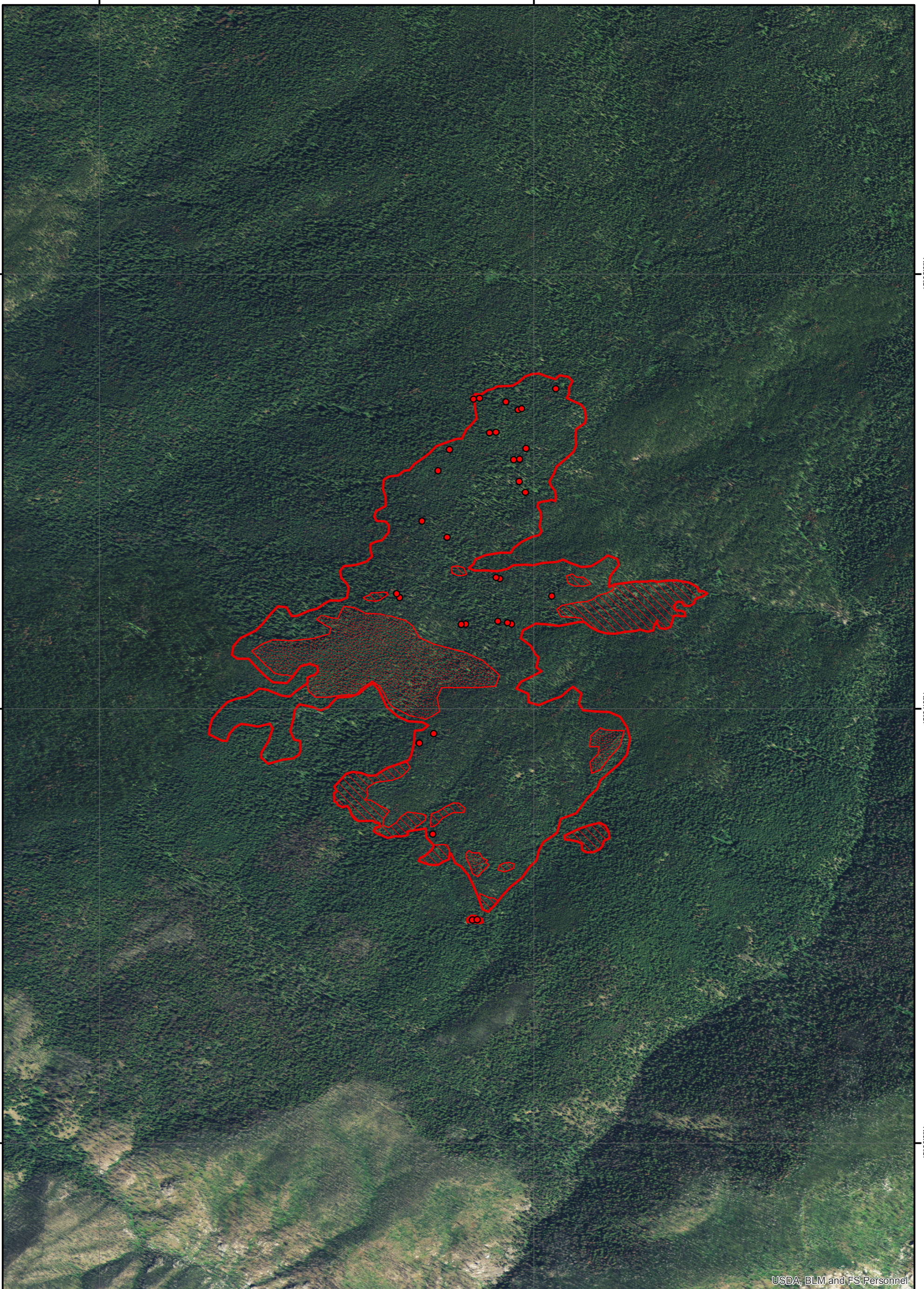
45°31'0"N

45°30'0"N

45°30'0"N

115°25'0"W

115°24'0"W



USDA, BLM and FS Personnel



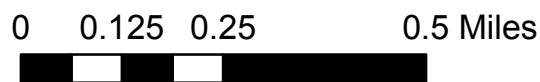
Heat Perimeter
 Intense Heat Areas
 Scattered Heat Areas
 Isolated Heat Sources

GCS North American 1983



Blue Fire Infrared Heat Sources

1:15,000



IR Interpreter: Brian Monroe
 IR interpreted acres: 331
 Date: 07/05/2015
 Time received the Image: 0325 hrs