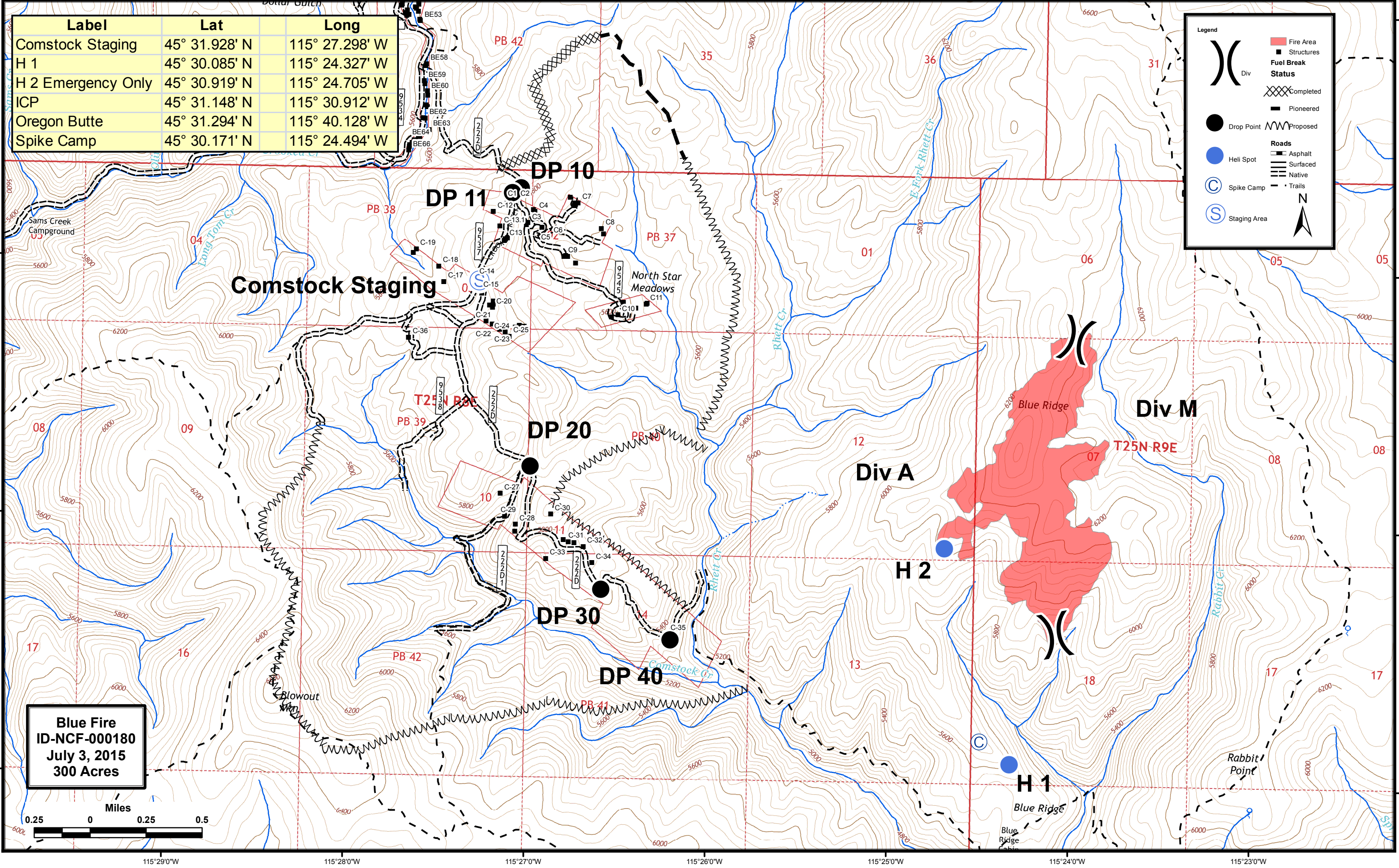


Label	Lat	Long
Comstock Staging	45° 31.928' N	115° 27.298' W
H 1	45° 30.085' N	115° 24.327' W
H 2 Emergency Only	45° 30.919' N	115° 24.705' W
ICP	45° 31.148' N	115° 30.912' W
Oregon Butte	45° 31.294' N	115° 40.128' W
Spike Camp	45° 30.171' N	115° 24.494' W

Legend

- Fire Area (Red shaded area)
- Structures (Black square)
- Fuel Break Status
 - Completed (Cross-hatched line)
 - Pioneered (Dashed line)
 - Proposed (Wavy line)
- Roads
 - Asphalt (Double line)
 - Surfaced (Single line with dashes)
 - Native (Single line with cross-ticks)
 - Trails (Dotted line)
- Drop Point (Black circle)
- Heli Spot (Blue circle)
- Spike Camp (Circle with 'C')
- Staging Area (Circle with 'S')
- Div (Large parentheses)

North Arrow



Blue Fire
 ID-NCF-000180
 July 3, 2015
 300 Acres

