

115°31'0"W 115°30'0"W 115°29'0"W 115°28'0"W 115°27'0"W 115°26'0"W 115°25'0"W 115°24'0"W 115°23'0"W

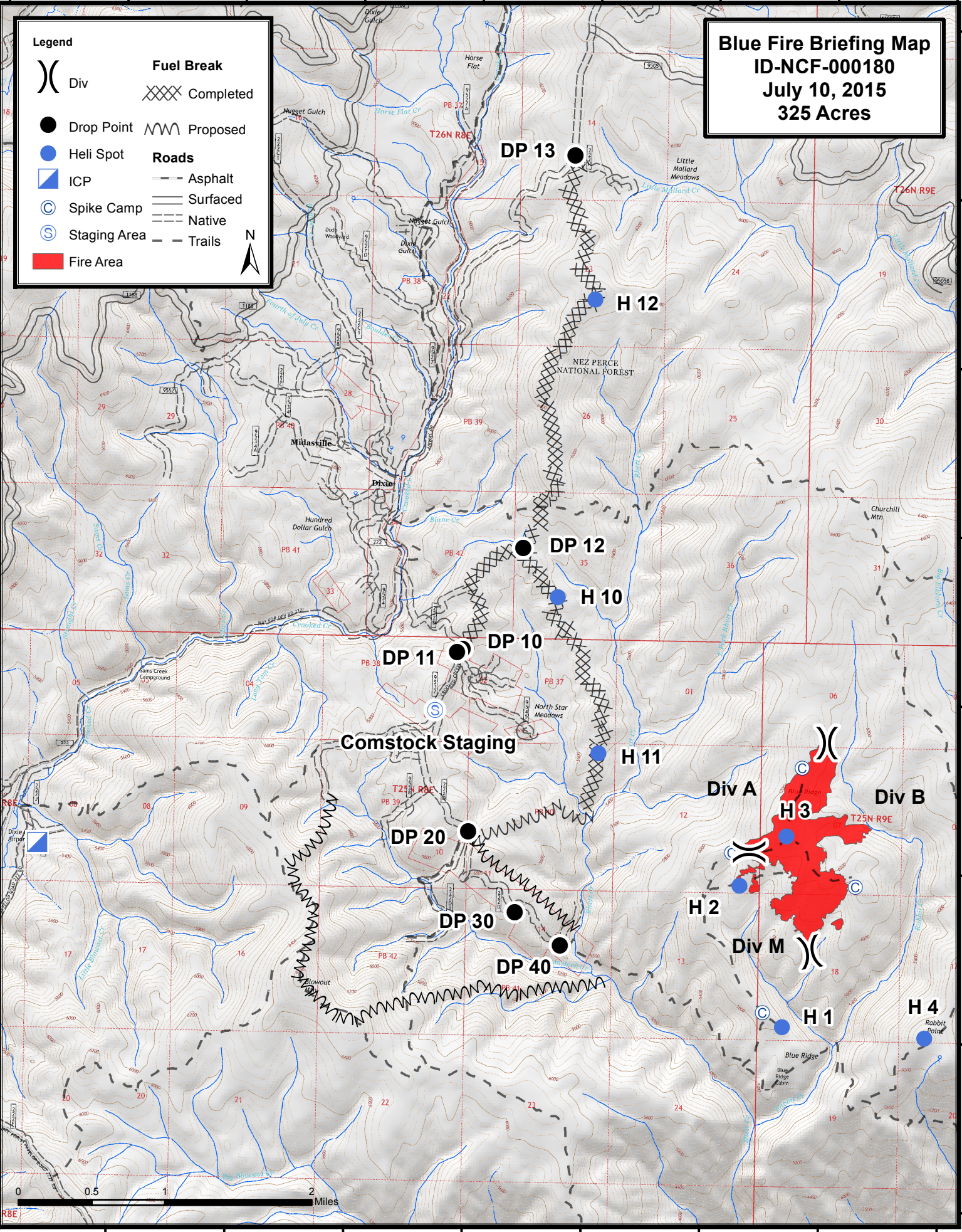
45°36'0"N  
45°35'0"N  
45°34'0"N  
45°33'0"N  
45°32'0"N  
45°31'0"N  
45°30'0"N  
45°29'0"N

**Legend**

( ) Div	Fuel Break Completed
● Drop Point	Fuel Break Proposed
● Heli Spot	<b>Roads</b>
ICP	— Asphalt
⊙ Spike Camp	— Surfaced
⊙ Staging Area	— Native
Fire Area	- - Trails

N

**Blue Fire Briefing Map**  
**ID-NCF-000180**  
**July 10, 2015**  
**325 Acres**



115°30'0"W 115°29'0"W 115°28'0"W 115°27'0"W 115°26'0"W 115°25'0"W 115°24'0"W 115°23'0"W