

111°14'0"W 111°13'30"W 111°13'0"W 111°12'30"W 111°12'0"W 111°11'30"W 111°11'0"W 111°10'30"W

Cabin Gulch Fire

Acreage- 1616

MT-HNF-00119

Operational Period: 7/22/2015 Night Shift

46°22'0"N 46°22'0"N

46°21'30"N 46°21'30"N

46°21'0"N 46°21'0"N

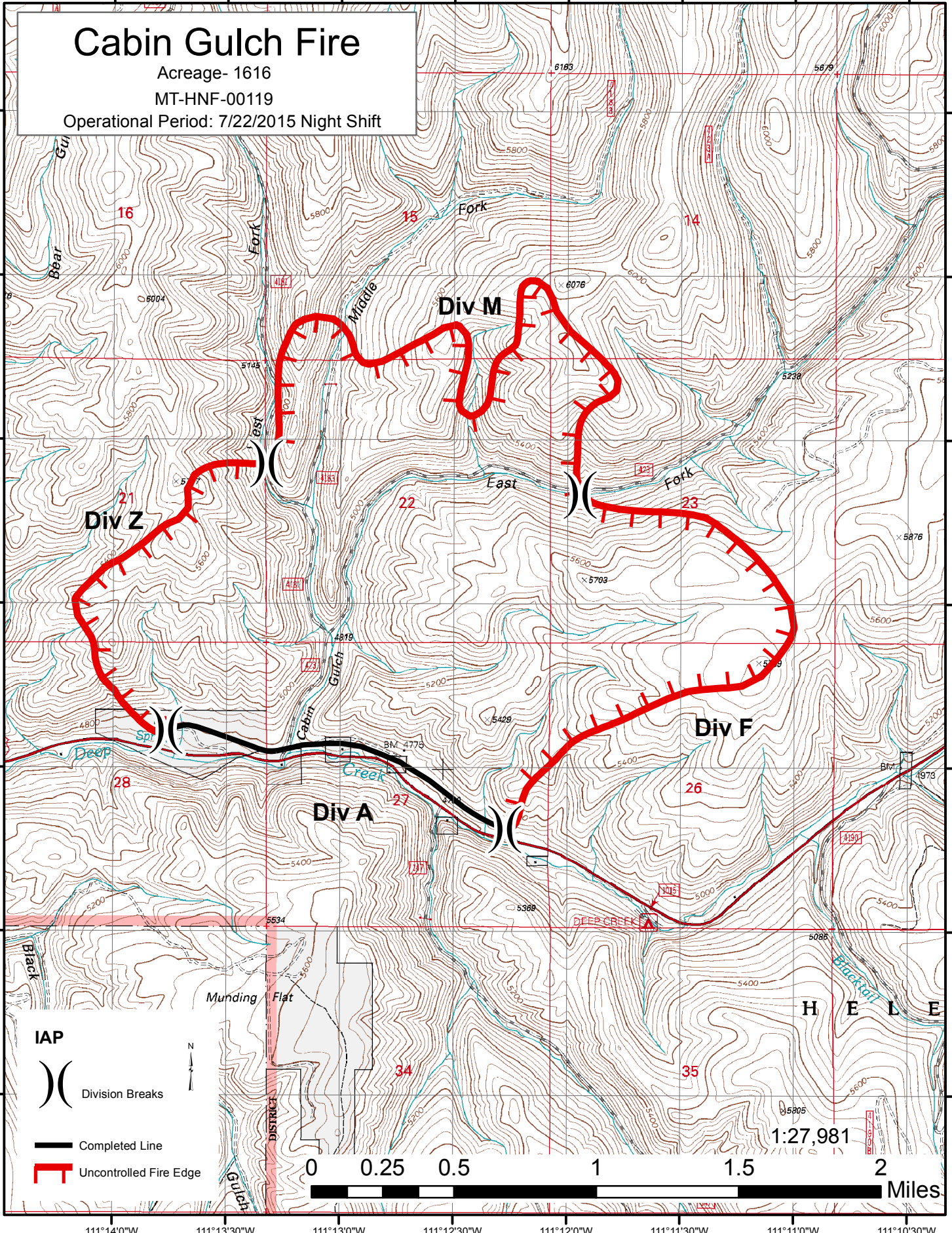
46°20'30"N 46°20'30"N

46°20'0"N 46°20'0"N

46°19'30"N 46°19'30"N

46°19'0"N 46°19'0"N

111°14'0"W 111°13'30"W 111°13'0"W 111°12'30"W 111°12'0"W 111°11'30"W 111°11'0"W 111°10'30"W



IAP

)) Division Breaks

— Completed Line

┌ Uncontrolled Fire Edge



1:27,981

H E L E

Munding Flat

Div M

Div Z

Div A

Div F

Bear Gulch

Fork

Middle Fork

Fork

East Fork

Fork

Cabin Gulch

Creek

Deep

Blacktail

Black

DISTRICT

16

15

14

21

22

23

28

27

26

34

35

6183

5875

5745

6076

5238

5745

5703

5876

4800

4918

5429

BM 4773

BM 4973

5534

5368

5085

5805