

116°33'0"W

116°32'0"W

116°31'0"W

116°30'0"W

116°29'0"W

48°0'0"N

48°0'0"N

47°59'0"N

47°59'0"N

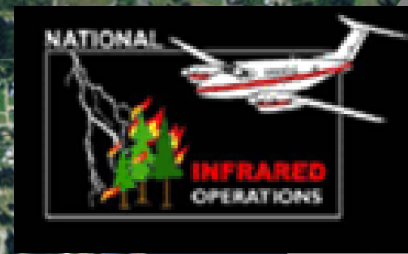
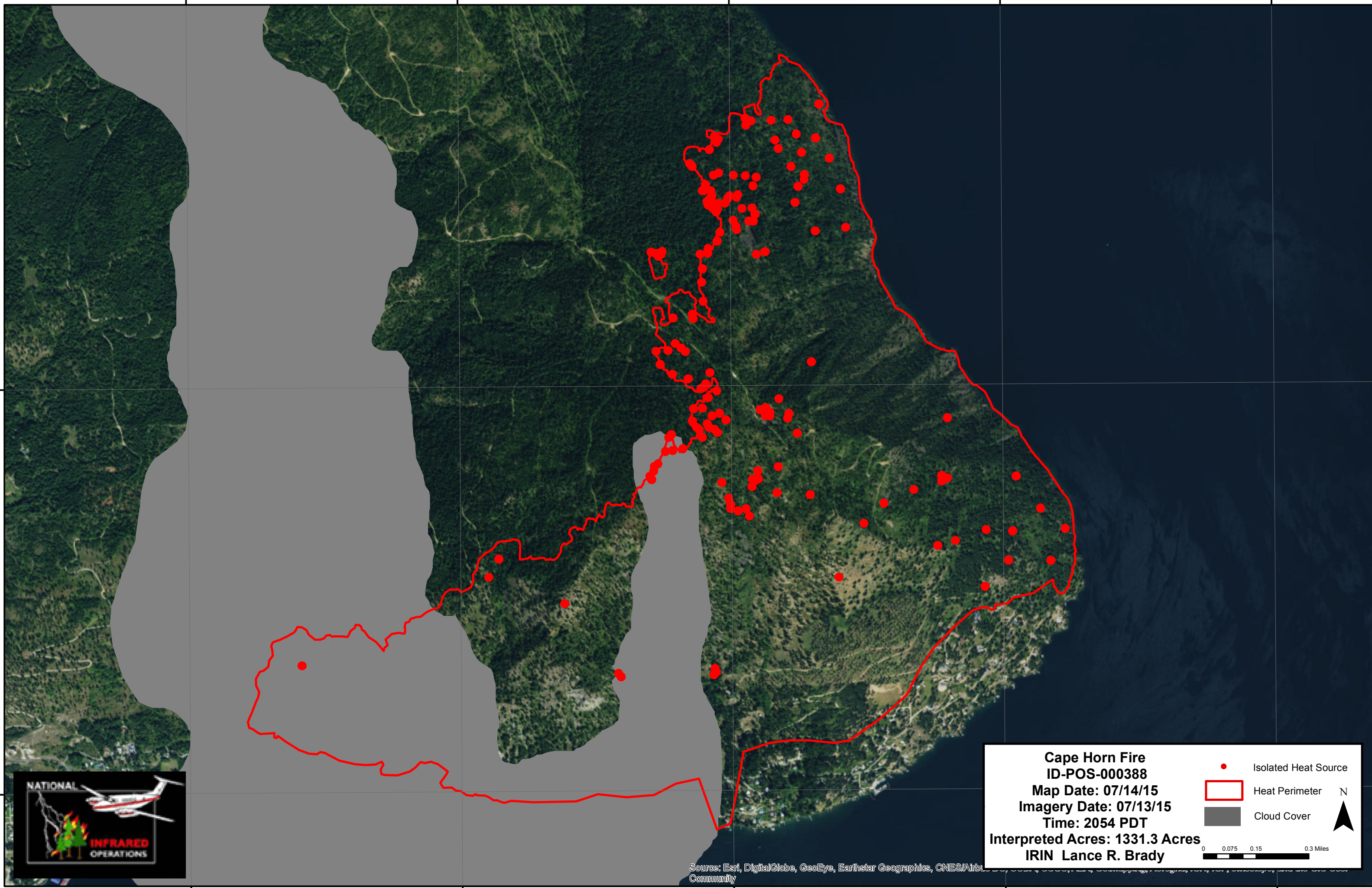
116°33'0"W

116°32'0"W

116°31'0"W

116°30'0"W

116°29'0"W



**Cape Horn Fire**  
**ID-POS-000388**  
**Map Date: 07/14/15**  
**Imagery Date: 07/13/15**  
**Time: 2054 PDT**  
**Interpreted Acres: 1331.3 Acres**  
**IRIN Lance R. Brady**

- Isolated Heat Source
- Heat Perimeter
- Cloud Cover

N

0 0.075 0.15 0.3 Miles

Source: Esri, DigitalGlobe, GeoEye, Earthstar Geographics, CNES/Airbus Community