

116°33'0"W

116°32'0"W

116°31'0"W

116°30'0"W

116°29'0"W

48°0'0"N

48°0'0"N

47°59'0"N

47°59'0"N

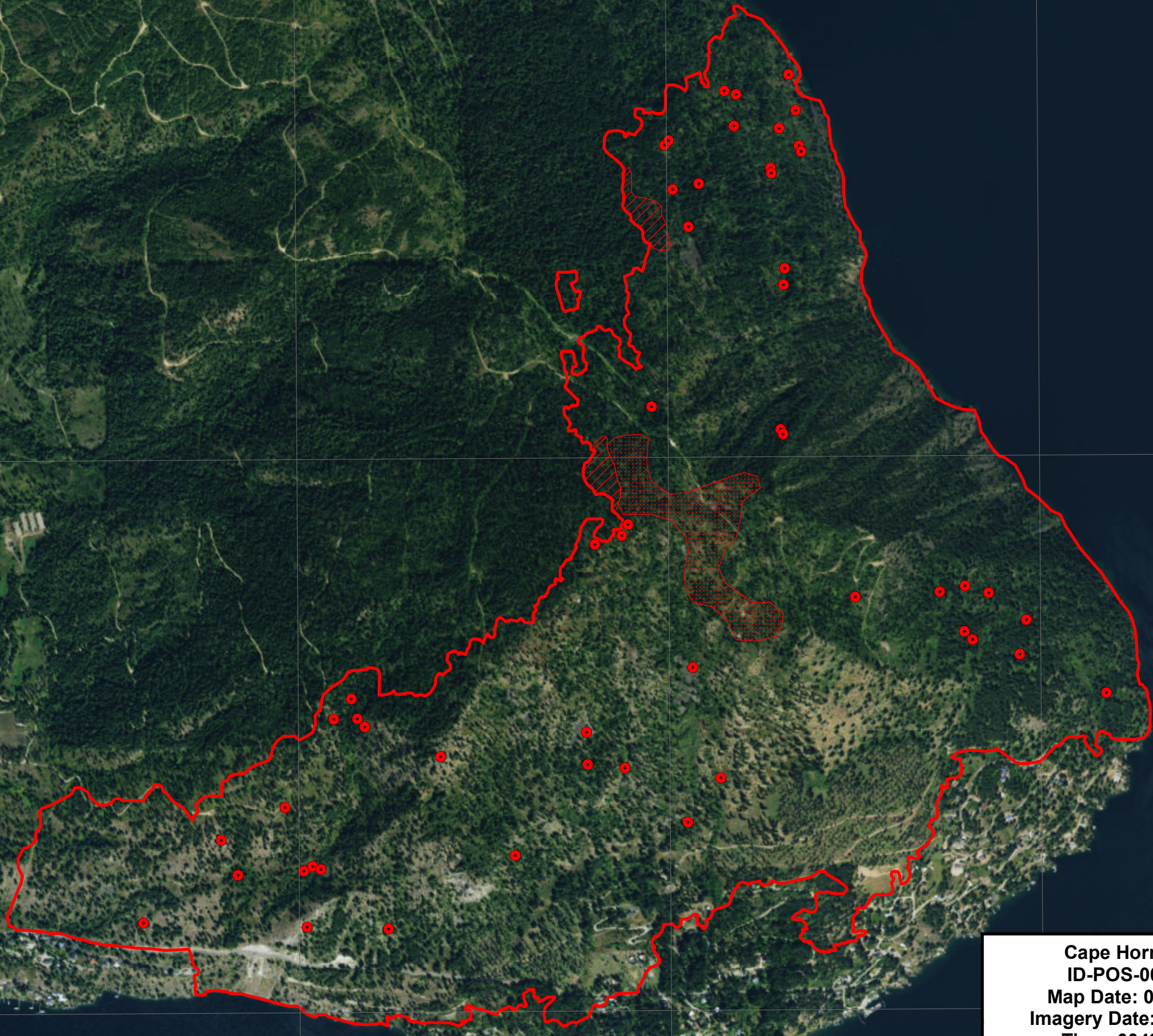
116°33'0"W

116°32'0"W




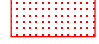
116°31'0"W

116°30'0"W


116°29'0"W




**Cape Horn Fire**  
**ID-POS-000388**  
**Map Date: 07/16/15**  
**Imagery Date: 07/16/15**  
**Time: 0049 PDT**  
**Interpreted Acres: 1293.6 Acres**  
**IRIN Lance R. Brady**

-  Isolated Heat Source
-  Heat Perimeter
-  Intense Heat
-  Scattered Heat

N



0 0.075 0.15 0.3 Miles



Source: Esri, DigitalGlobe, GeoEye, Earthstar Geographics, CNES/Airbus Community