



# Clark Fork Complex Incident Action Plan Saturday, August 22, 2015 Day 0600-2000 PDT Night 1800-0800 PDT

ID-IPF-000293  
P1J10X (0104)



## FALLING SNAGS

Falling snags (dead, standing trees without leaves or needles in the crowns) present a significant hazard to wildland firefighters. Snags typically have much lower fuel moistures than live, green trees; and they burn more readily. In the process, they often throw spot fires far in advance of the main fire and often burn through more quickly than green trees, falling with little or no warning.

The risk of injuries from falling snags increases during the night operational period when visibility is greatly reduced. While the cooler, nighttime period is generally a more effective time to gain control of wildfires, the increased risk from unseen falling snags may limit the widespread use of crews at night in areas of dead and dying timber.

### Environmental conditions that increase risk from falling snags:

- Strong winds
- Night operations
- Steep slopes
- Diseased or bug-killed areas

### Things to consider when assessing the potential hazards of both snags and green trees:

- Trees have been burning for an extended period.
- High-risk tree species (those that are known for rot and shallow root systems) are in the area.
- Numerous downed trees
- Dead or broken tips and limbs overhead
- Accumulation of downed limbs
- Absence of needles, bark or limbs
- Leaning or hung-up trees

### Mitigation measures to take:

- Identify and flag all high-risk snags and green trees.
- Keep personnel out of the high-risk areas until the hazard has been removed.
- Establish lookouts.

INCIDENT OBJECTIVES	1. Incident Name Clark Fork Complex	2. Date 08/21/15	3. Time 1600												
4. Operational Period: 08/22/15 Day: 0600-2000 PDT Night: 1800-0800 PDT															
<p>5. General Control Objectives for the Incident (include alternatives)</p> <p><b>Strategy</b> Confine and contain; develop point protection strategies; protect identified Values at Risk, given resources available.</p> <p><b>Incident Objectives</b></p> <ol style="list-style-type: none"> <li>1. Firefighter, aviation and public safety is the highest priority. Use sound risk management and hazard mitigation processes that weigh probability of success against human life exposure for EVERY management action taken.</li> <li>2. Minimize threats/loss to all identified values including private property; public and private improvements; electronic and communication facilities; T&amp;E species; watershed, riparian and wilderness areas; archeological and historical sites.</li> <li>3. Monitor current area, road and trail closures and provide recommendations to modify closures as warranted to ensure public safety.</li> <li>4. Create and implement a Long Term Plan in coordination with the Forest(s) that protects Values at Risk, emphasizes firefighter and public safety and is commensurate with available resources.</li> <li>5. Provide accurate and timely information to agencies, stakeholders and the public, through meetings, news releases, website updates, reports and personal contacts.</li> <li>6. Keep costs commensurate with resource objectives through regular and ongoing cost analyses.</li> <li>7. Coordinate initial attack response within the TFR area on the Idaho Panhandle and Kootenai National Forests.</li> </ol> <p><b>Incident Requirements</b></p> <ol style="list-style-type: none"> <li>1. Minimize firefighter exposure in areas of standing dead timber throughout the fire areas.</li> <li>2. Coordinate with the Agency Administrator or their representative when considering dozer line construction.</li> <li>3. As can be accomplished safely, use minimum impact suppression tactics to maintain wilderness character and protect resources. Complete documentation of all intrusions (chainsaw use, pump use, helicopter landings/bucket drops) in WSAs.</li> <li>4. All incoming crews, equipment, and vehicles must utilize a weed wash to prevent the introduction of invasive species. In addition to the equipment, crews will remove off-site soil and organic debris. All water delivery equipment will be cleaned prior to use and water sources must be approved by READS prior to cross-use.</li> <li>5. All food and food waste must be stored in bear proof containers. All fire management activities will follow most recent Interagency Grizzly Bear Guidelines.</li> <li>6. Maintain and enhance working relationships with partners, cooperators and stakeholders.</li> <li>7. Coordinate with READS on the rehabilitation of areas impacted by fire management operations.</li> </ol>															
6. Weather Forecast for Period See Attached Weather Forecast															
<p>7. General Safety Message:</p> <p><b>Attitude is a key component in accident prevention.</b></p>															
8. Attachments (mark if attached)															
<table border="0"> <tr> <td><input checked="" type="checkbox"/> Organization List - ICS 203</td> <td><input checked="" type="checkbox"/> Weather Forecast</td> <td><input checked="" type="checkbox"/> Safety Message</td> </tr> <tr> <td><input checked="" type="checkbox"/> Div. Assignment Lists - ICS 204</td> <td><input checked="" type="checkbox"/> Fire Behavior Forecast</td> <td><input type="checkbox"/> Line Supply Order</td> </tr> <tr> <td><input checked="" type="checkbox"/> Communications Plan - ICS 205</td> <td><input checked="" type="checkbox"/> Incident Map</td> <td><input checked="" type="checkbox"/> Unit Log – ICS 214</td> </tr> <tr> <td><input checked="" type="checkbox"/> Medical Plan - ICS 206</td> <td><input checked="" type="checkbox"/> Air Operations– ICS 220</td> <td></td> </tr> </table>				<input checked="" type="checkbox"/> Organization List - ICS 203	<input checked="" type="checkbox"/> Weather Forecast	<input checked="" type="checkbox"/> Safety Message	<input checked="" type="checkbox"/> Div. Assignment Lists - ICS 204	<input checked="" type="checkbox"/> Fire Behavior Forecast	<input type="checkbox"/> Line Supply Order	<input checked="" type="checkbox"/> Communications Plan - ICS 205	<input checked="" type="checkbox"/> Incident Map	<input checked="" type="checkbox"/> Unit Log – ICS 214	<input checked="" type="checkbox"/> Medical Plan - ICS 206	<input checked="" type="checkbox"/> Air Operations– ICS 220	
<input checked="" type="checkbox"/> Organization List - ICS 203	<input checked="" type="checkbox"/> Weather Forecast	<input checked="" type="checkbox"/> Safety Message													
<input checked="" type="checkbox"/> Div. Assignment Lists - ICS 204	<input checked="" type="checkbox"/> Fire Behavior Forecast	<input type="checkbox"/> Line Supply Order													
<input checked="" type="checkbox"/> Communications Plan - ICS 205	<input checked="" type="checkbox"/> Incident Map	<input checked="" type="checkbox"/> Unit Log – ICS 214													
<input checked="" type="checkbox"/> Medical Plan - ICS 206	<input checked="" type="checkbox"/> Air Operations– ICS 220														
9. Prepared by (Planning Section Chief) Al King		9. Approved by (Incident Commander Trainee) Craig Glazier													

ORGANIZATIONAL STRUCTURE CHART		9. Operations Section	
1. Incident Name <b>Clark Fork Complex</b>		Chiefs	Jeff Knudson (9/2)
			Joe Sampson (9/2)
2. Date <b>08/22/2015</b>			
4. Operational Periods: <b>DAY 0600-2000 Day PDT</b> <b>NIGHT 1800-0800 PDT</b>			
5. Incident Commander and Staff		DIV A	Adam Carr
Incident Commander	Craig Glazier (t) (9/2)	DIV Z	Harold Sutherland
Safety Officer	Chris Casey(9/2) , Dennis Talbert (9/2), George Johnson (t) (9/2)	DIV Y	Kevin Smith
Information Officer	Bob MacGregor (9/2), Glenda Scott (9/2), John Head, Nan Stinson	DIV S	Eric Morgan (9/2)
6. Tribal and Agency Representatives			Cody Montgomery (t) (9/2)
Agency	Name	DIV W	John Olson
USFS Agency Administrator	Christine Dawe		David Wilkins
KNF Agency Rep	John Carlson	DIV T	Danny Lemeer
IDL Area Manager	Tom Flear	Night Shift	Joel Sather
READ	Lydia Allen		
7. Planning Section			
Chief	Al King (9/2)		
Resources Unit	Jode Boyles Briggs (9/2)		
Status Check In	Mary Greenwood (8/31), Jennifer Burnham (9/4)		
Computer Technical	Chad Wulf (9/2)		
GIS Specialist	Ray Backstrom (9/2), Molly Purnell (9/4)		
Fire Behavior	Risa Lange-Navarro (9/2)		
GSAN	Jon Rieck (9/2)		
LTAN	Mary Taber (9/2), Diane Abendroth (t)		
SITL	Vicki Stephens	<b>A. Air Operations Branch</b>	
SOPL	Paul Swenson (t)	Branch Director	
IMET	Scott Carpenter (9/4)	Air Attack Supervisor	
8. Logistics Section		Helibase Manager	
Chief	Russ Riebe (9/2), Bill Lauer (9/2)	Air Support Supervisor	Jeff Polack (9/2), Steve Croy (t)
Ordering Manager	Mary Ann Hamilton (9/2)	Helicopter Coordinator	
Facilities	Adam Fisher (9/2)	Air Tanker Coordinator	
Equipment Manager	Jeremiah Greene (9/3)	<b>10. Finance</b>	
Communications Unit	Todd Orr (9/2), Jim Olivarez (9/2)	Chief	Joyce Anderson (9/2)
Medical Unit	Linda Barbee (9/2)	Deputy	
Base Camp Manager	Kyler McCarrell (9/2)	Time Unit	Janis Bouma (t) (9/2)
Supply Unit Leader	Dennis Cameron (9/2)	EQTR/PTRC	Carol Harwood (t) (8/29)
Cabinet RD Logistics	Mike Justice	Compensation/Claims	
Cabinet RD Ordering	Perry Stebbins	Cost Unit	Kevin O.Brien (9/3)
Prepared by: Jode Boyles Briggs RESL			



## FIRE BEHAVIOR FORECAST

<b>FORECAST NUMBER:</b> #2	<b>TYPE OF FIRE:</b> Wildland Fires
<b>FIRE NAME:</b> Clark Fork Complex	<b>OPERATIONAL PERIOD:</b> Day 08/22/15
<b>DATE ISSUED:</b> 08/21/15	<b>TIME ISSUED:</b> 2008 hrs
<b>UNIT:</b> Sandpoint RD/Idaho Panhandle NF/ID & Cabinet RD/Kootenai NF/MT	<b>SIGNED:</b> Risa Lange-Navarro, FBAN <i>/s/ Risa Lange-Navarro</i>

### INPUTS

**WEATHER SUMMARY:** Warmer temps, lighter winds  
See Attached Spot Weather Forecast for further information.  
North ID/Southern Mtns ERC **Observed** for 8/21/15 **74**, **Predicted** for 8/22/15 **77**  
Kootenai NF ERC **Observed** for 8/21/15 **63** **Predicted** for 8/22/15 **57**

### OUTPUTS

#### FIRE BEHAVIOR

##### GENERAL:

- Available fuels include moose moss, grass, some brush, Lodgepole pine, Whitebark pine, Subalpine fir, White fir, Douglas-fir, Western Larch, Ponderosa pine with Western Red Cedar and Western Hemlock at bottoms. Standing dead & snags with jackpots of heavy dead/downed and/or rotten fuels and snags are numerous. Marsh & valley bottoms burning readily and not a barrier. Fuel model 2, 8, 9 & 10. Fuels are extremely dry for this time of year and burning as if it was mid-September. Estimated 1000 hrs fuel moistures 10-13% & live fuel moisture 100%.
- Topography consists of steep, rocky drainages along Bull River & Clark Fork River with flat valley bottoms.
- Main fire behavior has surface fire (head, backing, flanking, creeping & smoldering) with single/group torching trees. Rollouts common with fire burning back upslope. Intensely burning heavy fuel jackpots is igniting tree moss & other ladder fuels torching out and spotting. Spotting distance potential up to 0.2 miles, expect further distance if sustained strong winds or thunderstorm winds occur. Snags & fire weakened trees falling down. Reburn potential is high.
- Watch for alignment of slope, winds and fuels for most active fire behavior.
- Burn period has been from 1000 to 2030 hrs with the main peak hours from 1930-2030 hrs for Bull River fires, 1400-1800 hrs for Whitetail and Scotchman fires.
- Probability of ignition about +/-70% on Unshaded South aspects with Fine Dead Fuel Moisture 4%. **Develop trigger points for your disengagement if fire behavior threatens your safety.**

**SPECIFIC:** Ensure lookouts are in a good safe spot where they can observe the fire activity/weather. Take hourly weather observations and bring them to Clark Fork ICP at end of shift.

**Div A:** Look for fires to continue spreading on all perimeters unchecked by suppression activities with head & backing fire. Expect jackpots of heavy dead/downed fuels to continue burning; single/group tree torching & spotting. Rates of spread: head fire <17 ch/hr, backing <4 ch/hr; Flame Lengths: <16 ft. Spotting up to 0.2 mile. Watch for spots in areas where the smoke column has lain over during yesterday's thunderstorm and frontal passage.

**Div S:** With the wetting rain received yesterday, spread may be moderated until temps warm and RHs decrease. Spread to southwest/south with predominately backing fire. Expect jackpots of heavy dead/downed fuels to continue burning; single/group tree torching & spotting. Rates of spread: head fire <12 ch/hr, backing <2 ch/hr; Flame Lengths: <6 ft. Spotting up to 0.2 mile. Watch for spots in areas where the smoke column has lain over during yesterday's thunderstorm and downslope during the evening hours.

**Div T:** Fire will continue to spread to the west/north/ east and southeast with head/backing/ flanking fire. Expect jackpots of heavy dead/downed fuels to continue burning; single/group tree torching & spotting. Rates of spread: head fire <23 ch/hr, backing <3 ch/hr; Flame Lengths: <13 ft. Spotting up to 0.2 mile. Watch for spots in areas where the smoke column has lain over during yesterday's thunderstorm and frontal passage.

**Div W:** Fires will continue to spread down on both sides of the ridge between Whitetail Peak and Beaver Peak with backing fire and to the east toward the head of Blacktail Cr. Fire is hung up in a regeneration unit on the southwest side. Expect jackpots of heavy dead/downed fuels to continue burning; single/group tree torching & spotting. Rates of spread: head fire <8 ch/hr, backing <3 ch/hr; Flame Lengths: <8 ft. Spotting up to ¼ mile. Watch for spots in areas where the smoke column has lain over to the northeast during the day and downslope during the night.

**Div Y/Z:** Fires will continue to spread on all perimeters unchecked by suppression activities with head & backing fire. Expect jackpots of heavy dead/downed fuels to continue burning; single/group tree torching & spotting. Rates of spread: head fire <17 ch/hr, backing <3 ch/hr; Flame Lengths: <9 ft. Spotting up to 0.2 mile. Watch for spots in areas where the smoke column has lain over during yesterday's thunderstorm and frontal passage.

**Night Operations:** See the above Division breakout above for information on your location throughout the night. Be aware of smoky conditions from the day's fire activity which may obscure your vantage points..

**AIR OPERATIONS:** Look for smoky conditions to mix out with inversion lifting after 1100 hrs, otherwise good day for flying wind wise.

### **SAFETY**

Lots of different fire behavior happening in the past few days so the Standard Fire Order for today is...

**#3 Base all actions on current and expected behavior of the fire.** So how do you do this??? Observe the fire behavior you are currently having and look for the next big change and how it will affect your fire area—is there an increase in winds? –lower RHs occurring? –what about any potential spots from the previous fire run? Then read the forecast—does it fit? –are there changes?

**PLEASE GIVE FEEDBACK, it's greatly appreciated!**

ASSIGNMENT LIST				1. Branch		2. Division/Group	
						<b>A</b>	
3. Incident Name				4. Operational Period			
Clark Fork Complex				Date: 08/22/2015		Time: 0600-2000	
5. Operations Personnel							
Operations Chief		Jeff Knudson, Joe Sampson		Division/Group Supervisor		Adam Carr	
Branch Director				Air Support Group Supervisor		Jeff Polack, Steve Croy (t)	
6. Resources Assigned This Period							
Strike Team/Task Force/ Resource Designator	Last Shift	Leader	No. Pers.	Trans. Needed	Drop Off PT./Time	Pick Up PT./Time	
Trout Creek Brush #134		RURAL	2	N	DP 21 0700	Cabinet Spike 1930	
E-6605		Jason Snellman	4	N	DP 21 0700	Cabinet Spike 1930	
Thompson Falls 141			3	N	DP 21 0700	Cabinet Spike 1930	
Noxon WT-3		RURAL	1	N	DP 21 0700	Cabinet Spike 1930	
Aqua Enterprises WT		M. McNew	1	N	DP 21 0700	Cabinet Spike 1930	
Geronimo IHC		Julius Hostetler	20	N	DP 21 0700	Cabinet Spike 1930	
Backwoods Excavator		Peter Hammond	1	N	DP 21 0700	Cabinet Spike 1930	
Backwoods Bobcat		Levi Klaus	1	N	DP 21 0700	Cabinet Spike 1930	
Jensen Excavator 1		Quentin Jensen	1	N	DP 21 0700	Cabinet Spike 1930	
Jensen Excavator 2		Duane Jensen	1	N	DP 21 0700	Cabinet Spike 1930	
Jensen Dozer		Bill Jensen	1	N	DP 21 0700	Cabinet Spike 1930	
Jensen Skidgine		Joe Brodmarkle	1	N	DP 21 0700	Cabinet Spike 1930	
LEO		JD Griffel	1	N	DP 21 0700	Cabinet Spike 1930	
READ		Mark Mason	1	N	DP 21 0700	Cabinet Spike 1930	
EMT		T Hightower/R. Myers	2	N	DP 21 0700	Cabinet Spike 1930	
SAFETY		Pat Flanary	1	N	DP 21 0700	Cabinet Spike 1930	
HEQB		Brent Cooper	1	N	DP 21 0700	Cabinet Spike 1930	
STEN		Gilham, Krick (t)	2	N	DP 21 0700	Cabinet Spike 1930	
TFLD		Petsch	1	N	DP 21 0700	Cabinet Spike 1930	
7. Control Operations							
Continue improvement along Dry Creek and private property. Hold fire south of Dry Creek Road West of private property. Finish hose lay along dozer line and fuel breaks.							
8. Special Instructions							
Take hourly weather observations and bring to ICP at end of shift.							
Function	Frequency - RX	Frequency - TX	Tone	Channel	Comments		
Command	170.4125	165.9625	141.3	7	ICP TO LINE		
Command							
Tactical	168.0500	168.0500	141.3	1			
Air to Ground	170.1125	170.1125		15			
Prepared by (RESL ) Jode Boyles Briggs		Approved by (PSC)		Date 08/21/2015		Time 2200	

ASSIGNMENT LIST		1. Branch	2. Division/Group			
3. Incident Name		4. Operational Period				
Clark Fork Complex		Date: 08/22/2015		Time: 0600-2000		
5. Operations Personnel						
Operations Chief	Jeff Knudson, Joe Sampson		Division/Group Supervisor	Harold Sutherland		
Branch Director			Air Support Group Supervisor	Jeff Polack, Steve Croy (t)		
6. Resources Assigned This Period						
Strike Team/Task Force/ Resource Designator	Last Shift	Leader	No. Pers.	Trans. Needed	Drop Off PT./Time	Pick Up PT./Time
STEN (t)		Mark Wideman	1	N	East Fork Road 0700	Cabinet Spike 1930
E-44		Abe Becquart	3	N	East Fork Road 0700	Cabinet Spike 1930
E-472		Matt Etienne	3	N	East Fork Road 0700	Cabinet Spike 1930
Noxon E-114		RURAL	2	N	East Fork Road 0700	Cabinet Spike 1930
E-1 Excavator			1	N	East Fork Road 0700	Cabinet Spike 1930
E-20 Excavator		Whitmarsh	2	N	East Fork Road 0700	Cabinet Spike 1930
E-28 Dozer			1	N	East Fork Road 0700	Cabinet Spike 1930
Trout Creek WT-136		RURAL	1	N	East Fork Road 0700	Cabinet Spike 1930
D7 District Crew		Jim Chambers	5	N	East Fork Road 0700	Cabinet Spike 1930
Bull Lake Engine #1260		Clyde Miller	3	N	East Fork Road 0700	Cabinet Spike 1930
T2IA Mississippi		Barker, Black (t)	20	N	East Fork Road 0700	Cabinet Spike 1930
HEQB		Don Baney	1	N	East Fork Road 0700	Cabinet Spike 1930
LEO		JD Griffel	1	N	East Fork Road 0700	Cabinet Spike 1930
EMT		F. Sperlak, M. Littler	2	N	East Fork Road 0700	Cabinet Spike 1930
7. Control Operations						
<p>Hold established lines from A/Z Division break to West Pillick Road.            Look for opportunities to establish use of Pillick Trail as holding line on East flank of Napoleon Fire.</p>						
8. Special Instructions						
<p>Take hourly weather observations and bring to ICP at end of shift.</p>						
Function	Frequency - RX	Frequency - TX	Tone	Channel	Comments	
Command	170.4125	165.9625	141.3	7		
Command						
Tactical	168.2000	168.2000	141.3	2		
Air to Ground	170.1125	170.1125		15		
Prepared by (RESL )		Approved by (PSC)		Date	Time	
Jode Boyles Briggs				08/21/2015	2200	



ASSIGNMENT LIST			1. Branch		2. Division/Group		
3. Incident Name			4. Operational Period				
Clark Fork Complex			Date: 08/22/2015		Time: 0600-2000		
5. Operations Personnel							
Operations Chief		Jeff Knudson, Joe Sampson		Division/Group Supervisor		Kevin Smith	
Branch Director				Air Support Group Supervisor		Jeff Polack, Steve Croy (t)	
6. Resources Assigned This Period							
Strike Team/Task Force/ Resource Designator	Last Shift	Leader	No. Pers.	Trans. Needed	Drop Off PT./Time	Pick Up PT./Time	
Brush 104 T6 Engine		Bledsoe	3	N	Hwy 56/200 0700	Cabinet Spike 1930	
Red Medic E 26		Nielsen	1	N	Hwy 56/200 0700	ICP 2000	
7. Control Operations							
<p>Identify structure protection needs along East Fork Road, Bull River Road, and Highway 20 corridor.            Work with Sheriff Department on notification plan in the event of evacuation.            Monitor movement of Government Fire.</p>							
8. Special Instructions							
<p>Take hourly weather observations and bring to ICP at end of shift.</p>							
Function	Frequency - RX	Frequency - TX	Tone	Channel	Comments		
Command	170.4125	165.9625	141.3	7			
Command							
Tactical	168.6000	168.6000	141.3	3			
Air to Ground	170.1125	170.1125		15			
Prepared by (RESL ) Jode Boyles Briggs		Approved by (PSC)		Date 08/21/2015		Time 2200	

ASSIGNMENT LIST			1. Branch		2. Division/Group		
					<b>S</b>		
3. Incident Name			4. Operational Period				
Clark Fork Complex			Date: 08/22/2015		Time: 0600-2000		
5. Operations Personnel							
Operations Chief		Jeff Knudson, Joe Sampson		Division/Group Supervisor		Eric Morgan, Cody Montgomery (t)	
Branch Director				Air Support Group Supervisor		Jeff Polack, Steve Croy (t)	
6. Resources Assigned This Period							
Strike Team/Task Force/ Resource Designator	Last Shift	Leader	No. Pers.	Trans. Needed	Drop Off PT./Time	Pick Up PT./Time	
TFLD		Ohlwieler, Scrafford (t)	2	N	Clark Fork 0700		
E-1 Wink 650K Dozer		Metzger	2	N	Clark Fork 0700		
E-5 Feller-Buncher 455 EXL		Zielinski	2	N	Clark Fork 0700		
E-12 Skidgine T2		Alderdice	1	N	Clark Fork 0700		
E-13 Skidgine T2		Pittman	2	N	Clark Fork 0700		
E-24 Water Tender		Swisher	1	N	Clark Fork 0700		
TFLD (t)		Bryce Barth	1	N	Clark Fork 0700		
7. Control Operations							
Complete heavy equipment line from Cascade Creek to Blue Creek. Monitor fire growth.							
8. Special Instructions							
Take hourly weather observations and bring to ICP at end of shift.							
Function	Frequency - RX	Frequency - TX	Tone	Channel	Comments		
Command	170.4125	165.9625	141.3	7			
Command							
Tactical	168.6000	168.6000	141.3	3			
Air to Ground	162.6125	162.6125		14			
Prepared by (RESL )		Approved by (PSC)		Date		Time	
Jode Boyles Briggs				08/21/2015		2200	

ASSIGNMENT LIST			1. Branch	2. Division/Group		
3. Incident Name			4. Operational Period			
Clark Fork Complex			Date: 08/22/2015		Time: 0600-2000	
5. Operations Personnel						
Operations Chief	Jeff Knudson, Joe Sampson		Division/Group Supervisor	John Olson, David Wilkins (t)		
Branch Director			Air Support Group Supervisor	Jeff Polack, Steve Croy (t)		
6. Resources Assigned This Period						
Strike Team/Task Force/ Resource Designator	Last Shift	Leader	No. Pers.	Trans. Needed	Drop Off PT./Time	Pick Up PT./Time
IA Module 61		King	3	N	DP 1 0700	ICP 1930
Idaho Panhandle IHC		Nipp	21	N	DP 1 0700	ICP 1930
HEQB		Bill Case, Dennis Gillmer (t)	2	N	DP 1 0700	ICP 1930
TFLD		Reser	1	N	DP 1 0700	ICP 1930
E-6 Dozer Cat D4		Akre	2	N	DP 1 0700	ICP 1930
E-8 Wink Excavator		Winkelseth	2	N	DP 1 0700	ICP 1930
E-661		Loveless	5	N	DP 1 0700	ICP 1930
E-10 Water Tender		Gieser	2	N	DP 1 0700	ICP 1930
E-32 Feller Buncher		Evans	1	N	DP 1 0700	ICP 1930
7. Control Operations						
Utilize air resources and equipment to improve line along ridge from 3092 to DP 3. Limit growth on Marten Fire, establish insertion point for ground resources.						
8. Special Instructions						
Assess protection measures implemented in Dry Creek Seed Orchard. Take hourly weather observations and bring to ICP at end of shift.						
Function	Frequency - RX	Frequency - TX	Tone	Channel	Comments	
Command	170.4125	165.9625	141.3	7		
Command						
Tactical	166.7250	166.7250	141.3	4		
Air to Ground	162.6125	162.6125		14		
Prepared by (RESL ) Jode Boyles Briggs		Approved by (PSC)		Date 08/21/2015		Time 2200

<b>ASSIGNMENT LIST</b>			1. Branch		2. Division/Group		
3. Incident Name Clark Fork Complex			4. Operational Period Date: 08/22/2015		Time: 0600-2000		
5. Operations Personnel							
Operations Chief		Jeff Knudson, Joe Sampson		Division/Group Supervisor		Danny Lemeer	
Branch Director				Air Support Group Supervisor		Jeff Polack, Steve Croy (t)	
6. Resources Assigned This Period							
Strike Team/Task Force/ Resource Designator	Last Shift	Leader	No. Pers.	Trans. Needed	Drop Off PT./Time	Pick Up PT./Time	
Castle Mountain T6 ENG		Brandon Bakken	3	N	DP 20 0700	Cabinet Spike 1930	
7. Control Operations							
<p>Work with Sheriff Department on notification plan in the event of evacuation and recommend public safety measures needed in Ross Creek Cedars and Bad Medicine Campground  Monitor Sawtooth Fire growth.</p>							
8. Special Instructions							
<p>Take hourly weather observations and bring to ICP at end of shift.</p>							
Function	Frequency - RX	Frequency - TX	Tone	Channel	Comments		
Command	170.4125	165.9625	141.3	7			
Command							
Tactical	166.7750	166.7750	141.3	5			
Air to Ground	170.1125	170.1125	15				
Prepared by (RESL ) Jode Boyles Briggs		Approved by (PSC)		Date 08/21/2015		Time 2200	

ASSIGNMENT LIST			1. Branch		2. Division/Group		
					<b>NS</b>		
3. Incident Name			4. Operational Period				
Clark Fork Complex			Date: 08/22/2015		Time: 1800-0800		
5. Operations Personnel							
Operations Chief		Jeff Knudson, Joe Sampson		Division/Group Supervisor		Joel Sather	
Branch Director				Air Support Group Supervisor		N/A	
6. Resources Assigned This Period							
Strike Team/Task Force/ Resource Designator	Last Shift	Leader	No. Pers.	Trans. Needed	Drop Off PT./Time	Pick Up PT./Time	
E-71		Jesse Countryman	2	N	Highway 56/200 1900	Cabinet Spike 0700	
E-1260 Bull Lake VFW		Jeff Drake	3	N	Highway 56/200 1900	Cabinet Spike 0700	
Noxon E-114 ENG			2	N	Highway 56/200 1900	Cabinet Spike 0700	
WT-3, WT-6		Unstaffed /Staged					
7. Control Operations							
<p>Patrol fires along Highway 56 and Scotchman Fire. As necessary notify residents of increased fire behavior approaching their homes.</p>							
8. Special Instructions							
<p>Take hourly weather observations and bring to ICP at end of shift.</p>							
Function	Frequency - RX	Frequency - TX	Tone	Channel	Comments		
Command	170.4125	165.9625	141.3	7			
Command							
Tactical	166.7750	166.7750	141.3	5			
Air to Ground							
Prepared by (RESL )		Approved by (PSC)		Date		Time	
Jode Boyles Briggs				08/21/2015		2200	

# AIR OPERATIONS SUMMARY

Prepared By: Jeff Polack – ASGS

08/21/2015

Prepared Time: 19:00

<b>1. INCIDENT NAME:</b> Clark Fork Complex	<b>2. OPS PERIOD DATE:</b> 08/22/2015	<b>START TIME:</b> 0600	<b>END TIME:</b> 2000	<b>SUNRISE:MT./ID.</b> 0645 / 0551	<b>SUNSET:MT./ID.</b> 2046 / 1949
<b>3. REMARKS (Safety Notes, Hazards, Air Operations Special Equipment):</b> - Communicate known flight hazards to your pilot: wires, towers, snags, other aircraft. - Aircraft requests will be made thru Line Operations. - <b>AFTER Aug 15: Fed aircraft will cease tactical operations after sundown. Flight after sundown should be ferry back to base only.</b>			<b>4. READY ALERT AIRCRAFT MEDEVAC –</b> Contact Clark Fork Complex ICP Communication with Request.		<b>5. TFR's 5/6628</b>

6. PERSONNEL	NAME	PHONE #	7. FREQUENCIES	AM	FM	8. FIXED-WING- Type/ Make-Model/ N#/ Base
ASGS	Jeff Polack	###	Idaho Air / Air	124.650		AIRTANKERS: Request Thru Operations
ASGS (t)	Steve Croy	###	Idaho Air/Ground		162.6125	SEATS: Requested thru Operations
			Montana Air to Air	132.6750		ATGS AIRCRAFT: Request Thru Operations
			Montana Air/Ground		170.1125	
			Air Guard		168.6250 TX tone 110.9	Helispots & Dipsites:
						<u>Name    Longitude    Latitude    Elev    Comments</u>
NOTE: Aircraft requests are placed through Coeur d'Alene Dispatch. Plan ahead for timely arrival of aircraft.						

FAA N#	T Y	MAKE/ MODEL	BASE	MGR.	AVAIL	REMARKS	FAA N#	T Y	MAKE/ MODEL	BASE	MGR.	AVAIL	REMARKS
N414 <i>KNF IA</i>	1	Kmax	Libby S59	Gray	0800	Gallatin EXU	4CH	1	BV-107	Shoshone	###	0800	Ops will place order as needed.
N793HT <i>KNF IA</i>	1	CH-54 SkyCrane	Libby S59	McQueary	0800	Cedar City EXU	9CH	1	BV-107	Shoshone	###	0800	Ops will place order as needed.
N122Z <i>KNF IA</i>	2	Bell 212HP	Libby S59	Benfatti +10	0800	Gallatin Rappel EXU							
N44MA <i>KNF IA</i>	3	Bell 407	Libby S59	Blaz+ 2	0800	Libby EXU							

**NOTE:**

<b>10. TASK/ MISSION/ ASSIGNMENT (Type/ function includes: Air Tactical, Retardant, Recon, Personnel Transport, Bucket Operations, SAR, etc.)</b>													
<b>Missions: OPS, FBAN/LTAN recons; &amp; bucket work as requested; Support Zone I.A. and fire logistics</b>													

# Safety Message

Constantly weigh the **Benefits** to be gained with the **Risks** you are taking.

Safety awareness & mitigation is a process that changes constantly due to many factors such as weather, or topography as the fire progresses across the landscape. Stay aware of changes in tactics and objectives.

Everyone has ownership in individual and in co-worker SAFETY.

Take responsibility and ownership for your actions always.

**Think Ahead and Interpret / Predict What Fire Behavior Will Happen - Before it Happens**

Think about and understand your "Medical Response Plan" should an accident happen on this incident, at YOUR specific location.

- Know where your response resources & medical equipment are, know their capabilities & limitations, and have a backup plan. Discuss individual roles, use of the IAP's Medical Plan and "Nine Line" Medical Incident report contained in it.
- Discuss how response time could be affected by remote conditions, weather, smoke and fire activity, communications and other factors.

**On this incident, a major safety concern is bee stings :**

- Bees and hornets in extremely dry years seem to be abundant and across the Region it is true in 2015. Make an effort to know who on your crew is allergic to bee stings, how severe past reactions have been, and whether they are packing an Epi-pen. Keep in mind that just because you did not react adversely last time you were stung does not mean that will be the case this time or next time.

**Safety Officers:** *Chris Casey, George Johnson, Dennis Talbert & YOU*

# MEDICAL PLAN (ICS 206 WF)

1. Incident/Project Name		2. Operational Period						
Clark Fork Complex		Date/Time 08-22-2015		0600-2200				
3. Ambulance Services								
Name	Complete Address	Phone & EMS Frequency		Advanced Life Support (ALS) Yes No				
Noxon Ambulance Service	Noxon, Montana			NO				
Clark Fork Ambulance	Clark Fork, ID	208-266-1574		YES				
Libby Volunteer Ambulance	Libby, Montana	406-293-4112		YES				
Bonner Emergency EMS	Sandpoint, Montana	208-255-2194		YES				
4. Air Ambulance Services								
Name	Phone	Type of Aircraft & Capability						
Life Flight Northwest	800-232-0911	Rotor and fixed wing , ALS with night capabilities						
Alert Air Rescue	406-752-9797	Helicopter, ALS with night capabilities						
Northwest Medstar	800-5723201	Rotor and Fixed Wing, ALS with night capabilities						
5. Hospitals								
Name Complete Address	GPS Datum – WGS 84 Coordinate Standard Degrees Decimal Minutes DD° MM.MMM' N - Lat DD° MM.MMM' W - Long		Travel Time Air Gnd		Phone	Helipad Yes No		Level of Care Facility
Bonner General, 520 N 3 <sup>rd</sup> Ave, Sandpoint, ID 83864	Lat:		15 min	45-60 min	208-263-1441	<input checked="" type="checkbox"/>	<input type="checkbox"/>	Critical Access
	Long:							
Kootenai Medical 203 Lincoln Way, Coeur d' Alene.83814	Lat:	47 41.49 N	20 min	60-90 min	208-666-2000	<input checked="" type="checkbox"/>	<input type="checkbox"/>	Level 2 Trauma
	Long:	116 47.42 W						
Kalispell Regional Hospital, 310 Sunny View Lane, Kalispell, MT	Lat:	47.604 N			406-752-5111	<input checked="" type="checkbox"/>	<input type="checkbox"/>	Trauma Level 3
	Long:	122.321 W						
6. Division   Branch   Group		Area Location Capability						
ICP / Medical Unit		EMS Responders & Capability:		MEDL and Paramedic at night.				
		Equipment Available on Scene:		First Aid and Basic Life Support				
		Medical Emergency Channel:		Command 1				
		Ambulance to Scene		45 minutes				
		Air:		30 min				
		Approved Helispot:		yes				
		Lat:		43 03.51 N				
		Long:		116 01.58 W				
DIV A		EMS Responders & Capability:		2 EMTs				
		Equipment Available on Scene:		Basic Life Support				
		Medical Emergency Channel:		Command 1				
		ETA for Ambulance to Scene:						



## MEDICAL PLAN (ICS 206 WF)

	<b>Air:</b>	45 min
	<b>Approved Helispot:</b>	
	<b>Lat:</b>	48 11.93 3 N
	<b>Long:</b>	115 51.687 W
DIV Z	<b>EMS Responders &amp; Capability:</b>	2 EMTs Paramedic (Red Medic) response upon DIV request.
	<b>Equipment Available on Scene:</b>	Basic Life Support
	<b>Medical Emergency Channel:</b>	Command 1
	<b>ETA for Ambulance to Scene:</b>	
	<b>Air:</b>	
	<b>Lat:</b>	
	<b>Long:</b>	
	<b>Air:</b>	45 min
	<b>Approved Helispot:</b>	
	<b>Lat:</b>	48 11.93 3 N
<b>Long:</b>	115 51.687 W	
DIV Y	<b>EMS Responders &amp; Capability:</b>	Paramedic (Red Medic)
	<b>Equipment Available on Scene:</b>	
	<b>Medical Emergency Channel:</b>	Command 1
	<b>ETA for Ambulance to Scene:</b>	
	<b>Air:</b>	
	<b>Lat:</b>	
	<b>Long:</b>	

	<b>Air:</b>	
	<b>Approved Helispot:</b>	
	<b>Lat:</b>	
	<b>Long:</b>	
DIV T	<b>EMS Responders &amp; Capability:</b>	Paramedic (Red Medic) available to respond upon Division request.
	<b>Equipment Available on Scene:</b>	
	<b>Medical Emergency Channel:</b>	Command 1
	<b>ETA for Ambulance to Scene:</b>	
	<b>Air:</b>	
	<b>Lat:</b>	
	<b>Long:</b>	

	<b>Air:</b>	
	<b>Approved Helispot:</b>	
	<b>Lat:</b>	
	<b>Long:</b>	
DIV NS	<b>EMS Responders &amp; Capability:</b>	Medical will respond from ICP as needed
	<b>Equipment Available on Scene:</b>	
	<b>Medical Emergency Channel:</b>	Command 1
	<b>ETA for Ambulance to Scene:</b>	
	<b>Air:</b>	
	<b>Lat:</b>	
	<b>Long:</b>	

7. Name & Location	Area Location Capability	
DIV S	<b>EMS Responders &amp; Capability:</b>	Paramedic (Red Medic) available to respond upon DIV request.
	<b>Equipment Available on Scene:</b>	
	<b>Medical Emergency Channel:</b>	Command 1
	<b>ETA for Ambulance to Scene:</b>	
	<b>Air:</b>	
	<b>Approved Helispot :</b>	
	<b>Lat:</b>	

## MEDICAL PLAN (ICS 206 WF)

	<b>Long:</b>		
<b>DIV W</b>	<b>EMS Responders &amp; Capability</b>	<b>Paramedic (Red Medic) available to respond upon DIV request.</b>	
	<b>Equipment Available on Scene:</b>		
	<b>Medical Emergency Channel:</b>	<b>Command 1</b>	
	<b>ETA for Ambulance to Scene:</b>		
	<b>Air:</b>		
	<b>Approved Helispot:</b>		
	<b>Lat:</b>		
	<b>Long:</b>		
<b>8. Prepared By: MEDL</b>		<b>9. Date/Time</b>	<b>10. Reviewed By (Safety Officer)</b>
Linda Barbee		08/21/2015 2000	Chris Casey
			<b>11. Date/Time</b>
			08/21/15 @ 2000 hrs.

Upon occurrence of a “**MAJOR MEDICAL EMERGENCY**” on the fireline **LINE OPS** should respond directly to the scene to take control of the situation and direct necessary actions. If **LINE OPS** is unavailable, the **nearest fireline Supervisor or Leader** needs to take charge. **Contact ICP Communications on Command 1 repeater to initiate Medical Emergency Operations.**

1. Declare the nature of the emergency. Medical injury/illness. If the injury/illness is Life Threatening?
2. If Life Threatening, request the designated frequency be cleared for emergency traffic.
3. Identify on-scene Point of Contact (POC) by Resource and Last Name (i.e. POC is TFLD Smith).
4. Identify nature of incident, number injured, patient(s) assessment(s) and location (geographic and GPS coordinates).
5. Identify on-scene medical personnel by position and name (i.e. EMT Jones).
6. Identify preferred method of patient transport.
7. Request any additional resources and/or equipment needed.
8. Document all information received and transmitted on radio or phone.
9. Identify any changes in on-scene Point of Contact or medical personnel as they occur.

# MEDICAL PLAN (ICS 206 WF)

Medical Incident Report					
FOR ALL MEDICAL EMERGENCIES: IDENTIFY ON SCENE INCIDENT COMMANDER BY NAME AND POSITION AND ANNOUNCE TO INITIATE RESPONSE FROM IMT COMMUNICATIONS/DISPATCH.					
<b>Use items one through nine to communicate situation to communications/dispatch.</b>					
<b>1. CONTACT COMMUNICATIONS/DISPATCH</b>					
<i>Ex: "Communications, Div. Alpha. Stand-by for Priority Medical Incident Report." (If life threatening request designated frequency be cleared for emergency traffic.)</i>					
<b>2. INCIDENT STATUS:</b> Provide incident summary and command structure.					
Nature of Injury/Illness			Describe the injury <i>(Ex: Broken leg with bleeding)</i>		
Incident Name			Geographic Name + "Medical" <i>(Ex: Trout Meadow Medical)</i>		
Incident Commander			Name of IC		
Patient Care			Name of Care Provider <i>(Ex: EMT Smith)</i>		
<b>3. INITIAL PATIENT ASSESSMENT:</b> Complete this section for each patient. This is only a brief, initial assessment. Provide additional patient info after completing this 9 Line Report.					
Number of Patients:	Male / Female	Age:	Weight:		
Conscious? <input type="checkbox"/> YES <input type="checkbox"/> NO = MEDEVAC!		Breathing? <input type="checkbox"/> YES <input type="checkbox"/> NO = MEDEVAC!			
Mechanism of Injury: <i>What caused the injury?</i>					
Lat/Long (Datum WGS84) <i>Ex: N 40° 42.45' x W 123° 03.24'</i>					
<b>4. SEVERITY OF EMERGENCY, TRANSPORT PRIORITY</b>					
SEVERITY			TRANSPORT PRIORITY		
<input type="checkbox"/> <b>URGENT-RED</b> Life threatening injury or illness. <i>Ex: Unconscious, difficulty breathing, bleeding severely, 2° - 3° burns more than 4 palm sizes, heat stroke, disoriented.</i>			Ambulance or MEDEVAC helicopter. Evacuation need is <b>IMMEDIATE.</b>		
<input type="checkbox"/> <b>PRIORITY-YELLOW</b> Serious Injury or illness. <i>Ex: Significant trauma, not able to walk, 2° - 3° burns not more than 1-2 palm sizes.</i>			Ambulance or consider air transport if at remote location. Evacuation may be <b>DELAYED.</b>		
<input type="checkbox"/> <b>ROUTINE-GREEN</b> Not a life threatening injury or illness. <i>Ex: Sprains, strains, minor heat-related illness.</i>			Non-Emergency. Evacuation considered <b>Routine of Convenience.</b>		
<b>5. TRANSPORT PLAN:</b>					
<b>Air Transport:</b> (Agency Aircraft Preferred)					
<input type="checkbox"/> Helispot		<input type="checkbox"/> Short-haul/Hoist		<input type="checkbox"/> Life Flight	
				<input type="checkbox"/> Other	
<b>Ground Transport:</b>					
<input type="checkbox"/> Self-Extract		<input type="checkbox"/> Carry-Out		<input type="checkbox"/> Ambulance	
				<input type="checkbox"/> Other	
<b>6. ADDITIONAL RESOURCE/EQUIPMENT NEEDS:</b>					
<input type="checkbox"/> Paramedic/EMT(s)		<input type="checkbox"/> Crew(s)		<input type="checkbox"/> SKED/Backboard/C-Collar	
<input type="checkbox"/> Burn Sheet(s)		<input type="checkbox"/> Oxygen		<input type="checkbox"/> Trauma Bag	
<input type="checkbox"/> Medication(s)		<input type="checkbox"/> IV/Fluid(s)		<input type="checkbox"/> Cardiac Monitor/AED	
<input type="checkbox"/> Other (i.e. splints, rope rescue, wheeled litter)					
<b>7. COMMUNICATIONS:</b>					
Function	Channel Name/Number	Receive (Rx)	Tone/NAC *	Transmit (Tx)	Tone/NAC *
<i>Ex: Command</i>	<i>Forest Rpt, Ch. 2</i>	<i>168.3250</i>	<i>110.9</i>	<i>171.4325</i>	<i>110.9</i>
COMMAND					
AIR-TO-GRND					
TACTICAL					
*(NAC for digital radio system)					
<b>8. EVACUATION LOCATION:</b>					
Lat/Long (Datum WGS84) <i>EX: N 40 42.45' x W 123 03.24'</i>					
Patient's ETA to Evacuation Location:					
Helispot/Extraction Size and Hazards:					
<b>9. CONTINGENCY:</b>					
<b>Considerations:</b> If primary options fail, what actions can be implemented in conjunction with primary evacuation method? Be thinking ahead...			<b>REMEMBER:</b> <i>Remember to provide patient information to the receiving facility. Be clear, concise, and use proper terminology.</i>		

## Clark Fork Complex

### Incident within an Incident Emergency Action Plan

In the case of a serious accident requiring patient transport to a medical facility:

- The closest ranking Operations Leader (i.e. Division Supervisor) at the accident scene will take charge and be the Point of Contact (POC).
- Mobilize the closest paramedic/EMT to the scene by ground or air to treat the patient(s) and package for transport.
- Use the Medical Plan ICS 206WF and Incident Medical Report Form (Nine Line) in the IAP to collect and document patient information, communicate with ICP Communications and plan for two types of transport (ground and air).
- Operations Section Chief (Line or Plans) will direct medical emergency response from ICP or on-scene.
- Upon notification of a serious accident, the Incident Commander, Safety Officer, Operations Section Chief (Plans), Air Support Group Supervisor and Medical Unit Leader will report to the ICP Communications.
- Incident Communications will notify Coeur d' Alene Interagency Dispatch Center (CDC) (208-772-3283) and coordinate patient transportation.
- All other Command and General Staff will go to ICP communications to monitor the situation and be available if needed to assist.
- Incident Radio traffic will be monitored 24 hours a day at the Clark Fork ICP.

Approved by: \_\_\_\_\_ Incident Commander

Date: \_\_\_\_\_

*C. R. J.*  
*8/20/15*

<b>INCIDENT RADIO COMMUNICATIONS PLAN</b>	1. Incident Name	2. Date/ Time Prepared	3. Operational Period Date/Time
---	------------------	------------------------	---------------------------------

**4. Basic Radio Channel Utilization**  
**Mode: W=Wideband Analog, N=Narrowband Analog, D=Digital, M=Mixed**

Channel	Function	RX:	Frequency	Tone	Mode	Assignment	Remarks
1		TX:					
2		TX:					
3		TX:					
4		TX:					
5		TX:					
6		TX:					
7		TX:					
8		TX:					
9		TX:					
10		TX:					
11		TX:					
12		TX:					
13		TX:					
14		TX:					
15		TX:					
16		TX:					

5. Prepared by (Communications Unit)

CLARK FORK COMPLEX PHONE LIST

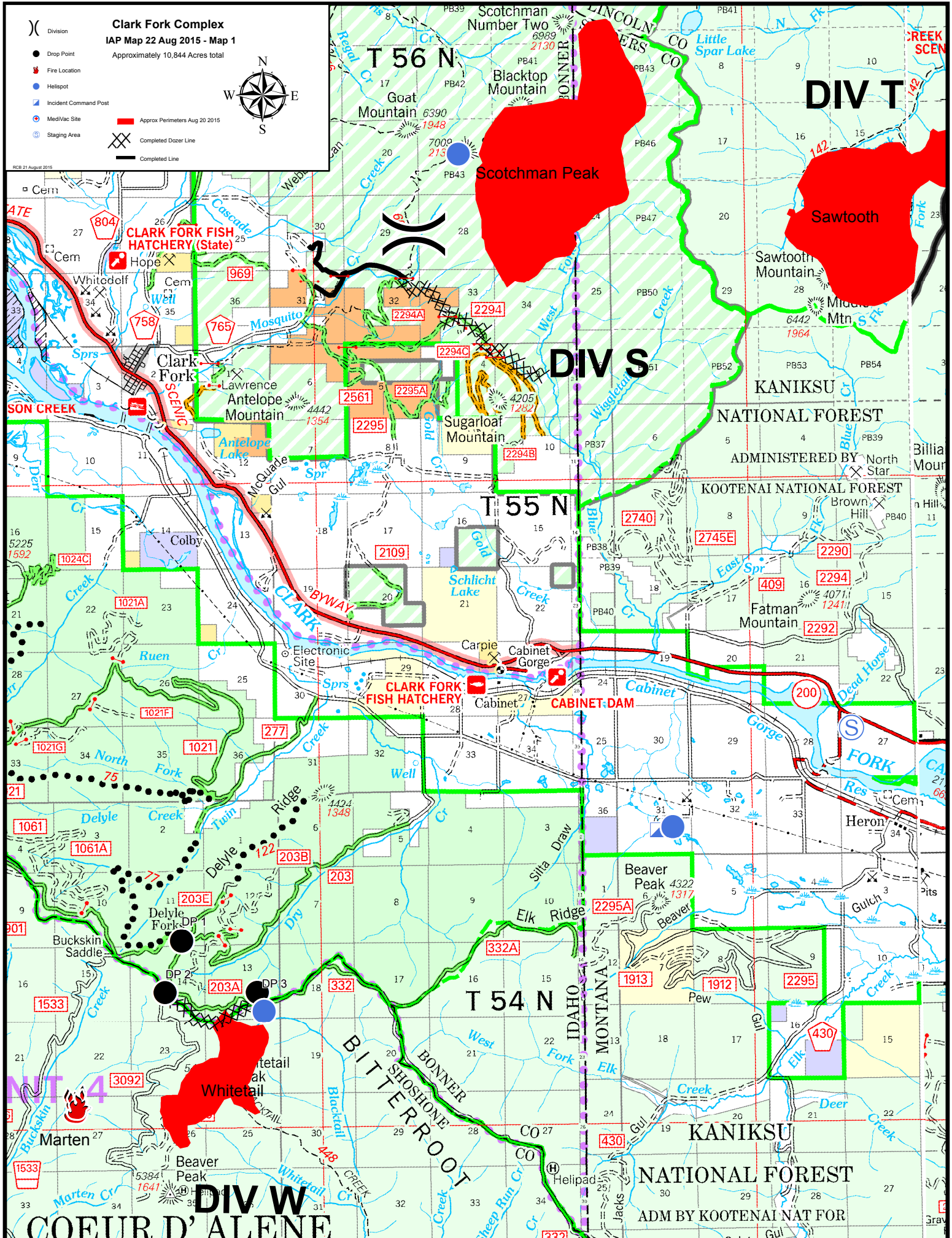
Name	Title	Office	Cell
Christine Dawe	Clark Fork Agency Administrator		(406) 370-8865
John Carlson	KNF Agency Representative	(406) 837-7634	
Celeste Hancock	Dispatch Center Manager C'dA	(208) 762-6904	(208) 659-1346
Heather Good	Incident Business Manager IPNF	(208) 983-4096	(208) 451-4207
Terri Tangen	Incident Business Manager KNF		
Mike Behrens	IPNF Fire Staff	(208) 659-1392	(208) 659-1392
Chad Hudson	Couer d'Alene RD		(208) 661-9119
Tom Fleer	IDL- Area Manager Pend Orielle	(208) 265-5104	(208) 610-3744
Shawn Hicks	IDL Fire Warden Pend Orielle	(208) 263-5104	(208) 304-4218
Sam Gibbons	Couer d'Alene RD DFMO	(208) 660-5547	
Erick Walker	Sand Point District Ranger		(208) 290-6698
Carolyn Blatz	KNF Helibase	(406) 283-7865	

Land lines have not yet been established at ICP.



**Clark Fork Complex**  
**IAP Map 22 Aug 2015 - Map 1**  
 Approximately 10,844 Acres total

- Division
- Drop Point
- Fire Location
- Hotspot
- Incident Command Post
- MediVac Site
- Staging Area
- Approx Perimeters Aug 20 2015
- Completed Dozer Line
- Completed Line



**DIV T**

**DIV S**

**DIV W**

**COEUR D'ALENE**

**KANIKSU NATIONAL FOREST**  
 ADM BY KOOTENAI NAT FOR







