



Clark Fork Complex Incident Action Plan Sunday, August 23, 2015 Day 0600-2000 PDT Night 1800-0800 PDT

ID-IPF-000923

P1J10X (0104)



DRIVING SAFELY



Driving is one of the most hazardous things we do because we literally perform the task hundreds of times in the course of our daily lives we tend to take it for granted. Based on recent accident trends, vehicle accidents are the source of more deaths and serious injuries to wildland firefighters than any other single cause.

To be a safe driver you have to want to be one. Take a good hard look at your driving habits. Are you training yourself to do the right things the right way, like fastening your seat belt, checking your mirrors, and maintaining safe following distances?

Inattentiveness is a major contributing factor in motor vehicle accidents within the wildland firefighting community. Since the average adult attention span is 15-20 minutes we must develop techniques that allow us to refocus our attention on our driving.

Many things can lure our attention away from our driving such as: fatigue, eating and drinking, reading directions and maps, writing, cell phone and radio use, conversation within the vehicle and music.

- Drive only when you are well rested and alert and avoid driving during the hours of 10:00 PM and 6:00 AM. Take a 10 to 15 minute break after every 2 hours.
- Practice situational awareness; be aware of what is happening in front, behind, and on both sides of your vehicle.
- Never drive when taking medications that make you drowsy.
- Delegate navigation and communication to a passenger or pull over.
- By constantly moving your vision, checking mirrors and distant road conditions, you can avoid highway hypnosis and daydreaming.
- Avoid eating or drinking while driving.
- When talking with passengers, keep your eyes on the road and both hands on the steering wheel. Avoid serious or argumentative conversations.
- Do not be in a hurry, be patient.
- Safe driving starts with a safe vehicle. Something as simple as under-inflated tires can have serious consequences. Before operating any vehicle, do a walk-around to look for potential problems, make sure the lights and blinkers work, and adjust your seat and mirrors. If it is the first time you have driven the vehicle, make yourself aware of where everything is.

INCIDENT OBJECTIVES	1. Incident Name Clark Fork Complex	2. Date 08/22/15	3. Time 1600												
4. Operational Period: 08/23/15 Day: 0600-2000 PDT Night: 1800-0800 PDT															
<p>5. General Control Objectives for the Incident (include alternatives)</p> <p>Strategy Utilize a combination of confine/contain and point protection strategies to protect identified Values at Risk, given resources available.</p> <p>Incident Objectives</p> <ol style="list-style-type: none"> 1. Firefighter, aviation and public safety is the highest priority. Use sound risk management and hazard mitigation processes that weigh probability of success against human life exposure for EVERY management action taken. 2. Minimize threats/loss to all identified values including private property; public and private improvements; electronic and communication facilities; T&E species; watershed, riparian and wilderness areas; archeological and historical sites. 3. Monitor current area, road and trail closures and provide recommendations to modify closures as warranted to ensure public safety. 4. Create and implement a Long Term Plan in coordination with the Forest(s) that protects Values at Risk, emphasizes firefighter and public safety and is commensurate with available resources. 5. Provide accurate and timely information to agencies, stakeholders and the public, through meetings, news releases, website updates, reports and personal contacts. 6. Keep costs commensurate with resource objectives through regular and ongoing cost analyses. 7. Coordinate initial attack response within the TFR area on the Idaho Panhandle and Kootenai National Forests. <p>Incident Requirements</p> <ol style="list-style-type: none"> 1. Minimize firefighter exposure in areas of standing dead timber throughout the fire areas. 2. Coordinate with the Agency Administrator or their representative when considering dozer line construction. 3. As can be accomplished safely, use minimum impact suppression tactics to maintain wilderness character and protect resources. Complete documentation of all intrusions (chainsaw use, pump use, helicopter landings/bucket drops) in WSAs. 4. All incoming crews, equipment, and vehicles must utilize a weed wash to prevent the introduction of invasive species. In addition to the equipment, crews will remove off-site soil and organic debris. All water delivery equipment will be cleaned prior to use and water sources must be approved by READS prior to cross-use. 5. All food and food waste must be stored in bear proof containers. All fire management activities will follow most recent Interagency Grizzly Bear Guidelines. 6. Maintain and enhance working relationships with partners, cooperators and stakeholders. 7. Coordinate with READS on the rehabilitation of areas impacted by fire management operations. 															
6. Weather Forecast for Period See Attached Weather Forecast															
<p>7. General Safety Message:</p> <p style="text-align: center;"><i>Our most important safety tool is our brain.</i></p>															
<p>8. Attachments (mark if attached)</p> <table border="0" style="width: 100%;"> <tr> <td><input checked="" type="checkbox"/> Organization List - ICS 203</td> <td><input checked="" type="checkbox"/> Weather Forecast</td> <td><input checked="" type="checkbox"/> Safety Message</td> </tr> <tr> <td><input checked="" type="checkbox"/> Div. Assignment Lists - ICS 204</td> <td><input checked="" type="checkbox"/> Fire Behavior Forecast</td> <td></td> </tr> <tr> <td><input checked="" type="checkbox"/> Communications Plan - ICS 205</td> <td><input checked="" type="checkbox"/> Incident Map</td> <td><input checked="" type="checkbox"/> Unit Log – ICS 214</td> </tr> <tr> <td><input checked="" type="checkbox"/> Medical Plan - ICS 206</td> <td><input checked="" type="checkbox"/> Air Operations– ICS 220</td> <td></td> </tr> </table>				<input checked="" type="checkbox"/> Organization List - ICS 203	<input checked="" type="checkbox"/> Weather Forecast	<input checked="" type="checkbox"/> Safety Message	<input checked="" type="checkbox"/> Div. Assignment Lists - ICS 204	<input checked="" type="checkbox"/> Fire Behavior Forecast		<input checked="" type="checkbox"/> Communications Plan - ICS 205	<input checked="" type="checkbox"/> Incident Map	<input checked="" type="checkbox"/> Unit Log – ICS 214	<input checked="" type="checkbox"/> Medical Plan - ICS 206	<input checked="" type="checkbox"/> Air Operations– ICS 220	
<input checked="" type="checkbox"/> Organization List - ICS 203	<input checked="" type="checkbox"/> Weather Forecast	<input checked="" type="checkbox"/> Safety Message													
<input checked="" type="checkbox"/> Div. Assignment Lists - ICS 204	<input checked="" type="checkbox"/> Fire Behavior Forecast														
<input checked="" type="checkbox"/> Communications Plan - ICS 205	<input checked="" type="checkbox"/> Incident Map	<input checked="" type="checkbox"/> Unit Log – ICS 214													
<input checked="" type="checkbox"/> Medical Plan - ICS 206	<input checked="" type="checkbox"/> Air Operations– ICS 220														
9. Prepared by (Planning Section Chief) Al King		9. Approved by (Incident Commander Trainee) Craig Glazier													

ORGANIZATIONAL STRUCTURE CHART		9. Operations Section	
1. Incident Name Clark Fork Complex		Chiefs	Jeff Knudson (9/2)
			Joe Sampson (9/2)
2. Date 08/23/2015			
4. Operational Periods: DAY 0600-2000 Day PDT NIGHT 1800-0800 PDT			
5. Incident Commander and Staff		DIV A	Adam Carr (8/25)
Incident Commander	Diane Hutton (9/2) Craig Glazier (t) (9/2)	DIV Z	Harold Sutherland
Safety Officer	Chris Casey(9/2) , Dennis Talbert (9/2), George Johnson (t) (9/2)	DIV Y	Kevin Smith (9/2)
Information Officer	Bob MacGregor (9/2), Glenda Scott (9/2), John Head, Nan Stinson	DIV S	Eric Morgan (9/2)
6. Tribal and Agency Representatives			Cody Montgomery (t) (9/2)
Agency	Name	DIV W	John Olson (8/23)
USFS Agency Administrator	Christine Dawe		David Wilkins (8/27)
KNF Agency Rep	John Carlson	DIV T	Danny Lemeer (8/25)
IDL Area Manager	Tom Fleer	DIV X	Ed Lynn
READ	Lydia Allen (9/4)	Night Shift	Joel Sather
7. Planning Section			
Chief	Al King (9/2)		
Resources Unit	Jode Boyles Briggs (9/2)		
Status Check In	Mary Greenwood (8/31), Jennifer Burnham (9/4)		
Computer Technical	Chad Wulf (9/2)		
GIS Specialist	Ray Backstrom (9/2), Molly Purnell (9/4), Katie Miller 8/27		
Fire Behavior	Risa Lange-Navarro (9/2)		
GSAN	Jon Rieck (9/2)		
LTAN	Mary Taber (9/2), Diane Abendroth (t) (8/29)		
SITL	Vicki Stephens (8/25)	A. Air Operations Branch	
SOPL	Paul Swenson (t) (8/27)	Branch Director	
IMET	Scott Carpenter (9/4)	Air Attack Supervisor	
8. Logistics Section		Helibase Manager	
Chief	Russ Riebe (9/2), Bill Lauer (9/2)	Air Support Supervisor	Jeff Polack (8/23), Steve Croy (t) (9/4)
Ordering Manager	Mary Ann Hamilton (9/2)	Helicopter Coordinator	
Facilities	Adam Fisher (9/2)	Air Tanker Coordinator	
Equipment Manager	Jeremiah Greene (9/3)	10. Finance	
Communications Unit	Todd Orr (9/2), Jim Olivarez (9/2)	Chief	Joyce Anderson (9/2)
Medical Unit	Linda Barbee (9/2)	Deputy	
Base Camp Manager	Kyler McCarrell (9/2)	Time Unit	Janis Bouma (t) (9/2)
Supply Unit Leader	Dennis Cameron (9/2)	EQTR/PTRC	Carol Harwood (t) (8/29)
Cabinet Spike Logistics	Mike Justice (8/30)	Compensation/Claims	
Cabinet Spike Ordering	Perry Stebbins (8/25)	Cost Unit	Kevin O.Brien (9/3)
Prepared by: Jode Boyles Briggs RESL			



Clark Fork Complex Weather Forecast



FORECAST NO: 02 **NAME OF FIRE:** Clark Fork Complex
PREDICTION FOR: DAY SHIFT **UNIT:** Idaho Panhandle National Forest
SHIFT DATE: Sunday, August 23, 2015 **SIGNED:**

TIME AND DATE **Incident Meteorologist**
FORECAST ISSUED: 2030 Saturday, August 22, 2015 Scott J. Carpenter

WEATHER DISCUSSION:

Warming trend to continue again today with temperatures around 6 to 8 degrees warmer. Relative humidity values will fall into the 10-20% range. Winds will again be mainly terrain driven, similar to those observed on Saturday. The early morning inversion will gradually lift to around 5000 feet above sea level by 1100, and then further to around 7000 feet above sea level by 1400.

WEATHER FORECAST: Sunny. Low visibility due to smoke until 1100.

HIGH TEMPERATURES: 74°-86° (6°-8° warmer)
MINIMUM HUMIDITY: 10%-20% (5-10% drier)
20 FT WINDS: Terrain driven 5-8 mph with gusts to 13-18 mph after 1400.
RIDGETOP: South 4-6 mph til 1400, then Southwest and increasing to around 18 mph.
HAINES INDEX: 4 (Low)
CWR (>0.10 Inch): 0%
LAL: 1
MIXING HEIGHT: Increasing to around 5000 ft MSL around 1100, and 8000 ft MSL by 1400.

OUTLOOK

SUNDAY NIGHT: Mostly clear. Low visibility due to smoke after 2200. Low temperatures 48-57°F. RH recovery to 40-60%. 20 ft. Winds downslope/downvalley 4-8 mph, with ridgetop winds SW 15 mph. Inversion depth increasing to around 4000 feet MSL overnight.

MONDAY AND MONDAY NIGHT: Mostly clear skies. Low visibility due to smoke. High Temperatures 76-88°F. Minimum RH 14-22%. Low Temperatures 48-56°F. Maximum RH 50-65%. 20 ft. Winds SW 10-15 mph with gusts to 25 mph after 1100, with SW 20-25 mph at the ridgetops.

TUESDAY AND TUESDAY NIGHT: Mostly clear early, becoming partly cloudy after 1200. 10% Chance for a shower or isolated thunderstorms after 1200. High Temperatures 74-85°F. Minimum RH 15-24%. Low Temperatures 48-56°F. Maximum RH 55-70%. 20 ft. Winds SW 10-12 mph with gusts to 20 mph after 1100, with SW 15-20 mph at the ridgetops.

FIRE BEHAVIOR FORECAST

FORECAST NUMBER: #3	TYPE OF FIRE: Wildland Fires
FIRE NAME: Clark Fork Complex	OPERATIONAL PERIOD: Day 08/23/15
DATE ISSUED: 08/22/15	TIME ISSUED: 2030 hrs
UNIT: Sandpoint RD/Idaho Panhandle NF/ID & Cabinet RD/Kootenai NF/MT	SIGNED: Risa Lange-Navarro, FBAN <i>/s/ Risa Lange-Navarro</i>

INPUTS

WEATHER SUMMARY: Warmer temps, lower RHs, gusty winds
See Attached Spot Weather Forecast for further information.
North ID/Southern Mtns ERC **Observed** for 8/22/15 **78**, **Predicted** for 8/23/15 **79**
Kootenai NF ERC **Observed** for 8/22/15 **67** **Predicted** for 8/23/15 **65**

OUTPUTS

FIRE BEHAVIOR

GENERAL:

- Available fuels include moose moss, grass, some brush, Lodgepole pine, Whitebark pine, Subalpine fir, White fir, Douglas-fir, Western Larch, Ponderosa pine with Western Red Cedar and Western Hemlock at bottoms. Standing dead & snags with jackpots of heavy dead/downed and/or rotten fuels and snags are numerous. Marsh & valley bottoms burning readily and not a barrier. Fuel model 2, 8, 9 & 10. Fuels are extremely dry for this time of year and burning as if it was mid-September. Estimated 1000 hrs fuel moistures 10-13% & live fuel moisture 100%.
- Topography consists of steep, rocky drainages along Bull River & Clark Fork River with flat valley bottoms.
- Main fire behavior has surface fire (head, backing, flanking, creeping & smoldering), single/group torching trees and short-duration crown runs. Rollouts common with fire burning back upslope. Intensely burning heavy fuel jackpots is igniting tree moss/other ladder fuels torching out and spotting. Spotting distance potential up to 0.2 miles, expect further distance if sustained strong winds or thunderstorm winds occur. Snags & fire weakened trees falling down. Reburn potential is high.
- Watch for alignment of slope, winds and fuels for most active fire behavior.
- Burn period has been from 1000 to 2030 hrs with the main peak hours from 1930-2030 hrs for Bull River fires, 1400-1800 hrs for Whitetail and Scotchman fires.
- Probability of ignition about +/-80% on Unshaded South aspects with Fine Dead Fuel Moisture 3%.
- **Develop trigger points for your disengagement if fire behavior threatens your safety.**

SPECIFIC: Ensure lookouts are in a good safe spot where they can observe the fire activity/weather. Take hourly weather observations and bring them to Clark Fork ICP at end of shift.

Div A: Fire spread will be on all perimeters unchecked by suppression activities with head & backing fire predominately to the west. Expect jackpots of heavy dead/downed fuels to continue burning; single/group tree torching & spotting. Expect higher chances for short-duration crown runs with predicted lower RHs and higher temperatures. Rates of spread: head fire <18 ch/hr, backing <8 ch/hr; Flame Lengths: <12 ft. Spotting up to 0.2 mile. Watch for spots in areas where the smoke column has lain over yesterday and during the night.

Div S: Fire has moderated but will continue to spread to southwest/south with predominately backing fire. Expect jackpots of heavy dead/downed fuels to continue burning; single/group tree torching & spotting. Rates of spread: head fire <14 ch/hr, backing <6 ch/hr; Flame Lengths: <6 ft. Spotting up to 0.2 mile. Watch for spots in areas where the smoke column has lain over downslope during the evening hours.

Div T: Fire will continue to spread to the west/north/ east and southeast with head/backing/ flanking fire. Expect jackpots of heavy dead/downed fuels to continue burning; single/group tree torching & spotting. Expect higher chances for short-duration crown runs with predicted lower RHs and higher temperatures. Rollouts are very common with upslope runs following up. Rates of spread: head fire <15 ch/hr, backing <7 ch/hr; Flame Lengths: <16 ft. Spotting up to 0.2 mile. Watch for spots in areas where the smoke column has lain over yesterday and during the evening.

Div W: Fires will continue to spread down on both sides of the ridge between Whitetail Peak and Beaver Peak with backing fire and to the east toward the head of Blacktail Cr. Fire is hung up in a regeneration unit on the southwest side. Expect jackpots of heavy dead/downed fuels to continue burning; single/group tree torching & spotting. Expect higher chances for short-duration crown runs with predicted lower RHs and higher temperatures. Rates of spread: head fire <17 ch/hr, backing <3 ch/hr; Flame Lengths: <8 ft. Spotting up to ¼ mile. Watch for spots in areas where the smoke column has lain over to the northeast during the day and downslope during the night.

Div X: If fire is unchecked by suppression activities it will continue to spread on all perimeters with creeping & smoldering before early afternoon, then expect single tree torching and open flame until shadowed out in the evening. If fire behavior picks up with lower RHs and warmer temperatures expect fire to have rates of spread: head fire <18 ch/hr timber, backing <5 ch/hr, flame lengths <12 ft, and short range spotting. Watch for spots in areas where the smoke column has lain over during yesterday's thunderstorm and frontal passage.

Div Y/Z: Fires will continue to spread on all perimeters unchecked by suppression activities with head, flanking & backing fire with predominate spread to the south. Expect jackpots of heavy dead/downed fuels to continue burning; single/group tree torching & spotting. Expect higher chances for short-duration crown runs with predicted lower RHs and higher temperatures. Rates of spread: head fire <18 ch/hr, backing <3 ch/hr; Flame Lengths: <10 ft. Spotting up to 0.2 mile. Watch for spots in areas where the smoke column has lain over yesterday and downslope overnight.

Night Operations: See the above Division breakout above for information on your location throughout the night. Be aware of smoky conditions from the day's fire activity which may obscure your vantage points.

AIR OPERATIONS: Look for smoky conditions to mix out after 1000 hrs, gusty winds predicted in the afternoon.

SAFETY

Looking like today might be an active day with predicted hot & dry weather. So, I wonder which Watch-Out Situation that is? **Watch-Out Situation #14** Weather becoming hotter and drier. Fuels are dry, weather's conditions favorable and fires are actively burning. Have a fire weather/fire behavior knowledgeable person on your crew monitoring the weather and what the fire behavior does and when different weather conditions occur. And pass on your information to surrounding crews it's the friendly thing to do.

PLEASE GIVE FEEDBACK, it's greatly appreciated!

ASSIGNMENT LIST			1. Branch	2. Division/Group		
3. Incident Name			4. Operational Period			
Clark Fork Complex			Date: 08/23/2015		Time: 0600-2000	
5. Operations Personnel						
Operations Chief	Jeff Knudson, Joe Sampson		Division/Group Supervisor	Adam Carr (8/25)		
Branch Director			Air Support Group Supervisor	Jeff Polack 8/23, Steve Croy (t)		
6. Resources Assigned This Period						
Strike Team/Task Force/ Resource Designator	Last Shift	Leader	No. Pers.	Trans. Needed	Drop Off PT./Time	Pick Up PT./Time
STEN		Gilham, Krick (t)	2	N	DP 21 0700	Cabinet Spike 1930
LEO		JD Griffel	1	N	DP 21 0700	Cabinet Spike 1930
READ		Mark Mason	1	N	DP 21 0700	Cabinet Spike 1930
EMT		T Hightower/R. Myers	2	N	DP 21 0700	Cabinet Spike 1930
SAFETY	8/25	Pat Flanary	1	N	DP 21 0700	Cabinet Spike 1930
Geronimo IHC		Julius Hostetler	20	N	DP 21 0700	Cabinet Spike 1930
T4 ENG E-6605		Jason Snellman	4	N	DP 21 0700	Cabinet Spike 1930
T6 ENG Brush 104		Bledsoe	3	N	Hwy 56/200 0700	Cabinet Spike 1930
ENG T6 E-472		Matt Etienne	3	N	East Fork Road 0700	Cabinet Spike 1930
T6 ENG Trout Creek Brush #134		RURAL	2	N	DP 21 0700	Cabinet Spike 1930
Noxon WT-3		RURAL	1	N	DP 21 0700	Cabinet Spike 1930
Aqua Enterprises WT		M. McNew	1	N	DP 21 0700	Cabinet Spike 1930
Backwoods Bobcat		Levi Klaus	1	N	DP 21 0700	Cabinet Spike 1930
Jensen Excavator 1		Quentin Jensen	1	N	DP 21 0700	Cabinet Spike 1930
Jensen Excavator 2		Duane Jensen	1	N	DP 21 0700	Cabinet Spike 1930
Ibex Excavator						
Ibex Dozer						
Jensen Dozer		Bill Jensen	1	N	DP 21 0700	Cabinet Spike 1930
Jensen Skidgine		Joe Brodmarkle	1	N	DP 21 0700	Cabinet Spike 1930
7. Control Operations						
Continue improvement along Dry Creek and private property. Hold fire south of Dry Creek Road West of private property. Finish hose lay along dozer line and fuel breaks.						
8. Special Instructions						
Take hourly weather observations and bring to ICP at end of shift.						
Function	Frequency - RX	Frequency - TX	Tone	Channel	Comments	
Command	170.4125	165.9625	141.3	7	ICP TO LINE	
Command						
Tactical	168.0500	168.0500	141.3	1		
Air to Ground	170.1125	170.1125		15		
Prepared by (RESL) Jode Boyles Briggs		Approved by (PSC)		Date 08/22/2015		Time 2200

ASSIGNMENT LIST		1. Branch	2. Division/Group			
3. Incident Name		4. Operational Period				
Clark Fork Complex		Date: 08/23/2015		Time: 0600-2000		
5. Operations Personnel						
Operations Chief	Jeff Knudson, Joe Sampson		Division/Group Supervisor	Harold Sutherland		
Branch Director			Air Support Group Supervisor	Jeff Polack 8/23, Steve Croy (t)		
6. Resources Assigned This Period						
Strike Team/Task Force/ Resource Designator	Last Shift	Leader	No. Pers.	Trans. Needed	Drop Off PT./Time	Pick Up PT./Time
STEN (t)		Mark Wideman	1	N	East Fork Road 0700	Cabinet Spike 1930
HEQB		Todd Caudill	1	N	East Fork Road 0700	Cabinet Spike 1930
EMT		F. Sperlak, M. Littler	2	N	East Fork Road 0700	Cabinet Spike 1930
LEO		JD Griffel	1	N	East Fork Road 0700	Cabinet Spike 1930
T21A Mississippi C-1	9/4	Barker, Black (t)	20	N	East Fork Road 0700	Cabinet Spike 1930
D7 District Crew		Jim Chambers	5	N	East Fork Road 0700	Cabinet Spike 1930
T6 ENG Thompson Falls 141			3		East Fork Road 0700	Cabinet Spike 1930
ENG T6 E-44		Abe Becquart	3	N	East Fork Road 0700	Cabinet Spike 1930
ENG T6 Noxon E-114		RURAL	2	N	East Fork Road 0700	Cabinet Spike 1930
ENG T6 Bull Lake Engine #1260		Clyde Miller (RURAL)	3	N	East Fork Road 0700	Cabinet Spike 1930
DOZER E-28			1	N	East Fork Road 0700	Cabinet Spike 1930
Trout Creek WT-136		RURAL	1	N	East Fork Road 0700	Cabinet Spike 1930
Backwoods Excavator		Peter Hammond	1	N	East Fork Road 0700	Cabinet Spike 1930
Excavator E-1			1	N	East Fork Road 0700	Cabinet Spike 1930
Excavator E-20		Whitmarsh	2	N	East Fork Road 0700	Cabinet Spike 1930
7. Control Operations						
Hold established lines from A/Z Division break to West Pillick Road. Look for opportunities to establish use of Pillick Trail as holding line on East flank of Napoleon Fire.						
8. Special Instructions						
Take hourly weather observations and bring to ICP at end of shift.						
Function	Frequency - RX	Frequency - TX	Tone	Channel	Comments	
Command	170.4125	165.9625	141.3	7		
Command						
Tactical	168.2000	168.2000	141.3	2		
Air to Ground	170.1125	170.1125		15		
Prepared by (RESL) Jode Boyles Briggs		Approved by (PSC)		Date 08/22/2015	Time 2200	

ASSIGNMENT LIST			1. Branch		2. Division/Group		
3. Incident Name			4. Operational Period				
Clark Fork Complex			Date: 08/23/2015		Time: 0600-2000		
5. Operations Personnel							
Operations Chief		Jeff Knudson, Joe Sampson		Division/Group Supervisor		Kevin Smith	
Branch Director				Air Support Group Supervisor		Jeff Polack 8/23, Steve Croy (t)	
6. Resources Assigned This Period							
Strike Team/Task Force/ Resource Designator	Last Shift	Leader	No. Pers.	Trans. Needed	Drop Off PT./Time	Pick Up PT./Time	
Red Medic E 26	9/3	Nielsen	1	N	Hwy 56/200 0700	ICP 2000	
7. Control Operations							
<p>Identify structure protection needs along East Fork Road, Bull River Road, and Highway 20 corridor. Work with Sheriff Department on notification plan in the event of evacuation. Monitor movement of Government Fire.</p>							
8. Special Instructions							
<p>Assess protection needs for Bull River Campground. Take hourly weather observations and bring to ICP at end of shift.</p>							
Function	Frequency - RX	Frequency - TX	Tone	Channel	Comments		
Command	170.4125	165.9625	141.3	7			
Command							
Tactical	168.6000	168.6000	141.3	3			
Air to Ground	170.1125	170.1125		15			
Prepared by (RESL)		Approved by (PSC)			Date		Time
Jode Boyles Briggs					08/22/2015		2200

ASSIGNMENT LIST		1. Branch	2. Division/Group			
			S			
3. Incident Name		4. Operational Period				
Clark Fork Complex		Date: 08/23/2015	Time: 0600-2000			
5. Operations Personnel						
Operations Chief	Jeff Knudson, Joe Sampson		Division/Group Supervisor	Eric Morgan, Cody Montgomery (t)		
Branch Director			Air Support Group Supervisor	Jeff Polack 8/23, Steve Croy (t)		
6. Resources Assigned This Period						
Strike Team/Task Force/ Resource Designator	Last Shift	Leader	No. Pers.	Trans. Needed	Drop Off PT./Time	Pick Up PT./Time
FOBS	8/29	Ohlwieler	2	N	Clark Fork 0700	
Skidder Fousts E-37	9/3		1		Clark Fork 0700	
Skidder Fousts E-38	9/3		1		Clark Fork 0700	
7. Control Operations						
Complete heavy equipment line from Cascade Creek to Blue Creek. Monitor fire growth.						
8. Special Instructions						
Take hourly weather observations and bring to ICP at end of shift.						
Function						
Command	Frequency - RX	Frequency - TX	Tone	Channel	Comments	
Command	170.4125	165.9625	141.3	7		
Tactical	168.6000	168.6000	141.3	3		
Air to Ground	162.6125	162.6125		14		
Prepared by (RESL)		Approved by (PSC)		Date	Time	
Jode Boyles Briggs				08/22/2015	2200	

ASSIGNMENT LIST			1. Branch	2. Division/Group			
3. Incident Name			4. Operational Period				
Clark Fork Complex			Date: 08/23/2015		Time: 0600-2000		
5. Operations Personnel							
Operations Chief		Jeff Knudson, Joe Sampson		Division/Group Supervisor		John Olson 8/23, David Wilkins (t) 8/27	
Branch Director				Air Support Group Supervisor		Jeff Polack, Steve Croy (t)	
6. Resources Assigned This Period							
Strike Team/Task Force/ Resource Designator	Last Shift	Leader	No. Pers.	Trans. Needed	Drop Off PT./Time	Pick Up PT./Time	
TFLD O-1.7	8/27	Reser	1	N	DP 1 0700	ICP 1930	
HEQB		Bill Case, Dennis Gillmer (t)	2	N	DP 1 0700	ICP 1930	
TFLD		Wayne Pesch, Bryce Barth (t)	1	N	DP 1 0700	ICP 1930	
Idaho Panhandle IHC C-5	9/1	Nipp	21	N	DP 1 0700	ICP 1930	
IA Module 61		King	3	N	DP 1 0700	ICP 1930	
DOZER E-1 Wink 650K Dozer		Metzger	2	N	DP 1 0700	ICP 1930	
ENG T6 E-661		Loveless	5	N	DP 1 0700	ICP 1930	
Dozer Cat D4 E-6		Akre	2	N	DP 1 0700	ICP 1930	
Water Tender E-10	9/1	Gieser	2	N	DP 1 0700	ICP 1930	
Water Tender E-24		Swisher	1	N	DP 1 0700	ICP 1930	
Wink Excavator E-8		Winkelseth	2	N	DP 1 0700	ICP 1930	
Feller Buncher E-32		Evans	1	N	DP 1 0700	ICP 1930	
Feller Buncher E-34	9/5	Schnabl	2	N	DP 1 0700	ICP 1930	
Feller-Buncher 455 EXL E-5		Zielinski	2	N	DP 1 0700	ICP 1930	
T2 Skidgine E-12	9/1	Alderdice	1	N	DP 1 0700	ICP 1930	
T2 Skidgine E-13	9/1	Pittman	2	N	DP 1 0700	ICP 1930	
7. Control Operations							
Utilize air resources and equipment to improve line along ridge from 3092 to DP 3.							
8. Special Instructions							
Assess protection measures implemented in Dry Creek Seed Orchard. Take hourly weather observations and bring to ICP at end of shift.							
Function	Frequency - RX	Frequency - TX	Tone	Channel	Comments		
Command	170.4125	165.9625	141.3	7			
Command							
Tactical	166.7250	166.7250	141.3	4			
Air to Ground	162.6125	162.6125		14			
Prepared by (RESL) Jode Boyles Briggs		Approved by (PSC)		Date 08/22/2015		Time 2200	

ASSIGNMENT LIST			1. Branch		2. Division/Group		
3. Incident Name			4. Operational Period				
Clark Fork Complex			Date: 08/23/2015		Time: 0600-2000		
5. Operations Personnel							
Operations Chief		Jeff Knudson, Joe Sampson		Division/Group Supervisor		Danny Lemeer 8/25	
Branch Director				Air Support Group Supervisor		Jeff Polack 8/23, Steve Croy (t)	
6. Resources Assigned This Period							
Strike Team/Task Force/ Resource Designator	Last Shift	Leader	No. Pers.	Trans. Needed	Drop Off PT./Time	Pick Up PT./Time	
T6 ENG Castle Mountain	9/3	Brandon Bakken	3	N	DP 20 0700	Cabinet Spike 1930	
7. Control Operations							
<p>Work with Sheriff Department on notification plan in the event of evacuation and recommend public safety measures needed in Ross Creek Cedars and Bad Medicine Campground</p> <p>Monitor Sawtooth Fire growth.</p>							
8. Special Instructions							
<p>Assess protection needs for Bad Medicine, Spar Lake, and Door Skeels.</p> <p>Minimize suppression impacts to lower Ross Creek RNA, Spar Springs, and Ross Creek Wild and Scenic River Corridor.</p> <p>Take hourly weather observations and bring to ICP at end of shift.</p>							
Function	Frequency - RX	Frequency - TX	Tone	Channel	Comments		
Command	170.4125	165.9625	141.3	7			
Command							
Tactical	166.7750	166.7750	141.3	5			
Air to Ground	170.1125	170.1125	15				
Prepared by (RESL)		Approved by (PSC)		Date		Time	
Jode Boyles Briggs				08/22/2015		2200	

ASSIGNMENT LIST			1. Branch		2. Division/Group		
					X		
3. Incident Name			4. Operational Period				
Clark Fork Complex			Date: 08/23/2015		Time: 1800-0800		
5. Operations Personnel							
Operations Chief		Jeff Knudson, Joe Sampson		Division/Group Supervisor		Ed Lynn	
Branch Director				Air Support Group Supervisor		Jeff Polack 8/23, Steve Croy (t)	
6. Resources Assigned This Period							
Strike Team/Task Force/ Resource Designator	Last Shift	Leader	No. Pers.	Trans. Needed	Drop Off PT./Time	Pick Up PT./Time	
Smokejumpers		Newell	8	Y	DP Marten Fire	DP	
7. Control Operations							
Perimeter control of Marten Fire.							
8. Special Instructions							
Assess need for replacement of smokejumpers in four days.							
Function	Frequency - RX	Frequency - TX	Tone	Channel	Comments		
Command	170.4125	165.9625	141.3	7			
Command							
Tactical	166.7750	166.7750	141.3	5			
Air to Ground	162.6125	162.6125					
Prepared by (RESL)		Approved by (PSC)			Date		Time
Jode Boyles Briggs					08/22/2015		2200

ASSIGNMENT LIST			1. Branch		2. Division/Group		
					NS		
3. Incident Name			4. Operational Period				
Clark Fork Complex			Date: 08/23/2015		Time: 1800-0800		
5. Operations Personnel							
Operations Chief		Jeff Knudson, Joe Sampson		Division/Group Supervisor		Joel Sather (t)	
Branch Director				Air Support Group Supervisor		N/A	
6. Resources Assigned This Period							
Strike Team/Task Force/ Resource Designator	Last Shift	Leader	No. Pers.	Trans. Needed	Drop Off PT./Time	Pick Up PT./Time	
T6 ENG E-1260 Bull Lake VFW		Jeff Drake	3	N	Highway 56/200 1900	Cabinet Spike 0700	
T6 ENG Noxon E-114			2	N	Highway 56/200 1900	Cabinet Spike 0700	
T6 ENG Bishop		Will Hughes	3	N	Highway 56/200 1900	Cabinet Spike 0700	
WT-3, WT-6		Unstaffed /Staged					
7. Control Operations							
<p>Patrol fires along Highway 56 and Scotchman Fire. As necessary notify residents of increased fire behavior approaching their homes.</p>							
8. Special Instructions							
<p>Take hourly weather observations and bring to ICP at end of shift.</p>							
Function	Frequency - RX	Frequency - TX	Tone	Channel	Comments		
Command	170.4125	165.9625	141.3	7			
Command							
Tactical	166.7750	166.7750	141.3	5			
Air to Ground							
Prepared by (RESL)		Approved by (PSC)		Date		Time	
Jode Boyles Briggs				08/22/2015		2200	

AIR OPERATIONS SUMMARY

Prepared By: Steve Croy – ASGS(t)

08/22/2015

Prepared Time: 19:30

1. INCIDENT NAME: Clark Fork Complex	2. OPS PERIOD DATE: 08/23/2015	START TIME: 0600	END TIME: 2000	SUNRISE:MT./ID. 0646 / 0552	SUNSET:MT./ID. 2045 / 1948
3. REMARKS (Safety Notes, Hazards, Air Operations Special Equipment): - Communicate known flight hazards to your pilot: wires, towers, snags, other aircraft. - Aircraft requests will be made thru Line Operations. - AFTER Aug 15: Fed aircraft will cease tactical operations after sundown, flight after sundown shall be ferry back to base only. - Smoke & limited visibility expected in the morning.			4. READY ALERT AIRCRAFT MEDEVAC – Contact Clark Fork Complex ICP Communication with Request.		5. TFR's: 5/6628 A/A freq 124.650, Surface to 10,000' MSL

6. PERSONNEL	NAME	PHONE #	7. FREQUENCIES	AM	FM	8. FIXED-WING- Type/ Make-Model/ N#/ Base										
ASGS	Jeff Polack	###	Idaho Air / Air	124.650		AIRTANKERS: Request Thru Operations										
ASGS (t)	Steve Croy	540-230-2568 leave msg	Idaho Air/Ground		162.6125	SEATS: Request thru Operations										
			Montana Air to Air	132.6750		ATGS AIRCRAFT: Request Thru Operations										
			Montana Air/Ground		170.1125											
			Air Guard		168.6250 TX tone 110.9	Helispots & Dipsites:										
NOTE: Aircraft requests are placed through Coeur d'Alene Dispatch. Plan ahead for timely arrival of aircraft.						<table style="width: 100%; border-collapse: collapse;"> <thead> <tr> <th style="width: 15%;">Name</th> <th style="width: 15%;">Lat</th> <th style="width: 15%;">Long</th> <th style="width: 15%;">Elev</th> <th style="width: 40%;">Comments</th> </tr> </thead> <tbody> <tr> <td>Heron Helispot</td> <td>48 04.67'</td> <td>115 58.23'</td> <td>2300'</td> <td>mowed pasture, south MT200, west of staging</td> </tr> </tbody> </table>	Name	Lat	Long	Elev	Comments	Heron Helispot	48 04.67'	115 58.23'	2300'	mowed pasture, south MT200, west of staging
						Name	Lat	Long	Elev	Comments						
Heron Helispot	48 04.67'	115 58.23'	2300'	mowed pasture, south MT200, west of staging												

FAA N#	T Y	MAKE/ MODEL	BASE	MGR.	AVAIL	REMARKS	FAA N#	T Y	MAKE/ MODEL	BASE	MGR.	AVAIL	REMARKS
N414 <i>KNF IA</i>	1	Kmax	Libby S59	Gray	0800	Gallatin EXU	4CH	1	BV-107	Shoshone	###	0800	Ops will place order as needed.
N793HT <i>KNF IA</i>	1	CH-54 SkyCrane	Libby S59	McQueary	0800	Cedar City EXU	9CH	1	BV-107	Shoshone	###	0800	Ops will place order as needed.
N122Z <i>KNF IA</i>	2	Bell 212HP	Libby S59	Benfatti +10	0800	Gallatin Rappel EXU							
N44MA <i>KNF IA</i>	3	Bell 407	Libby S59	Blaz+ 2	0800	Libby EXU							

NOTE:

10. TASK/ MISSION/ ASSIGNMENT (Type/ function includes: Air Tactical, Retardant, Recon, Personnel Transport, Bucket Operations, SAR, etc.)													
Missions: Priority cargo Div X, OPS, FBAN/LTAN recons; & bucket work as requested; Support Zone I.A. & fire logistics													

SAFETY MESSAGE

Safety Briefing EVERY DAY for Every Firefighter on the Fireline

What Benefit ?

What Risk ?

GRAVITY

There numerous adverse effects that come into play in the fire environment due to gravity.

ROLLING DEBRIS: Much of the work that is being completed on this incident is taking place at or near the bottom of the slope as the fire backs down. When the duff layer that was keeping rocks in place burns, gravity lets the rock roll down the slope and often times it is silent until it comes to rest at the toe of the slope. The same is true when logs finally burn through and are unattached to anything holding them in place. Falling snags or green trees will dislodge rocks or logs as well. Limbs on burning trees will fall without a sound. The slopes on this incident are extremely steep so anything that rolls will build up a good head of steam by the time it reaches the flats. Keep your head up and your ears open. Work in pairs if possible and call out when you see or hear something. Thick understory or forest canopy upslope will hide the sights and sounds of something rolling downslope. Pay attention and keep your head up.

RETARDANT AND WATER DELIVERY: Gravity is a good thing when utilizing water or retardant on the fire line but not when resources on the ground are in the way of the delivery. Again, pay attention, keep your head up, and make sure you are clear of the drop area

Medical Incident Report

FOR ALL MEDICAL EMERGENCIES: IDENTIFY ON SCENE INCIDENT COMMANDER BY NAME AND POSITION AND ANNOUNCE "MEDICAL EMERGENCY" TO INITIATE RESPONSE FROM IMT COMMUNICATIONS/DISPATCH.

Use items one through nine to communicate situation to communications/dispatch.

1. CONTACT COMMUNICATIONS/DISPATCH

Ex: "Communications, Div. Alpha. Stand-by for Priority Medical Incident Report." (If life threatening request designated frequency be cleared for emergency traffic.)

2. INCIDENT STATUS: Provide incident summary and command structure.

Nature of Injury/Illness		<i>Describe the injury (Ex: Broken leg with bleeding)</i>
Incident Name		<i>Geographic Name + "Medical" (Ex: Trout Meadow Medical)</i>
Incident Commander		<i>Name of IC</i>
Patient Care		<i>Name of Care Provider (Ex: EMT Smith)</i>

3. INITIAL PATIENT ASSESSMENT: Complete this section for each patient. This is only a brief, initial assessment. Provide additional patient info after completing this 9 Line Report.

Number of Patients:	Male / Female	Age:	Weight:
Conscious? <input type="checkbox"/> YES <input type="checkbox"/> NO = MEDEVAC!			
Breathing? <input type="checkbox"/> YES <input type="checkbox"/> NO = MEDEVAC!			
Mechanism of Injury: <i>What caused the injury?</i>			
Lat/Long (Datum WGS84) <i>Ex: N 40° 42.45' x W 123° 03.24'</i>			

4. SEVERITY OF EMERGENCY, TRANSPORT PRIORITY

SEVERITY	TRANSPORT PRIORITY
<input type="checkbox"/> URGENT-RED Life threatening injury or illness. <i>Ex: Unconscious, difficulty breathing, bleeding severely, 2° – 3° burns more than 4 palm sizes, heat stroke, disoriented.</i>	Ambulance or MEDEVAC helicopter. Evacuation need is IMMEDIATE.
<input type="checkbox"/> PRIORITY-YELLOW Serious Injury or illness. <i>Ex: Significant trauma, not able to walk, 2° – 3° burns not more than 1-2 palm sizes.</i>	Ambulance or consider air transport if at remote location. Evacuation may be DELAYED.
<input type="checkbox"/> ROUTINE-GREEN Not a life threatening injury or illness. <i>Ex: Sprains, strains, minor heat-related illness.</i>	Non-Emergency. Evacuation considered Routine of Convenience.

5. TRANSPORT PLAN:

Air Transport: (Agency Aircraft Preferred)

<input type="checkbox"/> Helispot	<input type="checkbox"/> Short-haul/Hoist	<input type="checkbox"/> Life Flight	<input type="checkbox"/> Other
Ground Transport:			
<input type="checkbox"/> Self-Extract	<input type="checkbox"/> Carry-Out	<input type="checkbox"/> Ambulance	<input type="checkbox"/> Other

6. ADDITIONAL RESOURCE/EQUIPMENT NEEDS:

<input type="checkbox"/> Paramedic/EMT(s)	<input type="checkbox"/> Crew(s)	<input type="checkbox"/> SKED/Backboard/C-Collar
<input type="checkbox"/> Burn Sheet(s)	<input type="checkbox"/> Oxygen	<input type="checkbox"/> Trauma Bag
<input type="checkbox"/> Medication(s)	<input type="checkbox"/> IV/Fluid(s)	<input type="checkbox"/> Cardiac Monitor/AED
<input type="checkbox"/> Other (i.e. splints, rope rescue, wheeled litter)		

7. COMMUNICATIONS:

Function	Channel Name/Number	Receive (Rx)	Tone/NAC *	Transmit (Tx)	Tone/NAC *
<i>Ex: Command</i>	<i>Forest Rpt, Ch. 2</i>	<i>168.3250</i>	<i>110.9</i>	<i>171.4325</i>	<i>110.9</i>
COMMAND					
AIR-TO-GRND					
TACTICAL					

*(NAC for digital radio system)

8. EVACUATION LOCATION:

Lat/Long (Datum WGS84) <i>EX: N 40 42.45' x W 123 03.24'</i>	
Patient's ETA to Evacuation Location:	
Helispot/Extraction Size and Hazards:	

9. CONTINGENCY:

Considerations: <i>If primary options fail, what actions can be implemented in conjunction with primary evacuation method? Be thinking ahead...</i>	REMEMBER: Confirm ETA's of resources ordered Act according to your level of training Be Alert. Keep Calm. Think Clearly. Act Decisively.
--	--

MEDICAL PLAN (ICS 206 WF)

1. Incident/Project Name		2. Operational Period			
Clark Fork Complex		Date/Time 08-23-2015		0600-2200	
3. Ambulance Services					
Name	Complete Address	Phone & EMS Frequency	Advanced Life Support (ALS) Yes No		
Noxon Ambulance Service	Noxon, Montana	Ordered through CDC, call ICP on Command 1 for dispatch.	NO		
Clark Fork Ambulance	Clark Fork, ID	208-266-1574	YES		
Libby Volunteer Ambulance	Libby, Montana	406-293-4112	YES		
Bonner Emergency EMS	Sandpoint, Idaho	208-255-2194	YES		
4. Air Ambulance Services					
Name	Phone	Type of Aircraft & Capability			
Life Flight Network	800-232-0911	Rotor and fixed wing , ALS with night capabilities			
Alert Air Rescue	406-752-9797	Helicopter, ALS with night capabilities			
Northwest Medstar	800-5723201	Rotor and Fixed Wing, ALS with night capabilities			
5. Hospitals					
Name Complete Address	GPS Datum – WGS 84 Coordinate Standard Degrees Decimal Minutes DD° MM.MMM' N - Lat DD° MM.MMM' W - Long	Travel Time Air Gnd	Phone	Helipad Yes No	Level of Care Facility
Bonner General, 520 N 3 rd Ave, Sandpoint, ID 83864	Lat:	15 min 45-60 min	208-263-1441	<input checked="" type="checkbox"/> <input type="checkbox"/>	Critical Access
	Long:				
Kootenai Medical 203 Lincoln Way, Coeur d' Alene.83814	Lat:	20 min 60-90 min	208-666-2000	<input checked="" type="checkbox"/> <input type="checkbox"/>	Level 2 Trauma
	Long:				
Kalispell Regional Hospital, 310 Sunny View Lane, Kalispell, MT	Lat:		406-752-5111	<input checked="" type="checkbox"/> <input type="checkbox"/>	Trauma Level 3
	Long:				
6. Division Branch Group		Area Location Capability			
ICP / Medical Unit Sanders County Search and Rescue ICP- 406-847-2193		EMS Responders & Capability:		MEDL and Paramedic at night.	
		Equipment Available on Scene:		First Aid and Basic Life Support	
		Medical Emergency Channel:		Command 1	
		Ambulance to Scene		45 minutes	
		Air:		30 min	
		Approved Helispot:		yes	
		Long:		116 01.58 W	
DIV A		EMS Responders & Capability:		2 EMTs	
		Equipment Available on Scene:		Basic Life Support	
		Medical Emergency Channel:		Command 1	
		ETA for Ambulance to Scene:			
		Air:		45 min	
		Approved Helispot:			
		Long:		115 51.687 W	

MEDICAL PLAN (ICS 206 WF)

DIV Z	EMS Responders & Capability:	2 EMTs Paramedic (Red Medic) response upon DIV request.
	Equipment Available on Scene:	Basic Life Support
	Medical Emergency Channel:	Command 1
	ETA for Ambulance to Scene:	
	Air:	45 min
	Lat:	48 11.93 3 N
	Long:	115 51.687 W
DIV Y	EMS Responders & Capability:	Paramedic (Red Medic)
	Equipment Available on Scene:	
	Medical Emergency Channel:	Command 1
	ETA for Ambulance to Scene:	
	Air:	
	Lat:	
	Long:	

DIV T	EMS Responders & Capability:	Paramedic (Red Medic) available to respond upon Division request.
	Equipment Available on Scene:	
	Medical Emergency Channel:	Command 1
	ETA for Ambulance to Scene:	
	Air:	
	Lat:	
Long:		

DIV X	EMS Responders & Capability:	Smoke Jumpers on scene
	Equipment Available on Scene:	
	Medical Emergency Channel:	Command 1
	ETA for Ambulance to Scene:	
	Air:	
	Lat:	
Long:		

DIV NS	EMS Responders & Capability:	Medical will respond from ICP as needed at night
	Equipment Available on Scene:	
	Medical Emergency Channel:	Command 1
	ETA for Ambulance to Scene:	
	Air:	
	Lat:	
Long:		

7. Name & Location		Area Location Capability		
DIV S	EMS Responders & Capability:	Paramedic (Red Medic) available to respond upon DIV request.		
	Equipment Available on Scene:			
	Medical Emergency Channel:	Command 1		
	ETA for Ambulance to Scene:			
	Air:			
	Approved Helispot :			
	Lat:			
Long:				
DIV W	EMS Responders & Capability	1 EMT		
	Equipment Available on Scene:			
	Medical Emergency Channel:	Command 1		
	ETA for Ambulance to Scene:			
	Air:			
	Approved Helispot:			
	Lat:			
Long:				
8. Prepared By: MEDL		9. Date/Time	10. Reviewed By (Safety Officer)	11. Date/Time
Linda Barbee		08/22/2015 2000	Chris Casey	08/22/15 @ 2000 hrs.

MEDICAL PLAN (ICS 206 WF)

Clark Fork Complex

Incident within an Incident Emergency Action Plan

In the case of a serious accident requiring patient transport to a medical facility:

- The closest ranking Operations Leader (i.e. Division Supervisor) at the accident scene will take charge and be the Point of Contact (POC).
- Mobilize the closest paramedic/EMT to the scene by ground or air to treat the patient(s) and package for transport.
- Use the Medical Plan ICS 206WF and Incident Medical Report Form (Nine Line) in the IAP to collect and document patient information, communicate with ICP Communications and plan for two types of transport (ground and air).
- Operations Section Chief (Line or Plans) will direct medical emergency response from ICP or on-scene.
- Upon notification of a serious accident, the Incident Commander, Safety Officer, Operations Section Chief (Plans), Air Support Group Supervisor and Medical Unit Leader will report to the ICP Communications.
- Incident Communications will notify Coeur d' Alene Interagency Dispatch Center (CDC) (208-772-3283) and coordinate patient transportation.
- All other Command and General Staff will go to ICP communications to monitor the situation and be available if needed to assist.
- Incident Radio traffic will be monitored 24 hours a day at the Clark Fork ICP.

Approved by: _____ Incident Commander

Date: _____

C. R. J.
8/20/15

INCIDENT RADIO COMMUNICATIONS PLAN	1. Incident Name	2. Date/ Time Prepared	3. Operational Period Date/Time
---	------------------	------------------------	---------------------------------

4. Basic Radio Channel Utilization
Mode: W=Wideband Analog, N=Narrowband Analog, D=Digital, M=Mixed

Channel	Function	RX:	Frequency	Tone	Mode	Assignment	Remarks
1		TX:					
2		TX:					
3		TX:					
4		TX:					
5		TX:					
6		TX:					
7		TX:					
8		TX:					
9		TX:					
10		TX:					
11		TX:					
12		TX:					
13		TX:					
14		TX:					
15		TX:					
16		TX:					

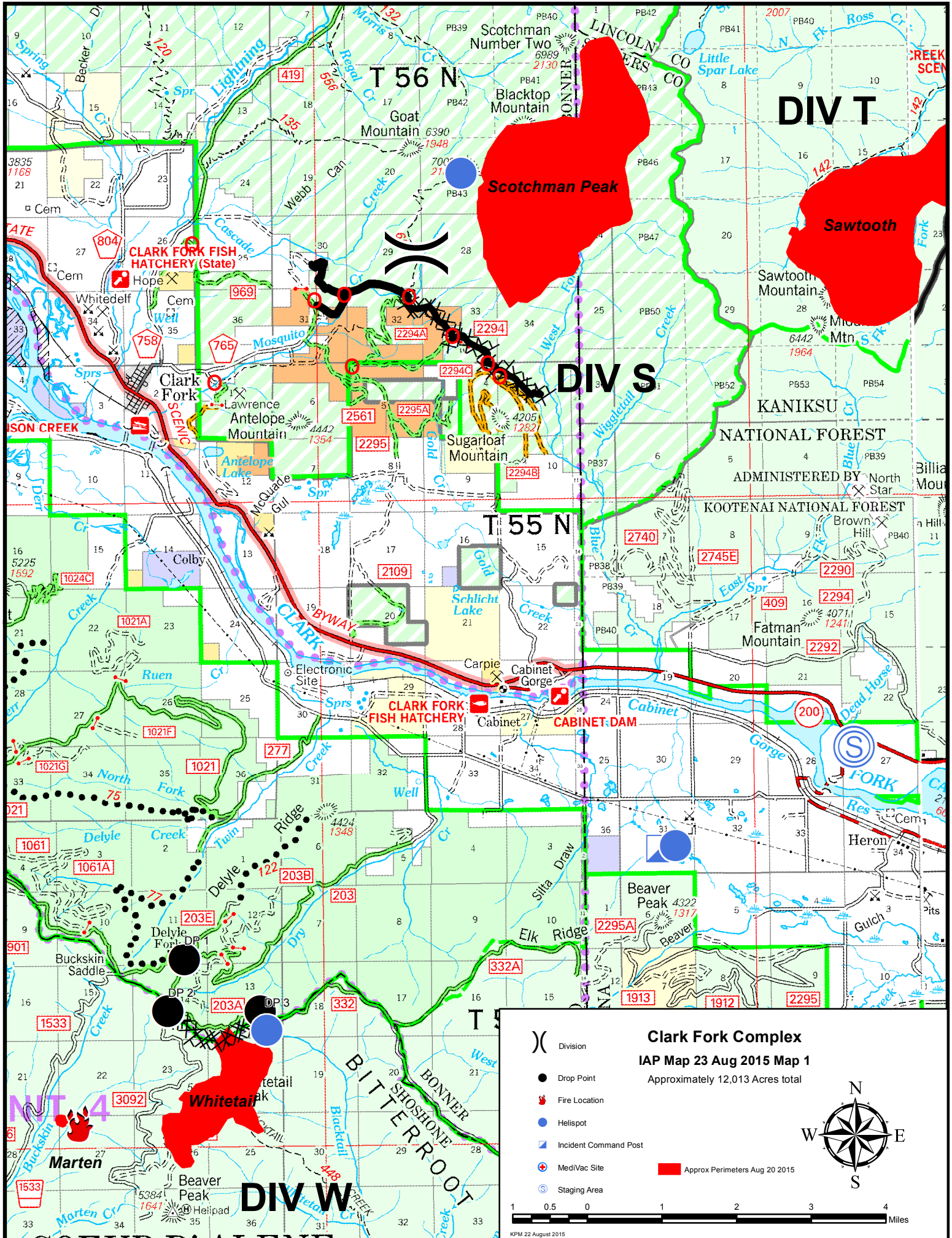
5. Prepared by (Communications Unit)

CLARK FORK COMPLEX PHONE LIST

Name	Title	Office	Cell
Christine Dawe	Clark Fork Agency Administrator		(406) 370-8865
John Carlson	KNF Agency Representative	(406) 837-7634	
Celeste Hancock	Dispatch Center Manager C'dA	(208) 762-6904	(208) 659-1346
Heather Good	Incident Business Manager IPNF	(208) 983-4096	(208) 451-4207
Terri Tangen	Incident Business Manager KNF		
Mike Behrens	IPNF Fire Staff	(208) 659-1392	(208) 659-1392
Chad Hudson	Couer d'Alene RD		(208) 661-9119
Tom Fleer	IDL- Area Manager Pend Orielle	(208) 265-5104	(208) 610-3744
Shawn Hicks	IDL Fire Warden Pend Orielle	(208) 263-5104	(208) 304-4218
Sam Gibbons	Couer d'Alene RD DFMO	(208) 660-5547	
Erick Walker	Sand Point District Ranger		(208) 290-6698
Carolyn Blatz	KNF Helibase	(406) 283-7865	
Lydia Allen	Resource Advisor		(208) 215-9701

CLARK FORK COMPLEX ICP @ AMBER BEAR INN

FAX:	(406) 847-9971	
COMMO:	(406) 847-9976	
FINANCE	(406) 847-8627	Finance phone may be answered by Amber Bear Inn staff, ask for Finance
ORDERING:	(406) 847-9975	
PIO:	(406) 847-9974	
PLANS:	(406) 847-9972	
SAFETY/OPS:	(406) 847-9973	

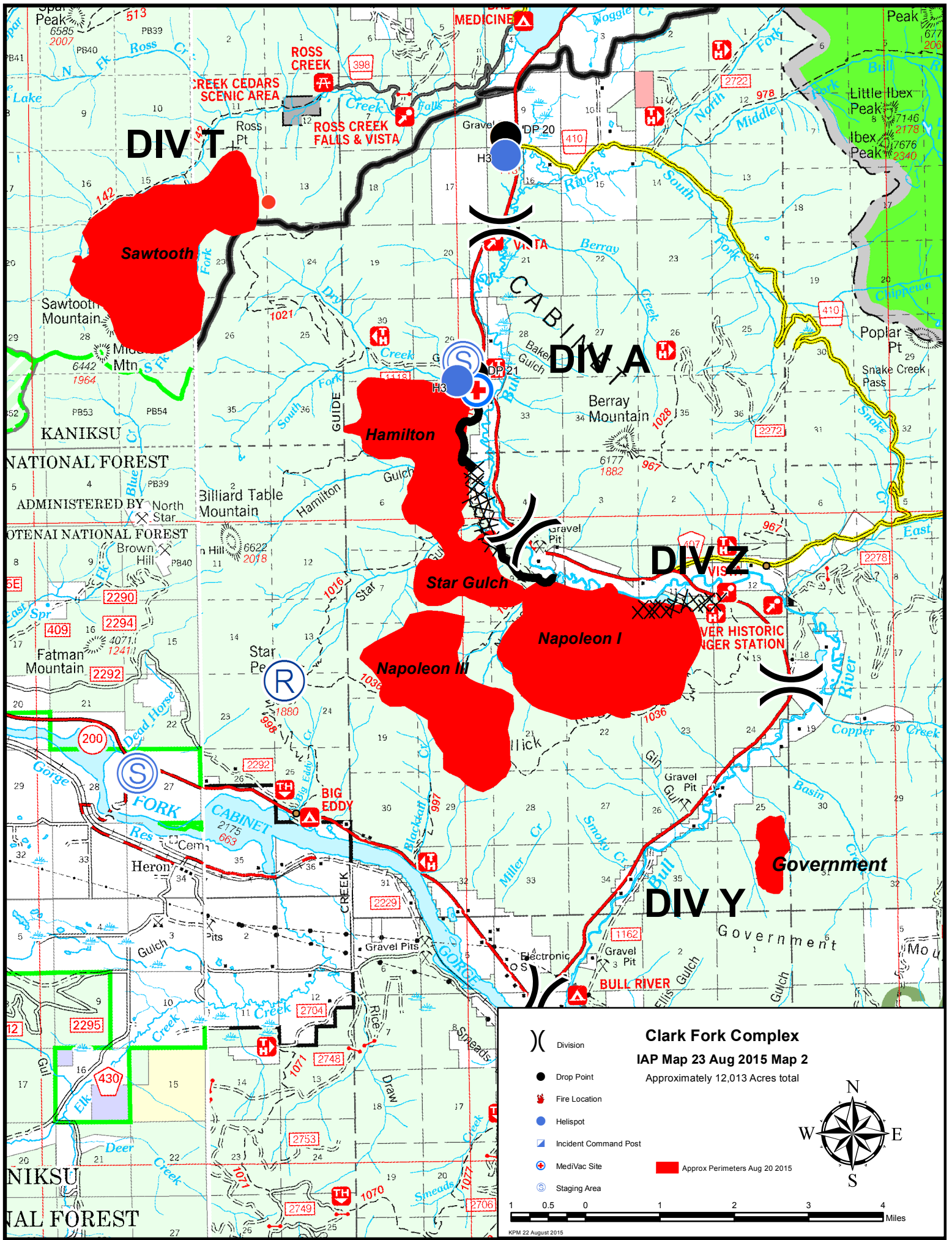


Clark Fork Complex
IAP Map 23 Aug 2015 Map 1
 Approximately 12,013 Acres total

- () Division
- Drop Point
- 🔥 Fire Location
- Helispot
- 🚒 Incident Command Post
- ⚕️ MediVac Site
- Ⓞ Staging Area
- 🔴 Approx Perimeters Aug 20 2015

1 0.5 0 1 2 3 4 Miles

KPM 22 August 2015



ACTIVITY LOG (ICS 214)

1. Incident Name:	2. Operational Period: Date From: _____ Date To: _____ Time From: _____ Time To: _____
--------------------------	--

3. Name:	4. ICS Position:	5. Home Agency (and Unit):
-----------------	-------------------------	-----------------------------------

6. Resources Assigned:		
Name	ICS Position	Home Agency (and Unit)

7. Activity Log:

Date/Time	Notable Activities

8. Prepared by: Name: _____	Position/Title: _____	Signature: _____
------------------------------------	-----------------------	------------------

ICS 214, Page 1	Date/Time: _____
------------------------	------------------

