



Clark Fork Complex Incident Action Plan Monday, August 24, 2015 Day 0600–2000 PDT Night 1800–0800 PDT

ID-IPF-000923
P1J10X (0104)



SMOKE EXPOSURE

Exposure to smoke during fire operations can be a significant safety concern. Research has shown that smoke exposure on prescribed fires, especially in the holding and ignition positions, often exceeds that on wildfires. There are many precautions that can be taken to reduce personnel from exposure to smoke.

Planning - Smoke exposure needs to be considered when planning suppression tactics and prescribed fires. Simple actions can mitigate smoke exposures, such as:

- Altering line locations can have a significant impact on smoke exposure.
- Placing firelines in areas of lighter fuels or moving lines to roads or other barriers that will require less holding, patrol and mop-up will significantly reduce the smoke exposure to personnel.
- Use flanking attack as opposed to head attack (where appropriate) in heavy smoke situations.
- Check fire behavior forecasts for smoke and inversion potential.
- In heavy smoke, give up acres to gain control.

Implementation - Many techniques can help reduce the exposure of personnel to heavy smoke, such as:

- Rotating people out of the heaviest smoke area may be the single most effective method.
- Locate camps and incident command posts in areas that are not prone to inversions.
- Minimize snag falling, consistent with safety concerns, to avoid putting heavy fuels on the ground that will require mop-up.
- Changing firing patterns and pre-burning (black lining) during less severe conditions can greatly reduce exposure to smoke.
- The use of retardant, foam or sprinklers can also significantly reduce the workload and exposure time for holding crews.

INCIDENT OBJECTIVES	1. Incident Name Clark Fork Complex	2. Date 08/23/15	3. Time 1800												
4. Operational Period: 08/24/15 Day: 0600-2000 PDT Night: 1800-0800 PDT															
<p>5. General Control Objectives for the Incident (include alternatives)</p> <p>Strategy Utilize a combination of confine/contain and point protection strategies to protect identified Values at Risk, given resources available.</p> <p>Incident Objectives</p> <ol style="list-style-type: none"> 1. Firefighter, aviation and public safety is the highest priority. Use sound risk management and hazard mitigation processes that weigh probability of success against human life exposure for EVERY management action taken. 2. Minimize threats/loss to all identified values including private property; public and private improvements; electronic and communication facilities; T&E species; watershed, riparian and wilderness areas; archeological and historical sites. 3. Monitor current area, road and trail closures and provide recommendations to modify closures as warranted to ensure public safety. 4. Create and implement a Long Term Plan in coordination with the Forest(s) that protects Values at Risk, emphasizes firefighter and public safety and is commensurate with available resources. 5. Provide accurate and timely information to agencies, stakeholders and the public, through meetings, news releases, website updates, reports and personal contacts. 6. Keep costs commensurate with resource objectives through regular and ongoing cost analyses. 7. Coordinate initial attack response within the TFR area on the Idaho Panhandle and Kootenai National Forests. <p>Incident Requirements</p> <ol style="list-style-type: none"> 1. Minimize firefighter exposure in areas of standing dead timber throughout the fire areas. 2. Coordinate with the Agency Administrator or their representative when considering dozer line construction. 3. As can be accomplished safely, use minimum impact suppression tactics to maintain wilderness character and protect resources. Complete documentation of all intrusions (chainsaw use, pump use, helicopter landings/bucket drops) in WSAs. 4. All incoming crews, equipment, and vehicles must utilize a weed wash to prevent the introduction of invasive species. In addition to the equipment, crews will remove off-site soil and organic debris. All water delivery equipment will be cleaned prior to use and water sources must be approved by READS prior to cross-use. 5. All food and food waste must be stored in bear proof containers. All fire management activities will follow most recent Interagency Grizzly Bear Guidelines. 6. Maintain and enhance working relationships with partners, cooperators and stakeholders. 7. Coordinate with READS on the rehabilitation of areas impacted by fire management operations. 															
6. Weather Forecast for Period See Attached Weather Forecast															
<p>7. General Safety Message:</p> <p>Communication is a key component of firefighter safety. Please refer to "Communication Responsibilities" on page ix of the Incident Response Pocket Guide.</p>															
<p>8. Attachments (mark if attached)</p> <table border="0"> <tr> <td><input checked="" type="checkbox"/> Organization List - ICS 203</td> <td><input checked="" type="checkbox"/> Weather Forecast</td> <td><input checked="" type="checkbox"/> Safety Message</td> </tr> <tr> <td><input checked="" type="checkbox"/> Div. Assignment Lists - ICS 204</td> <td><input checked="" type="checkbox"/> Fire Behavior Forecast</td> <td></td> </tr> <tr> <td><input checked="" type="checkbox"/> Communications Plan - ICS 205</td> <td><input checked="" type="checkbox"/> Incident Map</td> <td><input checked="" type="checkbox"/> Unit Log – ICS 214</td> </tr> <tr> <td><input checked="" type="checkbox"/> Medical Plan - ICS 206</td> <td><input checked="" type="checkbox"/> Air Operations– ICS 220</td> <td></td> </tr> </table>				<input checked="" type="checkbox"/> Organization List - ICS 203	<input checked="" type="checkbox"/> Weather Forecast	<input checked="" type="checkbox"/> Safety Message	<input checked="" type="checkbox"/> Div. Assignment Lists - ICS 204	<input checked="" type="checkbox"/> Fire Behavior Forecast		<input checked="" type="checkbox"/> Communications Plan - ICS 205	<input checked="" type="checkbox"/> Incident Map	<input checked="" type="checkbox"/> Unit Log – ICS 214	<input checked="" type="checkbox"/> Medical Plan - ICS 206	<input checked="" type="checkbox"/> Air Operations– ICS 220	
<input checked="" type="checkbox"/> Organization List - ICS 203	<input checked="" type="checkbox"/> Weather Forecast	<input checked="" type="checkbox"/> Safety Message													
<input checked="" type="checkbox"/> Div. Assignment Lists - ICS 204	<input checked="" type="checkbox"/> Fire Behavior Forecast														
<input checked="" type="checkbox"/> Communications Plan - ICS 205	<input checked="" type="checkbox"/> Incident Map	<input checked="" type="checkbox"/> Unit Log – ICS 214													
<input checked="" type="checkbox"/> Medical Plan - ICS 206	<input checked="" type="checkbox"/> Air Operations– ICS 220														
9. Prepared by (Planning Section Chief) Al King		9. Approved by (Incident Commander Trainee) Diane Hutton													

ORGANIZATIONAL STRUCTURE CHART		9. Operations Section	
1. Incident Name Clark Fork Complex		Chiefs	Jeff Knudson (9/2)
			Joe Sampson (9/2)
2. Date 08/24/2015			
4. Operational Periods: DAY 0600-2000 Day PDT NIGHT 1800-0800 PDT			
5. Incident Commander and Staff		DIV A	Adam Carr (8/25)
Incident Commander	Diane Hutton (9/2) Craig Glazier (t) (9/2)	DIV Z	Harold Sutherland
Safety Officer	Chris Casey(9/2) , Dennis Talbert (9/2), George Johnson (t) (9/2)	DIV Y	Kevin Smith (9/2)
Information Officer	Bob MacGregor (9/2), Glenda Scott (9/2), John Head, Nan Stinson, Peri Suenram	DIV S	Eric Morgan (9/2)
6. Tribal and Agency Representatives			Cody Montgomery (t) (9/2)
Agency	Name	DIV W	Eric Morgan
USFS Agency Administrator	Christine Dawe		David Wilkins (8/27)
KNF Agency Rep	John Carlson	DIV T	Danny Lemeer (8/25)
IDL Area Manager	Tom Fleer	DIV X	Ed Lynn
READ	Lydia Allen (9/4)	Night Shift	Joel Sather
7. Planning Section			
Chief	Al King (9/2)		
Resources Unit	Jode Boyles Briggs (9/2)		
Status Check In	Mary Greenwood (8/31), Jennifer Burnham (9/4)		
Computer Technical	Chad Wulf (9/2)		
GIS Specialist	Ray Backstrom (9/2), Molly Purnell (9/4), Katie Miller 8/27		
Fire Behavior	Risa Lange-Navarro (9/2)		
GSAN	Jon Rieck (9/2)		
LTAN	Mary Taber (8/30), Diane Abendroth (t) (8/29)		
SITL	Vicki Stephens (8/25)	A. Air Operations Branch	
SOPL	Paul Swenson (t) (8/27)	Branch Director	
IMET	Scott Carpenter (9/4)	Air Attack Supervisor	
8. Logistics Section		Helibase Manager	
Chief	Russ Riebe (9/2), Bill Lauer (9/2)	Air Support Supervisor	Steve Croy (t) (9/4)
Ordering Manager	Mary Ann Hamilton (9/2)	Helicopter Coordinator	
Facilities	Adam Fisher (9/2)	Air Tanker Coordinator	
Equipment Manager	Jeremiah Greene (9/3)	10. Finance	
Communications Unit	Todd Orr (9/2), Jim Olivarez (9/2), Chris Gentili (9/6)	Chief	Joyce Anderson (9/2)
Medical Unit	Linda Barbee (9/2), Pat Burroughs (8/27)	Deputy	
Base Camp Manager	Kyler McCarrell (9/2)	Time Unit	Janis Bouma (t) (9/2)
Supply Unit Leader	Dennis Cameron (9/2)	EQTR/PTRC	Carol Harwood (t) (8/29)
Cabinet Spike Logistics	Mike Justice (8/30)	Compensation/Claims	
Cabinet Spike Ordering	Perry Stebbins (8/25)	Cost Unit	Kevin O.Brien (9/3)
Prepared by: Jode Boyles Briggs RESL			



Clark Fork Complex Weather Forecast



FORECAST NO: 03 **NAME OF FIRE:** Clark Fork Complex
PREDICTION FOR: DAY SHIFT **UNIT:** Idaho Panhandle National Forest
SHIFT DATE: Monday, August 24, 2015 **SIGNED:**

TIME AND DATE **Incident Meteorologist**
FORECAST ISSUED: 2030 Sunday, August 23, 2015 **Scott J. Carpenter**

WEATHER DISCUSSION:

A continued warming trend will be observed today, with unstable low level conditions developing by 1400, even with the expected smoky conditions. Minimum relative humidity values will be around the same as Sunday. Results of increased mixing and stronger winds aloft today will allow for the stronger gusts and drier humidity to be observed, but expect visibility to remain limited with significant smoke already upstream across the Pacific Northwest moving over the area.

FIRE WEATHER WATCH FOR HOT AND UNSTABLE CONDITIONS 1100-2000 PDT

WEATHER FORECAST: Sunny. Hot and unstable in lower levels. Low visibility in smoke.

HIGH TEMPERATURES: 78°-88° (Few degrees warmer)

MINIMUM HUMIDITY: 10%-18% (Around the same)

20 FT WINDS:

SHELTERED AREAS Terrain driven 5-8 mph with gusts to 13-18 mph after 1400.
RIDGETOP/UNSHELTERED AREAS: SW 10-15 mph with gusts to around 25 mph.

HAINES INDEX: 4 (Low)

CWR (>0.10 Inch): 0%

LAL: 1

INVERSIONS/MIXING HEIGHT: Inversion increasing to around 6000 ft MSL around 1100, and 8000 ft MSL by 1400 for Division S and W, with inversion trying to lift around 1200 for Divisions T, Z, A, Y.

OUTLOOK

MONDAY NIGHT: Becoming partly cloudy with isolated thunderstorms after midnight. Thunderstorms will be dry and mainly producing gusty and erratic winds. LAL 2. Low visibility due to smoke. Low temperatures 50-55°F. RH recovery to 55-75%. 20 ft. Winds downslope/downvalley 4-8 mph, with ridgetop winds SW 10-18 mph. Inversion depth increasing to around 3500 feet MSL overnight.

TUESDAY AND TUESDAY NIGHT: Isolated thunderstorms through 1200. LAL 2. Partly cloudy after 1200. High Temperatures 78-88°F. Minimum RH 15-24%. Low Temperatures 48-56°F. Maximum RH 55-70%. 20 ft. Winds SW 10-12 mph with gusts to 20 mph after 1100, with SW 15-20 mph at the ridgetops.

WEDNESDAY AND WEDNESDAY NIGHT: Mostly clear early, becoming partly cloudy after 1200. 10% Chance for a shower or isolated thunderstorms after 1200. High Temperatures 82-90°F. Minimum RH 14-22%. Low Temperatures 54-60°F. Maximum RH 50-65%. 20 ft. Winds terrain driven 3-5 mph with gusts to 10 mph, with SW 10 mph at the ridgetops.

FIRE BEHAVIOR FORECAST

FORECAST NUMBER: #4	TYPE OF FIRE: Wildland Fires
FIRE NAME: Clark Fork Complex	OPERATIONAL PERIOD: Day 08/24/15
DATE ISSUED: 08/23/15	TIME ISSUED: 2030 hrs
UNIT: Sandpoint RD/Idaho Panhandle NF/ID & Cabinet RD/Kootenai NF/MT	SIGNED: Risa Lange-Navarro, FBAN <i>/s/ Risa Lange-Navarro</i>

INPUTS

WEATHER SUMMARY: Fire Weather Watch for Hot & Unstable conditions 1100-2000 PDT
 See Attached Spot Weather Forecast for further information.
 North ID/Southern Mtns ERC **Observed** for 8/23/15 **83**
 Kootenai NF ERC **Observed** for 8/23/15 **63**

OUTPUTS

FIRE BEHAVIOR

GENERAL:

- Available fuels include moose moss, lichen, beargrass, some brush, Lodgepole pine, Whitebark pine, Subalpine fir, White fir, Douglas-fir, Western Larch, Ponderosa pine, Western Red Cedar and Western Hemlock. Standing dead & snags with jackpots of heavy dead/downed and/or rotten fuels and snags are numerous. Marsh & valley bottoms burning readily and not a barrier. Fuel model 2, 8, 9 & 10. Fuels are extremely dry for this time of year and burning as if it was mid-September. Estimated 1000 hrs fuel moistures 10-13% & live fuel moisture 100%.
- Topography consists of steep, rocky drainages along Bull River & Clark Fork River with flat valley bottoms.
- Main fire behavior has surface fire (head, backing, flanking, creeping & smoldering), single/group torching trees and short-duration crown runs. Rollouts common with fire burning back upslope. Intensely burning heavy fuel jackpots is igniting tree moss/other ladder fuels torching out and spotting. Spotting distance potential up to 0.2 miles, expect further distance if sustained strong winds or thunderstorm winds occur. Snags & fire weakened trees falling down. Reburn potential is high.
- Watch for alignment of slope, winds and fuels for most active fire behavior.
- Burn period has been from 1000 to 2030 hrs with the main peak hours from 1930-2030 hrs for Bull River fires, 1400-1800 hrs for Whitetail and Scotchman fires.
- Probability of ignition about +/-85% on Unshaded South aspects with Fine Dead Fuel Moisture 3%.
- **Develop trigger points for your disengagement if fire behavior threatens your safety.**

SPECIFIC: Ensure lookouts are in a good safe spot where they can observe the fire activity/weather. Take hourly weather observations and bring them to Clark Fork ICP at end of shift.

Div A/I/Z: Fire spread will be on all perimeters unchecked by suppression activities with head, flanking & backing fire. The southwest corner is working its way downslope in Blacktail Cr. Spread downcanyon on the east side continues toward the Pillick trail Expect jackpots of heavy dead/downed fuels to continue burning; single/group tree torching & spotting. Expect higher chances for short-duration crown runs with predicted lower RHs and higher temperatures. Rates of spread: head fire <22 ch/hr, flanking <19 ch/hr, backing <14 ch/hr; Flame Lengths: <9 ft. Spotting up to 0.2 mile. Watch for spots in areas where the smoke column has lain over yesterday and during the night.

Div S: Fire continues to slowly spread southwest/south with predominately backing fire. Expect jackpots of heavy dead/downed fuels to continue burning; single tree torching. Rates of spread: head fire <6 ch/hr, backing <4 ch/hr; Flame Lengths: <7 ft. Watch for spots in areas where the smoke column has lain over downslope during the evening hours.

Div T: Fire will continue to spread predominately upslope toward Sawtooth Mountain up Ross Cr. There is a lot of scattered heat throughout the fire "footprint" and its spot to the northeast toward Ross Pt. Fire behavior that can be expected is burning jackpots of heavy dead/downed fuels; single/group tree torching & spotting. Expect higher chances for short-duration crown runs with predicted lower RHs and higher temperatures. Rollouts are very common with upslope runs following up. Rates of spread: head fire <22 ch/hr, backing <14 ch/hr; Flame Lengths: <9 ft. Short range spotting up to 0.2 mile. Watch for spots in areas where the smoke column has lain over yesterday and during the evening.

Div W: Fires will continue to spread down on both sides of the ridge between Whitetail Peak and Beaver Peak with backing fire and to the east toward the head of Blacktail Cr as well as off the south end toward Beaver Peak. Fire is still hung up in a regeneration unit on the southwest side. Expect jackpots of heavy dead/downed fuels to continue burning; single/group tree torching & spotting. Expect higher chances for short-duration crown runs with predicted lower RHs and higher temperatures. Great opportunities to burnout line along road on either side of DP #3 early in the day. Rates of spread: head fire <10 ch/hr, backing <4 ch/hr; Flame Lengths: <7 ft. Spotting up to ¼ mile. Watch for spots in areas where the smoke column has lain over to the northeast during the day and downslope during the night. Be aware of the fire in Div X which is below and downcanyon from your fire to the southwest.

Div X: Moderate fire behavior can be expected in the form of creeping & smoldering in the interior before early afternoon, then open flame along the perimeter in areas not mopped-up until shadowed out in the evening. If fire behavior picks up with lower RHs and warmer temperatures expect fire to have rates of spread: head fire <6 ch/hr timber, backing <4 ch/hr, flame lengths <2 ft. Watch for spots in areas where the smoke column has lain over yesterday & during the evening.

Div Y: Spread continues on all sides with head, flanking & backing fire with predominant spread into Basin Cr. Expect jackpots of heavy dead/downed fuels to continue burning; single/group tree torching & spotting. Expect higher chances for short-duration crown runs with predicted lower RHs and higher temperatures. Rates of spread: head fire <22 ch/hr, flanking <5 ch/hr, backing <6 ch/hr; Flame Lengths: <9 ft. Spotting up to 0.2 mile. Watch for spots in areas where the smoke column has lain over yesterday and downslope overnight.

Night Operations: See the above Division breakout above for information on your location throughout the night. Most likely see activity in any thermal belts that form overnight with backing fire and jackpots burning out. Be aware of smoky conditions from the day's fire activity which may obscure your vantage points.

AIR OPERATIONS: Look for smoky conditions to mix out after 1100 hrs, again gusty winds predicted in the afternoon.

SAFETY

Standard Fire Order for today **#4 Identify escape routes and safety zones, and make them know.** The fire areas are spread out over a large area and different terrain & fuels AND escape routes and safety zones are few and far between out there. Have at least two of each that work for you and your location AND make sure you have timed it and have actually touched the fuels and ground along the escape routes and in the safety zones, to get it implanted in your brains.

PLEASE GIVE FEEDBACK, it's greatly appreciated!

ASSIGNMENT LIST		1. Branch	2. Division/Group			
3. Incident Name		4. Operational Period				
Clark Fork Complex		Date: 08/24/2015		Time: 0600-2000		
5. Operations Personnel						
Operations Chief	Jeff Knudson, Joe Sampson		Division/Group Supervisor	Adam Carr (8/25)		
Branch Director			Air Support Group Supervisor	Steve Croy (t)		
6. Resources Assigned This Period						
Strike Team/Task Force/ Resource Designator	Last Shift	Leader	No. Pers.	Trans. Needed	Drop Off PT./Time	Pick Up PT./Time
STEN		Gilham, Krick (t)	2	N	DP 21 0700	Cabinet Spike 1930
LEO		JD Griffel	1	N	DP 21 0700	Cabinet Spike 1930
READ		Mark Mason	1	N	DP 21 0700	Cabinet Spike 1930
EMT		T Hightower/R. Myers	2	N	DP 21 0700	Cabinet Spike 1930
SAFETY	8/25	Pat Flanary	1	N	DP 21 0700	Cabinet Spike 1930
Geronimo IHC		Julius Hostetler	20	N	DP 21 0700	Cabinet Spike 1930
T4 ENG E-6605		Jason Snellman	4	N	DP 21 0700	Cabinet Spike 1930
T6 ENG Brush 104		Bledsoe	3	N	DP 21 0700	Cabinet Spike 1930
ENG T6 E-472		Matt Etienne	3	N	DP 21 0700	Cabinet Spike 1930
T6 ENG Trout Creek Brush #134		RURAL	2	N	DP 21 0700	Cabinet Spike 1930
Noxon WT-3		RURAL	1	N	DP 21 0700	Cabinet Spike 1930
Aqua Enterprises WT		M. McNew	1	N	DP 21 0700	Cabinet Spike 1930
Jensen Excavator 2		Duane Jensen	1	N	DP 21 0700	Cabinet Spike 1930
Ibex Excavator		Eric Weare	1	N	DP 21 0700	Cabinet Spike 1930
Ibex Dozer		Mickey Weare	1		DP 21 0700	Cabinet Spike 1930
Jensen Dozer		Bill Jensen	1	N	DP 21 0700	Cabinet Spike 1930
Jensen Skidgine		Joe Brodmarkle	1	N	DP 21 0700	Cabinet Spike 1930
7. Control Operations						
Continue improvement along Dry Creek and private property. Hold fire south of Dry Creek Road West of private property.						
8. Special Instructions						
Take hourly weather observations and bring to ICP at end of shift.						
Function	Frequency - RX	Frequency - TX	Tone	Channel	Comments	
Command	170.4125	165.9625	141.3	7	ICP TO LINE	
Command						
Tactical	168.0500	168.0500	141.3	1		
Air to Ground	170.1125	170.1125		15		
Prepared by (RESL) Jode Boyles Briggs		Approved by (PSC)		Date 08/23/2015	Time 2200	

ASSIGNMENT LIST		1. Branch	2. Division/Group			
3. Incident Name		4. Operational Period				Z
Clark Fork Complex		Date: 08/24/2015		Time: 0600-2000		
5. Operations Personnel						
Operations Chief	Jeff Knudson, Joe Sampson		Division/Group Supervisor	Harold Sutherland		
Branch Director			Air Support Group Supervisor	Steve Croy (t)		
6. Resources Assigned This Period						
Strike Team/Task Force/ Resource Designator	Last Shift	Leader	No. Pers.	Trans. Needed	Drop Off PT./Time	Pick Up PT./Time
STEN (t)		Mark Wideman	1	N	East Fork Road 0700	Cabinet Spike 1930
HEQB		Todd Caudill	1	N	East Fork Road 0700	Cabinet Spike 1930
EMTF		F. Sperlak, M. Littler	2	N	East Fork Road 0700	Cabinet Spike 1930
LEO		JD Griffel	1	N	East Fork Road 0700	Cabinet Spike 1930
T21A Mississippi C-1	9/4	Barker, Black (t)	20	N	East Fork Road 0700	Cabinet Spike 1930
D7 District Crew		Jim Chambers	5	N	East Fork Road 0700	Cabinet Spike 1930
T6 ENG Thompson Falls 141			3	N	East Fork Road 0700	Cabinet Spike 1930
T6 ENG Nox 50		Eddie Harsh	3	N	East Fork Road 0700	Cabinet Spike 1930
ENG T6 Noxon E-114		RURAL	2	N	East Fork Road 0700	Cabinet Spike 1930
ENG T6 Bull Lake Engine #1260		Clyde Miller (RURAL)	3	N	East Fork Road 0700	Cabinet Spike 1930
DOZER E-28			1	N	East Fork Road 0700	Cabinet Spike 1930
WT Trout Creek 136		RURAL	1	N	East Fork Road 0700	Cabinet Spike 1930
Backwoods Excavator E-1		Peter Hammond	1	N	East Fork Road 0700	Cabinet Spike 1930
Excavator E-20		Whitmarsh	2	N	East Fork Road 0700	Cabinet Spike 1930
Backwoods Bobcat		Levi Klaus	1	N	East Fork Road 0700	Cabinet Spike 1930
7. Control Operations						
Hold established lines from A/Z Division break to West Pillick Road. Look for opportunities to use Pillick Trail as holding line on East flank of Napoleon Fire.						
8. Special Instructions						
Take hourly weather observations and bring to ICP at end of shift.						
Function	Frequency - RX	Frequency - TX	Tone	Channel	Comments	
Command	170.4125	165.9625	141.3	7		
Command						
Tactical	168.2000	168.2000	141.3	2		
Air to Ground	170.1125	170.1125		15		
Prepared by (RESL) Jode Boyles Briggs		Approved by (PSC)		Date 08/23/2015		Time 2200

ASSIGNMENT LIST			1. Branch		2. Division/Group		
3. Incident Name			4. Operational Period				
Clark Fork Complex			Date: 08/24/2015		Time: 0600-2000		
5. Operations Personnel							
Operations Chief		Jeff Knudson, Joe Sampson		Division/Group Supervisor		Kevin Smith	
Branch Director				Air Support Group Supervisor		Steve Croy (t)	
6. Resources Assigned This Period							
Strike Team/Task Force/ Resource Designator	Last Shift	Leader	No. Pers.	Trans. Needed	Drop Off PT./Time	Pick Up PT./Time	
FOBS	8/29	Ohlwieler	2	N	Hwy 56/200 0700	ICP 2000	
Jensen Excavator 1		Quentin Jensen	1	N	Hwy 56/200 0700	Cabinet Spike 1930	
7. Control Operations							
<p>Implement structure protection on threatened values. Work with Sheriff Department on notification plan in the event of evacuation. Monitor movement of Government Fire.</p>							
8. Special Instructions							
<p>Take hourly weather observations and bring to ICP at end of shift.</p>							
Function	Frequency - RX	Frequency - TX	Tone	Channel	Comments		
Command	170.4125	165.9625	141.3	7			
Command							
Tactical	168.6000	168.6000	141.3	3			
Air to Ground	170.1125	170.1125		15			
Prepared by (RESL) Jode Boyles Briggs		Approved by (PSC)		Date 08/23/2015		Time 2200	

ASSIGNMENT LIST			1. Branch		2. Division/Group		
3. Incident Name			4. Operational Period				
Clark Fork Complex			Date: 08/24/2015		Time: 0600-2000		
5. Operations Personnel							
Operations Chief		Jeff Knudson, Joe Sampson		Division/Group Supervisor		Cody Montgomery (t)	
Branch Director				Air Support Group Supervisor		Steve Croy (t)	
6. Resources Assigned This Period							
Strike Team/Task Force/ Resource Designator	Last Shift	Leader	No. Pers.	Trans. Needed	Drop Off PT./Time	Pick Up PT./Time	
Skidder Fousts E-37	9/3		1		Clark Fork 0700	ICP 1930	
Skidder Fousts E-38	9/3		1		Clark Fork 0700	ICP 1930	
7. Control Operations							
Complete heavy equipment line from Cascade Creek to Blue Creek. Monitor fire growth.							
8. Special Instructions							
Take hourly weather observations and bring to ICP at end of shift.							
Function	Frequency - RX	Frequency - TX	Tone	Channel	Comments		
Command	170.4125	165.9625	141.3	7			
Command							
Tactical	168.6000	168.6000	141.3	3			
Air to Ground	162.6125	162.6125		14			
Prepared by (RESL) Jode Boyles Briggs		Approved by (PSC)			Date 08/23/2015		Time 2200

ASSIGNMENT LIST			1. Branch		2. Division/Group		
					W		
3. Incident Name			4. Operational Period				
Clark Fork Complex			Date: 08/24/2015		Time: 0600-2000		
5. Operations Personnel							
Operations Chief		Jeff Knudson, Joe Sampson		Division/Group Supervisor		Eric Morgan, David Wilkins (t) 8/27	
Branch Director				Air Support Group Supervisor		Steve Croy (t)	
6. Resources Assigned This Period							
Strike Team/Task Force/ Resource Designator	Last Shift	Leader	No. Pers.	Trans. Needed	Drop Off PT./Time	Pick Up PT./Time	
TFLD O-1.7	8/27	Reser	1	N	DP 1 0700	ICP 1930	
HEQB		Bill Case, Dennis Gillmer (t)	2	N	DP 1 0700	ICP 1930	
TFLD		Wayne Pesch, Bryce Barth (t)	1	N	DP 1 0700	ICP 1930	
EMTF	9/4	Steven Williamson	1	N	DP 1 0700	ICP 1930	
Red Medic E 26	9/3	Rex Nielsen	1	N	DP 1 0700	ICP 2000	
Idaho Panhandle IHC C-5	9/1	Nipp	21	N	DP 1 0700	ICP 1930	
DOZER E-1 Wink 650K Dozer		Metzger	2	N	DP 1 0700	ICP 1930	
ENG T6 E-661		Loveless	5	N	DP 1 0700	ICP 1930	
Dozer Cat D4 E-6		Akre	2	N	DP 1 0700	ICP 1930	
Water Tender E-10	9/1	Gieser	2	N	DP 1 0700	ICP 1930	
Water Tender E-24		Swisher	1	N	DP 1 0700	ICP 1930	
Wink Excavator E-8		Winkelseth	2	N	DP 1 0700	ICP 1930	
Feller Buncher E-32		Evans	1	N	DP 1 0700	ICP 1930	
Feller Buncher E-34	9/5	Schnabl	2	N	DP 1 0700	ICP 1930	
Feller-Buncher 455 EXL E-5		Zielinski	2	N	DP 1 0700	ICP 1930	
T2 Skidgine E-12	9/1	Alderdice	1	N	DP 1 0700	ICP 1930	
T2 Skidgine E-13	9/1	Pittman	2	N	DP 1 0700	ICP 1930	
T2 Excavator #-25 Akre Logging			1	N	DP 1 0700	ICP 1930	
7. Control Operations							
Utilize air resources and equipment to improve line along ridge.							
8. Special Instructions							
Take hourly weather observations and bring to ICP at end of shift.							
Function	Frequency - RX	Frequency - TX	Tone	Channel	Comments		
Command	170.4125	165.9625	141.3	7			
Command							
Tactical	166.7250	166.7250	141.3	4			
Air to Ground	162.6125	162.6125		14			
Prepared by (RESL) Jode Boyles Briggs		Approved by (PSC)		Date 08/23/2015		Time 2200	

ASSIGNMENT LIST			1. Branch	2. Division/Group				
3. Incident Name			4. Operational Period				T	
Clark Fork Complex			Date: 08/24/2015		Time: 0600-2000			
5. Operations Personnel								
Operations Chief	Jeff Knudson, Joe Sampson		Division/Group Supervisor	Danny Lemeer 8/25				
Branch Director			Air Support Group Supervisor	Steve Croy (t)				
6. Resources Assigned This Period								
Strike Team/Task Force/ Resource Designator	Last Shift	Leader	No. Pers.	Trans. Needed	Drop Off PT./Time	Pick Up PT./Time		
T6 ENG Castle Mountain	9/3	Brandon Bakken	3	N	DP 20 0700	ICP 1930		
T6 ENG Bull Lake #1230 E-58	9/5	Michael Reese	2	N	DP 20 0700	ICP 1930		
T6 ENG Fisher Rv. Red		Jason McAllister	2	N	DP 20 0700	ICP 1930		
7. Control Operations								
<p>Begin implementation of protection measures in Ross Creek Cedars Recreation Area.</p> <p>Assess structure protection needs along Bull Lake.</p> <p>Work with Sheriff Department on notification plan in the event of evacuation and recommend public safety measures needed in Ross Creek Cedars and Bad Medicine Campground</p> <p>Monitor Sawtooth Fire growth.</p>								
8. Special Instructions								
<p>Minimize suppression impacts to lower Ross Creek RNA, Spar Springs, and Ross Creek Wild and Scenic River Corridor.</p> <p>Take hourly weather observations and bring to ICP at end of shift.</p>								
Function	Frequency - RX	Frequency - TX	Tone	Channel	Comments			
Command	170.4125	165.9625	141.3	7				
Command								
Tactical	166.7750	166.7750	141.3	5				
Air to Ground	170.1125	170.1125	15					
Prepared by (RESL) Jode Boyles Briggs		Approved by (PSC)		Date 08/23/2015		Time 2200		

ASSIGNMENT LIST			1. Branch		2. Division/Group		
					X		
3. Incident Name			4. Operational Period				
Clark Fork Complex			Date: 08/23/2015		Time: 0600-2000		
5. Operations Personnel							
Operations Chief		Jeff Knudson, Joe Sampson		Division/Group Supervisor		Ed Lynn	
Branch Director				Air Support Group Supervisor		Steve Croy (t)	
6. Resources Assigned This Period							
Strike Team/Task Force/ Resource Designator	Last Shift	Leader	No. Pers.	Trans. Needed	Drop Off PT./Time	Pick Up PT./Time	
Smokejumpers		Newell	8	Y	Marten Fire	Marten Fire	
7. Control Operations							
Perimeter control of Marten Fire.							
8. Special Instructions							
Assess need for replacement of smokejumpers in two days 08/26/2015.							
Function	Frequency - RX	Frequency - TX	Tone	Channel	Comments		
Command	170.4125	165.9625	141.3	7			
Command							
Tactical	166.7750	166.7750	141.3	5			
Air to Ground	162.6125	162.6125					
Prepared by (RESL)		Approved by (PSC)			Date		Time
Jode Boyles Briggs					08/23/2015		2200

ASSIGNMENT LIST			1. Branch		2. Division/Group		
					NS		
3. Incident Name			4. Operational Period				
Clark Fork Complex			Date: 08/24/2015		Time: 1800-0800		
5. Operations Personnel							
Operations Chief		Jeff Knudson, Joe Sampson		Division/Group Supervisor			
Branch Director				Air Support Group Supervisor		N/A	
6. Resources Assigned This Period							
Strike Team/Task Force/ Resource Designator	Last Shift	Leader	No. Pers.	Trans. Needed	Drop Off PT./Time	Pick Up PT./Time	
TFLD		Joel Sather	1	N	Highway 56/200 1900	Cabinet Spike 0700	
T6 ENG E-1260 Bull Lake VFW		Jeff Drake	3	N	Highway 56/200 1900	ICP 0700	
T6 ENG Bishop		Will Hughes	3	N	Highway 56/200 1900	ICP 0700	
T6 ENG 621 Lake George		George Ross	2	N	Highway 56/200 1900	ICP 0700	
T6 ENG 8561		John Worthington	3	N	Highway 56/200 1900	ICP 0700	
T6 ENG 71		Jerry Montella	3	N	Highway 56/200 1900	Cabinet Spike 0700	
WT-3, WT-6		Unstaffed /Staged					
7. Control Operations							
Patrol fires along Highway 56 and Highway 200 on Divisions A, Z, Y. As necessary notify residents of increased fire behavior approaching their homes.							
8. Special Instructions							
Take hourly weather observations and bring to ICP at end of shift.							
Function	Frequency - RX	Frequency - TX	Tone	Channel	Comments		
Command	170.4125	165.9625	141.3	7			
Command							
Tactical	166.7750	166.7750	141.3	5			
Air to Ground							
Prepared by (RESL) Jode Boyles Briggs		Approved by (PSC)			Date 08/23/2015		Time 2200

ASSIGNMENT LIST			1. Branch		2. Division/Group		
3. Incident Name			4. Operational Period				Staging
Clark Fork Complex			Date: 08/24/2015		Time: 0600-2000		
5. Operations Personnel							
Operations Chief		Jeff Knudson, Joe Sampson		STAM		Jeremiah Greene	
Branch Director				Air Support Group Supervisor		Steve Croy (t)	
6. Resources Assigned This Period							
Strike Team/Task Force/ Resource Designator	Last Shift	Leader	No. Pers.	Trans. Needed	Drop Off PT./Time	Pick Up PT./Time	
T3 DOZ Taylor Services E 42	9/4	Bob Taylor	1	N	Heron Staging 0700	Heron Staging 2000	
T3 DOZ Taylor and Sons E 43	9/4	Dave Taylor	1	N	Heron Staging 0700	Heron Staging 2000	
T1 Fellerbuncher Hallwood E-35	9/06	Jesse Conley	1	N	Heron Staging 0700	Heron Staging 2000	
Price Contracting Excavator E-25		Nick Smith	1	N	Heron Staging 0700	Heron Staging 2000	
7. Control Operations							
Be prepared for line assignment, monitor Command Channel 7 on the radio.							
8. Special Instructions							
Function	Frequency - RX	Frequency - TX	Tone	Channel	Comments		
Command	170.4125	165.9625	141.3	7			
Command							
Tactical							
Air to Ground							
Prepared by (RESL)		Approved by (PSC)		Date		Time	
Jode Boyles Briggs				08/23/2015		2200	

AIR OPERATIONS SUMMARY

Prepared By: Steve Croy – ASGS(t)

08/23/2015

Prepared Time: 20:00

1. INCIDENT NAME: Clark Fork Complex	2. OPS PERIOD DATE: 08/24/2015	START TIME: 0600	END TIME: 2000	SUNRISE: MT/ID 0647 / 0553	SUNSET: MT/ID 2044 / 1947
3. REMARKS (Safety Notes, Hazards, Air Operations Special Equipment): - Communicate known flight hazards to your pilot: wires, towers, snags, other aircraft. - Aircraft requests will be made thru Line Operations. - AFTER Aug 15: Fed aircraft will cease tactical operations after sundown, flight after sundown shall be ferry back to base only. - Smoke & limited visibility expected in the morning & likely all day.			4. READY ALERT AIRCRAFT MEDEVAC – Contact Clark Fork Complex ICP Communication with Request.		5. TFR's: New TFR in place @ 0800, 5nm centered Whitetail Peak A/A freq 124.650, Surface to 7000' MSL

6. PERSONNEL	NAME	PHONE #	7. FREQUENCIES	AM	FM	8. FIXED-WING- Type/ Make-Model/ N#/ Base										
ASGS	Jeff Polack	###	Idaho Air / Air	124.650		AIRTANKERS: Request Thru Operations										
ASGS (t)	Steve Croy	540-230-2568 leave msg	Idaho Air/Ground		162.6125	SEATS: Request thru Operations										
			Montana Air to Air	132.6750		ATGS AIRCRAFT: Request Thru Operations										
			Montana Air/Ground		170.1125											
			Air Guard		168.6250 TX tone 110.9	Helispots & Dipsites:										
						<table style="width: 100%; border-collapse: collapse;"> <thead> <tr> <th style="width: 15%;">Name</th> <th style="width: 15%;">Lat</th> <th style="width: 15%;">Long</th> <th style="width: 10%;">Elev</th> <th style="width: 45%;">Comments</th> </tr> </thead> <tbody> <tr> <td>Heron Helispot</td> <td>48 04.67'</td> <td>115 58.23'</td> <td>2300'</td> <td>mowed pasture, south MT200, west of staging</td> </tr> </tbody> </table>	Name	Lat	Long	Elev	Comments	Heron Helispot	48 04.67'	115 58.23'	2300'	mowed pasture, south MT200, west of staging
Name	Lat	Long	Elev	Comments												
Heron Helispot	48 04.67'	115 58.23'	2300'	mowed pasture, south MT200, west of staging												
NOTE: Aircraft requests are placed through Coeur d'Alene Dispatch. Plan ahead for timely arrival of aircraft.																

FAA N#	T Y	MAKE/ MODEL	BASE	MGR.	AVAIL	REMARKS	FAA N#	T Y	MAKE/ MODEL	BASE	MGR.	AVAIL	REMARKS
N414 <i>KNF IA</i>	1	Kmax	Libby S59	Gray	0800	Gallatin EXU	4CH	1	BV-107	Shoshone	###	0800	Ops will place order as needed.
N793HT <i>KNF IA</i>	1	CH-54 SkyCrane	Libby S59	McQueary	0800	Cedar City EXU	9CH	1	BV-107	Shoshone	###	0800	Ops will place order as needed.
N122Z <i>KNF IA</i>	2	Bell 212HP	Libby S59	Benfatti +10	0800	Gallatin Rappel EXU	N6148U	3	Bell 407	Shoshone	###	0800	Ops will place order as needed.
N44MA <i>KNF IA</i>	3	Bell 407	Libby S59	Blaz+ 2	0800	Libby EXU							

NOTE:

10. TASK/ MISSION/ ASSIGNMENT (Type/ function includes: Air Tactical, Retardant, Recon, Personnel Transport, Bucket Operations, SAR, etc.)													
Missions: OPS, FBAN/LTAN recons; & bucket work as requested; Support Zone I.A. & fire logistics / communications													

SAFETY MESSAGE

Constantly weigh the **Benefits** to be gained with the **Risks** you are taking.

Working with "Big Iron"

Dozers, Feller Bunchers, Skidgines and Masticators provide suppression and support capability for our Fire Operations. When working on or around heavy equipment on the fire line, it is important to respect the following guidelines.

- Load/unload equipment from the transport in a safe manner on a level, stable surface.
- Park Transports in an area free of fuel. Clear an area if needed to protect equipment.
- When working with heavy equipment, stay at least 100 feet in front and at least 50 feet behind the equipment. Items such as a hot saw on a feller buncher may spit chain shot out up to 300 feet out!
- Stay well back when hitches of logs pass by, they can move quickly and logs can jump off the trail at your legs.
- Never approach the equipment without getting the operators attention. Let them shut down the equipment and approach from the right.
- Don't work directly downhill from equipment above you.
- Use hand signals for direction and Safety.
- Do not use Big Iron without a canopy, brush guard and radio communications.
- Operators are required to wear PPE and carry a fire shelter.
- Be aware of different fuel types, rates of spread and flammability.
- Watch for wetlands, steep slopes, rocks and other obstacles that might stop the equipment.
- Do not get too far ahead of a firing crew during firing operations.
- Allow no one but the operator to ride on the equipment.

MEDICAL PLAN (ICS 206 WF)

1. Incident/Project Name		2. Operational Period			
Clark Fork Complex		Date/Time 08-24-2015		0600-2200	
3. Ambulance Services					
Name	Complete Address	Phone & EMS Frequency	Advanced Life Support (ALS) Yes No		
Noxon Ambulance Service	Noxon, Montana	Ordered through CDC, call ICP on Command 1 for dispatch.	NO		
Clark Fork Ambulance	Clark Fork, ID	208-266-1574	YES		
Libby Volunteer Ambulance	Libby, Montana	406-293-4112	YES		
Bonner Emergency EMS	Sandpoint, Idaho	208-255-2194	YES		
4. Air Ambulance Services					
Name	Phone	Type of Aircraft & Capability			
Life Flight Network	800-232-0911	Rotor and fixed wing , ALS with night capabilities			
Alert Air Rescue	406-752-9797	Helicopter, ALS with night capabilities			
Northwest Medstar	800-5723201	Rotor and Fixed Wing, ALS with night capabilities			
5. Hospitals					
Name Complete Address	GPS Datum – WGS 84 Coordinate Standard Degrees Decimal Minutes DD° MM.MMM' N - Lat DD° MM.MMM' W - Long	Travel Time Air Gnd	Phone	Helipad Yes No	Level of Care Facility
Bonner General, 520 N 3 rd Ave, Sandpoint, ID 83864	Lat:	15 min	208-263-1441	<input checked="" type="checkbox"/> <input type="checkbox"/>	Critical Access
	Long:	45-60 min			
Kootenai Medical 203 Lincoln Way, Coeur d' Alene.83814	Lat:	20 min	208-666-2000	<input checked="" type="checkbox"/> <input type="checkbox"/>	Level 2 Trauma
	Long:	60-90 min			
Kalispell Regional Hospital, 310 Sunny View Lane, Kalispell, MT	Lat:		406-752-5111	<input checked="" type="checkbox"/> <input type="checkbox"/>	Trauma Level 3
	Long:				
6. Division Branch Group		Area Location Capability			
ICP / Medical Unit	EMS Responders & Capability:	MEDL and Paramedic at night.			
	Equipment Available on Scene:	First Aid and Basic Life Support			
	Medical Emergency Channel:	Command 1			
	Ambulance to Scene	45 minutes			
	Air:	30 min			
	Approved Helispot:	yes			
	Lat:	43 03.51 N			
Long:	116 01.58 W				
Sanders County Search and Rescue ICP- 406-847-2193	EMS Responders & Capability:	2 EMTs			
	Equipment Available on Scene:	Basic Life Support			
	Medical Emergency Channel:	Command 1			
	ETA for Ambulance to Scene:				
	Air:	45 min			
	Approved Helispot:				
	Lat:	48 11.93 3 N			
Long:	115 51.687 W				
DIV A	EMS Responders & Capability:	2 EMTs			
	Equipment Available on Scene:	Basic Life Support			
	Medical Emergency Channel:	Command 1			
	ETA for Ambulance to Scene:				
	Air:	45 min			
	Approved Helispot:				
	Lat:	48 11.93 3 N			
Long:	115 51.687 W				

MEDICAL PLAN (ICS 206 WF)

DIV Z	EMS Responders & Capability:	2 EMTs Paramedic (Red Medic) response upon DIV request.
	Equipment Available on Scene:	Basic Life Support
	Medical Emergency Channel:	Command 1
	ETA for Ambulance to Scene:	
	Air:	45 min
	Lat:	48 11.93 3 N
	Long:	115 51.687 W
DIV Y	EMS Responders & Capability:	Paramedic (Red Medic)
	Equipment Available on Scene:	
	Medical Emergency Channel:	Command 1
	ETA for Ambulance to Scene:	
	Air:	
	Approved Helispot	Gravel Pit
	Lat:	48 2.339 N
Long:	115 50.328 W	

DIV T	EMS Responders & Capability:	Paramedic (Red Medic) available to respond upon Division request.
	Equipment Available on Scene:	
	Medical Emergency Channel:	Command 1
	ETA for Ambulance to Scene:	
	Approved Helispot	DP 20
	Lat:	48 11.939 N
Long:	115 51.672 W	

DIV X	EMS Responders & Capability:	Smoke Jumpers on scene
	Equipment Available on Scene:	
	Medical Emergency Channel:	Command 1
	ETA for Ambulance to Scene:	Inaccessible by ground
	Approved Helispot	DP 2 or as identified by Jumpers at the time of emergency
	Lat:	48 1.551 N
	Long:	116 10.197 W

DIV NS	EMS Responders & Capability:	Medical will respond from ICP as needed at night
	Equipment Available on Scene:	BLS/ALS
	Medical Emergency Channel:	Command 1
	ETA for Ambulance to Scene:	
	Air:	
	Lat:	
Long:		

7. Name & Location	Area Location Capability			
DIV S	EMS Responders & Capability:	1 EMT F (Whiskey Medic) Able to respond upon DIV request		
	Equipment Available on Scene:	BLS/ALS		
	Medical Emergency Channel:	Command 1		
	ETA for Ambulance to Scene:			
	Air:			
	Approved Helispot :	DP 2		
	Lat:	48 9.167 N		
Long:	115 52.319 W			
DIV W	EMS Responders & Capability	1 EMTF (Whiskey Medic) at DP 2		
	Equipment Available on Scene:	BLS/ALS		
	Medical Emergency Channel:	Command 1		
	ETA for Ambulance to Scene:			
	Air:			
	Approved Helispot:	DP 2		
	Lat:	48 9.167 N		
Long:	115 52.319 W			
8. Prepared By: MEDL		9. Date/Time	10. Reviewed By (Safety Officer)	11. Date/Time
Patricia Burroughs MEDL		08/23/2015 2000	Chris Casey	@ 2000 hrs.

Medical Incident Report

FOR ALL MEDICAL EMERGENCIES: IDENTIFY ON SCENE INCIDENT COMMANDER BY NAME AND POSITION AND ANNOUNCE "MEDICAL EMERGENCY" TO INITIATE RESPONSE FROM IMT COMMUNICATIONS/DISPATCH.

Use items one through nine to communicate situation to communications/dispatch.

1. CONTACT COMMUNICATIONS/DISPATCH

Ex: "Communications, Div. Alpha. Stand-by for Priority Medical Incident Report." (If life threatening request designated frequency be cleared for emergency traffic.)

2. INCIDENT STATUS: Provide incident summary and command structure.

Nature of Injury/Illness		<i>Describe the injury (Ex: Broken leg with bleeding)</i>
Incident Name		<i>Geographic Name + "Medical" (Ex: Trout Meadow Medical)</i>
Incident Commander		<i>Name of IC</i>
Patient Care		<i>Name of Care Provider (Ex: EMT Smith)</i>

3. INITIAL PATIENT ASSESSMENT: Complete this section for each patient. This is only a brief, initial assessment. Provide additional patient info after completing this 9 Line Report.

Number of Patients:	Male / Female	Age:	Weight:
Conscious? <input type="checkbox"/> YES <input type="checkbox"/> NO = MEDEVAC!			
Breathing? <input type="checkbox"/> YES <input type="checkbox"/> NO = MEDEVAC!			
Mechanism of Injury: <i>What caused the injury?</i>			
Lat/Long (Datum WGS84) <i>Ex: N 40° 42.45' x W 123° 03.24'</i>			

4. SEVERITY OF EMERGENCY, TRANSPORT PRIORITY

SEVERITY	TRANSPORT PRIORITY
<input type="checkbox"/> URGENT-RED Life threatening injury or illness. <i>Ex: Unconscious, difficulty breathing, bleeding severely, 2° – 3° burns more than 4 palm sizes, heat stroke, disoriented.</i>	Ambulance or MEDEVAC helicopter. Evacuation need is IMMEDIATE.
<input type="checkbox"/> PRIORITY-YELLOW Serious Injury or illness. <i>Ex: Significant trauma, not able to walk, 2° – 3° burns not more than 1-2 palm sizes.</i>	Ambulance or consider air transport if at remote location. Evacuation may be DELAYED.
<input type="checkbox"/> ROUTINE-GREEN Not a life threatening injury or illness. <i>Ex: Sprains, strains, minor heat-related illness.</i>	Non-Emergency. Evacuation considered Routine of Convenience.

5. TRANSPORT PLAN:

Air Transport: (Agency Aircraft Preferred)

<input type="checkbox"/> Helispot	<input type="checkbox"/> Short-haul/Hoist	<input type="checkbox"/> Life Flight	<input type="checkbox"/> Other
-----------------------------------	---	--------------------------------------	--------------------------------

Ground Transport:

<input type="checkbox"/> Self-Extract	<input type="checkbox"/> Carry-Out	<input type="checkbox"/> Ambulance	<input type="checkbox"/> Other
---------------------------------------	------------------------------------	------------------------------------	--------------------------------

6. ADDITIONAL RESOURCE/EQUIPMENT NEEDS:

<input type="checkbox"/> Paramedic/EMT(s)	<input type="checkbox"/> Crew(s)	<input type="checkbox"/> SKED/Backboard/C-Collar
<input type="checkbox"/> Burn Sheet(s)	<input type="checkbox"/> Oxygen	<input type="checkbox"/> Trauma Bag
<input type="checkbox"/> Medication(s)	<input type="checkbox"/> IV/Fluid(s)	<input type="checkbox"/> Cardiac Monitor/AED
<input type="checkbox"/> Other (i.e. splints, rope rescue, wheeled litter)		

7. COMMUNICATIONS:

Function	Channel Name/Number	Receive (Rx)	Tone/NAC *	Transmit (Tx)	Tone/NAC *
<i>Ex: Command</i>	<i>Forest Rpt, Ch. 2</i>	<i>168.3250</i>	<i>110.9</i>	<i>171.4325</i>	<i>110.9</i>
COMMAND					
AIR-TO-GRND					
TACTICAL					

*(NAC for digital radio system)

8. EVACUATION LOCATION:

Lat/Long (Datum WGS84) <i>EX: N 40 42.45' x W 123 03.24'</i>	
Patient's ETA to Evacuation Location:	
Helispot/Extraction Size and Hazards:	

9. CONTINGENCY:

Considerations: <i>If primary options fail, what actions can be implemented in conjunction with primary evacuation method? Be thinking ahead...</i>	REMEMBER: Confirm ETA's of resources ordered Act according to your level of training Be Alert. Keep Calm. Think Clearly. Act Decisively.
--	--

Clark Fork Complex

Incident within an Incident Emergency Action Plan

In the case of a serious accident requiring patient transport to a medical facility:

- The closest ranking Operations Leader (i.e. Division Supervisor) at the accident scene will take charge and be the Point of Contact (POC).
- Mobilize the closest paramedic/EMT to the scene by ground or air to treat the patient(s) and package for transport.
- Use the Medical Plan ICS 206WF and Incident Medical Report Form (Nine Line) in the IAP to collect and document patient information, communicate with ICP Communications and plan for two types of transport (ground and air).
- Operations Section Chief (Line or Plans) will direct medical emergency response from ICP or on-scene.
- Upon notification of a serious accident, the Incident Commander, Safety Officer, Operations Section Chief (Plans), Air Support Group Supervisor and Medical Unit Leader will report to the ICP Communications.
- Incident Communications will notify Coeur d' Alene Interagency Dispatch Center (CDC) (208-772-3283) and coordinate patient transportation.
- All other Command and General Staff will go to ICP communications to monitor the situation and be available if needed to assist.
- Incident Radio traffic will be monitored 24 hours a day at the Clark Fork ICP.

Approved by: _____ Incident Commander

Date: _____

C. R. J.
8/20/15

INCIDENT RADIO COMMUNICATIONS PLAN	1. Incident Name	2. Date/ Time Prepared	3. Operational Period Date/Time
---	------------------	------------------------	---------------------------------

4. Basic Radio Channel Utilization
Mode: W=Wideband Analog, N=Narrowband Analog, D=Digital, M=Mixed

Channel	Function	RX:	Frequency	Tone	Mode	Assignment	Remarks
1		TX:					
2		TX:					
3		TX:					
4		TX:					
5		TX:					
6		TX:					
7		TX:					
8		TX:					
9		TX:					
10		TX:					
11		TX:					
12		TX:					
13		TX:					
14		TX:					
15		TX:					
16		TX:					

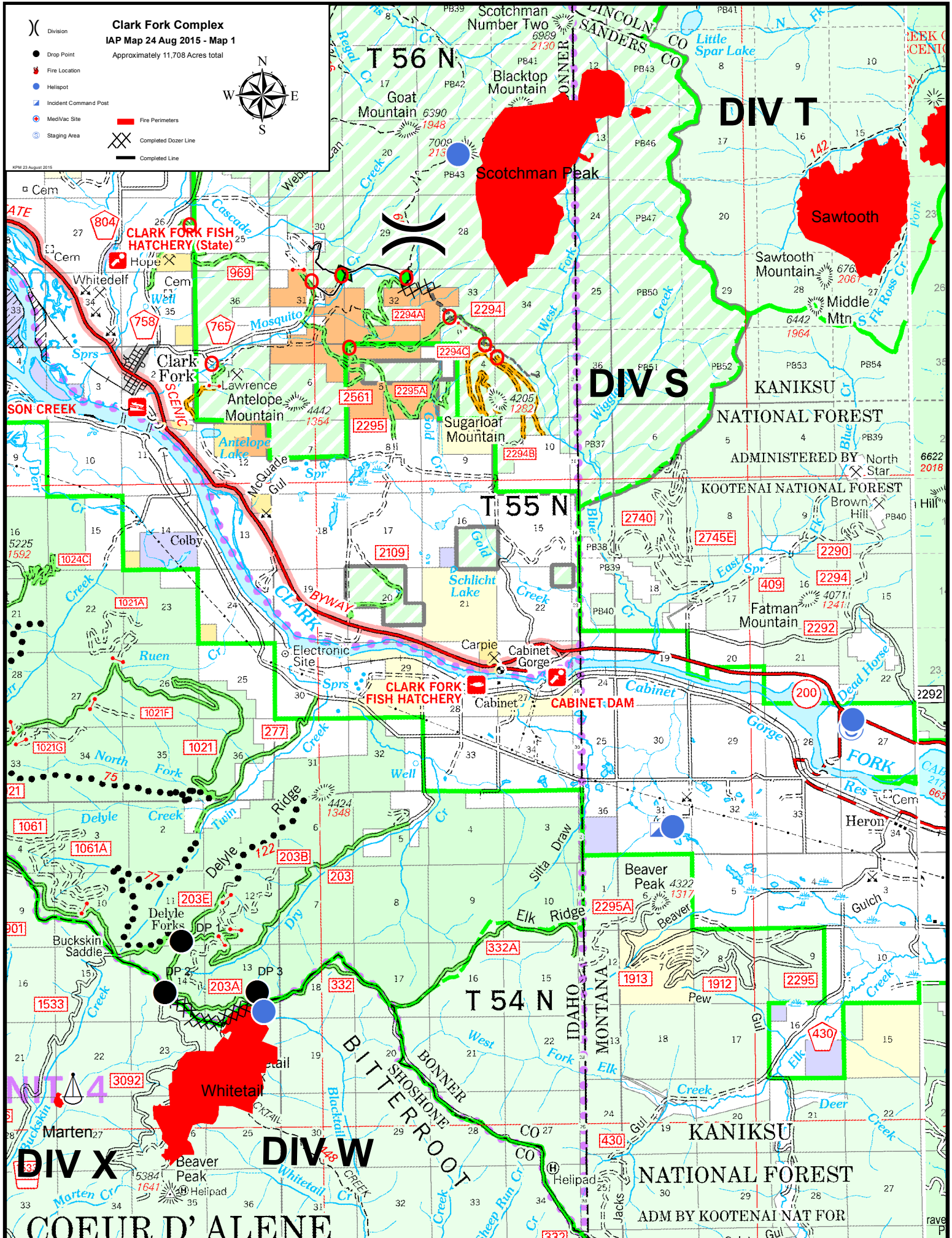
5. Prepared by (Communications Unit)

CLARK FORK COMPLEX PHONE LIST

Name	Title	Office	Cell
Christine Dawe	Clark Fork Agency Administrator		(406) 370-8865
John Carlson	KNF Agency Representative	(406) 837-7634	
Celeste Hancock	Dispatch Center Manager C'dA	(208) 762-6904	(208) 659-1346
Heather Good	Incident Business Manager IPNF	(208) 983-4096	(208) 451-4207
Terri Tangen	Incident Business Manager KNF		
Mike Behrens	IPNF Fire Staff	(208) 659-1392	(208) 659-1392
Chad Hudson	Couer d'Alene RD		(208) 661-9119
Tom Fleer	IDL- Area Manager Pend Orielle	(208) 265-5104	(208) 610-3744
Shawn Hicks	IDL Fire Warden Pend Orielle	(208) 263-5104	(208) 304-4218
Sam Gibbons	Couer d'Alene RD DFMO	(208) 660-5547	
Erick Walker	Sand Point District Ranger		(208) 290-6698
Carolyn Blatz	KNF Helibase	(406) 283-7865	
Lydia Allen	Resource Advisor		(208) 215-9701
Tom Rummel	Sanders Co Sheriff	(406) 827-3584 ext 3	
Bill Naegeli	Sanders Co Emergency Management	(406) 827-6955	(406) 827-2227
Clark Fork Fire Rescue		(208) 266-1377	
Search and Rescue	Rocky Mountain Response	(406) 529-9767	
Bob Howard	Bonner Co Emergency Management	(208) 265-8867	(208) 255-6901
Lincoln Co Emergency Mgt		(406) 293-6295	

CLARK FORK COMPLEX ICP @ AMBER BEAR INN

FAX:	(406) 847-9971	
COMMO:	(406) 847-9976	
FINANCE	(406) 847-8627	Finance phone may be answered by Amber Bear Inn staff, ask for Finance
ORDERING:	(406) 847-9975	
PIO:	(406) 847-9974	
PLANS:	(406) 847-9972	
SAFETY/OPS:	(406) 847-9973	

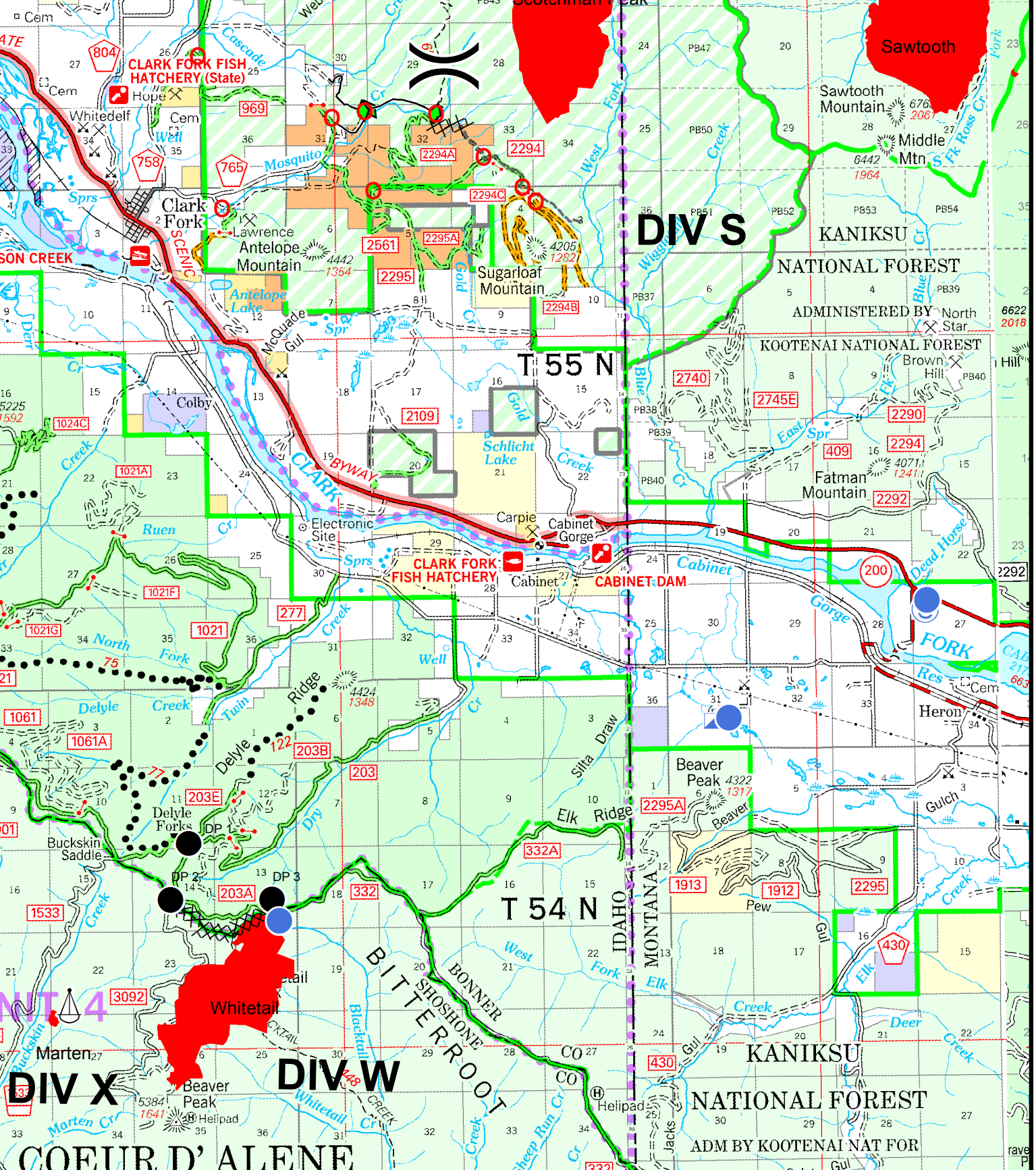


Clark Fork Complex
IAP Map 24 Aug 2015 - Map 1
Approximately 11,708 Acres total



- (X) Division
- Drop Point
- Fire Location
- Helipad
- Incident Command Post
- Med/Vac Site
- Staging Area
- Fire Perimeters
- Completed Dozer Line
- Completed Line

KPM 23 August 2015



Clark Fork Complex
IAP Map 24 Aug 2015 - Map 2
 Approximately 11,708 Acres total

- Division
- Drop Point
- Fire Location
- Helispot
- Incident Command Post
- Med/Vac Site
- Staging Area
- Fire Perimeters
- Completed Dozer Line
- Completed Line

