



Clark Fork Complex Incident Action Plan Tuesday, August 25, 2015

Day 0600-2000 PDT

Night 1800-0800 PDT

ID-IPF-000923

P1J10X (0104)



CHAINSAW SAFETY



Chainsaw safety is every saw operator's job.

Always wear proper P.P.E. when handling or working around chainsaws.

- Eye protection- approved goggles or safety glasses (no sunglasses)
- Chainsaw Chaps- proper size and length
- Gloves-proper size
- Long sleeve shirt-no loose sleeves
- Leather boots-no loose boot laces Take the time to inspect the chainsaw before operating the saw.

Check the chain and bar- Sharpness of chain, Bar seated correctly

- Check the bolts and screws all around the saw- no missing screws or bolts
- Check the casing of the saw- no cracked or missing plastic

Make sure you're aware of your surroundings while operating the chainsaw.

- Check the chain and bar- Sharpness of chain, Bar seated correctly
- Check the bolts and screws all around the saw- no missing screws or bolts
- Check the casing of the saw- no cracked or missing plastic

Make sure you're aware of your surroundings while operating the chainsaw.

- Look for people working in your area- advise all personnel you're operating the saw.
- Look for any snags or hazards in your area- look up for power lines, widow makers, etc.
- Make sure you always have a spotter or swamper to use for communications.
- Always watch your footing while operating the saw- loose, rocky, steep terrain can cause you to slip while the chainsaw is running.

Always make sure you are comfortable doing the task at hand.

- Proper training for personnel running saws.
- While falling trees know your escape route.
- If you are not comfortable falling the tree walk away. Notify your supervisor and mitigate the safety issues or turn down the assignment.

INCIDENT OBJECTIVES	1. Incident Name Clark Fork Complex	2. Date 08/24/15	3. Time 1800												
4. Operational Period: 08/25/15 Day: 0600-2000 PDT Night: 1800-0800 PDT															
<p>5. General Control Objectives for the Incident (include alternatives)</p> <p>Strategy Utilize a combination of confine/contain and point protection strategies to protect identified Values at Risk, given resources available.</p> <p>Incident Objectives</p> <ol style="list-style-type: none"> 1. Firefighter, aviation and public safety is the highest priority. Use sound risk management and hazard mitigation processes that weigh probability of success against human life exposure for EVERY management action taken. 2. Minimize threats/loss to all identified values including private property; public and private improvements; electronic and communication facilities; T&E species; watershed, riparian and wilderness areas; archeological and historical sites. 3. Monitor current area, road and trail closures and provide recommendations to modify closures as warranted to ensure public safety. 4. Create and implement a Long Term Plan in coordination with the Forest(s) that protects Values at Risk, emphasizes firefighter and public safety and is commensurate with available resources. 5. Provide accurate and timely information to agencies, stakeholders and the public, through meetings, news releases, website updates, reports and personal contacts. 6. Keep costs commensurate with resource objectives through regular and ongoing cost analyses. 7. Coordinate initial attack response within the TFR area on the Idaho Panhandle and Kootenai National Forests. <p>Incident Requirements</p> <ol style="list-style-type: none"> 1. Minimize firefighter exposure in areas of standing dead timber throughout the fire areas. 2. Coordinate with the Agency Administrator or their representative when considering dozer line construction. 3. As can be accomplished safely, use minimum impact suppression tactics to maintain wilderness character and protect resources. Complete documentation of all intrusions (chainsaw use, pump use, helicopter landings/bucket drops) in WSAs. 4. All incoming crews, equipment, and vehicles must utilize a weed wash to prevent the introduction of invasive species. In addition to the equipment, crews will remove off-site soil and organic debris. All water delivery equipment will be cleaned prior to use and water sources must be approved by READS prior to cross-use. 5. All food and food waste must be stored in bear proof containers. All fire management activities will follow most recent Interagency Grizzly Bear Guidelines. 6. Maintain and enhance working relationships with partners, cooperators and stakeholders. 7. Coordinate with READS on the rehabilitation of areas impacted by fire management operations. 															
6. Weather Forecast for Period See Attached Weather Forecast															
<p>7. General Safety Message:</p> <p>Maintain situational awareness and utilize the Risk Management Process (refer to page 1 of the Incident Response Pocket Guide).</p>															
<p>8. Attachments (mark if attached)</p> <table border="0"> <tr> <td><input checked="" type="checkbox"/> Organization List - ICS 203</td> <td><input checked="" type="checkbox"/> Weather Forecast</td> <td><input checked="" type="checkbox"/> Safety Message</td> </tr> <tr> <td><input checked="" type="checkbox"/> Div. Assignment Lists - ICS 204</td> <td><input checked="" type="checkbox"/> Fire Behavior Forecast</td> <td></td> </tr> <tr> <td><input checked="" type="checkbox"/> Communications Plan - ICS 205</td> <td><input checked="" type="checkbox"/> Incident Map</td> <td><input checked="" type="checkbox"/> Unit Log – ICS 214</td> </tr> <tr> <td><input checked="" type="checkbox"/> Medical Plan - ICS 206</td> <td><input checked="" type="checkbox"/> Air Operations– ICS 220</td> <td></td> </tr> </table>				<input checked="" type="checkbox"/> Organization List - ICS 203	<input checked="" type="checkbox"/> Weather Forecast	<input checked="" type="checkbox"/> Safety Message	<input checked="" type="checkbox"/> Div. Assignment Lists - ICS 204	<input checked="" type="checkbox"/> Fire Behavior Forecast		<input checked="" type="checkbox"/> Communications Plan - ICS 205	<input checked="" type="checkbox"/> Incident Map	<input checked="" type="checkbox"/> Unit Log – ICS 214	<input checked="" type="checkbox"/> Medical Plan - ICS 206	<input checked="" type="checkbox"/> Air Operations– ICS 220	
<input checked="" type="checkbox"/> Organization List - ICS 203	<input checked="" type="checkbox"/> Weather Forecast	<input checked="" type="checkbox"/> Safety Message													
<input checked="" type="checkbox"/> Div. Assignment Lists - ICS 204	<input checked="" type="checkbox"/> Fire Behavior Forecast														
<input checked="" type="checkbox"/> Communications Plan - ICS 205	<input checked="" type="checkbox"/> Incident Map	<input checked="" type="checkbox"/> Unit Log – ICS 214													
<input checked="" type="checkbox"/> Medical Plan - ICS 206	<input checked="" type="checkbox"/> Air Operations– ICS 220														
9. Prepared by (Planning Section Chief) Al King		9. Approved by (Incident Commander Trainee) Diane Hutton													

ORGANIZATIONAL STRUCTURE CHART		9. Operations Section	
1. Incident Name Clark Fork Complex		Chiefs	Jeff Knudson (9/2)
			Joe Sampson (9/2)
2. Date 08/25/2015			
4. Operational Periods: DAY 0600-2000 Day PDT NIGHT 1800-0800 PDT			
5. Incident Commander and Staff		DIV A	Adam Carr (8/25)
Incident Commander	Diane Hutton (9/2) Craig Glazier (t) (9/2)	DIV Z	Harold Sutherland
Safety Officer	Chris Casey(9/2) , Dennis Talbert (9/2), George Johnson (t) (9/2)	DIV Y	Kevin Smith (9/2)
Information Officer	Bob MacGregor (9/2), Glenda Scott (9/2), Nan Stinson, Peri Suenram (9/6)	DIV S	
6. Tribal and Agency Representatives			Cody Montgomery (t) (9/2)
Agency	Name	DIV W	Eric Morgan 9/2
USFS Agency Administrator	Christine Dawe		David Wilkins (8/27)
KNF Agency Rep	John Carlson	DIV T	Danny Lemeer (8/25)
IDL Area Manager	Tom Flear	DIV X	Ed Lynn
READ	Lydia Allen (9/4)	Night Shift	Joel Sather
7. Planning Section			
Chief	Al King (9/2)		
Resources Unit	Jode Boyles Briggs (9/2)		
Status Check In	Mary Greenwood (8/31), Jennifer Burnham (9/4)		
Computer Technical	Chad Wulf (9/2)		
GIS Specialist	Ray Backstrom (9/2), Molly Purnell (9/4)		
Fire Behavior	Risa Lange-Navarro (9/2)		
GSAN	Jon Rieck (9/2)		
LTAN	Mary Taber (8/30), Diane Abendroth (t) (8/27)		
SITL	Vicki Stephens (8/25)	A. Air Operations Branch	
SOPL	Paul Swenson (t) (8/27), Stu Hoyt (9/6)	Branch Director	
IMET	Scott Carpenter (9/4)	Air Attack Supervisor	
8. Logistics Section		Helibase Manager	
Chief	Russ Riebe (9/2), Bill Lauer (9/2)	Air Support Supervisor	Scott Plue (9/7), Steve Croy (t) (9/4)
Ordering Manager	Mary Ann Hamilton (9/2)	Helicopter Coordinator	
Facilities	Adam Fisher (9/2)	Air Tanker Coordinator	
Equipment Manager	Jeremiah Greene (9/3)	10. Finance	
Communications Unit	Todd Orr (9/2), Jim Olivarez (9/2), Chris Gentili (9/6)	Chief	Joyce Anderson (9/2)
Medical Unit	Linda Barbee (9/2), Pat Burroughs (8/27)	Deputy	
Base Camp Manager	Kyler McCarrell (9/2)	Time Unit	Janis Bouma (t) (9/2)
Supply Unit Leader	Dennis Cameron (9/2)	EQTR/PTRC	Carol Harwood (t) (8/27)
Cabinet Spike Logistics	Mike Justus (8/30)	Compensation/Claims	
Cabinet Spike Ordering	Perry Stebbins (8/25)	Cost Unit	Kevin O.Brien (9/3)
Prepared by: Jode Boyles Briggs RESL			



Clark Fork Complex Weather Forecast



FORECAST NO: 04 **NAME OF FIRE:** Clark Fork Complex
PREDICTION FOR: DAY SHIFT **UNIT:** Idaho Panhandle National Forest
SHIFT DATE: Tuesday, August 25, 2015 **SIGNED:**

TIME AND DATE **Incident Meteorologist**
FORECAST ISSUED: 2030 Monday, August 24, 2015 **Scott J. Carpenter**

WEATHER DISCUSSION:

Red flag warning for the potential for widely scattered dry thunderstorms with gusty and erratic winds continues through 0800. Then skies will generally be partly cloudy and smoke will continue to limit visibility across the complex through much of the day again. Expect winds to be lighter, with temperatures and relative humidity values around the same as Monday.

****RED FLAG WARNING FOR WIDELY SCATTERED DRY THUNDERSTORMS THROUGH 0800****

WEATHER FORECAST: Partly cloudy with widely scattered dry thunderstorms through 0800. Then mostly sunny, hot and unstable in the lower levels. Continued low visibility in smoke.

HIGH TEMPERATURES: 2300-4500 ft. 80-89° (Around the same)
4500-6000 ft. 72-80°

MINIMUM HUMIDITY: 2300-4500 ft 14-19% (Around the same)
4500-6000 ft 18-24%

20 FT WINDS:

SHELTERED AREAS Terrain driven 4-6 mph with gusts to 10 mph after 1300.
RIDGETOP/UNSHeltered AREAS: SW 8-12 mph with gusts to around 15 mph.

HAINES INDEX (High Level): 3 (Very Low)

CWR (>0.10 Inch): Less than 10%

LAL: 6 til 0800, then 1

INVERSIONS/MIXING HEIGHT: Inversion increasing to around 5000 ft MSL for slightly improved visibility around 1300 for Division S, X and W. Improved visibility not expected until after 1500 for Divisions Z, Y. Divisions A and T will likely not see much improvement in visibility.

OUTLOOK

TUESDAY NIGHT: Low visibility due to smoke. Low temperatures 48-52°F at low levels, 58-64°F at higher levels. RH recovery to 60-70% at low levels, and 30-40% at higher levels. 20 ft. Winds downslope/downvalley 4-8 mph, with ridgetop winds WSW 10 mph. Inversion depth increasing to around 4000 feet MSL overnight.

WEDNESDAY AND WEDNESDAY NIGHT: Mostly clear early, becoming partly cloudy after 1200. Low visibility due to smoke. 10% Chance for isolated, mainly dry, thunderstorms after 1800. High Temperatures 82-90°F. Minimum RH 14-22%. Low Temperatures 54-60°F. Maximum RH 50-65%. 20 ft. Winds terrain driven 3-5 mph with gusts to 10 mph, with SW 10 mph at the ridgetops.

THURSDAY AND THURSDAY NIGHT: Partly cloudy after 1200. Low visibility due to smoke. A 20% chance of showers or isolated thunderstorms after 1400. High Temperatures 78-88°F. Minimum RH 18-26%. Low Temperatures 54-60°F. Maximum RH 45-70%. 20 ft. Winds terrain driven 5-8 mph with gusts to 15 mph after 1400. SW 13-18 mph with gusts to 25 mph at ridgetops.

FIRE BEHAVIOR FORECAST

FORECAST NUMBER: #5	TYPE OF FIRE: Wildland Fires
FIRE NAME: Clark Fork Complex	OPERATIONAL PERIOD: Day 08/25/15
DATE ISSUED: 08/24/15	TIME ISSUED: 2035 hrs
UNIT: Sandpoint RD/Idaho Panhandle NF/ID & Cabinet RD/Kootenai NF/MT	SIGNED: Risa Lange-Navarro, FBAN <i>/s/ Risa Lange-Navarro</i>

INPUTS

WEATHER SUMMARY: Red Flag Warning for Scattered Dry Thunderstorms 8/24 2200hr to 8/25 0800hr PDT
See Attached Spot Weather Forecast for further information.
North ID/Southern Mtns ERC **Observed** for 8/24/15 **Missing**
Kootenai NF ERC **Observed** for 8/24/15 **62**, 90th percentile is 61

OUTPUTS

FIRE BEHAVIOR

GENERAL:

- Available fuels include moose moss, lichen, beargrass, some brush, Lodgepole pine, Whitebark pine, Subalpine fir, White fir, Douglas-fir, Western Larch, Ponderosa pine, Western Red Cedar and Western Hemlock. Standing dead & snags with jackpots of heavy dead/downed and/or rotten fuels and snags are numerous. Marsh & valley bottoms burning readily and not a barrier. Fuel model 2, 8, 9 & 10. Fuels are extremely dry for this time of year and burning as if it was mid-September. Estimated 1000 hrs fuel moistures 10-13% & live fuel moisture 100%.
- Topography consists of steep, rocky drainages along Bull River & Clark Fork River with flat valley bottoms.
- Main fire behavior has surface fire (head, backing, flanking, creeping & smoldering), single/group torching trees and short-duration crown runs. Rollouts common with fire burning back upslope. Intensely burning heavy fuel jackpots is igniting tree moss/other ladder fuels torching out and spotting. Spotting distance potential up to 0.2 miles, expect further distance if sustained strong winds or thunderstorm winds occur. Snags & fire weakened trees falling down. Reburn potential is high.
- Watch for alignment of slope, winds and fuels for most active fire behavior. This is especially critical during thunderstorm downdrafts and indrafts.
- Burn period has been from 1000 to 2030 hrs with the main peak hours from 1930-2030 hrs for Bull River fires, 1400-1800 hrs for Whitetail and Scotchman fires.
- Probability of ignition about +/-84% on Unshaded South aspects with Fine Dead Fuel Moisture 3%.
- **Develop trigger points for your disengagement BEFORE fire behavior threatens your safety.**

SPECIFIC: Ensure lookouts are in a good safe spot where they can observe the fire activity/weather. Take hourly weather observations & bring them to Clark Fork ICP at end of shift. If smoky conditions exist, the following fire behavior will be moderated until heating from direct sunlight occurs.

Div A/I/Z: Fire continues to spread on all perimeters unchecked by suppression activities with head, flanking & backing fire. The southwest corner is working its way downslope in Blacktail Cr. Spread downcanyon on the east side continues toward the Pillick trail. Expect jackpots of heavy dead/downed fuels to continue burning; single/group tree torching & spotting. Expect higher chances for short-duration crown runs with predicted gusty winds. Burnout opportunities along the dozer line/WUI early prior to gusty winds. Rates of spread: head fire <18 ch/hr, flanking <5 ch/hr, backing <5 ch/hr; Flame Lengths: <9 ft. Spotting up to 0.2 mile. Watch for spots in areas where the smoke column has lain over yesterday and during the night.

Div S: Backing fire spread on the southwest/south sides and burnout of jackpots of heavy dead/downed fuels to continue; possible single tree torching. Rates of spread: Backing <4 ch/hr; Flame Lengths: <8 ft. Watch for spots in areas where the smoke column has lain over downslope during the evening hours.

Div T: Fire continues to spread predominately upslope toward Sawtooth Mountain up Ross Cr as well as the spot to the northeast toward Ross Pt. Fire behavior that can be expected is burning jackpots of heavy dead/downed fuels; single/group tree torching & spotting. Expect higher chances for short-duration crown runs with predicted gusty winds. Rollouts common with upslope runs following up. Rates of spread: head fire <18 ch/hr, backing <5 ch/hr; Flame Lengths: <11 ft. Short range spotting up to 0.2 mile with high possibility of a spot to the north over Ross Cr. Watch for spots in areas where the smoke column has lain over yesterday and during the evening.

Div W: Spread down on both sides of the ridge between Whitetail Peak and Beaver Peak with backing fire and to the east toward the head of Blacktail Cr and off the south end toward Beaver Peak will continue. Regeneration units tend to cause the fire spread to hang-up, especially on the southwest side. Expect jackpots of heavy dead/downed fuels to continue burning; single/group tree torching & spotting. Expect higher chances for short-duration crown runs with predicted gusty winds. Burnout opportunities along the 332 road east of DP #3 later in the day to take advantage of sheltering from winds. Rates of spread: head fire <12 ch/hr, backing <4 ch/hr; Flame Lengths: <7 ft. Spotting up to ¼ mile. Watch for spots in areas where the smoke column has lain over to the northeast during the day and downslope during the night. Be aware of the fire in Div X which is to the southwest, below and downcanyon from your fire.

Div X: As containment & mop-up occur, fire behavior will continue to be predominately creeping & smoldering in the interior before early afternoon, then open flame along the perimeter in areas not mopped-up until shadowed out in the evening. If fire behavior picks up with gusty winds, expect fire to have rates of spread: head fire <8 ch/hr timber, backing <4 ch/hr, flame lengths <6 ft. Watch for spots in areas where the smoke column has lain over yesterday & during the evening.

Div Y: Spread continues on all sides with head, flanking & backing fire with predominant spread into Basin Cr and downslope toward the Bull River. Expect jackpots of heavy dead/downed fuels to continue burning; single/group tree torching & spotting. Expect higher chances for short-duration crown runs with predicted lower RHs and higher temperatures. Rates of spread: head fire <18 ch/hr, flanking <5 ch/hr, backing <4 ch/hr; Flame Lengths: <10 ft. Spotting up to 0.2 mile. Watch for spots in areas where the smoke column has lain over yesterday and downslope overnight.

Night Operations: See the above Division breakout above for information on your location throughout the night. Most likely see activity in any thermal belts that form overnight with backing fire and jackpots burning out. Also spots & slopovers have been popping up along firelines in Div A/Z recently so watch the areas where the smoke has started to lay over the firelines with downslope/downcanyon winds. Be aware of smoky conditions from the day's fire activity which may obscure your vantage points.

AIR OPERATIONS: Look for smoky conditions to mix out after 1300 hrs, pesky gusty winds again predicted for the afternoon.

SAFETY

So possible dry thunderstorms until 0800 hrs today and gusty winds for the afternoon...wonder what Standard Fire Order covers that?...How about **#1 Keep informed on fire weather conditions and forecasts.** Remember updrafts and downdraft winds from thunderstorms can cause fires to spread in any direction so the fire you left yesterday may have moved overnight and compromised your escape routes and safety zones. Today the gusty winds may test your firelines and burnout operations. Take good weather observations and relay that information to surrounding crews...it's the neighborly thing to do.

PLEASE GIVE FEEDBACK, it's greatly appreciated!

ASSIGNMENT LIST			1. Branch		2. Division/Group	
					A	
3. Incident Name			4. Operational Period			
Clark Fork Complex			Date: 08/25/2015		Time: 0600-2000	
5. Operations Personnel						
Operations Chief		Jeff Knudson, Joe Sampson		Division/Group Supervisor		Adam Carr (8/25), David Tingley (t) (9/6)
Branch Director				Air Support Group Supervisor		Scott Plue (9/7), Steve Croy (t) (9/04)
6. Resources Assigned This Period						
Strike Team/Task Force/ Resource Designator	Last Shift	Leader	No. Pers.	Trans. Needed	Drop Off PT./Time	Pick Up PT./Time
STEN		Gilham 9/2, Krick (t) 9/2	2	N	DP 21 0700	Cabinet Spike 1930
LEO		JD Griffel	1	N	DP 21 0700	Cabinet Spike 1930
READ	8/30	Mark Mason	1	N	DP 21 0700	Cabinet Spike 1930
EMT	8/30	T Hightower/R. Myers	2	N	DP 21 0700	Cabinet Spike 1930
SAFETY	8/25	Pat Flanary	1	N	DP 21 0700	Cabinet Spike 1930
Geronimo IHC	8/31	Julius Hostetler	20	N	DP 21 0700	Cabinet Spike 1930
Falling Module O-31	9/6	Westphal, Berryhill	2	N	DP 21 0700	ICP 1930
Falling Module O-30	8/26	Stutzman, Smith	2	N	DP 21 0700	ICP 1930
T6 ENG Brush 104		Bledsoe	3	N	DP 21 0700	Cabinet Spike 1930
T6 ENG E-6605	8/27	Jason Snellman	4	N	DP 21 0700	Cabinet Spike 1930
T6 ENG E-472		Jessica Bier	4	N	DP 21 0700	Cabinet Spike 1930
T6 ENG Trout Creek Brush #134		RURAL	2	N	DP 21 0700	Cabinet Spike 1930
Noxon WT-3		RURAL	1	N	DP 21 0700	Cabinet Spike 1930
Aqua Enterprises WT		M. McNew	1	N	DP 21 0700	Cabinet Spike 1930
Jensen Excavator 2		Duane Jensen	1	N	DP 21 0700	Cabinet Spike 1930
Ibex Excavator		Eric Weare	1	N	DP 21 0700	Cabinet Spike 1930
Ibex Dozer		Mickey Weare	1		DP 21 0700	Cabinet Spike 1930
Jensen Dozer		Bill Jensen	1	N	DP 21 0700	Cabinet Spike 1930
Jensen Skidgine		Joe Brodmarkle	1	N	DP 21 0700	Cabinet Spike 1930
7. Control Operations						
Continue improvement along Dry Creek and private property. Hold fire south of Dry Creek Road West of private property.						
8. Special Instructions						
Take hourly weather observations and bring to ICP at end of shift.						
Function	Frequency - RX	Frequency - TX	Tone	Channel	Comments	
Command	170.4125	165.9625	141.3	7	ICP TO LINE	
Command						
Tactical	168.0500	168.0500	141.3	1		
Air to Ground	170.1125	170.1125		15		
Prepared by (RESL)		Approved by (PSC)		Date		Time
Jode Boyles Briggs				08/24/2015		2200

ASSIGNMENT LIST		1. Branch	2. Division/Group			
3. Incident Name		4. Operational Period				
Clark Fork Complex		Date: 08/25/2015		Time: 0600-2000		
5. Operations Personnel						
Operations Chief	Jeff Knudson, Joe Sampson		Division/Group Supervisor	Harold Sutherland		
Branch Director			Air Support Group Supervisor	Scott Plue (9/7), Steve Croy (t) (9/04)		
6. Resources Assigned This Period						
Strike Team/Task Force/ Resource Designator	Last Shift	Leader	No. Pers.	Trans. Needed	Drop Off PT./Time	Pick Up PT./Time
STEN (t)		Mark Wiedeman	1	N	East Fork Road 0700	Cabinet Spike 1930
HEQB		Todd Caudill	1	N	East Fork Road 0700	Cabinet Spike 1930
EMTF		F. Sperlak, M. Littler	2	N	East Fork Road 0700	Cabinet Spike 1930
LEO		JD Griffel	1	N	East Fork Road 0700	Cabinet Spike 1930
T21A Mississippi C-1	9/4	Barker, Black (t)	20	N	East Fork Road 0700	Cabinet Spike 1930
D7 District Crew		D. Otten	4	N	East Fork Road 0700	Cabinet Spike 1930
T6 ENG Thompson Falls 141			3	N	East Fork Road 0700	Cabinet Spike 1930
T6 ENG Nox 50		Eddie Harsh	3	N	East Fork Road 0700	Cabinet Spike 1930
ENG T6 Noxon E-114		RURAL	2	N	East Fork Road 0700	Cabinet Spike 1930
ENG T6 Bull Lake Engine #1260		Clyde Miller (RURAL)	3	N	East Fork Road 0700	Cabinet Spike 1930
DOZER E-28			1	N	East Fork Road 0700	Cabinet Spike 1930
WT Trout Creek 136		RURAL	1	N	East Fork Road 0700	Cabinet Spike 1930
Backwoods Excavator E-1		Peter Hammond	1	N	East Fork Road 0700	Cabinet Spike 1930
Excavator E-20		Whitmarsh	2	N	East Fork Road 0700	Cabinet Spike 1930
Backwoods Bobcat		Levi Klaus	1	N	East Fork Road 0700	Cabinet Spike 1930
7. Control Operations						
Hold established lines from A/Z Division break to West Pillick Road. Look for opportunities to use Pillick Trail as holding line on East flank of Napoleon Fire.						
8. Special Instructions						
Take hourly weather observations and bring to ICP at end of shift.						
Function	Frequency - RX	Frequency - TX	Tone	Channel	Comments	
Command	170.4125	165.9625	141.3	7		
Command						
Tactical	168.2000	168.2000	141.3	2		
Air to Ground	170.1125	170.1125		15		
Prepared by (RESL) Jode Boyles Briggs		Approved by (PSC)		Date 08/24/2015	Time 2200	

ASSIGNMENT LIST			1. Branch		2. Division/Group		
3. Incident Name			4. Operational Period				
Clark Fork Complex			Date: 08/25/2015		Time: 0600-2000		
5. Operations Personnel							
Operations Chief		Jeff Knudson, Joe Sampson		Division/Group Supervisor		Kevin Smith, Cody Montgomery (t)	
Branch Director				Air Support Group Supervisor		Scott Plue (9/7), Steve Croy (t) (9/04)	
6. Resources Assigned This Period							
Strike Team/Task Force/ Resource Designator	Last Shift	Leader	No. Pers.	Trans. Needed	Drop Off PT./Time	Pick Up PT./Time	
FOBS	8/29	Ohlwieler	2	N	Hwy 56/200 0700	ICP 1930	
T6 ENG Rocky Mtn B36 E-75	9/7	Robert Nelson	3	N	Hwy 56/200 0700	ICP 1930	
T6 ENG Fisher Rv. Red		Jason McAllister	2	N	Hwy 56/200 0700	ICP 1930	
Jensen Excavator		Quentin Jensen	1	N	Hwy 56/200 0700	Cabinet Spike 1930	
7. Control Operations							
<p>Implement structure protection on threatened values. Work with Sheriff Department on notification plan in the event of evacuation. Monitor movement of Government Fire.</p>							
8. Special Instructions							
<p>Take hourly weather observations and bring to ICP at end of shift.</p>							
Function	Frequency - RX	Frequency - TX	Tone	Channel	Comments		
Command	170.4125	165.9625	141.3	7			
Command							
Tactical	168.6000	168.6000	141.3	3			
Air to Ground	170.1125	170.1125		15			
Prepared by (RESL)		Approved by (PSC)		Date		Time	
Jode Boyles Briggs				08/24/2015		2200	

ASSIGNMENT LIST		1. Branch		2. Division/Group		
3. Incident Name		4. Operational Period				
Clark Fork Complex		Date: 08/25/2015		Time: 0600-2000		
5. Operations Personnel						
Operations Chief	Jeff Knudson, Joe Sampson		Division/Group Supervisor			
Branch Director			Air Support Group Supervisor		Scott Plue (9/7), Steve Croy (t) (9/04)	
6. Resources Assigned This Period						
Strike Team/Task Force/ Resource Designator	Last Shift	Leader	No. Pers.	Trans. Needed	Drop Off PT./Time	Pick Up PT./Time
7. Control Operations						
UNSTAFFED						
8. Special Instructions						
Function	Frequency - RX	Frequency - TX	Tone	Channel	Comments	
Command	170.4125	165.9625	141.3	7		
Command						
Tactical	168.6000	168.6000	141.3	3		
Air to Ground	162.6125	162.6125		14		
Prepared by (RESL)		Approved by (PSC)		Date		Time
Jode Boyles Briggs				08/24/2015		2200

ASSIGNMENT LIST			1. Branch		2. Division/Group		
3. Incident Name			4. Operational Period				
Clark Fork Complex			Date: 08/25/2015		Time: 0600-2000		
5. Operations Personnel							
Operations Chief		Jeff Knudson, Joe Sampson		Division/Group Supervisor		Eric Morgan, David Wilkins (t) 8/27	
Branch Director				Air Support Group Supervisor		Scott Plue (9/7), Steve Croy (t) (9/04)	
6. Resources Assigned This Period							
Strike Team/Task Force/ Resource Designator	Last Shift	Leader	No. Pers.	Trans. Needed	Drop Off PT./Time	Pick Up PT./Time	
TFLD O-1.7	8/27	Reser	1	N	DP 1 0700	ICP 1930	
HEQB		Bill Case, Dennis Gillmer (t)	2	N	DP 1 0700	ICP 1930	
TFLD		Wayne Pesch 8/27, Bryce Barth (t)	1	N	DP 1 0700	ICP 1930	
EMTF	9/4	Steven Williamson	1	N	DP 1 0700	ICP 1930	
Red Medic E 26	9/3	Rex Nielsen (EMPF)	1	N	DP 1 0700	ICP 1930	
Idaho Panhandle IHC C-5	9/1	Nipp	21	N	DP 1 0700	ICP 1930	
DOZER E-1 Wink 650K Dozer		Metzger	2	N	DP 1 0700	ICP 1930	
ENG T6 E-661		Loveless	5	N	DP 1 0700	ICP 1930	
Dozer Cat D4 E-6		Akre	2	N	DP 1 0700	ICP 1930	
Water Tender E-10	9/1	Gieser	2	N	DP 1 0700	ICP 1930	
Water Tender E-24		Swisher	1	N	DP 1 0700	ICP 1930	
Feller Buncher E-32		Evans	1	N	DP 1 0700	ICP 1930	
Feller Buncher E-34	9/5	Schnabl	2	N	DP 1 0700	ICP 1930	
T2 Skidgine E-12	9/1	Alderdice	1	N	DP 1 0700	ICP 1930	
T2 Skidgine E-13	9/1	Pittman	2	N	DP 1 0700	ICP 1930	
Skidder Fousts E-37	9/3		1	N	DP 1 0700	ICP 1930	
Skidder Fousts E-38	9/3		1	N	DP 1 0700	ICP 1930	
Price Contracting Excavator E-25		Nick Smith	1	N	DP 1 0700	ICP 1930	
7. Control Operations							
Utilize air resources and equipment to improve line along ridge.							
8. Special Instructions							
Take hourly weather observations and bring to ICP at end of shift.							
Function	Frequency - RX	Frequency - TX	Tone	Channel	Comments		
Command	170.4125	165.9625	141.3	7			
Command							
Tactical	166.7250	166.7250	141.3	4			
Air to Ground	162.6125	162.6125		14			
Prepared by (RESL)		Approved by (PSC)			Date		Time
Jode Boyles Briggs					08/24/2015		2200

ASSIGNMENT LIST			1. Branch		2. Division/Group		
3. Incident Name			4. Operational Period				
Clark Fork Complex			Date: 08/25/2015		Time: 0600-2000		
5. Operations Personnel							
Operations Chief		Jeff Knudson, Joe Sampson		Division/Group Supervisor		Danny Lemer, 8/25	
Branch Director				Air Support Group Supervisor		Scott Plue (9/7), Steve Croy (t) (9/04)	
6. Resources Assigned This Period							
Strike Team/Task Force/ Resource Designator	Last Shift	Leader	No. Pers.	Trans. Needed	Drop Off PT./Time	Pick Up PT./Time	
T6 ENG Castle Mountain	9/3	Brandon Bakken	3	N	DP 20 0700	ICP 1930	
T6 ENG Bull Lake #1230 E-58	9/5	Michael Reese	2	N	DP 20 0700	ICP 1930	
7. Control Operations							
Assess structure protection needs in Wilderness View and Bull Lake Estates . Monitor Sawtooth Fire growth.							
8. Special Instructions							
Minimize suppression impacts to lower Ross Creek RNA, Spar Springs, and Ross Creek Wild and Scenic River Corridor. Take hourly weather observations and bring to ICP at end of shift.							
Function	Frequency - RX	Frequency - TX	Tone	Channel	Comments		
Command	170.4125	165.9625	141.3	7			
Command							
Tactical	166.7750	166.7750	141.3	5			
Air to Ground	170.1125	170.1125	15				
Prepared by (RESL) Jode Boyles Briggs		Approved by (PSC)		Date 08/24/2015		Time 2200	

ASSIGNMENT LIST		1. Branch		2. Division/Group		
				X		
3. Incident Name		4. Operational Period				
Clark Fork Complex		Date: 08/25/2015		Time: 0600-2000		
5. Operations Personnel						
Operations Chief	Jeff Knudson, Joe Sampson		Division/Group Supervisor	Ed Lynn		
Branch Director			Air Support Group Supervisor	Scott Plue (9/7), Steve Croy (t) (9/04)		
6. Resources Assigned This Period						
Strike Team/Task Force/ Resource Designator	Last Shift	Leader	No. Pers.	Trans. Needed	Drop Off PT./Time	Pick Up PT./Time
Smokejumpers	8/25	Newell	8	Y	Marten Fire	Marten Fire
7. Control Operations						
Perimeter control of Marten Fire.						
8. Special Instructions						
Demob smokejumpers at end of shift 08/25/2015.						
Function	Frequency - RX	Frequency - TX	Tone	Channel	Comments	
Command	170.4125	165.9625	141.3	7		
Command						
Tactical	166.7750	166.7750	141.3	5		
Air to Ground	162.6125	162.6125				
Prepared by (RESL) Jode Boyles Briggs		Approved by (PSC)		Date 08/24/2015	Time 2200	

ASSIGNMENT LIST		1. Branch	2. Division/Group			
			NS			
3. Incident Name		4. Operational Period				
Clark Fork Complex		Date: 08/25/2015		Time: 1800-0800		
5. Operations Personnel						
Operations Chief	Jeff Knudson, Joe Sampson		Division/Group Supervisor			
Branch Director			Air Support Group Supervisor	N/A		
6. Resources Assigned This Period						
Strike Team/Task Force/ Resource Designator	Last Shift	Leader	No. Pers.	Trans. Needed	Drop Off PT./Time	Pick Up PT./Time
TFLD		Joel Sather	1	N	Highway 56/200 1900	Cabinet Spike 0700
T6 ENG E-1260 Bull Lake VFW		Jeff Drake	3	N	Highway 56/200 1900	ICP 0700
T6 ENG Bishop		Will Hughes	3	N	Highway 56/200 1900	ICP 0700
T6 ENG 621 Lake George		George Ross	2	N	Highway 56/200 1900	ICP 0700
T6 ENG 8561		John Worthington	3	N	Highway 56/200 1900	ICP 0700
T6 ENG 71		Jerry Montella	1	N	Highway 56/200 1900	Cabinet Spike 0700
WT-3, WT-6		Unstaffed /Staged				
7. Control Operations						
Patrol fires along Highway 56 and Highway 200 on Divisions A, Z, Y. As necessary notify residents of increased fire behavior approaching their homes.						
8. Special Instructions						
Take hourly weather observations and bring to ICP at end of shift.						
Function	Frequency - RX	Frequency - TX	Tone	Channel	Comments	
Command	170.4125	165.9625	141.3	7		
Command						
Tactical	166.7750	166.7750	141.3	5		
Air to Ground						
Prepared by (RESL) Jode Boyles Briggs		Approved by (PSC)		Date 08/24/2015	Time 2200	

ASSIGNMENT LIST			1. Branch		2. Division/Group		
3. Incident Name			4. Operational Period				
Clark Fork Complex			Date: 08/25/2015		Time: 0600-1930		
5. Operations Personnel							
Operations Chief		Jeff Knudson, Joe Sampson		STAM		Jeremiah Greene	
Branch Director				Air Support Group Supervisor		Scott Plue (9/7), Steve Croy (t) (9/04)	
6. Resources Assigned This Period							
Strike Team/Task Force/ Resource Designator	Last Shift	Leader	No. Pers.	Trans. Needed	Drop Off PT./Time	Pick Up PT./Time	
T3 DOZ Taylor Services E 42	9/4	Bob Taylor	1	N	Heron Staging 0700	Heron Staging 1930	
T3 DOZ Taylor and Sons E 43	9/4	Dave Taylor	1	N	Heron Staging 0700	Heron Staging 1930	
T1 Fellerbuncher Hallwood E-35	9/06	Jesse Conley	1	N	Heron Staging 0700	Heron Staging 1930	
Feller-Buncher 455 EXL E-5		Zielinski	2	N	Heron Staging 0700	Heron Staging 1930	
Wink Excavator E-8		Winkelseth	2	N	I DOT 0700	I DOT 1930	
T2 Excavator #-25 Akre Logging			1	N	I DOT 0700	I DOT 1930	
7. Control Operations							
Be prepared for line assignment, monitor Command Channel 7 on the radio.							
8. Special Instructions							
Function	Frequency - RX	Frequency - TX	Tone	Channel	Comments		
Command	170.4125	165.9625	141.3	7			
Command							
Tactical							
Air to Ground							
Prepared by (RESL)		Approved by (PSC)		Date		Time	
Jode Boyles Briggs				08/24/2015		2200	

AIR OPERATIONS SUMMARY

Prepared By: Steve Croy – ASGS(t)

08/24/2015

Prepared Time: 19:00

1. INCIDENT NAME: Clark Fork Complex	2. OPS PERIOD DATE: 08/25/2015	START TIME: 0600	END TIME: 2000	SUNRISE: 05:51 PDT 06:51 MDT	SUNSET: 19:41 PDT 20:41 MDT
3. REMARKS (Safety Notes, Hazards, Air Operations Special Equipment): - Communicate known flight hazards to your pilot: wires, towers, snags, other aircraft. - Aircraft requests will be made thru Line Operations. - AFTER Aug 15: Fed aircraft will cease tactical operations after sundown, flight after sunset shall be ferry back to base only. - Smoke & limited visibility expected in the morning & likely all day.			4. READY ALERT AIRCRAFT MEDEVAC – Contact Clark Fork Complex ICP Communication with Request.		5. TFR's: 5/7406 5nm centered Whitetail Peak A/A freq 124.650, Surface to 7000' MSL

6. PERSONNEL	NAME	PHONE #	7. FREQUENCIES	AM	FM	8. FIXED-WING- Type/ Make-Model/ N#/ Base										
ASGS	Scott Plue	208-661-6619	Idaho Air / Air	124.650		AIRTANKERS: Request thru Operations										
ASGS (t)	Steve Croy	540-230-2568	Idaho Air/Ground		162.6125	SEATS: Request thru Operations										
			Montana Air to Air	132.6750		ATGS AIRCRAFT: Request thru Operations										
			Montana Air/Ground		170.1125											
			Air Guard		168.6250 TX tone 110.9	Helispots & Dipsites:										
						<table style="width: 100%; border-collapse: collapse;"> <thead> <tr> <th style="width: 15%;">Name</th> <th style="width: 15%;">Lat</th> <th style="width: 15%;">Long</th> <th style="width: 15%;">Elev</th> <th style="width: 40%;">Comments</th> </tr> </thead> <tbody> <tr> <td>Heron Helispot</td> <td>48 04.67'</td> <td>115 58.23'</td> <td>2300'</td> <td>mowed pasture, south MT200, west of staging</td> </tr> </tbody> </table>	Name	Lat	Long	Elev	Comments	Heron Helispot	48 04.67'	115 58.23'	2300'	mowed pasture, south MT200, west of staging
Name	Lat	Long	Elev	Comments												
Heron Helispot	48 04.67'	115 58.23'	2300'	mowed pasture, south MT200, west of staging												
NOTE: Aircraft requests are placed through Coeur d'Alene Dispatch. Plan ahead for timely arrival of aircraft.																

FAA N#	T Y	MAKE/ MODEL	BASE	MGR.	AVAIL	REMARKS	FAA N#	T Y	MAKE/ MODEL	BASE	MGR.	AVAIL	REMARKS
N414 <i>KNF IA</i>	1	K-max	Libby S59	Gray	0800	Gallatin EXU	4CH	1	BV-107	Shoshone	###	0800	Ops will place order as needed.
N793HT <i>KNF IA</i>	1	CH-54 Sky-Crane	Libby S59	McQueary	0800	Cedar City EXU	9CH	1	BV-107	Shoshone	###	0800	Ops will place order as needed.
N122Z <i>KNF IA</i>	2	Bell 212HP	Libby S59	Benfatti +10	0800	Gallatin Rappel EXU	N6148U	3	Bell 407	Shoshone	###	0800	Ops will place order as needed.
N44MA <i>KNF IA</i>	3	Bell 407	Libby S59	Blaz+ 2	0800	Libby EXU							

NOTE:

10. TASK/ MISSION/ ASSIGNMENT (Type/ function includes: Air Tactical, Retardant, Recon, Personnel Transport, Bucket Operations, SAR, etc.)													
Missions: OPS, FBAN/LTAN recons; & bucket work as requested; Support Zone I.A. & fire logistics / communications													

SAFETY MESSAGE

CLARK FORK FIRES

Date: August 25, 2015

SUBJECT: Chainsaw Operations, Fuel Handling and Safety

Recently, several near misses involving leakage of chainsaw fuel, vapor lock/ tank pressurization, and fuel spray have occurred. Firefighters should remember that fuel leakage, vapor lock/tank pressurization and potential fuel spray can occur at any time when using chainsaws.

Fuel can become pressurized in any container that does not automatically vent and can spray out when pressure is released rapidly. For firefighters working near ignition sources, having fuel on your clothing or skin presents a significant hazard.

Personal Protective Equipment, even flame resistant clothing does not provide protection when fuel-soaked PPE ignites.

Discuss in Briefings these **Recommendations:**

- **Assume all gas powered equipment and fuel transport containers are pressurized.** Treat them accordingly when opening, especially near any potential ignition source. Always wear PPE.
- **When refueling, move at least 20 feet away from any potential ignition source.**
- **Let the saw cool five minutes.**
- **Turn the saw so the fuel cap is pointed away from yourself and slowly open the cap to vent away from you.**
- **If any fuel gets on your clothing, do not go back to sawing without getting fuel free clothes/PPE on. Tell your supervisor.**
- **Be careful to reseal and close the fuel cap so its closes completely and the threads do not get crossed.**
- **Chainsaw operators should discuss this and review reports associated with recent incidents to learn how to avoid similar instances. Visit <http://www.wildfirelessons.net/homeshould> view**
- **Firefighters should report future occurrences thru SAFENET.**

All chainsaw operators should view the chainsaw and fuel safety video on NIFC video channel at: <https://youtube.com/watch?v=RG9I7YkBSOg>

Chris Casey SOF2 and George Johnson SOF2 (T)

MEDICAL PLAN (ICS 206 WF)

1. Incident/Project Name		2. Operational Period			
Clark Fork Complex		Date/Time	08-25-2015	0600-2000	1800-0800
3. Ambulance Services					
Name	Complete Address	Phone & EMS Frequency	Advanced Life Support (ALS) Yes No		
Noxon Ambulance Service	Noxon, Montana	Ordered through CDC, call ICP on Command 1 for dispatch.	NO		
Clark Fork Ambulance	Clark Fork, ID	208-266-1574	YES		
Libby Volunteer Ambulance	Libby, Montana	406-293-4112	YES		
Bonner Emergency EMS	Sandpoint, Idaho	208-255-2194	YES		
4. Air Ambulance Services					
Name	Phone	Type of Aircraft & Capability			
Life Flight Network	800-232-0911	Rotor and fixed wing , ALS with night capabilities			
Alert Air Rescue	406-752-9797	Helicopter, ALS with night capabilities			
Northwest Medstar	800-5723201	Rotor and Fixed Wing, ALS with night capabilities			
5. Hospitals					
Name Complete Address	GPS Datum – WGS 84 Coordinate Standard Degrees Decimal Minutes DD° MM.MMM' N - Lat DD° MM.MMM' W - Long	Travel Time Air Gnd	Phone	Helipad Yes No	Level of Care Facility
Bonner General, 520 N 3 rd Ave, Sandpoint, ID 83864	Lat:	15 min	208-263-1441	<input checked="" type="checkbox"/>	Critical Access
	Long:	45-60 min		<input type="checkbox"/>	
Kootenai Medical 203 Lincoln Way, Coeur d' Alene.83814	Lat:	20 min	208-666-2000	<input checked="" type="checkbox"/>	Level 2 Trauma
	Long:	60-90 min		<input type="checkbox"/>	
Kalispell Regional Hospital, 310 Sunny View Lane, Kalispell, MT	Lat:		406-752-5111	<input checked="" type="checkbox"/>	Trauma Level 3
	Long:			<input type="checkbox"/>	
6. Division Branch Group		Area Location Capability			
ICP / Medical Unit	EMS Responders & Capability:	MEDL and Paramedic at night.			
	Equipment Available on Scene:	First Aid and Basic Life Support			
	Medical Emergency Channel:	Command 1			
	Ambulance to Scene	45 minutes			
	Air:	30 min			
	Approved Helispot:	yes			
	Lat:	43 03.51 N			
Long:	116 01.58 W				
Sanders County Search and Rescue ICP- 406-847-2193	EMS Responders & Capability:	2 EMTs			
	Equipment Available on Scene:	Basic Life Support			
	Medical Emergency Channel:	Command 1			
	ETA for Ambulance to Scene:				
	Air:	45 min			
	Approved Helispot:				
	Lat:	48 11.93 3 N			
Long:	115 51.687 W				
DIV A	EMS Responders & Capability:	2 EMTs			
	Equipment Available on Scene:	Basic Life Support			
	Medical Emergency Channel:	Command 1			
	ETA for Ambulance to Scene:				
	Air:	45 min			
	Approved Helispot:				
	Lat:	48 11.93 3 N			
Long:	115 51.687 W				

MEDICAL PLAN (ICS 206 WF)

DIV Z	EMS Responders & Capability:	2 EMTF
	Equipment Available on Scene:	Basic Life Support
	Medical Emergency Channel:	Command 1
	ETA for Ambulance to Scene:	
	Air:	45 min
	Lat:	48 11.93 3 N
	Long:	115 51.687 W
DIV Y	EMS Responders & Capability:	Contact Medical Control through ICP for EMS Response
	Equipment Available on Scene:	
	Medical Emergency Channel:	Command 1
	ETA for Ambulance to Scene:	
	Air:	
	Approved Helispot	Gravel Pit
	Lat:	48 2.339 N
Long:	115 50.328 W	

DIV T	EMS Responders & Capability:	Contact Medical Control through ICP for EMS response
	Equipment Available on Scene:	
	Medical Emergency Channel:	Command 1
	ETA for Ambulance to Scene:	
	Approved Helispot	DP 20
	Lat:	48 11.939 N
Long:	115 51.672 W	

DIV X	EMS Responders & Capability:	Smoke Jumpers on scene
	Equipment Available on Scene:	
	Medical Emergency Channel:	Command 1
	ETA for Ambulance to Scene:	Inaccessible by ground
	Approved Helispot	DP 2 or as identified by Jumpers at the time of emergency
	Lat:	48 1.551 N
	Long:	116 10.197 W

DIV NS	EMS Responders & Capability:	Medical will respond from ICP as needed at night
	Equipment Available on Scene:	BLS/ALS
	Medical Emergency Channel:	Command 1
	ETA for Ambulance to Scene:	
	Air:	
	Lat:	
	Long:	

7. Name & Location	Area Location Capability		
DIV S	EMS Responders & Capability:	Paramedic(Red Medic) can respond upon request of DIV/	
	Equipment Available on Scene:	BLS/ALS	
	Medical Emergency Channel:	Command 1	
	ETA for Ambulance to Scene:		
	Air:		
	Approved Helispot :	Staging	
	Lat:	48 4.575 N	
Long:	115 58.271 W		
DIV W	EMS Responders & Capability	1 EMTF (Whiskey Medic) at DP1 / 1EMPF (Red Medic) at DP 2	
	Equipment Available on Scene:	BLS/ALS	
	Medical Emergency Channel:	Command 1	
	ETA for Ambulance to Scene:		
	Air:		
	Approved Helispot:	DP 2	
	Lat:	48 9.167 N	
Long:	115 52.319 W		
8. Prepared By: MEDL	9. Date/Time	10. Reviewed By (Safety Officer)	11. Date/Time

MEDICAL PLAN (ICS 206 WF)

Patricia Burroughs MEDL	08/24/2015 2000	Chris Casey	@ 2000 hrs.
-------------------------	--------------------	-------------	-------------

Medical Incident Report

FOR ALL MEDICAL EMERGENCIES: IDENTIFY ON SCENE INCIDENT COMMANDER BY NAME AND POSITION AND ANNOUNCE "MEDICAL EMERGENCY" TO INITIATE RESPONSE FROM IMT COMMUNICATIONS/DISPATCH.

Use items one through nine to communicate situation to communications/dispatch.

1. CONTACT COMMUNICATIONS/DISPATCH

Ex: "Communications, Div. Alpha. Stand-by for Priority Medical Incident Report." (If life threatening request designated frequency be cleared for emergency traffic.)

2. INCIDENT STATUS: Provide incident summary and command structure.

Nature of Injury/Illness		<i>Describe the injury (Ex: Broken leg with bleeding)</i>
Incident Name		<i>Geographic Name + "Medical" (Ex: Trout Meadow Medical)</i>
Incident Commander		<i>Name of IC</i>
Patient Care		<i>Name of Care Provider (Ex: EMT Smith)</i>

3. INITIAL PATIENT ASSESSMENT: Complete this section for each patient. This is only a brief, initial assessment. Provide additional patient info after completing this 9 Line Report.

Number of Patients:	Male / Female	Age:	Weight:
Conscious? <input type="checkbox"/> YES <input type="checkbox"/> NO = MEDEVAC!			
Breathing? <input type="checkbox"/> YES <input type="checkbox"/> NO = MEDEVAC!			
Mechanism of Injury: <i>What caused the injury?</i>			
Lat/Long (Datum WGS84) <i>Ex: N 40° 42.45' x W 123° 03.24'</i>			

4. SEVERITY OF EMERGENCY, TRANSPORT PRIORITY

SEVERITY	TRANSPORT PRIORITY
<input type="checkbox"/> URGENT-RED Life threatening injury or illness. <i>Ex: Unconscious, difficulty breathing, bleeding severely, 2° – 3° burns more than 4 palm sizes, heat stroke, disoriented.</i>	Ambulance or MEDEVAC helicopter. Evacuation need is IMMEDIATE.
<input type="checkbox"/> PRIORITY-YELLOW Serious Injury or illness. <i>Ex: Significant trauma, not able to walk, 2° – 3° burns not more than 1-2 palm sizes.</i>	Ambulance or consider air transport if at remote location. Evacuation may be DELAYED.
<input type="checkbox"/> ROUTINE-GREEN Not a life threatening injury or illness. <i>Ex: Sprains, strains, minor heat-related illness.</i>	Non-Emergency. Evacuation considered Routine of Convenience.

5. TRANSPORT PLAN:

Air Transport: (Agency Aircraft Preferred)

<input type="checkbox"/> Helispot	<input type="checkbox"/> Short-haul/Hoist	<input type="checkbox"/> Life Flight	<input type="checkbox"/> Other
-----------------------------------	---	--------------------------------------	--------------------------------

Ground Transport:

<input type="checkbox"/> Self-Extract	<input type="checkbox"/> Carry-Out	<input type="checkbox"/> Ambulance	<input type="checkbox"/> Other
---------------------------------------	------------------------------------	------------------------------------	--------------------------------

6. ADDITIONAL RESOURCE/EQUIPMENT NEEDS:

<input type="checkbox"/> Paramedic/EMT(s)	<input type="checkbox"/> Crew(s)	<input type="checkbox"/> SKED/Backboard/C-Collar
<input type="checkbox"/> Burn Sheet(s)	<input type="checkbox"/> Oxygen	<input type="checkbox"/> Trauma Bag
<input type="checkbox"/> Medication(s)	<input type="checkbox"/> IV/Fluid(s)	<input type="checkbox"/> Cardiac Monitor/AED
<input type="checkbox"/> Other (i.e. splints, rope rescue, wheeled litter)		

7. COMMUNICATIONS:

Function	Channel Name/Number	Receive (Rx)	Tone/NAC *	Transmit (Tx)	Tone/NAC *
<i>Ex: Command</i>	<i>Forest Rpt, Ch. 2</i>	<i>168.3250</i>	<i>110.9</i>	<i>171.4325</i>	<i>110.9</i>
COMMAND					
AIR-TO-GRND					
TACTICAL					

*(NAC for digital radio system)

8. EVACUATION LOCATION:

Lat/Long (Datum WGS84) <i>EX: N 40 42.45' x W 123 03.24'</i>	
Patient's ETA to Evacuation Location:	
Helispot/Extraction Size and Hazards:	

9. CONTINGENCY:

Considerations: If primary options fail, what actions can be implemented in conjunction with primary evacuation method? Be thinking ahead...	REMEMBER: Confirm ETA's of resources ordered Act according to your level of training Be Alert. Keep Calm. Think Clearly. Act Decisively.
---	---

INCIDENT RADIO COMMUNICATIONS PLAN	1. Incident Name	2. Date/ Time Prepared	3. Operational Period Date/Time
---	------------------	------------------------	---------------------------------

4. Basic Radio Channel Utilization
Mode: W=Wideband Analog, N=Narrowband Analog, D=Digital, M=Mixed

Channel	Function	RX:	Frequency	Tone	Mode	Assignment	Remarks
1							
2							
3							
4							
5							
6							
7							
8							
9							
10							
11							
12							
13							
14							
15							
16							

5. Prepared by (Communications Unit)

CLARK FORK COMPLEX HUTTON IMT COMMAND AND GENERAL STAFF

		Office	Cell
Diane Hutton	Incident Commander		(406) 660-2324
Craig Glazier	Incident Commander (t)		(208) 659-1131
Chris Casey	Safety Officer		(406) 210-2338
George Johnson	Safety Officer		(406) 660-0451
Bob MacGregor	Information Officer	(406) 847-9974	(603) 568-9893
Glenda Scott	Information Officer		(406) 210-9225
Peri Suenram	Information Officer	(406) 827-0731	(406) 370-2144
Al King	Plans Section Chief		(208) 866-3662
Joyce Anderson	Finance Section Chief		(406) 690-4541
Russ Riebe	Logistics Section Chief		(406) 949-9766
Bill Lauer	Logistics Section Chief		(218) 244-9763
Jeff Knudson	Operations Section Chief		(208) 940-1107
Joe Sampson	Operations Section Chief		(406) 491-0884
Steve Croy	Air Support Supervisor (t)		(540) 230-2568
Marshall Plue	Air Support Supervisor (t)		(208) 661-6619
Linda Barbee	Medical Unit Leader		(406) 425-0589
Scott Carpenter	Incident Meteorologist		(307) 640-2362

AGENCIES

Christine Dawe	Clark Fork Agency Administrator		(406) 370-8865
John Carlson	KNF Agency Representative	(406) 827-3533	
Celeste Hancock	Dispatch Center Manager C'dA	(208) 762-6904	(208) 659-1346
Heather Good	Incident Business Manager IPNF	(208) 983-4096	(208) 451-4207
Terri Tangen	Incident Business Manager KNF		
Mike Behrens	IPNF Fire Staff	(208) 659-1392	(208) 659-1392
Chad Hudson	Couer d'Alene RD		(208) 661-9119
Tom Fleer	IDL- Area Manager Pend Orielle	(208) 265-5104	(208) 610-3744
Shawn Hicks	IDL Fire Warden Pend Orielle	(208) 263-5104	(208) 304-4218
Sam Gibbons	Couer d'Alene RD DFMO	(208) 660-5547	
Erick Walker	Sand Point District Ranger		(208) 290-6698
Carolyn Blatz	KNF Helibase	(406) 283-7865	
Lydia Allen	Resource Advisor		(208) 215-9701
Tom Rummel	Sanders Co Sheriff	(406) 827-3584	ext 3
Bill Naegeli	Sanders Co Emergency Management	(406) 827-6955	(406) 827-2227
Clark Fork Fire Rescue		(208) 266-1377	
Search and Rescue	Rocky Mountain Response	(406) 529-9767	
Bob Howard	Bonner Co Emergency Management	(208) 265-8867	(208) 255-6901
Lincoln Co Emergency Mgt		(406) 293-6295	

CLARK FORK COMPLEX ICP @ AMBER BEAR INN

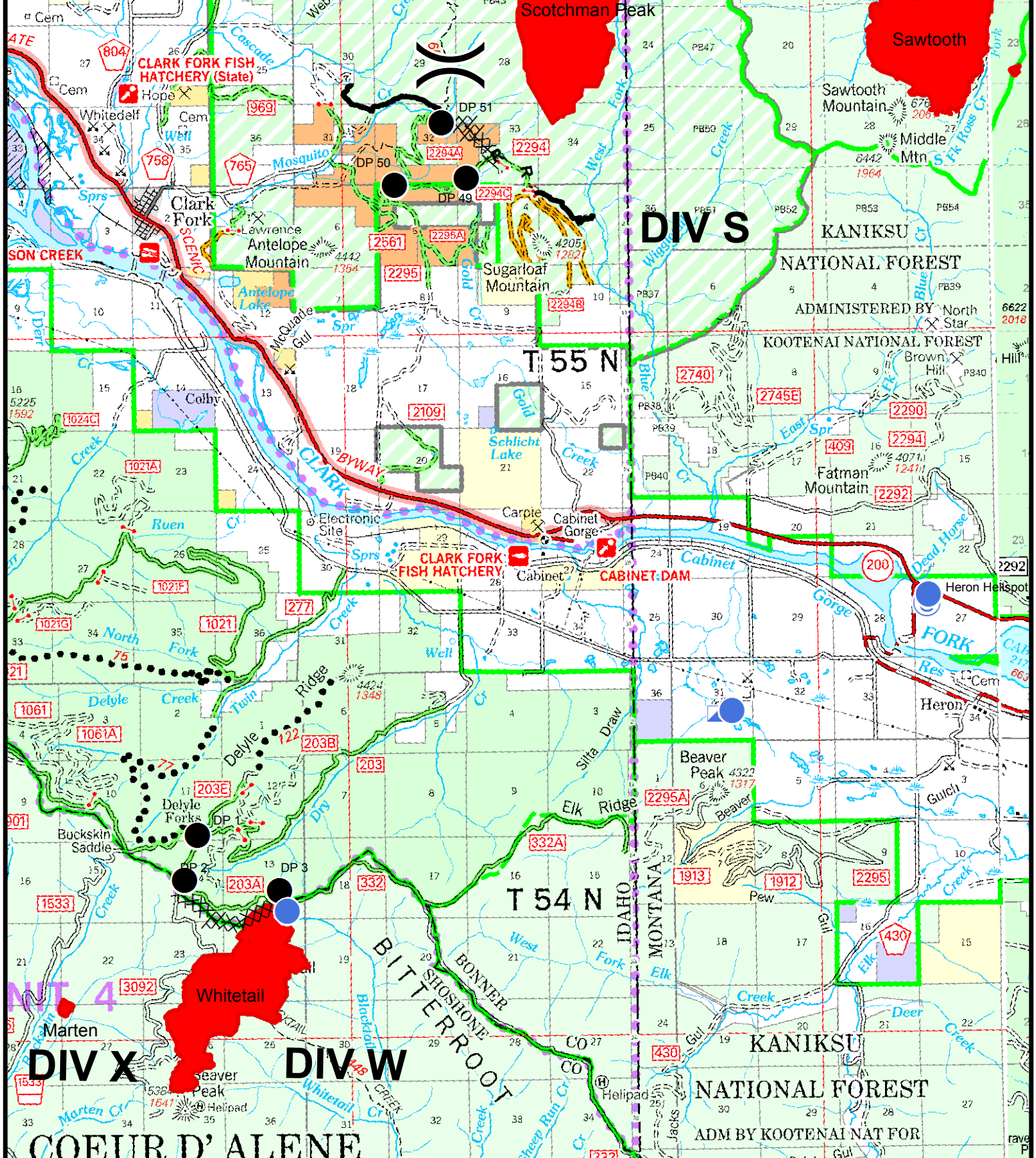
FAX: (406) 847-9971	FINANCE: (406) 690-4541
COMMO: (406) 847-9976	PLANS/DEMOB: (406) 847-9972
ORDERING: (406) 847-9975	SAFETY/OPS: (406) 847-9973

Clark Fork Complex
IAP Map 25 Aug 2015 - Map 1
Approximately 11,944 Acres total

- (X) Division
- Drop Point
- Fire Location
- Helispot
- Incident Command Post
- Med/Vac Site
- Staging Area
- Repeater
- Fire Perimeters
- Completed Line
- Completed Dozer Line
- R Road as Completed Line



0 1 2 3 4 Miles



Clark Fork Complex
IAP Map 25 Aug 2015 - Map 2
Approximately 11,944 Acres total

- (X) Division
- Drop Point
- Fire Location
- Helispot
- ▢ Incident Command Post
- ⊕ Med/Vac Site
- ⊕ Staging Area
- ⊕ Repeater

- ▬ Fire Perimeters
- ▬ Completed Line
- ▬ Completed Dozer Line
- R Road as Completed Line

