



Clark Fork Complex Incident Action Plan Thursday, August 27, 2015

Day 0600-2000 PDT

Night 1800-0800 PDT

ID-IPF-000923

P1J10X (0104)



MY SAFETY

An important aspect of safety is individual responsibility for one's own health and safety. Even with the best supervision, each individual firefighter will occasionally be required to make personal decisions concerning their safety. It is important that individual responsibility be taught as the basis for a viable safety program. Some of those individual responsibilities are:

Fitness for duty. Begin each work shift both mentally and physically prepared for the rigors of wildland firefighting. Getting adequate sleep, maintaining a healthy diet, and proactively participating in physical training are the foundation of "My Safety".

Utilization of personal protective equipment. Wear your PPE without being told. Each individual is responsible for performing their own risk assessments. If a hazard is identified that can be mitigated by wearing a particular PPE component it should be utilized. Fireline supervisors have more important duties to focus on other than performing glove patrol.

Following safe work practices. Using a spotter when backing up vehicles is the prudent and professional course of action. If you are unsure of how to perform a job task safely, ask your supervisor or experienced coworker.

Using the correct reference materials is an important aspect of safety. You should have a working knowledge of the Red Book, IRPG, and your local operating guidelines.

Ensure instructions are clearly understood. Communication is a basic responsibility for all fire personnel. Ask appropriate questions to clarify uncertain issues. Speak up when you observe hazards that may place yourself or others at risk.

Maintain situational awareness at all times. Awareness is a vital component of "My Safety". Pay attention to what is happening around your area of operations. Always display an awareness of what is happening around you by asking questions or making comments.

Summary: Do not expect someone else to be responsible for your safety. Take it upon yourself to make "My Safety" your number one priority.

INCIDENT OBJECTIVES	1. Incident Name Clark Fork Complex	2. Date 08/26/15	3. Time 1800												
4. Operational Period: 08/27/15 Day: 0600-2000 PDT Night: 1800-0800 PDT															
<p>5. General Control Objectives for the Incident (include alternatives)</p> <p>Strategy Utilize a combination of confine/contain and point protection strategies to protect identified Values at Risk, given resources available.</p> <p>Incident Objectives</p> <ol style="list-style-type: none"> 1. Firefighter, aviation and public safety is the highest priority. Use sound risk management and hazard mitigation processes that weigh probability of success against human life exposure for EVERY management action taken. 2. Minimize threats/loss to all identified values including private property; public and private improvements; electronic and communication facilities; T&E species; watershed, riparian and wilderness areas; archeological and historical sites. 3. Monitor current area, road and trail closures and provide recommendations to modify closures as warranted to ensure public safety. 4. Create and implement a Long Term Plan in coordination with the Forest(s) that protects Values at Risk, emphasizes firefighter and public safety and is commensurate with available resources. 5. Provide accurate and timely information to agencies, stakeholders and the public, through meetings, news releases, website updates, reports and personal contacts. 6. Keep costs commensurate with resource objectives through regular and ongoing cost analyses. 7. Coordinate initial attack response within the TFR area on the Idaho Panhandle and Kootenai National Forests. <p>Incident Requirements</p> <ol style="list-style-type: none"> 1. Minimize firefighter exposure in areas of standing dead timber throughout the fire areas. 2. Coordinate with the Agency Administrator or their representative when considering dozer line construction. 3. As can be accomplished safely, use minimum impact suppression tactics to maintain wilderness character and protect resources. Complete documentation of all intrusions (chainsaw use, pump use, helicopter landings/bucket drops) in WSAs. 4. All incoming crews, equipment, and vehicles must utilize a weed wash to prevent the introduction of invasive species. In addition to the equipment, crews will remove off-site soil and organic debris. All water delivery equipment will be cleaned prior to use and water sources must be approved by READS prior to cross-use. 5. All food and food waste must be stored in bear proof containers. All fire management activities will follow most recent Interagency Grizzly Bear Guidelines. 6. Maintain and enhance working relationships with partners, cooperators and stakeholders. 7. Coordinate with READs on the rehabilitation of areas impacted by fire management operations. 															
6. Weather Forecast for Period See Attached Weather Forecast															
<p>7. General Safety Message:</p> <p><i>Bears may be present in all fire locations. Practice proper food storage, even during the day while on the fireline.</i></p>															
<p>8. Attachments (mark if attached)</p> <table border="0"> <tr> <td><input checked="" type="checkbox"/> Organization List - ICS 203</td> <td><input checked="" type="checkbox"/> Weather Forecast</td> <td><input checked="" type="checkbox"/> Safety Message</td> </tr> <tr> <td><input checked="" type="checkbox"/> Div. Assignment Lists - ICS 204</td> <td><input checked="" type="checkbox"/> Fire Behavior Forecast</td> <td></td> </tr> <tr> <td><input checked="" type="checkbox"/> Communications Plan - ICS 205</td> <td><input checked="" type="checkbox"/> Incident Map</td> <td><input checked="" type="checkbox"/> Unit Log – ICS 214</td> </tr> <tr> <td><input checked="" type="checkbox"/> Medical Plan - ICS 206</td> <td><input checked="" type="checkbox"/> Air Operations– ICS 220</td> <td></td> </tr> </table>				<input checked="" type="checkbox"/> Organization List - ICS 203	<input checked="" type="checkbox"/> Weather Forecast	<input checked="" type="checkbox"/> Safety Message	<input checked="" type="checkbox"/> Div. Assignment Lists - ICS 204	<input checked="" type="checkbox"/> Fire Behavior Forecast		<input checked="" type="checkbox"/> Communications Plan - ICS 205	<input checked="" type="checkbox"/> Incident Map	<input checked="" type="checkbox"/> Unit Log – ICS 214	<input checked="" type="checkbox"/> Medical Plan - ICS 206	<input checked="" type="checkbox"/> Air Operations– ICS 220	
<input checked="" type="checkbox"/> Organization List - ICS 203	<input checked="" type="checkbox"/> Weather Forecast	<input checked="" type="checkbox"/> Safety Message													
<input checked="" type="checkbox"/> Div. Assignment Lists - ICS 204	<input checked="" type="checkbox"/> Fire Behavior Forecast														
<input checked="" type="checkbox"/> Communications Plan - ICS 205	<input checked="" type="checkbox"/> Incident Map	<input checked="" type="checkbox"/> Unit Log – ICS 214													
<input checked="" type="checkbox"/> Medical Plan - ICS 206	<input checked="" type="checkbox"/> Air Operations– ICS 220														
9. Prepared by (Planning Section Chief) Al King		9. Approved by (Incident Commander) Diane Hutton													

ORGANIZATIONAL STRUCTURE CHART		9. Operations Section	
1. Incident Name Clark Fork Complex		Chiefs	Joe Sampson (9/2)
			George Johnson (9/2)
2. Date 08/27/2015			
4. Operational Periods: DAY 0600-2000 Day PDT NIGHT 1800-0800 PDT			
5. Incident Commander and Staff			
		DIV A	Adam Carr (8/31), David Tingley (t) 9/6
Incident Commander	Diane Hutton (9/2) Craig Glazier (t) (9/2)	DIV Z	Harold Sutherland, Cody Montgomery (t) (9/2)
Safety Officer	Chris Casey(9/2) , Dennis Talbert (9/2), Grant Godbolt (9-8)	DIV Y	Kevin Smith (9/2)
Information Officer	Bob MacGregor (9/2), Glenda Scott (9/2), Nan Stinson, Peri Suenram (9/6)	DIV P	
6. Tribal and Agency Representatives		DIV S	John Olson O-50 9/8
Agency	Name	DIV W	Eric Morgan 9/2, David Wilkins (8/27)
USFS Agency Administrator	Christine Dawe	DIV T	Nate Stephens O-91 9/7
KNF Agency Rep	John Carlson	DIV X	
IDL Area Manager	Tom Fleer	Night Shift	
READ	Lydia Allen (9/4)		
7. Planning Section			
Chief	Al King (9/2)	A. Air Operations Branch	
Resources Unit	Jode Boyles Briggs (9/2)	Branch Director	
Status Check In	Mary Greenwood (8/31), Jennifer Burnham (9/4)	Air Attack Supervisor	
Computer Technical	Chad Wulf (9/2)	Helibase Manager	
GIS Specialist	Ray Backstrom (9/2), Molly Purnell (9/4), Katie Miller (9/7)	Air Support Supervisor	Scott Plue (9/7), Steve Croy (t) (9/4)
Fire Behavior	Risa Lange-Navarro (9/2)	Helicopter Coordinator	
GSAN	Jon Rieck (9/2)	Air Tanker Coordinator	
LTAN	Mary Taber (8/30), Diane Abendroth (t) (8/27)		
SOPL	Paul Swenson (t) (8/27), Stu Hoyt (9/6)		
IMET	Scott Carpenter (9/4)		
8. Logistics Section			
Chief	Russ Riebe (9/2), Bill Lauer (9/2)		
Ordering Manager	Mary Ann Hamilton (9/2)		
Facilities	Adam Fisher (9/2)		
Equipment Manager	Jeremiah Greene (9/3)	10. Finance	
Communications Unit	Todd Orr (9/2), Jim Olivarez (9/2), Chris Gentili (9/6)	Chief	Joyce Anderson (9/2)
Medical Unit	Linda Barbee (9/2), Pat Burroughs (8/27)	Deputy	
Base Camp Manager	Kyler McCarrel (9/2)	Time Unit	Janis Bouma (t) (9/2)
Supply Unit Leader	Dennis Cameron (9/2)	EQTR/PTRC	Harwood (t) (8/27), Johnson (9/9)
Cabinet Spike Logistics	Mike Justus (8/30)	Compensation/Claims	
		Cost Unit	Kevin O.Brien (9/3)
Prepared by: Jode Boyles Briggs RESL			



Clark Fork Complex Weather Forecast



FORECAST NO: 06 **NAME OF FIRE:** Clark Fork Complex
PREDICTION FOR: DAY SHIFT **UNIT:** Idaho Panhandle National Forest
SHIFT DATE: Thursday, August 27, 2015 **SIGNED:**

TIME AND DATE **Incident Meteorologist**
FORECAST ISSUED: 2030 Wednesday, August 26, 2015 **Scott J. Carpenter**

WEATHER DISCUSSION:

Temperatures will be slightly cooler today with slightly higher relative humidity values. Gusty and erratic winds will be possible near any shower or thunderstorm activity that is possible this afternoon and evening. Ridgetop winds and winds on unsheltered West and Southwest mid-slope exposures will also increase slightly from the southwest compared to the last few days.

WEATHER FORECAST: Mostly sunny. Increasing clouds with a slight chance of afternoon and evening showers and thunderstorms.

HIGH TEMPERATURES: 2300-4000 ft. 82-90° (Slightly cooler)
4000-6000 ft. 75-83°

MINIMUM HUMIDITY: 2300-4000 ft 16-21% (Slightly higher)
4000-6000 ft 19-24%

20 FT WINDS:

SHELTERED AREAS Terrain driven 4-6 mph with gusts to 13 mph after 1400.
RIDGETOP/UNSHeltered AREAS: SW 8-12 mph with gusts to around 20 mph.

HAINES INDEX (High Level): 3 (Very Low)

CWR (>0.10 Inch): Less than 10%

LAL: 1, then 2 in the afternoon and evening

INVERSIONS/MIXING HEIGHT: Inversion will slowly lift allowing deeper mixing after 1100, but as in past days reduced visibility from smoke is expected to persist through the day. Very sheltered areas in the Bull River drainage will struggle to mix out the smoke that settles in by this morning.

OUTLOOK:

THURSDAY NIGHT: Slight chance of showers and thunderstorms in the evening. Low visibility due to smoke. Low temperatures 45-55°F in the lower valleys, and 55-60°F for ridges and upper slopes. RH recovery to 75-80% for lower valleys, and 45-55% on ridges and upper slopes. Winds downslope/downvalley 4-8 mph, with ridgetop winds SW 10 mph. Inversion depth increasing to around 4000 feet MSL overnight.

FRIDAY AND FRIDAY NIGHT: Partly cloudy with a slight chance of late afternoon and evening showers and thunderstorms. Low visibility due to smoke. Gusty and erratic winds near thunderstorms. High Temperatures 70-85°F. Minimum RH 24-33%. Low Temperatures 50-57°F. Maximum RH 64-80%. 20 ft. Winds terrain driven 4-8 mph. Ridgetop winds SW 15-25 mph possible.

SATURDAY AND SATURDAY NIGHT: Windy and partly cloudy with cold frontal passage. 30% chance of showers and thunderstorms. High temperatures 63-75°F. Minimum RH 30-45%. 20 ft. Winds terrain driven early, then SW 6-10 mph with gusts to 15 mph after 1200 in sheltered areas and lower valleys. Ridgetop and west and southwest exposed mid-slope areas will have stronger winds with gusts 25-35 mph Saturday afternoon and evening.

FIRE BEHAVIOR FORECAST

FORECAST NUMBER: #7	TYPE OF FIRE: Wildland Fires
FIRE NAME: Clark Fork Complex	OPERATIONAL PERIOD: Day 08/27/15
DATE ISSUED: 08/26/15	TIME ISSUED: 2015 hrs
UNIT: Sandpoint RD/Idaho Panhandle NF/ID & Cabinet RD/Kootenai NF/MT	SIGNED: Risa Lange-Navarro, FBAN <i>/s/ Risa Lange-Navarro</i>

INPUTS

WEATHER SUMMARY: Mostly sunny & slight chance of afternoon/evening showers & thunderstorms
See Attached Spot Weather Forecast for further information.
North ID/Southern Mtns ERC **Observed** for 8/26/15 **83**, 97th percentile is 79
Kootenai NF ERC **Observed** for 8/26/15 **66**, 90th percentile is 61

OUTPUTS

FIRE BEHAVIOR

GENERAL:

- Available fuels include moose moss, lichen, beargrass, some brush, Lodgepole pine, Whitebark pine, Subalpine fir, White fir, Douglas-fir, Western Larch, Ponderosa pine, Western Red Cedar and Western Hemlock. Standing dead & snags with jackpots of heavy dead/downed and/or rotten fuels and snags are numerous. Marsh & valley bottoms burning readily and not a barrier. Fuel model 2, 8, 9 & 10. Fuels are extremely dry for this time of year and burning as if it was mid-September. Estimated 1000 hrs fuel moistures 10-13% & live fuel moisture 100%.
- Topography consists of steep, rocky drainages along Bull River & Clark Fork River with flat valley bottoms.
- Main fire behavior has surface fire (head, backing, flanking, creeping & smoldering), single/group torching trees and short-duration crown runs. Rollouts common with fire burning back upslope. Intensely burning heavy fuel jackpots is igniting tree moss/other ladder fuels torching out and spotting. Spotting distance potential up to 0.2 miles, expect further distance if sustained strong winds or thunderstorm winds occur. Snags & fire weakened trees falling down. Reburn potential is high.
- Watch for alignment of slope, winds and fuels for most active fire behavior. This is especially critical during thunderstorm downdrafts and indrafts.
- Burn period has been from 1000 to 2030 hrs with the main peak hours from 1700-2000 hrs for Bull River fires, 1300-2030 hrs for Whitetail.
- Probability of ignition about +/-85% on Unshaded South aspects with Fine Dead Fuel Moisture 3%.
- **Develop trigger points for your disengagement BEFORE fire behavior threatens your safety.**

SPECIFIC: Ensure lookouts are in a good safe spot where they can observe the fire activity/weather. Take hourly weather observations & bring them to Clark Fork ICP at end of shift. If smoky conditions exist, the following fire behavior will be moderated until heating from direct sunlight occurs.

Div A/I/Z: Fire continues to spread on the upslope side, in Star & Hamilton Gulches, Napoleon Creek and south of Pillick Ridge into Gin Gulch with head, flanking & backing fire. The southwest corner is working its way downslope in Blacktail Cr. Expect jackpots of heavy dead/downed fuels to continue burning; single/group tree torching & spotting. Expect higher chances for short-duration crown runs with predicted low RHs and high temperatures. Mop-up a good option early in the morning. Burnout opportunities along Dry Creek and Pillick Trail early prior to afternoon winds and/or thunderstorms. Rates of spread: head fire <12 ch/hr, flanking <5 ch/hr, backing <3 ch/hr; Flame Lengths: <6 ft. Spotting up to 0.2 mile. Watch for spots in areas where the smoke column has lain over yesterday and during the night.

Div P: Unstaffed

Div S: Monitor status. Head/backing fire spread on the south & east sides into the West Fk of Blue Cr as well as northeast into the head of the West Fk of Blue Cr. Mostly burnout of jackpots of heavy dead/downed fuels with possible single tree torching. Rates of spread: Head fire <11 ch/hr, backing <3 ch/hr; Flame Lengths: <5 ft. Watch for spots in areas where the smoke column has lain over downslope during the evening hours.

Div T: Fire continues to spread predominately upslope toward Sawtooth Mountain up Ross Cr as well as the spot to the northeast toward Ross Pt. If a spot becomes established across Ross Creek or down drainage from Ross Pt there is a high probability for rapid spread down drainage toward Ross Cedars area and Hwy 56. Fire behavior that can be expected is burning jackpots of heavy dead/downed fuels; single/group tree torching & spotting. Expect higher chances for short-duration crown runs with predicted low RHs and high temperatures. Rollouts common with upslope runs following up. Rates of spread: head fire <12 ch/hr, backing <4 ch/hr; Flame Lengths: <9 ft. Short range spotting up to 0.2 mile. Watch for spots in areas where the smoke column has lain over yesterday and during the evening.

Div W: Spread down on both sides of the ridge between Whitetail Peak and Beaver Peak with backing fire, north to the burnout line from 3092 Rd to dozerline on the NW corner, flanking to the E/NE toward the head of Blacktail Cr and head & backing off the south of Beaver Peak. Expect surface fire to spread into jackpots of heavy dead/downed fuels; single/group tree torching & spotting. Expect higher chances for short-duration crown runs with predicted hot/dry weather. Burnout opportunities along the 332 road to the E, dozerline across the N side and down any fireline with unburned fuels between the line and fire early prior to afternoon winds and/or thunderstorms. Mop-up a good option early in the morning. Rates of spread: head fire <12 ch/hr, backing <3 ch/hr, flanking <6 ch/hr; Flame Lengths: <8 ft. Spotting up to ¼ mile. Watch for spots in areas where burnout operations occurred, and where the smoke column has lain over to the northeast during the day and downslope during the night. Be aware of the fire in Div X which is to the southwest, below and downcanyon from your fire it still has heat in it.

Div X: Monitor status. Still has heat in it with smokes showing up in the interior. Watch for spots in areas where the smoke column has lain over yesterday & during the evening.

Div Y: Spread continues on all sides with head, flanking & backing fire with predominant spread into Basin Cr and downslope onto the flats toward the Bull River. Surface fire spreading into jackpots of heavy dead/downed fuels; single/group tree torching & spotting. Expect higher chances for short-duration crown runs with predicted low RHs and high temperatures. Rates of spread: head fire <12 ch/hr, flanking <5 ch/hr, backing <2 ch/hr; Flame Lengths: <7 ft. Spotting up to 0.2 mile. Mop-up a good option early in the morning. Watch for spots in areas where the smoke column has lain over yesterday and downslope overnight.

Night Operations: See the above Division breakout above for information on your location throughout the night. Most likely see activity in any thermal belts that form overnight with backing fire, jackpots burning out and occasional single/group tree torching. Watch the areas where the smoke has started to lay over the firelines with downslope/downcanyon winds. Be aware of smoky conditions from the day's fire activity which may obscure your vantage points.

AIR OPERATIONS: Look for smoky conditions to mix out after 1100 hrs for areas outside Bull River drainage, another round of gusty winds along ridgetops.

SAFETY

Watch Out situation for today **#15 Wind increases and changes direction**. Predicted thunderstorms and gusty, erratic winds could spread the fires in any direction if they are in the area. Make sure your lookouts are watching the skies and relaying any weather changes that could make your day interesting.

PLEASE GIVE FEEDBACK, it's greatly appreciated!

ASSIGNMENT LIST			1. Branch	2. Division/Group			
3. Incident Name			4. Operational Period				
Clark Fork Complex			Date: 08/272015		Time: 0600-2000		
5. Operations Personnel							
Operations Chief		Joe Sampson, George Johnson		Division/Group Supervisor		Adam Carr , David Tingley (t)	
Branch Director				Air Support Group Supervisor		Scott Plue Steve Croy (t)	
6. Resources Assigned This Period							
Strike Team/Task Force/ Resource Designator	Last Shift	Leader	No. Pers.	Trans. Needed	Drop Off PT./Time	Pick Up PT./Time	
TFLD	O-103,O-104	9/9	Campbell, Crawford	2	N	DP 21 09000	ICP 1930
STEN	O-76, (local	9/2	Gilham, Krick (t) 8/27	2	N	DP 21 0700	Cabinet Spike 1930
HEQB	(Local IA)		Tony Jermyn	1	N	DP 21 0700	Cabinet Spike 1930
LEO	O-85	8/31	JD Griffel	1	N	DP 21 0700	Cabinet Spike 1930
READ	O-82	8/29	Mark Mason	1	N	DP 21 0700	Cabinet Spike 1930
EMT	O-83, O-89	8/29	Hightower , Myers	2	N	DP 21 0700	Cabinet Spike 1930
THSP	O-29	8/31	John Cosolito	1	N	DP 21 0700	ICP 1730
T2IA Mississippi	C-1	9/4	Barker, Black (t)	20	N	DP 21 0700	Cabinet Spike 1930
Falling Module	O-31	9/6	Westphal, Berryhill	2	N	DP 21 0700	ICP 1930
T6 ENG Brush 104 Heron Rural		8/27	Bledsoe	3	N	DP 21 0700	Cabinet Spike 1930
T6 ENG E-6605	(Local IA)	8/27	Jason Snellman	4	N	DP 21 0700	Cabinet Spike 1930
T6 ENG E-472	(Local IA)		Jessica Bier	4	N	DP 21 0700	Cabinet Spike 1930
T6 ENG Trout Creek Brush	E-69	9/1	RURAL	2	N	DP 21 0700	Cabinet Spike 1930
T6 ENG E-81	(Local IA)		Jake Sallis	4	N	DP 21 0700	Cabinet Spike 1930
T2 WT Noxon	E-70		RURAL	1	N	DP 21 0700	Cabinet Spike 1930
T2 WT Aqua Enterprises	E-73	9/1	M. McNew	1	N	DP 21 0700	Cabinet Spike 1930
T4 Excavator Jensen	E-102	9/3	Duane Jensen	1	N	DP 21 0700	Cabinet Spike 1930
T3 Excavator Jensen	E-86	9/1	Quentin Jensen	1	N	DP 21 0700	Cabinet Spike 1930
T3 DOZ Jensen	E-85	9/2	Bill Jensen	1	N	DP 21 0700	Cabinet Spike 1930
T3 Skidgine Jensen	E-84	9/2	Joe Brodmarkle	1	N	DP 21 0700	Cabinet Spike 1930
7. Control Operations							
Continue improvement along Dry Creek and private property. Hold fire south of Dry Creek Road West of private property.							
8. Special Instructions							
E30 Wilderness Medic Ambulance will be staged at Highway Junction 56/200 and may respond at DIVS request. Ambulance is ALS. Ensure squelch is turned off to activate the code guard on Tactical Channel.							
Function	Frequency - RX	Frequency - TX	Tone	Channel	Comments		
Command	170.4125	165.9625	141.3	7	ICP TO LINE		
Command							
Tactical	168.0500	168.0500	141.3	1			
Air to Ground	170.1125	170.1125		15			
Prepared by (RESL) Jode Boyles Briggs		Approved by (PSC)			Date 08/26/2015		Time 2200

ASSIGNMENT LIST		1. Branch	2. Division/Group				
3. Incident Name		4. Operational Period					
Clark Fork Complex		Date: 08/27/2015			Time: 0600-2000		
5. Operations Personnel							
Operations Chief	Joe Sampson, George Johnson		Division/Group Supervisor	Harold Sutherland, Cody Montgomery (t)			
Branch Director			Air Support Group Supervisor	Scott Plue, Steve Croy (t)			
6. Resources Assigned This Period							
Strike Team/Task Force/ Resource Designator	Resource	Last Shift	Leader	No. Pers.	Trans. Needed	Drop Off PT./Time	Pick Up PT./Time
TFLD	O-105	9/9	Ian Staley	1	N	East Fork Road 0700	ICP 1930
STEN (t)	(Local IA)	9/3	Mark Wiedeman	1	N	East Fork Road 0700	Cabinet Spike 1930
HEQB	O-72	8/30	Todd Caudill	1	N	East Fork Road 0700	Cabinet Spike 1930
EMTF	O-81, O-80	8/30	F. Sperlak, M. Littler	2	N	East Fork Road 0700	Cabinet Spike 1930
LEO	O-85	8/31	JD Griffel	1	N	East Fork Road 0700	Cabinet Spike 1930
T2IA Custer Gallatin	C-13	9/8	R. Byrd, B. Koscelniak (t)	20	N	East Fork Road 0700	ICP 1930
D7 District Crew	(Local IA)		D. Otten	4	N	East Fork Road 0700	Cabinet Spike 1930
T6 ENG Thompson Falls 141	E-87	8/27	Flaman	2	N	East Fork Road 0700	Cabinet Spike 1930
T6 ENG 50 FWS MSN XR	E-98	9/3	Eddie Harsh	2	N	East Fork Road 0700	Cabinet Spike 1930
T6 ENG Noxon E-114	E-68	8/27	RURAL	2	N	East Fork Road 0700	Cabinet Spike 1930
T3 ENG Bull Lake 1260	E-83	9/1	Clyde Miller (RURAL)	3	N	East Fork Road 0700	Cabinet Spike 1930
DOZER E-28		8/31	Carvey, VanHorn	2	N	East Fork Road 0700	Cabinet Spike 1930
T3 WT Trout Creek 136	E-72	9/1	RURAL	1	N	East Fork Road 0700	Cabinet Spike 1930
T4 Excavator Backwoods	E-76	9/3	Peter Hammond	1	N	East Fork Road 0700	Cabinet Spike 1930
Excavator E-20		9/1	Whitmarsh, Kunley	2	N	East Fork Road 0700	Cabinet Spike 1930
T3S WT Backwoods Bobcat	E-79	9/3	Levi Klaus	1	N	East Fork Road 0700	Cabinet Spike 1930
7. Control Operations							
<p>Hold established lines from A/Z Division break to West Pillick Road. Look for opportunities to use Pillick Trail as holding line on East flank of Napoleon Fire.</p>							
8. Special Instructions							
<p>Take hourly weather observations and bring to ICP at end of shift. E30 Wilderness Medic Ambulance will be staged at Highway Junction 56/200 and may respond at DIVS request. Ambulance is ALS.</p>							
Function	Frequency - RX	Frequency - TX	Tone	Channel	Comments		
Command	170.4125	165.9625	141.3	7			
Command							
Tactical	168.2000	168.2000	141.3	2			
Air to Ground	170.1125	170.1125		15			
Prepared by (RESL) Jode Boyles Briggs		Approved by (PSC)		Date 08/26/2015		Time 2200	

ASSIGNMENT LIST		1. Branch	2. Division/Group				
3. Incident Name		4. Operational Period					
Clark Fork Complex		Date: 08/27/2015		Time: 0600-2000			
5. Operations Personnel							
Operations Chief	Joe Sampson, George Johnson		Division/Group Supervisor	Kevin Smith			
Branch Director			Air Support Group Supervisor	Scott Plue, Steve Croy (t)			
6. Resources Assigned This Period							
Strike Team/Task Force/ Resource Designator	Resource	Last Shift	Leader	No. Pers.	Trans. Needed	Drop Off PT./Time	Pick Up PT./Time
TFLD	O-49	8/29	Ohlwieler	2	N	Hwy 56/200 0700	ICP 1930
TFLD	O-95	8/30	Mike Fiaoni	1	N	Hwy 56/200 0700	ICP 1930
T2IA Stebbins #1	C-12	9/4	Jim One	20	N	Hwy 56/200 0700	ICP 1930
T6 ENG Rocky Mtn	E-75	9/7	Robert Nelson	3	N	Hwy 56/200 0700	ICP 1930
T6 ENG Fisher Rv. Red	E-14	9/5	Jason McAllister	2	N	Hwy 56/200 0700	ICP 1930
T3 ENG Rocky Mountain	E-74	9/7	Frank Broad	4	N	Hwy 56/200 0700	ICP 1930
Ibex Dozer	E-92	9/1	Mickey Weare	1	N	Hwy 56/200 0700	Cabinet Spike 1930
Jensen Excavator #2	E-86	9/2	Quentin Jensen	1	N	Hwy 56/200 0700	Cabinet Spike 1930
Wilderness Medic	E-30	9/7	Shane Brown	2	N	Hwy 56/200 0700	Cabinet Spike 1930
7. Control Operations							
<p>Implement structure protection on threatened values. Work with Sheriff Department on notification plan in the event of evacuation. Monitor movement of Government Fire.</p>							
8. Special Instructions							
<p>Take hourly weather observations and bring to ICP at end of shift. E30 Wilderness Medic Ambulance will be staged at Highway Junction 56/200 and may respond at DIVS request. Ambulance is ALS.</p>							
Function	Frequency - RX	Frequency - TX	Tone	Channel	Comments		
Command	170.4125	165.9625	141.3	7			
Command							
Tactical	168.6000	168.6000	141.3	3			
Air to Ground	170.1125	170.1125		15			
Prepared by (RESL) Jode Boyles Briggs		Approved by (PSC)		Date 08/26/2015		Time 2200	

ASSIGNMENT LIST			1. Branch		2. Division/Group		
3. Incident Name			4. Operational Period				
Clark Fork Complex			Date: 08/27/2015		Time: 0600-2000		
5. Operations Personnel							
Operations Chief		Joe Sampson, George Johnson		Division/Group Supervisor		John Olson	
Branch Director				Air Support Group Supervisor		Scott Plue, Steve Croy (t)	
6. Resources Assigned This Period							
Strike Team/Task Force/ Resource Designator	Resource	Last Shift	Leader	No. Pers.	Trans. Needed	Drop Off PT./Time	Pick Up PT./Time
T2 Skidder Ward	E-77	9/8	Kenneth Goff	2	N	Clark Fork IDOT 0730	Atkins Staging 1930
7. Control Operations							
Finish skidding logs from contingency line.							
8. Special Instructions							
Monitor fire movement and report perimeter to Plans.							
Function	Frequency - RX	Frequency - TX	Tone	Channel	Comments		
Command	170.4125	165.9625	141.3	7			
Command							
Tactical	168.6000	168.6000	141.3	3			
Air to Ground	162.6125	162.6125		14			
Prepared by (RESL)		Approved by (PSC)			Date		Time
Jode Boyles Briggs					08/26/2015		2200

ASSIGNMENT LIST		1. Branch		2. Division/Group		
3. Incident Name		4. Operational Period				
Clark Fork Complex		Date: 08/27/2015		Time: 0600-2000		
5. Operations Personnel						
Operations Chief	Joe Sampson, George Johnson		Division/Group Supervisor			
Branch Director			Air Support Group Supervisor		Scott Plue ,Steve Croy (t)	
6. Resources Assigned This Period						
Strike Team/Task Force/ Resource Designator	Last Shift	Leader	No. Pers.	Trans. Needed	Drop Off PT./Time	Pick Up PT./Time
7. Control Operations						
UNSTAFFED						
8. Special Instructions						
Function	Frequency - RX	Frequency - TX	Tone	Channel	Comments	
Command						
Command						
Tactical						
Air to Ground						
Prepared by (RESL)		Approved by (PSC)		Date		Time
Jode Boyles Briggs				08/26/2015		2200

ASSIGNMENT LIST				1. Branch		2. Division/Group	
						W	
3. Incident Name				4. Operational Period			
Clark Fork Complex				Date: 08/27/2015		Time: 0600-2000	
5. Operations Personnel							
Operations Chief		Joe Sampson, George Johnson		Division/Group Supervisor		Eric Morgan, David Wilkins (t)	
Branch Director				Air Support Group Supervisor		Scott Plue, Steve Croy (t)	
6. Resources Assigned This Period							
Strike Team/Task Force/ Resource Designator	Resource	Last Shift	Leader	No. Pers.	Trans. Needed	Drop Off PT./Time	Pick Up PT./Time
TFLD	O-1.7	9/1	Greg Reser	1	N	DP 1 0700	ICP 1930
HEQB	(FS local)		Bill Case, Dennis Gillmer (t)	2	N	DP 1 0700	ICP 1930
TFLD	O-1.1, (FS Local)		Pesch 8/27, Barth (t)	2	N	DP 1 0700	ICP 1930
SOF2	O-2.3	9/2	Dennis Talbert	1	N	DP 1 0700	ICP 1930
EMTF	O-25	9/5	Steven Williamson	1	N	DP 1 0700	ICP 1930
Red Medic	E-26	9/3	Rex Nielsen (EMPF)	1	N	DP 1 0700	ICP 1930
Idaho Panhandle IHC	C-5	8/29	Nipp	21	N	DP 1 0700	ICP 1930
T1 IHC Geronimo	C-8	8/31	Julius Hostetler	20	N	DP 1 0700	ICP 1930
DOZER Wink 650K	E-1	9/1	Metzger	2	N	DP 1 0700	ICP 1930
T6 ENG E-661	(Local IA)		Loveless	5	N	DP 1 0700	ICP 1930
T6 ENG Superior	E-57	9/7	Dan Faller	3	N	DP 1 0700	ICP 1930
Dozer Cat D4	E-6	9/1	Akre	2	N	DP 1 0700	ICP 1930
T1 WT Missoula RFD 327	E-10	9/1	Gieser	2	N	DP 1 0700	ICP 1930
T1 WT Wink	E-24	9/2	Swisher	1	N	DP 1 0700	ICP 1930
Feller Buncher E-32			Evans	1	N	DP 1 0700	ICP 1930
T1 Feller Buncher Parke Log	E-34	9/5	Schnabl	2	N	DP 1 0700	ICP 1930
T2 Skidgine	E-12	9/1	Alderdice	1	N	DP 1 0700	ICP 1930
T2 Skidgine	E-13	9/1	Pittman	2	N	DP 1 0700	ICP 1930
T2 Skidder Fousts	E-37	9/3	Neu	1	N	DP 1 0700	ICP 1930
T2 Skidder Fousts	E-38	9/3	Mastre	1	N	DP 1 0700	ICP 1930
T2 Excavator Akre Logging		9/2	RC	1	N	DP 1 0700	ICP 1930
7. Control Operations							
Utilize air resources and equipment to improve line along ridge.							
8. Special Instructions							
Take hourly weather observations and bring to ICP at end of shift.							
Function	Frequency - RX	Frequency - TX	Tone	Channel	Comments		
Command	170.4125	165.9625	141.3	7			
Command							
Tactical	166.7250	166.7250	141.3	4			
Air to Ground	162.6125	162.6125		14			
Prepared by (RESL) Jode Boyles Briggs		Approved by (PSC)		Date 08/26/2015		Time 2200	

ASSIGNMENT LIST			1. Branch		2. Division/Group		
3. Incident Name			4. Operational Period				
Clark Fork Complex			Date: 08/27/2015		Time: 0600-2000		
5. Operations Personnel							
Operations Chief		Joe Sampson, George Johnson		Division/Group Supervisor		Nate Stephens	
Branch Director				Air Support Group Supervisor		Scott Plue, Steve Croy (t)	
6. Resources Assigned This Period							
Strike Team/Task Force/ Resource Designator	Resource	Last Shift	Leader	No. Pers.	Trans. Needed	Drop Off PT./Time	Pick Up PT./Time
T6 ENG Castle Mountain	E-97	9/3	Hugh Magone	3	N	DP 20 0700	ICP 1930
T6 ENG Bull Lake #1230	E-58	9/5	Michael Reese	2	N	DP 20 0700	ICP 1930
7. Control Operations							
Assess structure protection needs in Wilderness View and Bull Lake Estates . Monitor Sawtooth Fire growth.							
8. Special Instructions							
Minimize suppression impacts to lower Ross Creek RNA, Spar Springs, and Ross Creek Wild and Scenic River Corridor. Take hourly weather observations and bring to ICP at end of shift.							
Function	Frequency - RX	Frequency - TX	Tone	Channel	Comments		
Command	170.4125	165.9625	141.3	7			
Command							
Tactical	166.7750	166.7750	141.3	5			
Air to Ground	170.1125	170.1125	15				
Prepared by (RESL)		Approved by (PSC)			Date		Time
Jode Boyles Briggs					08/26/2015		2200

ASSIGNMENT LIST			1. Branch		2. Division/Group		
3. Incident Name			4. Operational Period				X
Clark Fork Complex			Date: 08/27/2015		Time: 0600-2000		
5. Operations Personnel							
Operations Chief		Joe Sampson, George Johnson		Division/Group Supervisor			
Branch Director				Air Support Group Supervisor		Scott Plue (9/7), Steve Croy (t) (9/04)	
6. Resources Assigned This Period							
Strike Team/Task Force/ Resource Designator	Last Shift	Leader	No. Pers.	Trans. Needed	Drop Off PT./Time	Pick Up PT./Time	
7. Control Operations							
Monitor fire by Divisions W or Air.							
8. Special Instructions							
Function	Frequency - RX	Frequency - TX	Tone	Channel	Comments		
Command	168.1000	170.4500	141.3	8			
Command							
Tactical	166.7750	166.7750	141.3	5			
Air to Ground	162.6125	162.6125					
Prepared by (RESL)		Approved by (PSC)			Date		Time
Jode Boyles Briggs					08/26/2015		2200

ASSIGNMENT LIST				1. Branch		2. Division/Group	
						NS	
3. Incident Name				4. Operational Period			
Clark Fork Complex				Date: 08/27/2015		Time: 1800-0800	
5. Operations Personnel							
Operations Chief		Joe Sampson, George Johnson		Division/Group Supervisor			
Branch Director				Air Support Group Supervisor		N/A	
6. Resources Assigned This Period							
Strike Team/Task Force/ Resource Designator	Last Shift	Leader	No. Pers.	Trans. Needed	Drop Off PT./Time	Pick Up PT./Time	
TFLD		Joel Sather	1	N	Highway 56/200 1900	Cabinet Spike 0700	
STEN	O-22	9-5	Jerry Montella (t)	1	N	Highway 56/200 1900	ICP 0700
T3 ENG Bull Lake VFW	E-58	9/5	Jeff Drake	3	N	Highway 56/200 1900	ICP 0700
T6 ENG Bishop	E-61	9/4	Will Hughes	3	N	Highway 56/200 1900	ICP 0700
T6 ENG 621 Lake George	E-96	9/4	George Ross	2	N	Highway 56/200 1900	ICP 0700
T6 ENG OK-COA 8561	E-95	9/6	John Worthington	3	N	Highway 56/200 1900	ICP 0700
WT-3, WT-6		Unstaffed /Staged					
7. Control Operations							
<p>Patrol fires along Highway 56 and Highway 200 on Divisions A, Z, Y. As necessary notify residents of increased fire behavior approaching their homes. Night shift needs to staff an engine behind McDowell Bridge on Division Y.</p>							
8. Special Instructions							
<p>Take hourly weather observations and bring to ICP at end of shift. Medical at ICP may be contacted by TFLD on Command 1. Night personnel staying at ICP check in with Logistics for sleeping arrangements.</p>							
Function	Frequency - RX	Frequency - TX	Tone	Channel	Comments		
Command	170.4125	165.9625	141.3	7			
Command							
Tactical	166.7750	166.7750	141.3	5			
Air to Ground							
Prepared by (RESL) Jode Boyles Briggs		Approved by (PSC)		Date 08/26/2015		Time 2200	

ASSIGNMENT LIST				1. Branch		2. Division/Group	
				Loaned			
3. Incident Name			4. Operational Period				
Clark Fork Complex			Date: 08/27/2015		Time: 0600-1930		
5. Operations Personnel							
Operations Chief		Joe Sampson, George Johnson					
Branch Director					Air Support Group Supervisor		Scott Plue, Steve Croy (t)
6. Resources Assigned This Period							
Strike Team/Task Force/ Designator	Resource	Last Shift	Leader	No. Pers.	Trans. Needed	Drop Off PT./Time	Pick Up PT./Time
T3 DOZ Taylor Services	E-42	9/4	Bob Taylor	1	N	East Fork HWY 30 0830	
T1 Feller-Buncher Timber	Jack E-5	9/5	Flanagan	2	N	East Fork HWY 30 0830	
T1 Fellerbuncher Hallwood	E-35	9/6	Jesse Conley	1	N	East Fork HWY 30 0830	
T2 Excavator Wink Inc	E-8	9/1	Winkelseth	2	N	East Fork HWY 30 0830	
T2 Excavator Price	E-25	9/6	Nick Smith	1	N	East Fork HWY 30 0830	
7. Control Operations							
8. Special Instructions							
<p>Loaned to Goat Rocks beginning this operational period. Weed wash prior to leaving staging area. Equipment and personnel will continue to turn financial documentation to Clark Fork ICP.</p>							
Function	Frequency - RX	Frequency - TX	Tone	Channel	Comments		
Command							
Command							
Tactical							
Air to Ground							
Prepared by (RESL)		Approved by (PSC)			Date		Time
Jode Boyles Briggs					08/26/2015		2200

ASSIGNMENT LIST				1. Branch		2. Division/Group			
				Staging					
3. Incident Name Clark Fork Complex				4. Operational Period Date: 08/27/2015		Time: 0600-1930			
5. Operations Personnel									
Operations Chief		Joe Sampson, George Johnson			STAM		Jeremiah Greene		
Branch Director					Air Support Group Supervisor		Scott Plue, Steve Croy (t)		
6. Resources Assigned This Period									
Strike Team/Task Force/ Resource Designator	Resource	Last Shift	Leader	No. Pers.	Trans. Needed	Drop Off PT./Time	Pick Up PT./Time		
T3 DOZ Taylor and Sons	E-43	9/4	Dave Taylor	1	N	Atkins Staging 0700	Atkins Staging 1930		
7. Control Operations									
Be prepared for line assignment, monitor Command Channel 7 on the radio.									
8. Special Instructions									
Function	Frequency - RX	Frequency - TX	Tone	Channel	Comments				
Command	170.4125	165.9625	141.3	7					
Command									
Tactical									
Air to Ground									
Prepared by (RESL) Jode Boyles Briggs		Approved by (PSC)			Date 08/26/2015			Time 2200	

AIR OPERATIONS SUMMARY

Prepared By: Steve Croy – ASGS(t)

08/26/2015

Prepared Time: 20:00

1. INCIDENT NAME: Clark Fork Complex	2. OPS PERIOD DATE: 08/27/2015	START TIME: 0600	END TIME: 2000	SUNRISE: 05:55 PDT 06:55 MDT	SUNSET: 19:35 PDT 20:35 MDT
3. REMARKS (Safety Notes, Hazards, Air Operations Special Equipment): - Communicate known flight hazards to your pilot: wires, towers, snags, other aircraft. - Aircraft requests will be made thru Line Operations. - AFTER Aug 15: Fed aircraft will cease tactical operations after sundown, flight after sunset shall be ferry back to base only. - Smoke & limited visibility expected to continue. - Available aircraft will come from Shoshone, Libby, or Coeur D'Alene when ordered.			4. READY ALERT AIRCRAFT MEDEVAC – Contact Clark Fork Complex ICP Communication with Request.		5. TFR's: 5/7406 5nm centered Whitetail Peak A/A freq 124.650, Surface to 7000' MSL

6. PERSONNEL	NAME	PHONE #	7. FREQUENCIES	AM	FM	8. FIXED-WING- Type/ Make-Model/ N#/ Base															
ASGS	Scott Plue	208-661-6619	Idaho Air / Air	124.650		AIRTANKERS: Request thru Operations															
ASGS (t)	Steve Croy	540-230-2568	Idaho Air/Ground		162.6125	SEATS: Request thru Operations															
			Montana Air to Air	132.6750		ATGS AIRCRAFT: Request thru Operations															
			Montana Air/Ground		170.1125																
			Air Guard		168.6250 TX tone 110.9	Helispots & Dipsites:															
						<table style="width: 100%; border-collapse: collapse;"> <thead> <tr> <th style="width: 15%;">Name</th> <th style="width: 10%;">Lat</th> <th style="width: 10%;">Long</th> <th style="width: 10%;">Elev</th> <th style="width: 45%;">Comments</th> </tr> </thead> <tbody> <tr> <td>Dry Creek HS</td> <td>48 04.361'</td> <td>116 06.276'</td> <td>2285'</td> <td>FS tree/seed orchard pend agreement</td> </tr> <tr> <td>Clark Fork HB</td> <td>48 03.496'</td> <td>116 00.923'</td> <td>2510'</td> <td></td> </tr> </tbody> </table>	Name	Lat	Long	Elev	Comments	Dry Creek HS	48 04.361'	116 06.276'	2285'	FS tree/seed orchard pend agreement	Clark Fork HB	48 03.496'	116 00.923'	2510'	
Name	Lat	Long	Elev	Comments																	
Dry Creek HS	48 04.361'	116 06.276'	2285'	FS tree/seed orchard pend agreement																	
Clark Fork HB	48 03.496'	116 00.923'	2510'																		
NOTE: Aircraft requests are placed through Coeur d'Alene Dispatch. Plan ahead for timely arrival of aircraft, ferry flights approx 20-30 min.																					

FAA N#	T Y	MAKE/ MODEL	BASE	MGR	AVAIL	REMARKS	FAA N#	T Y	MAKE/ MODEL	BASE	MGR	AVAIL	REMARKS
N414	1	K-max K-1200	Libby (S59)		0800		N184CH	1	BV-107	Shoshone		0800	
N9122Z	2	Bell 212HP	Libby (S59)		0800		N949CH	1	CH47D	Shoshone		0800	
N144MA	3	Bell 407	Libby (S59)		0800		N17HX	2	Bell 205 A-1	Shoshone		0800	
N19BH	3	Bell 206 L-4	Libby (S59)		0800	Goat Rock Cplx	N2773H	2	Bell 205 A-1	Shoshone		0800	
							N6148U	3	Bell 407	Shoshone		0800	
							N20HX	3	N20HX	Shoshone		0800	

NOTE:

10. TASK/ MISSION/ ASSIGNMENT (Type/ function includes: Air Tactical, Retardant, Recon, Personnel Transport, Bucket Operations, SAR, etc.)
Missions: OPS, FBAN/LTAN recons; bucket work as requested (Div W&Z); possible repeater placement; Support Zone IA

Safety Message

INCIDENT:
**Clark Fork
Complex**

DATE: AUGUST 27, 2015

OPERATIONAL PERIOD:
0600-2000 hrs.
1800-0800 hrs.

POWERLINES & Fireline Hazards

Operating near or under power lines poses unique hazards. Follow these precautions to reduce potential equipment damage or injury to YOU

ALWAYS TREAT DOWNED WIRES AS ENERGIZED

If possible, the power company should deactivate lines in the fire area.

Don't operate heavy equipment under power lines.

Keep all aviation activity away from power lines. Inform air attack and/or other aviation resources of the location of the power lines.

Don't drive with long antennas under power lines.

Don't stand near power lines during retardant drops.

Don't park under power lines. The magnetic field around energized power lines can induce an electrical charge in ungrounded vehicles or equipment. This charge can shock anyone who touches the vehicle.

Don't apply straight stream to power lines.

All personnel should be cautioned that smoke may become charged and conduct the electrical current. Deactivated transmission and distribution lines may continue to pose a hazard due to induction.

If power lines fall on your vehicle, DON'T leave the vehicle until the power company arrives. If the vehicle is on fire or fire is near, jump clear, don't hang on, keep feet together, and bunny hop away.

Communicate- notify all resources of down electrical lines

Identify- determine entire extent of hazard by visually tracking lines two poles each way

Isolate- Flag area around down wire hazards; Post Guards

Deny entry- Delay firefighting actions until hazard is identified and are flagged off

SAFETY OFFICER -Chris Casey 8/26/15



MEDICAL PLAN (ICS 206 WF)

1. Incident/Project Name		2. Operational Period						
Clark Fork Complex		Date/Time 08-27-2015		0600-2000		1800-0800		
3. Ambulance Services								
Name	Complete Address	Phone & EMS Frequency	Advanced Life Support (ALS)					
			Yes	No				
Noxon Ambulance Service	Noxon, Montana	Ordered through CDC, call ICP on Command 1 for dispatch.			X			
Clark Fork Ambulance	Clark Fork, ID	208-266-1574	YES					
Libby Volunteer Ambulance	Libby, Montana	406-293-4112	YES					
Bonner Emergency EMS	Sandpoint, Idaho	208-255-2194	YES					
Troy Volunteer Ambulance	205 3 rd St., Troy, MT	406-295-6505			X			
Wilderness Medic Ambulance-E30	ICP-Clark Fork Complex, Heron, MT Staged at Hwy56/200Jct during 0800-2000 and at ICP during night ops 1800-0800	Available on Command 1-Call Wilderness Medic Ambulance	X					
4. Air Ambulance Services								
Name	Phone	Type of Aircraft & Capability						
Life Flight Network	800-232-0911	Rotor and fixed wing , ALS with night capabilities						
Sandpoint or Coeur d' Alene, ID								
Alert Air Rescue	406-752-9797	Helicopter, ALS with night capabilities						
Kallispell								
Two Bear Air	406-758-5610	Dispatched through Flathead County Sheriff's Dispatch. This is a SAR/Extraction ship with Hoist, Short Haul, and night capabilities. NOT AN AIR AMBULANCE> Must be rendezvoused with ALS Ambulance						
Flathead County								
Northwest Medstar	800-5723201	Rotor and Fixed Wing, ALS with night capabilities						
Missoula, MT								
5. Hospitals								
Name Complete Address	GPS Datum – WGS 84 Coordinate Standard Degrees Decimal Minutes DD° MM.MMM' N - Lat DD° MM.MMM' W - Long		Travel Time Air Gnd		Phone	Helipad Yes No		Level of Care Facility
HarborView Med Center 325 Ninth Ave. Seattle, WA	Lat: Long:	47 36.19 N 122 19.50 W	90 min	N/A	206-744-3000	X		Trauma 1- Burn Center
Cabinet Peaks Med Center 209 Health Park Dr. Libby, MT	Lat: Long:	48 23.31 N 115 32.42 W			406-283-7000	X		Critical Access
Bonner General, 520 N 3 rd Ave, Sandpoint, ID 83864	Lat: Long:		15 min	45-60 min	208-263-1441	<input checked="" type="checkbox"/>	<input type="checkbox"/>	Critical Access
Kootenai Medical 203 Lincoln Way, Coeur d' Alene.83814	Lat: Long:	47 41.49 N 116 47.42 W	20 min	60-90 min	208-666-2000	<input checked="" type="checkbox"/>	<input type="checkbox"/>	Level 2 Trauma
Kalispell Regional	Lat:	47.604 N			406-752-5111	<input checked="" type="checkbox"/>	<input type="checkbox"/>	Trauma Level 3

MEDICAL PLAN (ICS 206 WF)

Hospital, 310 Sunny View Lane, Kalispell, MT	Long:	122.321 W					
6. Division Branch Group		Area Location Capability					
ICP / Medical Unit Sanders County Search and Rescue ICP- 406-847-2193	EMS Responders & Capability:	MEDL and Paramedic at night.					
	Equipment Available on Scene:	First Aid and Basic Life Support					
	Medical Emergency Channel:	Command 1					
	Ambulance to Scene	45 minutes					
	Air:	30 min					
	Approved Helispot:	yes					
	Lat:	43 03.51 N					
	Long:	116 01.58 W					
DIV A	EMS Responders & Capability:	2 EMTs					
	Equipment Available on Scene:	Basic Life Support					
	Medical Emergency Channel:	Command 1					
	ETA for Ambulance to Scene:						
	Air:	45 min					
	Approved Helispot:						
	Lat:	48 11.93 3 N					
	Long:	115 51.687 W					
DIV Z	EMS Responders & Capability:	2 EMTF					
	Equipment Available on Scene:	Basic Life Support					
	Medical Emergency Channel:	Command 1					
	ETA for Ambulance to Scene:						
	Air:	45 min					
	Approved Helispot:						
	Lat:	48 11.93 3 N					
	Long:	115 51.687 W					
DIV Y	EMS Responders & Capability:	Contact Medical Control through ICP for EMS Response					
	Equipment Available on Scene:						
	Medical Emergency Channel:	Command 1					
	ETA for Ambulance to Scene:						
	Air:						
	Approved Helispot	Gravel Pit					
	Lat:	48 2.339 N					
	Long:	115 50.328 W					
DIV T	EMS Responders & Capability:	Contact Medical Control through ICP for EMS response					
	Equipment Available on Scene:						
	Medical Emergency Channel:	Command 1					
	ETA for Ambulance to Scene:						
	Approved Helispot	DP 20					
	Lat:	48 11.939 N					
	Long:	115 51.672 W					
	DIV X	EMS Responders & Capability:	Smoke Jumpers on scene				
Equipment Available on Scene:							
Medical Emergency Channel:		Command 2					
ETA for Ambulance to Scene:		Inaccessible by ground					
Approved Helispot		DP 2 or as identified by Jumpers at the time of emergency					
Lat:		48 1.551 N					
Long:		116 10.197 W					

MEDICAL PLAN (ICS 206 WF)

DIV NS	EMS Responders & Capability:	Medical will respond from ICP as needed at night
	Equipment Available on Scene:	BLS/ALS
	Medical Emergency Channel:	Command 1
	ETA for Ambulance to Scene:	
	Air:	
	Lat:	
	Long:	

7. Name & Location	Area Location Capability		
DIV S	EMS Responders & Capability:	Paramedic(Red Medic) can respond upon request of DIV/	
	Equipment Available on Scene:	BLS/ALS	
	Medical Emergency Channel:	Command 1	
	ETA for Ambulance to Scene:		
	Air:		
	Approved Helispot :	Staging	
	Lat:	48 4.575 N	
Long:	115 58.271 W		
DIV W	EMS Responders & Capability	1 EMTF (Whiskey Medic) at DP1 / 1EMPF (Red Medic) at DP 1	
	Equipment Available on Scene:	BLS/ALS	
	Medical Emergency Channel:	Command 1 or 2	
	ETA for Ambulance to Scene:		
	Air:		
	Approved Helispot:	DP 2	
	Lat:	48 9.167 N	
Long:	115 52.319 W		
8. Prepared By: MEDL	9. Date/Time	10. Reviewed By (Safety Officer)	11. Date/Time
Patricia Burroughs MEDL	08/26/2015 2000	Chris Casey	08/26/2015 @ 2000 hrs.

Medical Incident Report

FOR ALL MEDICAL EMERGENCIES: IDENTIFY ON SCENE INCIDENT COMMANDER BY NAME AND POSITION AND ANNOUNCE "MEDICAL EMERGENCY" TO INITIATE RESPONSE FROM IMT COMMUNICATIONS/DISPATCH.

Use items one through nine to communicate situation to communications/dispatch.

1. CONTACT COMMUNICATIONS/DISPATCH

Ex: "Communications, Div. Alpha. Stand-by for Priority Medical Incident Report." (If life threatening request designated frequency be cleared for emergency traffic.)

2. INCIDENT STATUS: Provide incident summary and command structure.

Nature of Injury/Illness		<i>Describe the injury (Ex: Broken leg with bleeding)</i>
Incident Name		<i>Geographic Name + "Medical" (Ex: Trout Meadow Medical)</i>
Incident Commander		<i>Name of IC</i>
Patient Care		<i>Name of Care Provider (Ex: EMT Smith)</i>

3. INITIAL PATIENT ASSESSMENT: Complete this section for each patient. This is only a brief, initial assessment. Provide additional patient info after completing this 9 Line Report.

Number of Patients:	Male / Female	Age:	Weight:
Conscious? <input type="checkbox"/> YES <input type="checkbox"/> NO = MEDEVAC!			
Breathing? <input type="checkbox"/> YES <input type="checkbox"/> NO = MEDEVAC!			
Mechanism of Injury: <i>What caused the injury?</i>			
Lat/Long (Datum WGS84) <i>Ex: N 40° 42.45' x W 123° 03.24'</i>			

4. SEVERITY OF EMERGENCY, TRANSPORT PRIORITY

SEVERITY	TRANSPORT PRIORITY
<input type="checkbox"/> URGENT-RED Life threatening injury or illness. <i>Ex: Unconscious, difficulty breathing, bleeding severely, 2° – 3° burns more than 4 palm sizes, heat stroke, disoriented.</i>	Ambulance or MEDEVAC helicopter. Evacuation need is IMMEDIATE.
<input type="checkbox"/> PRIORITY-YELLOW Serious Injury or illness. <i>Ex: Significant trauma, not able to walk, 2° – 3° burns not more than 1-2 palm sizes.</i>	Ambulance or consider air transport if at remote location. Evacuation may be DELAYED.
<input type="checkbox"/> ROUTINE-GREEN Not a life threatening injury or illness. <i>Ex: Sprains, strains, minor heat-related illness.</i>	Non-Emergency. Evacuation considered Routine of Convenience.

5. TRANSPORT PLAN:

Air Transport: (Agency Aircraft Preferred)

<input type="checkbox"/> Helispot	<input type="checkbox"/> Short-haul/Hoist	<input type="checkbox"/> Life Flight	<input type="checkbox"/> Other
-----------------------------------	---	--------------------------------------	--------------------------------

Ground Transport:

<input type="checkbox"/> Self-Extract	<input type="checkbox"/> Carry-Out	<input type="checkbox"/> Ambulance	<input type="checkbox"/> Other
---------------------------------------	------------------------------------	------------------------------------	--------------------------------

6. ADDITIONAL RESOURCE/EQUIPMENT NEEDS:

<input type="checkbox"/> Paramedic/EMT(s)	<input type="checkbox"/> Crew(s)	<input type="checkbox"/> SKED/Backboard/C-Collar
<input type="checkbox"/> Burn Sheet(s)	<input type="checkbox"/> Oxygen	<input type="checkbox"/> Trauma Bag
<input type="checkbox"/> Medication(s)	<input type="checkbox"/> IV/Fluid(s)	<input type="checkbox"/> Cardiac Monitor/AED
<input type="checkbox"/> Other (i.e. splints, rope rescue, wheeled litter)		

7. COMMUNICATIONS:

Function	Channel Name/Number	Receive (Rx)	Tone/NAC *	Transmit (Tx)	Tone/NAC *
<i>Ex: Command</i>	<i>Forest Rpt, Ch. 2</i>	<i>168.3250</i>	<i>110.9</i>	<i>171.4325</i>	<i>110.9</i>
COMMAND					
AIR-TO-GRND					
TACTICAL					

*(NAC for digital radio system)

8. EVACUATION LOCATION:

Lat/Long (Datum WGS84) <i>EX: N 40 42.45' x W 123 03.24'</i>	
Patient's ETA to Evacuation Location:	
Helispot/Extraction Size and Hazards:	

9. CONTINGENCY:

Considerations: <i>If primary options fail, what actions can be implemented in conjunction with primary evacuation method? Be thinking ahead...</i>	REMEMBER: Confirm ETA's of resources ordered Act according to your level of training Be Alert. Keep Calm. Think Clearly. Act Decisively.
--	--

Clark Fork Complex

Incident within an Incident Emergency Action Plan

In the case of a serious accident requiring patient transport to a medical facility:

- The closest ranking Operations Leader (i.e. Division Supervisor) at the accident scene will take charge and be the Point of Contact (POC).
- Mobilize the closest paramedic/EMT to the scene by ground or air to treat the patient(s) and package for transport.
- Use the Medical Plan ICS 206WF and Incident Medical Report Form (Nine Line) in the IAP to collect and document patient information, communicate with ICP Communications and plan for two types of transport (ground and air).
- Operations Section Chief (Line or Plans) will direct medical emergency response from ICP or on-scene.
- Upon notification of a serious accident, the Incident Commander, Safety Officer, Operations Section Chief (Plans), Air Support Group Supervisor and Medical Unit Leader will report to the ICP Communications.
- Incident Communications will notify Coeur d' Alene Interagency Dispatch Center (CDC) (208-772-3283) and coordinate patient transportation.
- All other Command and General Staff will go to ICP communications to monitor the situation and be available if needed to assist.
- Incident Radio traffic will be monitored 24 hours a day at the Clark Fork ICP.

Approved by: _____ Incident Commander

Date: _____

C. R. J.
8/20/15

INCIDENT RADIO COMMUNICATIONS PLAN	1. Incident Name	2. Date/ Time Prepared	3. Operational Period Date/Time
---	------------------	------------------------	---------------------------------

4. Basic Radio Channel Utilization
Mode: W=Wideband Analog, N=Narrowband Analog, D=Digital, M=Mixed

Channel	Function	RX:	Frequency	Tone	Mode	Assignment	Remarks
1		TX:					
2		TX:					
3		TX:					
4		TX:					
5		TX:					
6		TX:					
7		TX:					
8		TX:					
9		TX:					
10		TX:					
11		TX:					
12		TX:					
13		TX:					
14		TX:					
15		TX:					
16		TX:					

5. Prepared by (Communications Unit)

CLARK FORK COMPLEX HUTTON IMT COMMAND AND GENERAL STAFF

		Office	Cell
Diane Hutton	Incident Commander		(406) 660-2324
Craig Glazier	Incident Commander (t)		(208) 659-1131
Chris Casey	Safety Officer		(406) 210-2338
Bob MacGregor	Information Officer	(406) 847-9974	(603) 568-9893
Glenda Scott	Information Officer		(406) 210-9225
Peri Suenram	Information Officer	(406) 827-0731	(406) 370-2144
Al King	Plans Section Chief		(208) 866-3662
Joyce Anderson	Finance Section Chief		(406) 690-4541
Russ Riebe	Logistics Section Chief		(406) 949-9766
Bill Lauer	Logistics Section Chief		(218) 244-9763
Joe Sampson	Operations Section Chief		(406) 491-0884
George Johnson	Operations Section Chief		(406) 660-0451
Steve Croy	Air Support Supervisor (t)		(540) 230-2568
Marshall Plue	Air Support Supervisor (t)		(208) 661-6619
Linda Barbee	Medical Unit Leader		(406) 425-0589
Scott Carpenter	Incident Meteorologist		(307) 640-2362

AGENCIES

Christine Dawe	Clark Fork Agency Administrator		(406) 370-8865
John Carlson	KNF Agency Representative	(406) 827-3533	
Celeste Hancock	Dispatch Center Manager C'dA	(208) 762-6904	(208) 659-1346
Heather Good	Incident Business Manager IPNF	(208) 983-4096	(208) 451-4207
Terri Tangen	Incident Business Manager KNF		
Mike Behrens	IPNF Fire Staff	(208) 659-1392	(208) 659-1392
Chad Hudson	Couer d'Alene RD		(208) 661-9119
Tom Fleer	IDL- Area Manager Pend Orielle	(208) 265-5104	(208) 610-3744
Shawn Hicks	IDL Fire Warden Pend Orielle	(208) 263-5104	(208) 304-4218
Sam Gibbons	Couer d'Alene RD DFMO	(208) 660-5547	
Erick Walker	Sand Point District Ranger		(208) 290-6698
Carolyn Blatz	KNF Helibase	(406) 283-7865	
Lydia Allen	Resource Advisor		(208) 215-9707
Tom Rummel	Sanders Co Sheriff	(406) 827-3584	ext 3
Bill Naegeli	Sanders Co Emergency Management	(406) 827-6955	(406) 827-2227
Clark Fork Fire Rescue		(208) 266-1377	
Search and Rescue	Rocky Mountain Response	(406) 529-9767	
Bob Howard	Bonner Co Emergency Management	(208) 265-8867	(208) 255-6901
Lincoln Co Emergency Mgt		(406) 293-6295	

CLARK FORK COMPLEX ICP @ AMBER BEAR INN

FAX: (406) 847-9971	FINANCE: (406) 690-4541
COMMO: (406) 847-9976	PLANS/DEMOB: (406) 847-9972
ORDERING: (406) 847-9975	SAFETY/OPS: (406) 847-9973

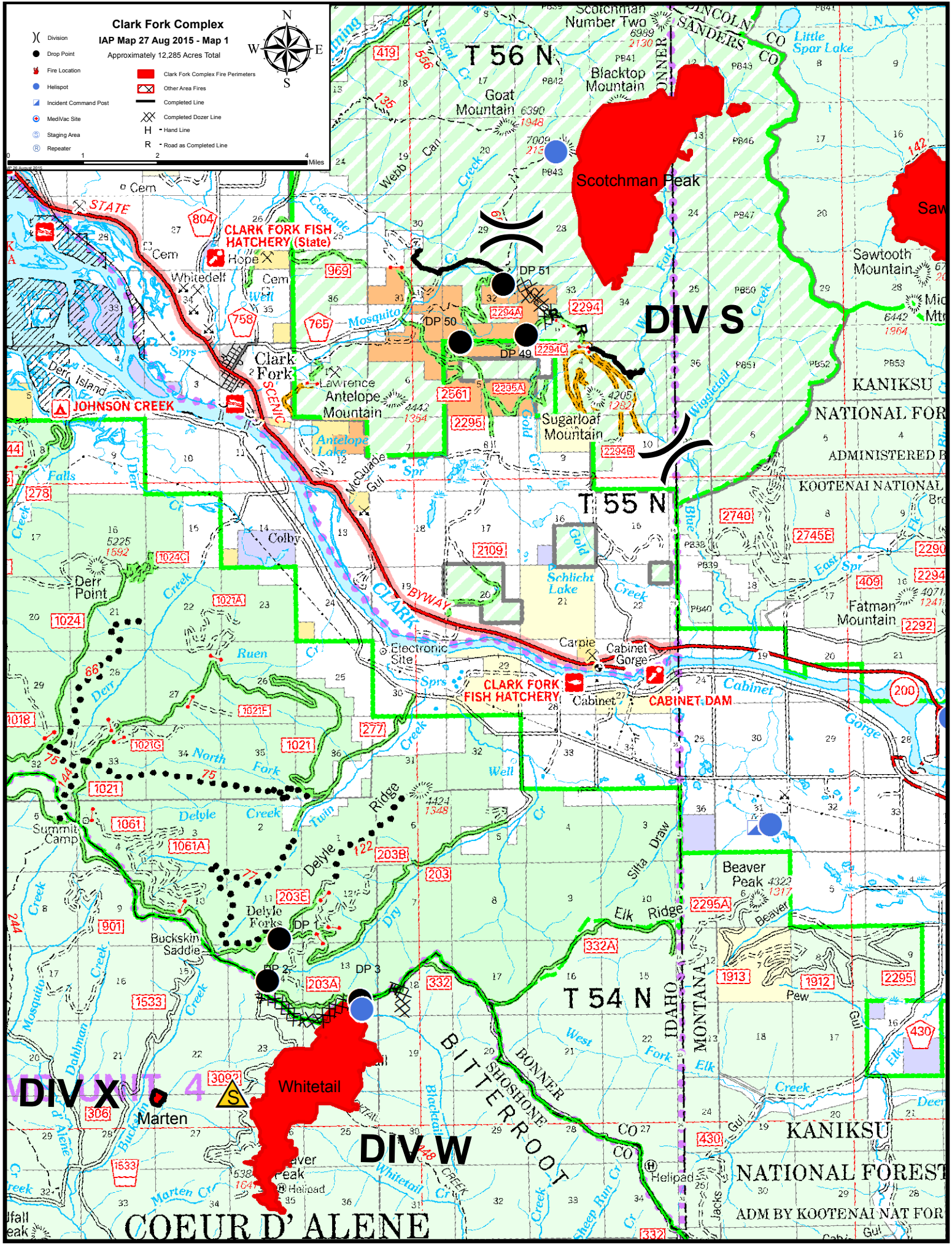
Clark Fork Complex

IAP Map 27 Aug 2015 - Map 1

Approximately 12,285 Acres Total



- (X) Division
- Drop Point
- Fire Location
- Helispot
- Incident Command Post
- Med/Vac Site
- Staging Area
- Repeater
- ▭ Clark Fork Complex Fire Perimeters
- ▭ Other Area Fires
- ▭ Completed Line
- ▭ Completed Dozer Line
- Hand Line
- Road as Completed Line



Clark Fork Complex IAP Map 27 Aug 2015 - Map 2

Approximately 12,285 Acres Total



- (X) Division
- Drop Point
- Fire Location
- Helispot
- Incident Command Post
- ⊕ Med/Vac Site
- ⊙ Staging Area
- ⊙ Repeater
- ▭ Clark Fork Complex Fire Perimeters
- ▭ Other Area Fires
- Completed Line
- Completed Dozer Line
- Hand Line
- Road as Completed Line

