



Clark Fork Complex Incident Action Plan Friday, September 4, 2015 Day 0600-2000 PDT Night 1800-2100 PDT

**ID-IPF-000923
P1J10X (0104)**



MAPS



IAP



LEADING UP

Looking out for our people includes not only those who work for us but also our leaders and peers. Leadership is about influencing others to accomplish tasks that are in the best interest of our organization which often means influencing those above us and leading up. Similarly, we are open to upward leadership – and, in fact, encourage and reward it.

Fire leaders are expected to lead in many directions, an expectation that increases complexity and risk.

- Summoning the courage needed to intervene and influence peers or leaders above can be difficult, especially if providing unwelcome feedback about behavior or pointing out an alternative to a potentially bad decision.
- In high-risk environments, no one can afford to assume that anyone has all the answers.

To build the kind of healthy and resilient culture required in the wildland fire service, we lead up – holding our leaders accountable, providing unvarnished situational awareness in challenging situations, and offering unbiased and viable alternatives.

Have a Safe Shift

INCIDENT OBJECTIVES	1. Incident Name Clark Fork Complex	2. Date 09/03/15	3. Time 1800
4. Operational Period: 09/04/15 Day: 0600-2000 PDT Night: 1800-2100 PDT			
<p>5. General Control Objectives for the Incident (include alternatives)</p> <p>Strategy Utilize a combination of confine/contain and point protection strategies to protect identified Values at Risk, given resources available.</p> <p>Incident Objectives</p> <ol style="list-style-type: none"> 1. Firefighter, aviation and public safety is the highest priority. Use sound risk management and hazard mitigation processes that weigh probability of success against human life exposure for EVERY management action taken. 2. Minimize threats/loss to all identified values including private property; public and private improvements; electronic and communication facilities; T&E species; watershed, riparian and wilderness areas; archeological and historical sites and the Star Peak Lookout. 3. Monitor current area, road and trail closures and provide recommendations to modify closures as warranted to ensure public safety. 4. Implement and update the Long Term Plan in coordination with the Forest(s) that protects Values at Risk, emphasizes firefighter and public safety and is commensurate with available resources. 5. Provide accurate and timely information to agencies, stakeholders and the public, through meetings, news releases, website updates, reports and personal contacts. 6. Keep costs commensurate with resource objectives through regular and ongoing cost analyses. 7. Coordinate initial attack response within the TFR area on the Idaho Panhandle and Kootenai National Forests. <p>Incident Requirements</p> <ol style="list-style-type: none"> 1. Minimize firefighter exposure in areas of standing dead timber throughout the fire areas. 2. Coordinate with the Agency Administrator or their representative when considering dozer line construction. 3. As can be accomplished safely, use minimum impact suppression tactics to maintain wilderness character and protect resources. Complete documentation of all intrusions (chainsaw use, pump use, helicopter landings/bucket drops) in WSAs. 4. All incoming and demobilizing crews, equipment, and vehicles must utilize a weed wash to prevent the introduction of invasive species. In addition to the equipment, crews will remove off-site soil and organic debris. All water delivery equipment will be cleaned prior to use and water sources must be approved by READS prior to cross-use. 5. All food and food waste must be stored in bear proof containers. All fire management activities will follow most recent Interagency Grizzly Bear Guidelines. 6. Maintain and enhance working relationships with partners, cooperators and stakeholders. 7. Coordinate with READs on the rehabilitation of areas impacted by fire management operations. 			
6. Weather Forecast for Period See Attached Weather Forecast			
7. General Safety Message: <p style="text-align: center;"><i>Our most important safety tool is our brain.</i></p>			
8. Attachments (mark if attached)			
<input checked="" type="checkbox"/> Organization List - ICS203	<input checked="" type="checkbox"/> Weather Forecast	<input checked="" type="checkbox"/> Safety Message	
<input checked="" type="checkbox"/> Div. Assignment Lists - ICS204	<input checked="" type="checkbox"/> Fire Behavior Forecast		
<input checked="" type="checkbox"/> Communications Plan - ICS205	<input checked="" type="checkbox"/> Incident Map	<input checked="" type="checkbox"/> Unit Log – ICS214	
<input checked="" type="checkbox"/> Medical Plan - ICS206	<input checked="" type="checkbox"/> Air Operations– ICS220		
9. Prepared by (Planning Section Chief) Al King	9. Approved by (Incident Commander) Diane Hutton		

ORGANIZATIONAL STRUCTURE CHART		9. Operations Section	
1. Incident Name Clark Fork Complex		Chiefs	Joe Sampson 9/9
2. Date 09/04/2015			Jeff Knudson 9/9
4. Operational Periods: DAY 0600-2000 Day PDT NIGHT 1800-2100 PDT			
5. Incident Commander and Staff			
		DIV A	Gen Campbell 9/9, David Tingley (t) 9/6
Incident Commander	Diane Hutton 9/9, Craig Glazier (t) 9/9	DIV Z	Ian Staley 9/9
Safety Officer	Dennis Talbert 9/4, Grant Godbolt 9/9, Kevin Boness(t) 9/13	DIV Y	Kevin Smith 9/9, Sara Knapp (t) 9/9
Information Officer	Bob MacGregor 9/9, Glenda Scott 9/9, Peri Suenram 9/9	DIV S/P/X	
6. Tribal and Agency Representatives		DIV W	John Olson O-50 9/8
Agency	Name	DIV T	Nate Stephens O-91 9/7
USFS Agency Administrator	Christine Dawe		
KNF Agency Rep	John Carlson		
IDL Area Manager	Tom Fleer		
READ	Lydia Allen 9/8, Brendan Naples		
7. Planning Section			
Chief	Al King 9/9, Joe Johndreau 9/12	A. Air Operations Branch	
Resources Unit	Jode Boyles Briggs 9/9	Branch Director	
Status Check In	Jennifer Burnham 9/5	Air Attack Supervisor	
SITL and DEMOB	Matt Dutton (t) 9/6		
Computer Technical	Kevin Watts 9/11	Helibase Manager	
GIS Specialist	Ray Backstrom 9/9, Molly Purnell 9/11, Katie Miller 9/7	Air Support Supervisor	Scott Plue 9/13, Steve Croy (t) 9/9
Fire Behavior	Steve Paes 9/14	Helicopter Coordinator	
LTAN	Tonja Opperman 9/10, Tim Bumgarner 9/15	Air Tanker Coordinator	
FOBS	Rebeca Swenson 9/11		
SOPL	Stu Hoyt 9/9		
IMET	Scott Carpenter 9/4, Ryan Leach 9/14		
8. Logistics Section			
Chief	Russ Riebe 9/9, Bill Lauer 9/9		
Ordering Manager	Mary Ann Hamilton 9/9		
Facilities	Adam Fisher 9/9		
Equipment Manager	Jeremiah Greene 9/10, Kevin Crawford 9/9	10. Finance	
Communications Unit	Todd Orr 9/9, Chris Gentili 9/12	Chief	Joyce Anderson 9/9
Medical Unit	Linda Barbee 9/9, Andrea Colson 9/10	Deputy	
Base Camp Manager	Aaron Ernsberger 9/14	Time Unit	Janis Bouma (t) 9/9
Supply Unit Leader		EQTR/PTRC	R. Johnson 9/9, J. Taylor 9/9
Food Unit	Kimberly Burch 9/10	Cost Unit	Kevin O.Brien 9/7
Receiving	Josh Dillard 9/12, Rebekah Luedtke 9/13		
Cabinet Spike Logistics	Mike Justus O-79 9/15, Perry Stebbins		
Prepared by: Jode Boyles Briggs RESL			

FIRE BEHAVIOR FORECAST

FORECAST NUMBER: #15	TYPE OF FIRE: Wildland Fires
FIRE NAME: Clark Fork Complex	OPERATIONAL PERIOD: Day 09/04/15
DATE ISSUED: 09/03/15	TIME ISSUED: 2000 hrs
UNIT: Sandpoint RD/Idaho Panhandle NF/ID & Cabinet RD/Kootenai NF/MT	SIGNED: Steve Paes, FBAN <i>/s/ Steve Paes</i>

INPUTS

WEATHER SUMMARY: Mostly cloudy with scattered showers and a chance for an isolated thunderstorm.
See Attached Weather Forecast for further information.
North ID/Southern Mtns ERC **Observed** for 9/03/15 **55**, 90th percentile is 72
Kootenai NF ERC **Observed** for 9/03/15 **53**, 90th percentile is 61

OUTPUTS

FIRE BEHAVIOR

GENERAL:

- Available fuels are primarily mixed conifer forests with heavy dead and down fuels. Bug-killed trees, snags and jackpots of heavy fuels are common. Marsh & valley bottoms burning readily and not a barrier. Moose moss has been a carrier of fire into the crown and spotting. Fuel models 8, 9 & 10. Estimated 1000 hr fuel moistures 10% & live fuel moisture 90%.
- Main fire behavior will consist of surface fire mostly creeping & smoldering but may have some limited spread (head, backing, flanking), very isolated single tree torching, and rollouts still possible. Burning out of heavy fuel jackpots and very minimal spotting. Spotting distance potential <0.1 mile mostly from tree to tree. Snags & fire weakened trees falling down.
- Watch for alignment of slope, winds and fuels for most active fire behavior.
- Burn period has been from 1000 to 1730 hrs.
- Probability of ignition with Fine Dead Fuel Moisture 9%: Shaded +/-30%.
- Rate of spread- 7 ch/hr. Flame length- 5 ft.

SPECIFIC:

Div A/Z: Expect minimal fire spread in the upper drainages of Star, Hamilton and South Fork Dry Creek drainages and north of Pillick Ridge. Fire north of Pillick Ridge will be exposed to northeast winds. Expect little surface fire spread, most spread will be from the burnout of jackpots in heavy dead/downed fuels and interior smoldering.

Div T: Little or no progression expected. Spread has been minimal, most of it in the form of creeping, smoldering, "cigarette" burning of logs and jackpots of heavy dead/downed fuels, limited single tree torching and rollouts. Little or no progression is expected down drainage toward the Ross Creek Cedars or further down into the Dry Creek drainage.

Div W: Expect fire behavior to be mostly creeping and smoldering of interior fuels. However, ridgetop winds may increase activity in exposed areas along the ridge on the southern tip by Beaver Peak.

Div Y: The persistent smokes on the top of the fire will be exposed to northeast winds. Expect these areas to show increased activity during the day.

AIR OPERATIONS: Gusty and erratic winds are possible with development of isolated thunderstorms.

SAFETY

Northeast winds will test drainages and slopes that had been sheltered from southwest winds on previous shifts. Watch for snags and fire weakened trees in these drainages that will be getting wind for the first time.



Clark Fork Complex Weather Forecast



FORECAST NO: 14 **NAME OF FIRE:** Clark Fork Complex
PREDICTION FOR: DAY SHIFT **UNIT:** Idaho Panhandle National Forest
SHIFT DATE: Friday, September 4, 2015 **SIGNED:** /s/ Scott J. Carpenter

TIME AND DATE **Incident Meteorologist**
FORECAST ISSUED: 2030 PDT Thursday, September 3, 2015 Scott J. Carpenter

WEATHER DISCUSSION: Rain and thunderstorm chances will be on the increase this afternoon, but temperatures will still warm to values close to those observed on Thursday. Relative humidity values will drop into the upper 20s and lower 30s at lower elevations by early afternoon. Winds will start out quite light and terrain driven, but will become northeast and increase with gusts to 20 mph at ridgetops and unsheltered areas by mid-afternoon.

WEATHER FORECAST: Mostly cloudy with scattered showers and a slight chance of thunderstorms after 1200.

HIGH TEMPERATURES:	2300-4000 ft.	60°-68°	(steady)
	4000-6000 ft.	53°-60°	
MINIMUM HUMIDITY:	2300-4000 ft	27%-34%	(3-5% drier)
	4000-6000 ft	34%-40%	

20 FT WINDS:
SHELTERED AREAS: Terrain driven 3-6 mph.
RIDGETOP/UNSHeltered AREAS: Northeast 6-10 mph, increasing to 10-15 mph with gusts to 20 mph after 1500.

HAINES INDEX (High Level): 2 (Very Low)

CWR (>0.10 Inch): 20%

LAL: 2

INVERSIONS/MIXING HEIGHT: Inversion depth 3000 ft MSL at 0800, increasing to 6000 ft MSL by 1100.

OUTLOOK:

FRIDAY NIGHT: Cloudy with rain showers likely and a slight chance for thunderstorms (CWR 40%). Low temperatures 39-44°F with humidity recoveries to 75-90%. 20 ft winds terrain driven at 4-6 mph, and Northeast 10-15 mph gusting to 25 mph at ridgetops and unsheltered mid-slopes.

SATURDAY AND SATURDAY NIGHT: Rain likely (CWR 80%) with a slight chance for afternoon thunderstorms. Snow possible on the higher elevations above 6500 ft, especially Saturday night. Highs 50-58°F below 4000 ft, and 40-50°F above 4000 ft. Minimum humidity values 50-60% below 4000 ft, and 65-80% above 4000 ft. Low temperatures 40-47°F with humidity recoveries to 85-100%. 20 ft winds terrain driven 4-7 mph in sheltered areas, and Northeast 12-16 mph with gusts to 20 mph at ridgetops and more unsheltered areas.

SUNDAY AND SUNDAY NIGHT: Rain showers likely early, then scattered showers and thunderstorms in the afternoon (CWR 30%). Highs 60-67°F below 4000 ft, and 50-60°F above 4000 ft. Humidity values dropping to 30-40% below 4000 ft, and 45-55% above 4000 ft. Lows Sunday night 40-46°F. Humidity recoveries to 60-75%. 20 ft winds in sheltered areas terrain driven 3-5 mph until 1100, then southwest at 6-10 mph with gusts to 14 mph. Ridgetops and more unsheltered south or west aspect slopes will have west-southwest winds 10-15 mph with gusts to 20 mph.

ASSIGNMENT LIST		1. Branch	2. Division/Group			
		A				
3. Incident Name		4. Operational Period				
Clark Fork Complex		Date: 09/04/2015		Time: 0600-2000		
5. Operations Personnel						
Operations Chief	Joe Sampson, Jeff Knudson		Division/Group Supervisor	Gen Campbell , David Tingley (t)		
Branch Director			Air Support Group Supervisor	Scott Plue Steve Croy (t)		
6. Resources Assigned This Period						
Strike Team/Task Force/ Resource Designator	Last Shift	Leader	No. Pers.	Trans. Needed	Drop Off PT./Time	Pick Up PT./Time
TFLD(t) O-152	9/12	Brian Krick	1	N	DP 21 0900	Cabinet Spike 1930
READ (Local IA)	9/3	Eric Pfalzer	1	N	DP 21 0700	Cabinet Spike 1930
EMTF O-119	9/10	Colson	1	N	DP 21 0700	Cabinet Spike 1930
T2IA Mississippi C-1	9/4	Barker, Black (t)	20	N	DP 21 0700	Cabinet Spike 1930
D7 District Crew (Local IA)		Chambers	3	N	DP 21 0700	Cabinet Spike 1930
T6 ENG Bull Lake #1230 E-58	9/4	Michael Reese	2	N	DP 21 0700	Cabinet Spike 1930
T5 ENG 242 E-112	9/14	Gordon Sabo	3	N	DP 21 0700	Cabinet Spike 1930
T2 WT Aqua Enterprises E-73	9/7	M. McNew	1	N	DP 21 0700	Cabinet Spike 1930
T3 DOZ Ibex 850G E-92	9/8	Mickey Weare	1	N	DP 20 0700	Cabinet Spike 1930
Ibex Transport Low Boy E-29	9/8	Chad Peterson	1	N	DP 20 0700	Cabinet Spike 1930
T3 Excavator Ibex E-93	9/8	Erik Weare	1	N	DP 21 0700	Cabinet Spike 1930
T2 Skidder Ibex w/transport E-113	9/8	J. Weare	1	N	DP 21 0700	Cabinet Spike 1930
7. Control Operations						
Continue line improvement and mop up along Dry Creek and private property. Continue pulling hose and sprinklers from division. Rehab identified lines as directed by operations.						
8. Special Instructions						
Ensure squelch is turned off to activate the code guard on Tactical Channel. DIVS: GPS fire line construction and bring data to GISS personnel.						
Function	Frequency - RX	Frequency - TX	Tone	Channel	Comments	
Command	170.4125	165.9625	141.3	7	ICP TO LINE	
Command						
Tactical	168.0500	168.0500	141.3	1		
Air to Ground	170.1125	170.1125		15		
Prepared by (RESL) Jode Boyles Briggs		Approved by (PSC-t)		Date 09/03/2015	Time 2200	

ASSIGNMENT LIST				1. Branch		2. Division/Group	
3. Incident Name				4. Operational Period			
Clark Fork Complex				Date: 09/04/2015		Time: 0600-2000	
5. Operations Personnel							
Operations Chief		Joe Sampson, Jeff Knudson		Division/Group Supervisor		Ian Staley	
Branch Director				Air Support Group Supervisor		Scott Plue ,Steve Croy (t)	
6. Resources Assigned This Period							
Strike Team/Task Force/ Resource Designator	Resource	Last Shift	Leader	No. Pers.	Trans. Needed	Drop Off PT./Time	Pick Up PT./Time
TFLD	O-142	9/10	Lawrence Thompson	1	N	East Fork Road 0700	Cabinet Spike 1930
TFLD(t)	O-143	9/10	Tamara Randall	1	N	East Fork Road 0700	Cabinet Spike 1930
FOBS	O-125	9/11	Rebeca Swenson	1	N	East Fork Road 0700	ICP 1930
FELB	(Local IA)	9/4	Jake Fallis	1	N	East Fork Road 0700	Cabinet Spike 1930
EMTF	O-127	9/11	Yellow Kidney	1	N	East Fork Road 0700	Cabinet Spike 1930
Falling Module	O-31	9/4	Westphal, Berryhill	2	N	East Fork Road 0700	Cabinet Spike 1930
Falling Module Jamison	O-30	9/4	Smith, Phillips	2	N	East Fork Road 0700	Cabinet Spike 1930
T6 ENG 50 FWS MSNXR	E-98	9/4	Eddie Harsh	2	N	East Fork Road 0700	Cabinet Spike 1930
T6 ENG NMSF	E-109	9/14	Larry Martinez	3	N	East Fork Road 0700	Cabinet Spike 1930
T6 ENG 631	E-111	9/14	Christina Kraetsch	3	N	East Fork Road 0700	Cabinet Spike 1930
T3 ENG AZ-HEL	E-110	9/14	Bob Eavenson	4	N	East Fork Road 0700	Cabinet Spike 1930
7. Control Operations							
Rehab fire line as identified by operations. Continue mop up to 100 feet.							
8. Special Instructions							
Take hourly weather observations and bring to ICP at end of shift. DIVS: GPS fire line construction and bring data to GISS personnel.							
Function	Frequency - RX	Frequency - TX	Tone	Channel	Comments		
Command	170.4125	165.9625	141.3	7			
Command							
Tactical	168.2000	168.2000	141.3	2			
Air to Ground	170.1125	170.1125		15			
Prepared by (RESL) Jode Boyles Briggs		Approved by (PSC-t)			Date 09/03/2015		Time 2200

ASSIGNMENT LIST				1. Branch		2. Division/Group	
						Y	
3. Incident Name			4. Operational Period				
Clark Fork Complex			Date: 09/04/2015		Time: 0600-2000		
5. Operations Personnel							
Operations Chief		Joe Sampson, Jeff Knudson		Division/Group Supervisor		Kevin Smith, Sara Knapp (t)	
Branch Director				Air Support Group Supervisor		Scott Plue, Steve Croy (t)	
6. Resources Assigned This Period							
Strike Team/Task Force/ Resource Designator	Resource	Last Shift	Leader	No. Pers.	Trans. Needed	Drop Off PT./Time	Pick Up PT./Time
TFLD	O-123	9/12	Kevin Clark	1	N	Hwy 56/200 0700	Cabinet Spike 1930
TFLD(t)	O-153	9/14	Greg Schenk	1	N	Hwy 56/200 0700	Cabinet Spike 1930
SOF2	O-70	9/9	Grant Godbolt	1	N	Hwy 56/200 0700	Cabinet Spike 1930
EMTF	O-25	9/5	Steven Williamson	1	N	Hwy 56/200 0700	ICP 1930
T2IA Custer Gallatin	C-13	9/8	R. Byrd, B. Koscelniak (t)	20	N	Hwy 56/200 0700	Cabinet Spike 1930
T2IA Santa Clara Regs	C-21	9/14	Thomas Naranjo	20	N	Hwy 56/200 0700	Cabinet Spike 1930
T6 ENG Rocky Mtn	E-75	9/13	Robert Nelson	3	N	Hwy 56/200 0700	Cabinet Spike 1930
T3 ENG Rocky Mountain	E-74	9/13	Frank Broad	4	N	Hwy 56/200 0700	Cabinet Spike 1930
Red Medic	E-26	9/5	Shane Brown	1	N	Hwy 56/200 0700	ICP 1930
7. Control Operations							
<p>Monitor movement of Government Fire. Mop up as needed along fire lines near private land.</p>							
8. Special Instructions							
<p>Take hourly weather observations and bring to ICP at end of shift. DIVS: GPS fire line construction and bring data to GISS personnel.</p>							
Function	Frequency - RX	Frequency - TX	Tone	Channel	Comments		
Command	170.4125	165.9625	141.3	7			
Command							
Tactical	168.6000	168.6000	141.3	3			
Air to Ground	170.1125	170.1125		15			
Prepared by (RESL)		Approved by (PSC-t)			Date		Time
Jode Boyles Briggs					09/03/2015		2200

ASSIGNMENT LIST		1. Branch	2. Division/Group				
3. Incident Name Clark Fork Complex		4. Operational Period Date: 09/03/2015				S/P/X	Time: 0600-2000
5. Operations Personnel							
Operations Chief	Joe Sampson, Jeff Knudson		Division/Group Supervisor				
Branch Director			Air Support Group Supervisor		Scott Plue, Steve Croy (t)		
6. Resources Assigned This Period							
Strike Team/Task Force/ Resource Designator	Last Shift	Leader	No. Pers.	Trans. Needed	Drop Off PT./Time	Pick Up PT./Time	
7. Control Operations							
UNSTAFFED							
8. Special Instructions							
Monitor fire movement by air.							
Function	Frequency - RX	Frequency - TX	Tone	Channel	Comments		
Command	170.4125	165.9625	141.3	7			
Command							
Tactical	168.6000	168.6000	141.3	3			
Air to Ground	162.6125	162.6125		14			
Prepared by (RESL) Jode Boyles Briggs		Approved by (PSC-t)		Date 09/02/2015		Time 2200	

ASSIGNMENT LIST			1. Branch		2. Division/Group			
3. Incident Name			4. Operational Period					
Clark Fork Complex			Date: 09/04/2015		Time: 0600-2000			
5. Operations Personnel								
Operations Chief		Joe Sampson, Jeff Knudson			Division/Group Supervisor		John Olson	
Branch Director					Air Support Group Supervisor		Scott Plue, Steve Croy (t)	
6. Resources Assigned This Period								
Strike Team/Task Force/ Resource Designator	Resource	Last Shift	Leader	No. Pers.	Trans. Needed	Drop Off PT./Time	Pick Up PT./Time	
SOF2	O-2.3	9/4	Dennis Talbert	1	N	DP 1 0700	ICP 1930	
T1 Bitterroot IHC Squad	C-14	9/9	Jay Wood	10	N	DP 1 0700	ICP 1930	
T3 DOZ Cat D4 Akre Logging	E-6	9/8	Akre	2	N	DP 1 0700	ICP 1930	
T3 Excavator with bucket	E-86	9/9	Quentin Jensen	1	N	DP 1 0700	ICP 1930	
T 2 Excavator	E-107	9/14	Colton Ward	1	N	DP 1 0700	ICP 1930	
Lippert Transport Lowboy w/E-86		9/9	John Lowry	1	N	DP 1 0700	ICP 1930	
7. Control Operations								
Rehab identified lines as directed by operations.								
8. Special Instructions								
Distribute gravel as identified by READs. Take hourly weather observations and bring to ICP at end of shift. DIVS: GPS fire line construction and bring data to GISS personnel.								
Function	Frequency - RX	Frequency - TX	Tone	Channel	Comments			
Command	170.4125	165.9625	141.3	7				
Command								
Tactical	166.7250	166.7250	141.3	4				
Air to Ground	162.6125	162.6125		14				
Prepared by (RESL) Jode Boyles Briggs		Approved by (PSC-t)			Date 09/03/2015		Time 2200	

ASSIGNMENT LIST		1. Branch	2. Division/Group				
3. Incident		4. Operational Period					
Clark Fork Complex		Date: 09/04/2015		Time: 0600-2000			
5. Operations Personnel							
Operations Chief	Joe Sampson, Jeff Knudson		Division/Group Supervisor	Nate Stephens			
Branch Director			Air Support Group Supervisor	Scott Plue, Steve Croy (t)			
6. Resources Assigned This Period							
Strike Team/Task Force/ Resource Designator	Resource	Last Shift	Leader	No. Pers.	Trans. Needed	Drop Off PT./Time	Pick Up PT./Time
TFLD	O-49	9/5	Ohlweiler	2	N	DP 20 0700	Cabinet Spike 1930
EMTF	O-119	9/10	Colson	1	N	DP 20 0700	Cabinet Spike 1930
T1 Bitterroot IHC Squad	C-14	9/9	Matt Michaliszyn	10	N	DP 20 0700	ICP 1930
D7 District Crew	(Local IA)		Matt Etienne	7	N	DP 20 0700	Cabinet Spike 1930
T6 ENG District Eng 472	(Local IA)		Stevens	3	N	DP 20 0700	Cabinet Spike 1930
7. Control Operations							
<p>Finish structure protection at Eagle View Estates. Implement protection plan for Ross Creek Cedars Scenic Area. Monitor Sawtooth Fire growth.</p>							
8. Special Instructions							
<p>Minimize suppression impacts to lower Ross Creek RNA, Spar Springs, and Ross Creek Wild and Scenic River Corridor. Take hourly weather observations and bring to ICP at end of shift. DIVS: GPS fire line construction and bring data to GISS personnel.</p>							
Function	Frequency - RX	Frequency - TX	Tone	Channel	Comments		
Command	170.4125	165.9625	141.3	7			
Command	167.7750	163.6875	141.3	6			
Tactical	166.7750	166.7750	141.3	5			
Air to Ground	170.1125	170.1125	15				
Prepared by (RESL)		Approved by (PSC-t)		Date	Time		
Jode Boyles Briggs				09/03/2015	2200		

ASSIGNMENT LIST			1. Branch		2. Division/Group		
					NS		
3. Incident Name			4. Operational Period				
Clark Fork Complex			Date: 09/04/2015		Time: 1800-2100		
5. Operations Personnel							
Operations Chief		Joe Sampson, Jeff Knudson		Division/Group Supervisor			
Branch Director				Air Support Group Supervisor		N/A	
6. Resources Assigned This Period							
Strike Team/Task Force/ Designator	Resource	Last Shift	Leader	No. Pers.	Trans. Needed	Drop Off PT./Time	Pick Up PT./Time
TFLD		9/4	Joel Sather	1	N	Highway 56/200 1900	Cabinet Spike 0700
Night Shift Medics	E-118	9/4	A. Nelson, J. Potter	2	N	Highway 56/200 1900	ICP 0700
T6 ENG Bull Lake 1260	E-83	9/4	Russ Bache	3	N	Highway 56/200 1900	ICP 0700
T6 ENG 621 Lake George	E-96	9/4	George Ross	2	N	Highway 56/200 1900	ICP 0700
T6 ENG OK-COA 8561	E-95	9/6	John Worthington	3	N	Highway 56/200 1900	ICP 0700
7. Control Operations							
No night shift 9/4-9/5.							
8. Special Instructions							
09/05/2015 night shift resources will report for duty at 1800 and be off shift at 2100; that will be the last evening shift for these resources. On 09/06/2015 engage in the established day, 0600, and report ICP at Amber Bear Inn for demob according to the schedule in the IAP.							
T6 ENG 621 Lake George transition with replacement crew.							
T6 ENG OK-COA 8561 report to assigned division.							
Function	Frequency - RX	Frequency - TX	Tone	Channel	Comments		
Command	170.4125	165.9625	141.3	7			
Command							
Tactical	166.7750	166.7750	141.3	5			
Air to Ground							
Prepared by (RESL)		Approved by (PSC-t)			Date		Time
Jode Boyles Briggs					09/03/2015		2200

AIR OPERATIONS SUMMARY

Prepared By: Steve Croy – ASGS(t)

09/03/2015

Prepared Time: 20:00

1. INCIDENT NAME: Clark Fork Complex	2. OPS PERIOD DATE: 09/04/2015	START TIME: 0600	END TIME: 2000	SUNRISE: 06:06 PDT 07:06 MDT	SUNSET: 19:20 PDT 20:20 MDT
3. REMARKS (Safety Notes, Hazards, Air Operations Special Equipment): - Communicate known flight hazards to your pilot: wires, towers, snags, other aircraft. - Aircraft requests will be made thru Line Operations. - AFTER Aug 15: Fed aircraft will cease tactical operations after sundown, flight after sunset will be only to ferry back to base. - Announce presence & monitor Goat Rock Cplx A/A in Bull River/MT56 corridor, Div Y,Z,A,T. - Available aircraft will come from Shoshone HB, Libby HB, or Coeur D'Alene when ordered.			4. READY ALERT AIRCRAFT MEDEVAC – Contact Clark Fork Complex ICP Communication with nature of emergency and request.		5. TFR's: Released end of shift Wed., Sept 2, 2015

6. PERSONNEL	NAME	PHONE #	7. FREQUENCIES	AM	FM	8. FIXED-WING- Type/ Make-Model/ N#/ Base																																																												
ASGS	Scott Plue	208-661-6619	Primary Air / Air	124.650		AIRTANKERS: Request thru Operations																																																												
ASGS (t)	Steve Croy	540-230-2568	Primary Air/Ground		162.6125	SEATS: Request thru Operations																																																												
			Secondary Air to Air	132.6750		ATGS AIRCRAFT: Request thru Operations																																																												
			Secondary Air/Ground		170.1125	Helispots & Dipsites: <table style="width: 100%; border-collapse: collapse;"> <thead> <tr> <th>Name</th> <th>Lat</th> <th>Long</th> <th>Elev</th> <th>Comments</th> </tr> </thead> <tbody> <tr> <td>Clark Fork HB</td> <td>48 03.496'</td> <td>116 00.923'</td> <td>2510'</td> <td>0.5mi east of ICP</td> </tr> <tr> <td>Heron Helispot</td> <td>48 04.496'</td> <td>115 57.813'</td> <td>2308'</td> <td>large field</td> </tr> <tr> <td>H2</td> <td>48 11.933'</td> <td>115 51.687'</td> <td>2370'</td> <td>same as DP20</td> </tr> <tr> <td>H30</td> <td>48 01.470'</td> <td>116 08.529'</td> <td>4850'</td> <td>same as DP3</td> </tr> <tr> <td>Dry Ck Helispot</td> <td>48 04.361'</td> <td>116 06.276'</td> <td>2285'</td> <td>FS seed orchard</td> </tr> <tr> <td>Dip 1</td> <td>47 58.88'</td> <td>116 13.52'</td> <td>3405'</td> <td>Div W</td> </tr> <tr> <td>Dip 2</td> <td>48 04.018'</td> <td>115 48.324'</td> <td>2250'</td> <td>Div Y,Z</td> </tr> <tr> <td>Dip 3</td> <td>48 05.069'</td> <td>115 46.923'</td> <td>2270'</td> <td>Div Y,Z</td> </tr> <tr> <td>Dip 4</td> <td>48 06.514'</td> <td>115 49.096'</td> <td>2310'</td> <td>pond 8mi Div Z,A</td> </tr> <tr> <td>Dip 5</td> <td>48 07.28'</td> <td>115 51.73'</td> <td>2325'</td> <td>Div A</td> </tr> <tr> <td>Dip 6</td> <td>48 13.105'</td> <td>115 51.156'</td> <td>2331'</td> <td>Bull Lake Div T</td> </tr> </tbody> </table>	Name	Lat	Long	Elev	Comments	Clark Fork HB	48 03.496'	116 00.923'	2510'	0.5mi east of ICP	Heron Helispot	48 04.496'	115 57.813'	2308'	large field	H2	48 11.933'	115 51.687'	2370'	same as DP20	H30	48 01.470'	116 08.529'	4850'	same as DP3	Dry Ck Helispot	48 04.361'	116 06.276'	2285'	FS seed orchard	Dip 1	47 58.88'	116 13.52'	3405'	Div W	Dip 2	48 04.018'	115 48.324'	2250'	Div Y,Z	Dip 3	48 05.069'	115 46.923'	2270'	Div Y,Z	Dip 4	48 06.514'	115 49.096'	2310'	pond 8mi Div Z,A	Dip 5	48 07.28'	115 51.73'	2325'	Div A	Dip 6	48 13.105'	115 51.156'	2331'	Bull Lake Div T
Name	Lat	Long	Elev	Comments																																																														
Clark Fork HB	48 03.496'	116 00.923'	2510'	0.5mi east of ICP																																																														
Heron Helispot	48 04.496'	115 57.813'	2308'	large field																																																														
H2	48 11.933'	115 51.687'	2370'	same as DP20																																																														
H30	48 01.470'	116 08.529'	4850'	same as DP3																																																														
Dry Ck Helispot	48 04.361'	116 06.276'	2285'	FS seed orchard																																																														
Dip 1	47 58.88'	116 13.52'	3405'	Div W																																																														
Dip 2	48 04.018'	115 48.324'	2250'	Div Y,Z																																																														
Dip 3	48 05.069'	115 46.923'	2270'	Div Y,Z																																																														
Dip 4	48 06.514'	115 49.096'	2310'	pond 8mi Div Z,A																																																														
Dip 5	48 07.28'	115 51.73'	2325'	Div A																																																														
Dip 6	48 13.105'	115 51.156'	2331'	Bull Lake Div T																																																														
			Goat Rock Cplx Air/Air	127.2500																																																														
			Goat Rock Cplx Air/Ground		166.3625																																																													
NOTE: Aircraft requests are placed through Coeur d'Alene Dispatch. Plan ahead for timely arrival of aircraft, ferry flights approx 20-30 min.																																																																		
			Air Guard		168.6250 TX tone 110.9																																																													

FAA N#	T Y	MAKE/ MODEL	BASE	MGR	AVAIL	REMARKS	FAA N#	T Y	MAKE/ MODEL	BASE	MGR	AVAIL	REMARKS
N793HT	1	CH-54A	Libby (S59)		0800	Skycrane	N184CH	1	BV-107-II	Shoshone		0800	Vertol
N9122Z	2	Bell 212HP	Libby (S59)		0800		N192CH	1	BV-107-II	Shoshone		0800	Vertol
N144MA	3	Bell 407	Libby (S59)		0800	Kootenai EU	N17HX	2	Bell 205 A-1	Shoshone		0800	Durango EU
N19BH	3	Bell 206 L-4	Libby (S59)		0800	Goat Rock Cplx	N6148U	3	Bell 407	Shoshone		0800	
							N20HX	3	AS-350 B3	Shoshone		0800	Panhandle EU

NOTE:

10. TASK/ MISSION/ ASSIGNMENT (Type/ function includes: Air Tactical, Retardant, Recon, Personnel Transport, Bucket Operations, SAR, etc.)													
Missions: OPS, FBAN/LTAN/FOBS recon(s)													

SAFETY MESSAGE

Incident: Clark Fork Complex Date: September 4, 2015

Operational Period: Day Shift

A PROCEDURAL APPROACH TO SAFETY

In a fire situation there are subjective hazards that we as firefighters create, and there are objective hazards such as fire entrapment, snags, rolling debris, and terrain that are inherent to firefighting. Hazards either subjective or objective have the potential to be reduced with proper mitigations. The possibility of injury or entrapment is always there, the probability may be large or small. We must take steps to reduce the risks associated with our actions. By using a risk assessment process before and during the operational period, we can minimize exposure to hazards and better ensure our safety by taking the following steps:

**Determine what the assignment is
Identify the hazards
Analyze the risks
Implement steps to ensure safety
Re-analyze the situation as it changes**

Mitigate the Hazards Examples

**High Temperatures and Low Humidity – Drink plenty of water.
Dry Fuels/heavy fuel loads – Post look-outs, identify safety zones and escape routes.
Spot Fires -- Post look-outs, identify safety zones and escape routes.
Steep slopes/rolling debris – Use spotters and lookouts, avoidance.
Vehicle travel to and from fire – buckle seatbelts, obey posted speed limits, turn on vehicle headlights. Drive defensively for existing conditions.**

Safety is a matter of common sense and a deliberate process of risk analysis and mitigation. Use it and you will keep yourself and others out of trouble and get the job done safely. Safety is your responsibility!

Safety Officers: Kevin Boness, Dennis Talbert, Grant Godbolt and you.

MEDICAL PLAN (ICS 206 WF)

1. Incident/Project Name		2. Operational Period						
Clark Fork Complex		Date/ Time 9-4-2015		0600-2100				
3. Ambulance Services								
Name	Complete Address	Phone & EMS Frequency		Advanced Life Support (ALS)				
				Yes	No			
Noxon Ambulance Service	Noxon, Montana	911			NO			
Clark Fork Ambulance	Clark Fork, ID	911 208-266-1574		YES				
Libby Volunteer Ambulance	Libby, Montana	911 406-293-4112		YES				
Bonner Emergency EMS	Sandpoint, Idaho	911 208-255-2194		YES				
Troy Volunteer Ambulance	205 3 rd St., Troy, MT	911 406-295-6505		YES				
4. Air Ambulance Services								
Name	Phone	Type of Aircraft & Capability						
Life Flight Network	800-232-0911	Rotor and fixed wing , ALS with night capabilities						
Sandpoint or Coeur d' Alene, ID Alert Air Rescue, Kallispell MT	406-752-9797	Helicopter, ALS with night capabilities						
Two Bear Air Flathead County	406-758-5610	Dispatched through Flathead County Sheriff's Dispatch. This is a SAR/Extraction ship with Hoist, Short Haul, and night capabilities. <NOT AN AIR AMBULANCE> Must be rendezvoused with ALS Ambulance, air or ground.						
Northwest Medstar, Missoula, MT	800-5723201	Rotor and Fixed Wing, ALS with night capabilities						
5. Hospitals								
Name Complete Address	GPS Datum – WGS 84 Coordinate Standard Degrees Decimal Minutes DD° MM.MMM' N - Lat DD° MM.MMM' W - Long		Travel Time Air Gnd		Phone	Helipad Yes No		Level of Care Facility
Harbor View Med Center 325 Ninth Ave. Seattle, WA	Lat: Long:	47 36.19 N 122 19.50 W	2.5 hrs	N/A	206-744-3000	X		Trauma 1- Burn Center
Cabinet Peaks Med Center 209 Health Park Dr. Libby, MT	Lat: Long:	48 23.520 N 115 32.42 W			406-283-7000	X		Critical Access
Bonner General, 520 N 3 rd Ave, Sandpoint, ID 83864	Lat: Long:	48 16.651 116 33.000	15-20 min	45-60 min	208-263-1441	<input checked="" type="checkbox"/>	<input type="checkbox"/>	Critical Access
Kootenai Medical 203 Lincoln Way, Coeur d' Alene.83814	Lat: Long:	47 41.721 N 116 47.659 W	25 min	60-90 min	208-666-2000	<input checked="" type="checkbox"/>	<input type="checkbox"/>	Level 2 Trauma
Kalispell Regional Hospital, 310 Sunny View Lane, Kalispell, MT	Lat: Long:	48 12.799N 114 19.441 W			406-752-5111	<input checked="" type="checkbox"/>	<input type="checkbox"/>	Trauma Level 3
6. Division Branch Group			Area Location Capability					
ICP / Medical Unit Sanders County Search and Rescue ICP- 406-847-2193			EMS Responders & Capability:		MEDL and Paramedic at night.			
			Equipment Available on Scene:		First Aid and Basic Life Support days, ALS at night			
			Medical Emergency Channel:		Command			
			Ambulance to Scene		45 minutes			
			Air:		30 min			
			Approved Helispot:		Yes. Clark Fork Helibase 0.5 miles east of ICP			
			Lat:		43 03.532 N 2500 feet			
			Long:		116 00.984 W			

MEDICAL PLAN (ICS 206 WF)

DIV A	EMS Responders & Capability:	1 EMT-F Basic Life Support (covering DIV A and DIV T)		
	Equipment Available on Scene:	BLS equipment and First Aid supplies		
	Medical Emergency Channel:	Command		
	ETA for Ambulance to Scene:			
	Air:	45 min		
	Approved Helispot:	H2, gravel pit at drop point 20, 0.10 miles west MT Hwy 56		
	Lat:	48 11.933 N		
	Long:	115 51.687 W		
DIV Z	EMS Responders & Capability:	1 EMT-F Basic Life Support		
	Equipment Available on Scene:	Basic Life Support equipment and first aid supplies		
	Medical Emergency Channel:	Command		
	ETA for Ambulance to Scene:			
	Air:	45 min		
	Approved Helispot:	H2, gravel pit at drop 20, 0.10 miles west MT Hwy 56		
	Lat:	48 11.933 N		
	Long:	115 51.687 W		
DIV Y	EMS Responders & Capability:	Red Medic (EMP-F) and EMT-F		
	Equipment Available on Scene:	ALS and BLS equipment and First Aid Supplies		
	Medical Emergency Channel:	Command		
	ETA for Ambulance to Scene:	15 minutes		
	Air:			
	Approved Helispot	Old Heron staging area on HWY 200		
	Lat:	48 04.542 N		
	Long:	115 57.894 W		
DIV T	EMS Responders & Capability:	EMT-F Basic Life Support (covering DIV A and T)		
	Equipment Available on Scene:	Basic Life Support equipment and first aid supplies.		
	Medical Emergency Channel:	Command		
	ETA for Ambulance to Scene:			
	Approved Helispot	H2 Gravel Pit		
	Lat:	48 11.933 N		
	Long:	115 51.687 W		
DIV S	EMS Responders & Capability:	No EMS staged		
	Equipment Available on Scene:	None		
	Medical Emergency Channel:	Command		
	ETA for Ambulance to Scene:			
	Air:			
	Approved Helispot :	Old Heron staging		
	Lat:	48 4.575 N		
Long:	115 58.271 W			
DIV W	EMS Responders & Capability	No EMS providers staged		
	Equipment Available on Scene:			
	Medical Emergency Channel:	Command		
	ETA for Ambulance to Scene:			
	Air:			
	Approved Helispot:	DP 3		
	Lat:	48 01.470 N		
Long:	116 08.529 W			
7. Prepared By: MEDL		8. Date/Time	9. Reviewed By (Safety Officer)	10. Date/Time
Linda Barbee, MEDL		09/03/2015 2000 hrs.	Kevin Boness, SAFETY	09/03/2015 @ 2000 hrs.

Clark Fork Complex

Incident within an Incident Emergency Action Plan

In the case of a serious accident requiring patient transport to a medical facility:

- The closest ranking Operations Leader (i.e. Division Supervisor) at the accident scene will take charge and be the Point of Contact (POC).
- Mobilize the closest paramedic/EMT to the scene by ground or air to treat the patient(s) and package for transport.
- Use the Medical Plan ICS 206WF and Incident Medical Report Form in the IAP to collect and document patient information, communicate with ICP Communications and plan for two types of transport (ground and air).
- Operations Section Chief (Line or Plans) will direct medical emergency response from ICP or on-scene.
- Upon notification of a serious accident, the Incident Commander, Safety Officer, Operations Section Chief (Plans), Air Support Group Supervisor and Medical Unit Leader will report to the ICP Communications.
- Incident Communications will call 911 **on a land line** for Sanders County Dispatch to coordinate patient transportation by ground ambulance. If an air ambulance is needed, Incident Communications will call Coeur d' Alene Dispatch Center on Channel 10 to request an air ambulance.
- All other Command and General Staff will go to ICP communications to monitor the situation and be available if needed to assist.
- Incident Radio traffic will be monitored 24 hours a day at the Clark Fork ICP.

Approved by: Craig Glazier

Date: 08/31/2015



Incident Commander(t)

INCIDENT RADIO COMMUNICATIONS PLAN	1. Incident Name	2. Date/ Time Prepared	3. Operational Period Date/Time
---	------------------	------------------------	---------------------------------

4. Basic Radio Channel Utilization
Mode: W=Wideband Analog, N=Narrowband Analog, D=Digital, M=Mixed

Channel	Function	RX:	Frequency	Tone	Mode	Assignment	Remarks
1		TX:					
2		TX:					
3		TX:					
4		TX:					
5		TX:					
6		TX:					
7		TX:					
8		TX:					
9		TX:					
10		TX:					
11		TX:					
12		TX:					
13		TX:					
14		TX:					
15		TX:					
16		TX:					

5. Prepared by (Communications Unit)

CLARK FORK COMPLEX ICP

FAX: (406) 847-9971
COMMO: (406) 847-9976
ORDERING: (406) 847-9975

FINANCE: (406) 690-4541
PLANS/DEMOB: (406) 847-9972
SAFETY/OPS: (406) 847-9973

CLARK FORK COMPLEX HUTTON IMT COMMAND AND GENERAL STAFF

		<u>Land Line</u>	<u>Cell</u>
Diane Hutton	Incident Commander		(406) 660-2324
Craig Glazier	Incident Commander (t)		(208) 659-1131
Grant Goldbolt	Safety Officer		(406) 491-2562
Dennis Talbert	Safety Officer		(208) 553-8466
Bob MacGregor	Information Officer	(406) 847-9974	(603) 568-9893
Glenda Scott	Information Officer		(406) 210-9225
Peri Suenram	Information Officer	(406) 827-0731	(406) 370-2144
Al King	Plans Section Chief	(406) 847-9972	(208) 866-3662
Joyce Anderson	Finance Section Chief	(406) 690-4541	(406) 690-4541
Russ Riebe	Logistics Section Chief		(406) 949-9766
Bill Lauer	Logistics Section Chief		(218) 244-9763
Joe Sampson	Operations Section Chief		(406) 491-0884
Jeff Knudson	Operations Section Chief	(406) 847-9973	(208) 940-1107
Steve Croy	Air Support Supervisor (t)	(406) 847-9973	(540) 230-2568
Marshall Plue	Air Support Supervisor (t)	(406) 847-9973	(208) 661-6619
Linda Barbee	Medical Unit Leader		(406) 425-0589
Scott Carpenter	Incident Meteorologist		(307) 640-2362

AGENCIES

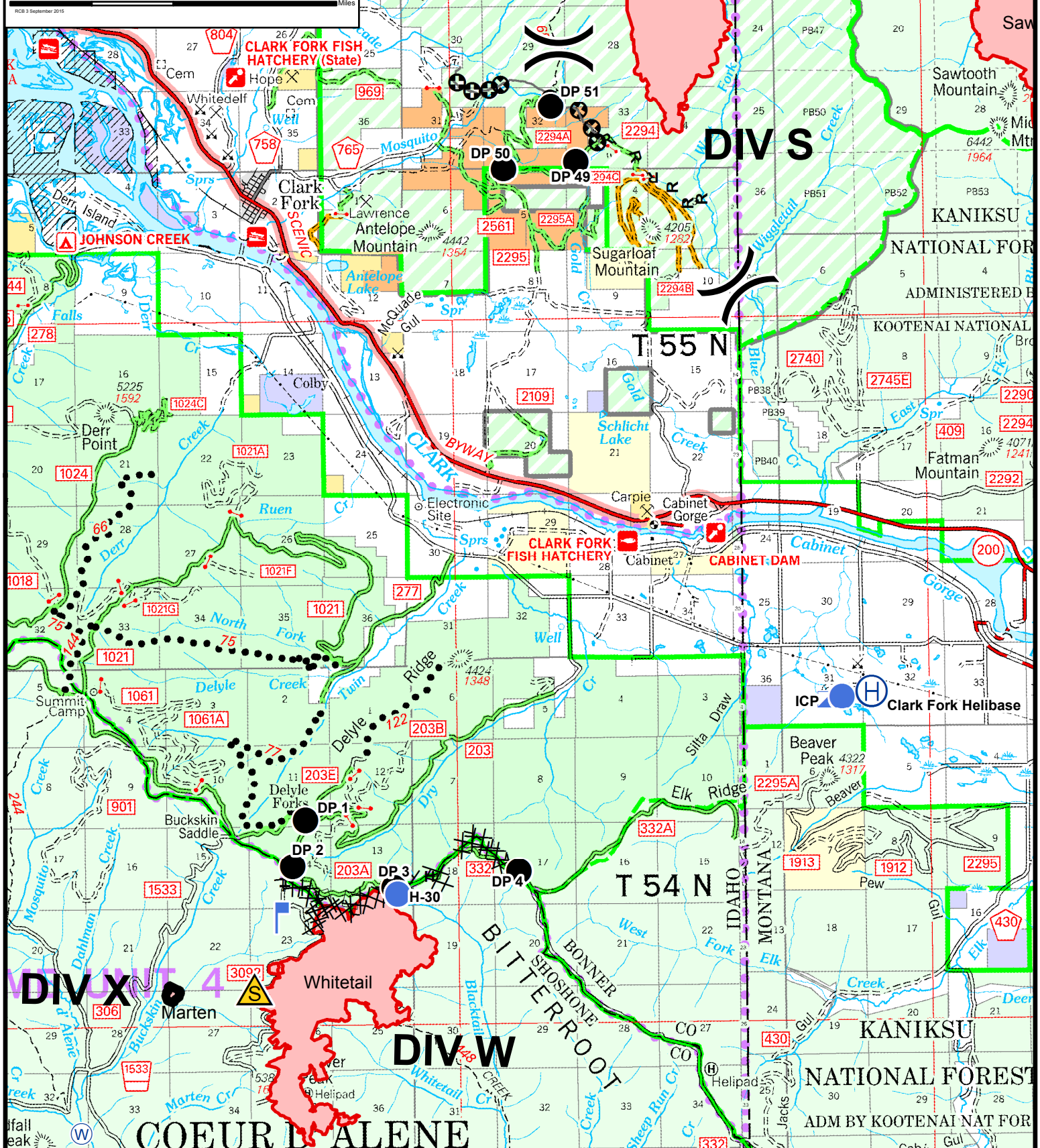
Christine Dawe	Clark Fork Agency Administrator	-	(406) 370-8865
John Carlson	KNF Agency Representative	(406) 827-3533	
Celeste Hancock	Dispatch Center Manager C'dA	(208) 762-6904	(208) 659-1346
Heather Good	Incident Business Manager IPNF	(208) 983-4096	(208) 451-4207
Terri Tangen	Incident Business Manager KNF		
Mike Behrens	IPNF Fire Staff	(208) 659-1392	(208) 659-1392
Chad Hudson	Couer d'Alene RD		(208) 661-9119
Tom Fleer	IDL- Area Manager Pend Orielle	(208) 265-5104	(208) 610-3744
Shawn Hicks	IDL Fire Warden Pend Orielle	(208) 263-5104	(208) 304-4218
Sam Gibbons	Couer d'Alene RD DFMO	(208) 660-5547	
Erick Walker	Sand Point District Ranger		(208) 290-6698
Carolyn Blatz	KNF Helibase	(406) 283-7865	
Lydia Allen	Resource Advisor		(208) 215-9707
Tom Rummel	Sanders Co Sheriff	(406) 827-3584	ext 3
Bill Naegeli	Sanders Co Emergency Management	(406) 827-6955	(406) 827-2227
Clark Fork Fire Rescue		(208) 266-1377	
Search and Rescue	Rocky Mountain Response	(406) 529-9767	
Bob Howard	Bonner Co Emergency Management	(208) 265-8867	(208) 255-6901
Lincoln Co Emergency Mgt		(406) 293-6295	

Clark Fork Complex

IAP Map 4 Sep 2015 - Map 1

15,754 Acres Total

() Division	XXXXXX Completed Dozer Line
● Drop Point	— Completed Line
○ Helispot	R — Road as Completed Line
⊕ Lookout	— Escape Route
⊕ Repeater	⊕ Masticator / Feller Buncher Line
⊕ Staging Area	H — Hand Line
⊕ Water Source	▭ Fire Perimeter
⊕ Safety Zone	



Clark Fork Complex Demob Process

- **All releases will go through Logistics, Finance, and Demobilization at Clark Fork Complex ICP ~ no releases will be processed at Cabinet Spike Camp.**
- Extensions for crews/overheads/equipment will be submitted 3 days **prior** to last shift; including contractors.
- Releases needing transport by air will require at least **72 hours advance notice** from Section Chiefs, or their designees, to the Demobilization Unit.
- Vehicle transport releases will require Vehicle transport releases will require **24 hours** advance notice from Section Chiefs, or their designees, to the Demobilization Unit.
- Demob will occur in the AM after 0800 PDT
- No demob will occur Monday, Wednesday, Friday between 1400 – 1500PDT
- Check Demob Schedule for resources demob time.
 - Crews demobing will be scheduled ½ hour apart
 - Overhead demobing will be scheduled 15 min apart
 - **Please be on time. Early arrivals will be asked to wait until their scheduled time.**
- **BE SURE THAT ALL OF YOUR TIME HAS BEEN SUBMITTED PRIOR TO YOUR SCHEDULED DEMOB TIME AND BRING YELLOW COPIES OF CTR'S WITH YOU.**
 - AD Resources – if you have not provided your AD paperwork to the Clark Fork ICP Finance division please bring your paperwork with you.

Thank You and Travel Safe

**Clark Fork Complex
Demobilization Schedule**

9/4/2015

INCIDENT TIME <i>Pacific</i>	RESOURCE NAME	REQUEST #	POS	MODE OF TRAVEL
800	Wilderness Medics	E-30	ALS	POV
800	Backwoods Excavator	E-76	EQUIP	POV
830	Carvey Enterprise		T3 DOZ	POV
845	Castle Mtn	E-97	ENG6	POV
1500	Mississippi	C-1	T2IA	AIR
1830	Carpenter, Scott	O-11	IMET	REN

**Clark Fork Complex
Pending Demobilization Schedule**

9/5/2015

INCIDENT TIME <i>Pacific</i>	RESOURCE NAME	REQUEST #	POS	MODE OF TRAVEL
800	Lake George E-621: Elizabeth Ramirez and George Ross Jr	E-96	ENG6	AOV
815	50 FWS MSN XR	E-98	ENG6	AOV
830	Talbert, Dennis	O-2.3	SOF2	POV
845	Williamson, Steven	O-25	EMTF	PAS
900	T3 Engine Bull Lake 1260	E-83	ENG3	PVT
915	Potter, J	E-118	RES	POV
915	Nelson, A	E-118	RES	POV
930	Bull Lake #1230	E-58	ENG6	POV
945	Engine 8561	E-95	ENG6	AOV
1000	Sather, Joel		TFLD	AOV
1015	Wilderness Medics	E-26	RES	POV
1100	Westphal/Berryhill	O-30	FAL1	POV
1115	Smith/Phillips	O-31	FAL1	POV
1130	Fallis, Jake		FELB	POV
1900	Burnham, Jennifer	O-48	SCKN	AIR

Medical Incident Report

FOR ALL MEDICAL EMERGENCIES: IDENTIFY ON SCENE INCIDENT COMMANDER BY NAME AND POSITION AND ANNOUNCE "MEDICAL EMERGENCY" TO INITIATE RESPONSE FROM IMT COMMUNICATIONS/DISPATCH.

Use items one through nine to communicate situation to communications/dispatch.

1. CONTACT COMMUNICATIONS/DISPATCH

Ex: "Communications, Div. Alpha. Stand-by for Priority Medical Incident Report." (If life threatening request designated frequency be cleared for emergency traffic.)

2. INCIDENT STATUS: Provide incident summary and command structure.

Nature of Injury/Illness		<i>Describe the injury (Ex: Broken leg with bleeding)</i>
Incident Name		<i>Geographic Name + "Medical" (Ex: Trout Meadow Medical)</i>
Incident Commander		<i>Name of IC</i>
Patient Care		<i>Name of Care Provider (Ex: EMT Smith)</i>

3. INITIAL PATIENT ASSESSMENT: Complete this section for each patient. This is only a brief, initial assessment. Provide additional patient info after completing this 9 Line Report.

Number of Patients:	Male / Female	Age:	Weight:
Conscious? <input type="checkbox"/> YES <input type="checkbox"/> NO = MEDEVAC!			
Breathing? <input type="checkbox"/> YES <input type="checkbox"/> NO = MEDEVAC!			
Mechanism of Injury: <i>What caused the injury?</i>			
Lat/Long (Datum WGS84) <i>Ex: N 40° 42.45' x W 123° 03.24'</i>			

4. SEVERITY OF EMERGENCY, TRANSPORT PRIORITY

SEVERITY	TRANSPORT PRIORITY
<input type="checkbox"/> URGENT-RED Life threatening injury or illness. <i>Ex: Unconscious, difficulty breathing, bleeding severely, 2° – 3° burns more than 4 palm sizes, heat stroke, disoriented.</i>	Ambulance or MEDEVAC helicopter. Evacuation need is IMMEDIATE.
<input type="checkbox"/> PRIORITY-YELLOW Serious Injury or illness. <i>Ex: Significant trauma, not able to walk, 2° – 3° burns not more than 1-2 palm sizes.</i>	Ambulance or consider air transport if at remote location. Evacuation may be DELAYED.
<input type="checkbox"/> ROUTINE-GREEN Not a life threatening injury or illness. <i>Ex: Sprains, strains, minor heat-related illness.</i>	Non-Emergency. Evacuation considered Routine of Convenience.

5. TRANSPORT PLAN:

Air Transport: (Agency Aircraft Preferred)

<input type="checkbox"/> Helispot	<input type="checkbox"/> Short-haul/Hoist	<input type="checkbox"/> Life Flight	<input type="checkbox"/> Other
-----------------------------------	---	--------------------------------------	--------------------------------

Ground Transport:

<input type="checkbox"/> Self-Extract	<input type="checkbox"/> Carry-Out	<input type="checkbox"/> Ambulance	<input type="checkbox"/> Other
---------------------------------------	------------------------------------	------------------------------------	--------------------------------

6. ADDITIONAL RESOURCE/EQUIPMENT NEEDS:

<input type="checkbox"/> Paramedic/EMT(s)	<input type="checkbox"/> Crew(s)	<input type="checkbox"/> SKED/Backboard/C-Collar
<input type="checkbox"/> Burn Sheet(s)	<input type="checkbox"/> Oxygen	<input type="checkbox"/> Trauma Bag
<input type="checkbox"/> Medication(s)	<input type="checkbox"/> IV/Fluid(s)	<input type="checkbox"/> Cardiac Monitor/AED
<input type="checkbox"/> Other (i.e. splints, rope rescue, wheeled litter)		

7. COMMUNICATIONS:

Function	Channel Name/Number	Receive (Rx)	Tone/NAC *	Transmit (Tx)	Tone/NAC *
<i>Ex: Command</i>	<i>Forest Rpt, Ch. 2</i>	<i>168.3250</i>	<i>110.9</i>	<i>171.4325</i>	<i>110.9</i>
COMMAND					
AIR-TO-GRND					
TACTICAL					

*(NAC for digital radio system)

8. EVACUATION LOCATION:

Lat/Long (Datum WGS84) <i>EX: N 40 42.45' x W 123 03.24'</i>	
Patient's ETA to Evacuation Location:	
Helispot/Extraction Size and Hazards:	

9. CONTINGENCY:

Considerations: <i>If primary options fail, what actions can be implemented in conjunction with primary evacuation method? Be thinking ahead...</i>	REMEMBER: Confirm ETA's of resources ordered Act according to your level of training Be Alert. Keep Calm. Think Clearly. Act Decisively.
--	--