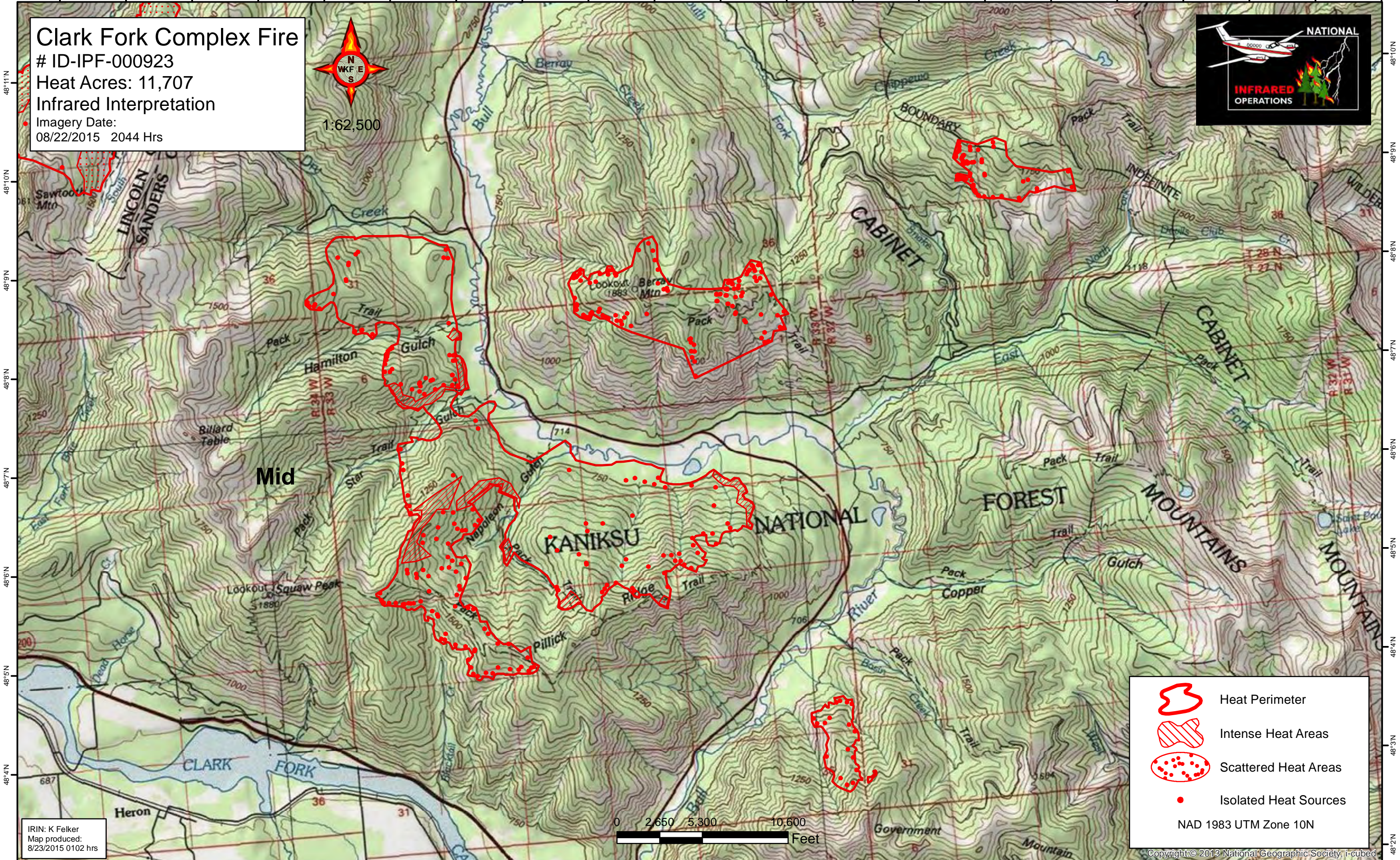


115°58'W 115°57'W 115°56'W 115°55'W 115°54'W 115°53'W 115°52'W 115°51'W 115°50'W 115°49'W 115°48'W 115°47'W 115°46'W 115°45'W 115°44'W 115°43'W 115°42'W 115°41'W 115°40'W 115°39'W 115°38'W

Clark Fork Complex Fire
ID-IPF-000923
Heat Acres: 11,707
Infrared Interpretation
Imagery Date:
08/22/2015 2044 Hrs



Mid





KANIKSU

NATIONAL

FOREST

MOUNTAINS

MOUNTAINS

-  Heat Perimeter
-  Intense Heat Areas
-  Scattered Heat Areas
-  Isolated Heat Sources

NAD 1983 UTM Zone 10N



IRIN: K Felker
Map produced:
8/23/2015 0102 hrs

Copyright © 2013 National Geographic Society, i-cubed

115°59'W 115°58'W 115°57'W 115°56'W 115°55'W 115°54'W 115°53'W 115°52'W 115°51'W 115°50'W 115°49'W 115°48'W 115°47'W 115°46'W 115°45'W 115°44'W 115°43'W 115°42'W 115°41'W 115°40'W