

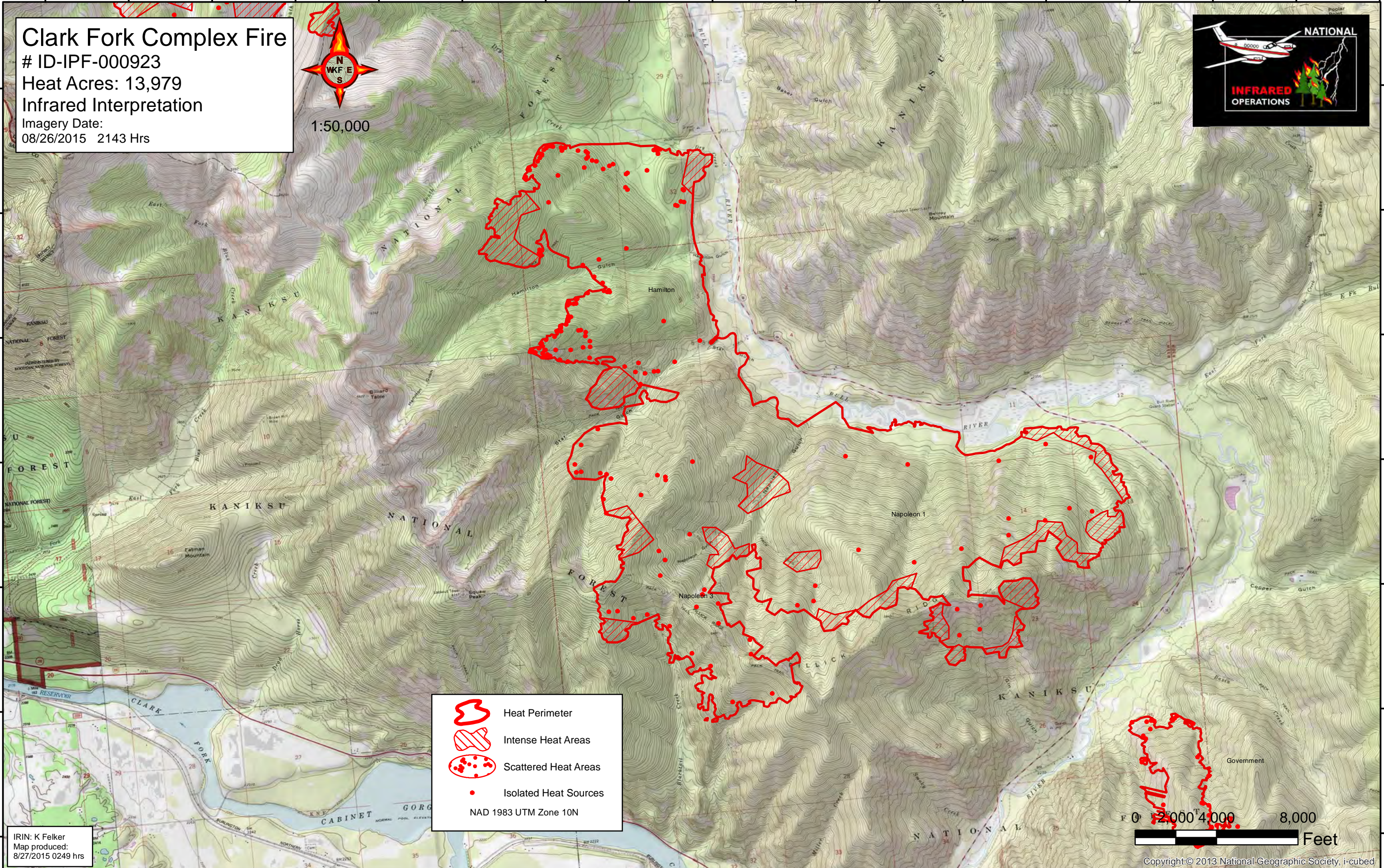
116°0'W 115°59'W 115°58'W 115°57'W 115°56'W 115°55'W 115°54'W 115°53'W 115°52'W 115°51'W 115°50'W 115°49'W 115°48'W 115°47'W 115°46'W 115°45'W 115°44'W





Clark Fork Complex Fire
ID-IPF-000923
Heat Acres: 13,979
Infrared Interpretation
Imagery Date:
08/26/2015 2143 Hrs



48°10'N
48°9'N
48°8'N
48°7'N
48°6'N
48°5'N
48°4'N

48°10'N
48°9'N
48°8'N
48°7'N
48°6'N
48°5'N
48°4'N



-  Heat Perimeter
-  Intense Heat Areas
-  Scattered Heat Areas
-  Isolated Heat Sources

NAD 1983 UTM Zone 10N

IRIN: K Felker
Map produced:
8/27/2015 0249 hrs



Copyright © 2013 National Geographic Society, i-cubed

116°1'W 116°0'W 115°59'W 115°58'W 115°57'W 115°56'W 115°55'W 115°54'W 115°53'W 115°52'W 115°51'W 115°50'W 115°49'W 115°48'W 115°47'W 115°46'W 115°45'W