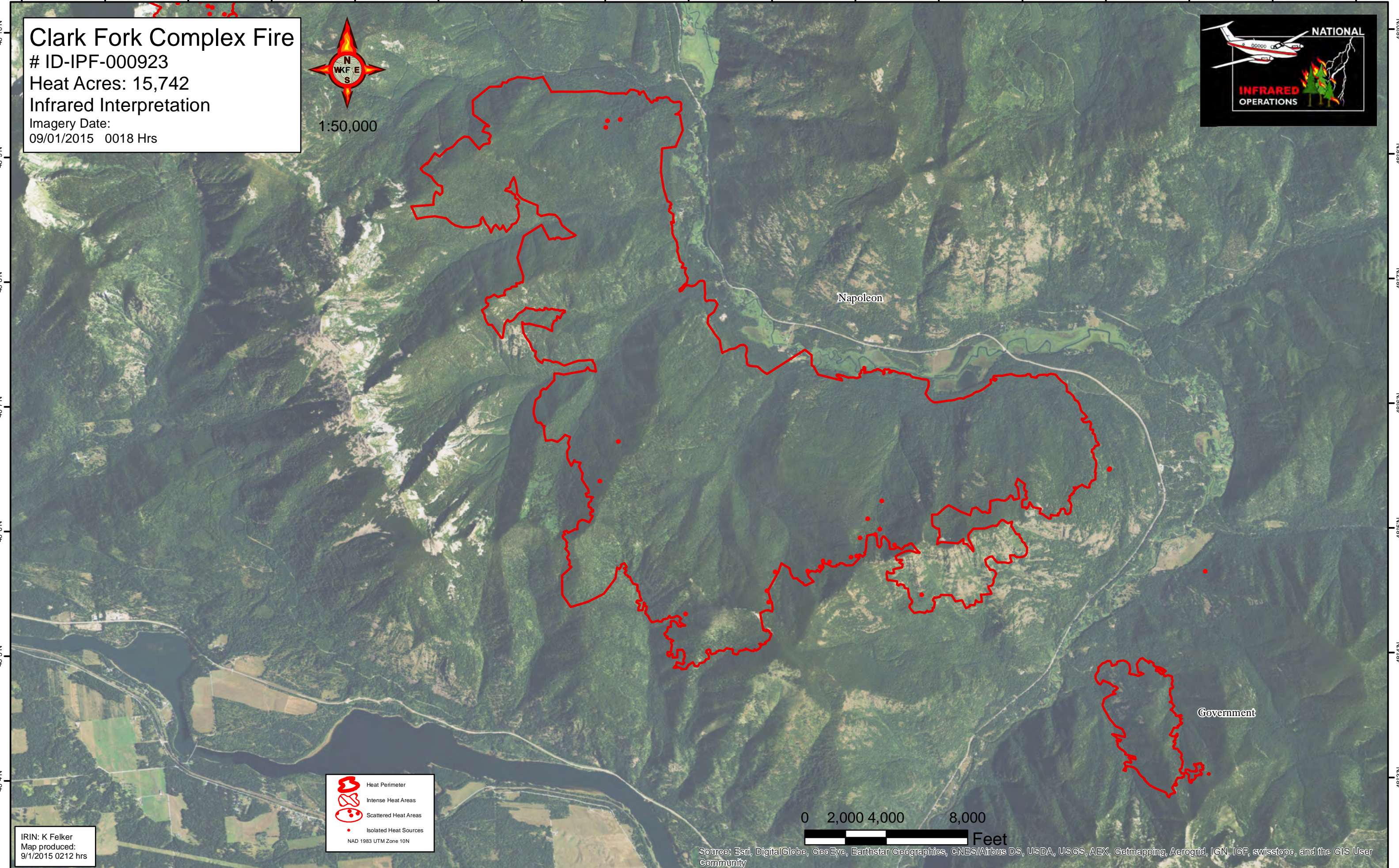






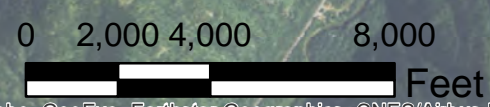
116°0'W 115°59'W 115°58'W 115°57'W 115°56'W 115°55'W 115°54'W 115°53'W 115°52'W 115°51'W 115°50'W 115°49'W 115°48'W 115°47'W 115°46'W 115°45'W 115°44'W



**Clark Fork Complex Fire**  
# ID-IPF-000923  
Heat Acres: 15,742  
Infrared Interpretation  
Imagery Date:  
09/01/2015 0018 Hrs



-  Heat Perimeter
  -  Intense Heat Areas
  -  Scattered Heat Areas
  -  Isolated Heat Sources
- NAD 1983 UTM Zone 10N



IRIN: K Felker  
Map produced:  
9/1/2015 0212 hrs

Source: Esri, DigitalGlobe, GeoEye, Earthstar Geographics, CNES/Airbus DS, USDA, USGS, AEX, Getmapping, Aerogrid, IGN, IGP, swisstopo, and the GIS User Community

116°1'W 116°0'W 115°59'W 115°58'W 115°57'W 115°56'W 115°55'W 115°54'W 115°53'W 115°52'W 115°51'W 115°50'W 115°49'W 115°48'W 115°47'W 115°46'W 115°45'W

48°10'N  
48°9'N  
48°8'N  
48°7'N  
48°6'N  
48°5'N  
48°4'N

48°9'N  
48°8'N  
48°7'N  
48°6'N  
48°5'N  
48°4'N  
48°3'N