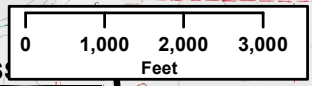


116°11'W 116°11'W 116°10'W 116°8'W 116°8'W 116°7'W 116°6'W 116°5'W 116°4'W 116°3'W 116°2'W

Clearwater Complex
Lawyer 2
ID-NFC-000720
IAP Map
August 19th, 2015
Map Page #3



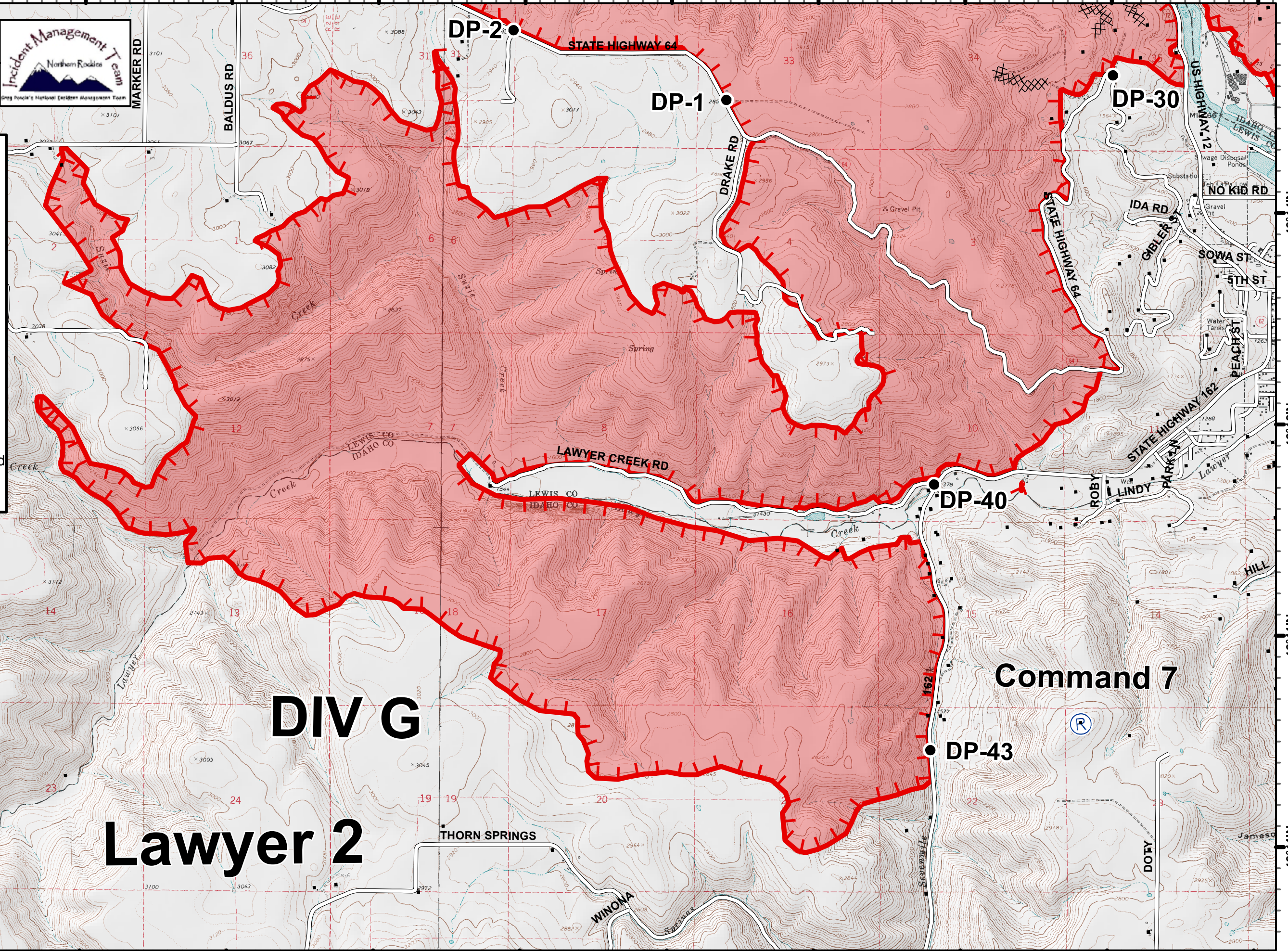
- ICP
- Fire Perimeter
- Uncontrolled Fire Edge
- Controlled Fire Edge
- Fire Location
- Branch Location
- Spot Fire
- Helibase
- Structure
- Repeater
- Spike Camp
- Burn Out Line
- Completed Mechanized Line
- Planned Line



46°14'N
46°13'N
46°11'N
46°11'N

46°14'N
46°13'N
46°11'N
46°11'N

116°11'W 116°11'W 116°10'W 116°8'W 116°8'W 116°7'W 116°6'W 116°5'W 116°4'W 116°3'W 116°2'W



DIV G

Lawyer 2

Command 7

THORN SPRINGS

WINONA

