

116°11'W 116°11'W 116°10'W 116°8'W 116°8'W 116°7'W 116°6'W 116°5'W 116°4'W 116°3'W

**Clearwater Complex**  
Carrot Ridge  
ID-NFC-000720  
IAP Map  
August 20th, 2015  
Map Page #1

# Carrot Ridge

## Fraser Spike

### DIV X

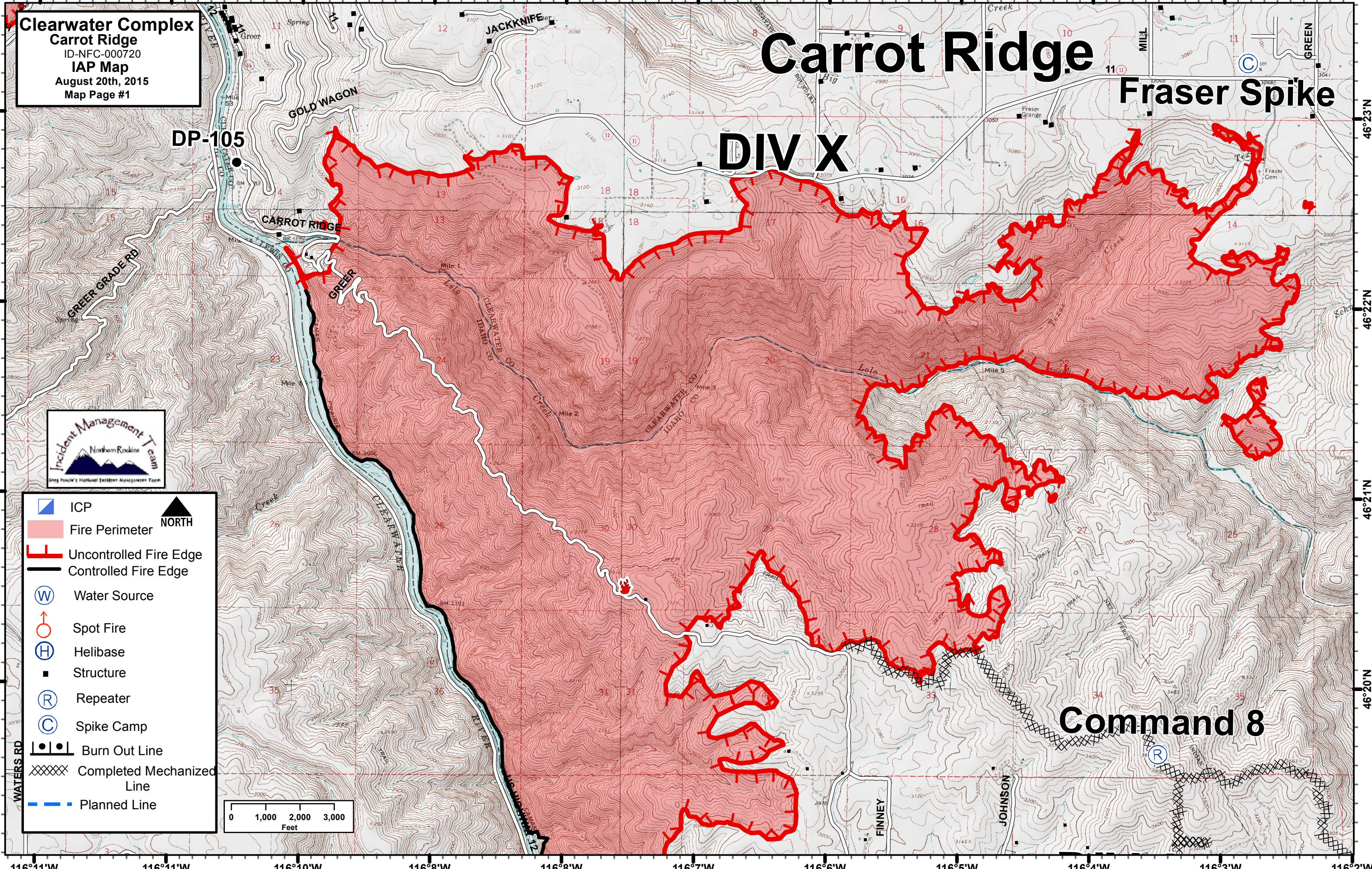
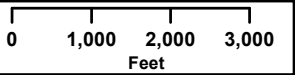
DP-105

CARROT RIDGE

### Command 8



- ICP
- Fire Perimeter
- Uncontrolled Fire Edge
- Controlled Fire Edge
- Water Source
- Spot Fire
- Helibase
- Structure
- Repeater
- Spike Camp
- Burn Out Line
- Completed Mechanized Line
- Planned Line



46°23'N

46°22'N

46°21'N

46°20'N

46°23'N

46°22'N

46°21'N

46°20'N

116°11'W 116°11'W 116°10'W 116°8'W 116°8'W 116°7'W 116°6'W 116°5'W 116°4'W 116°3'W 116°2'W