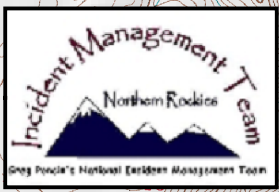

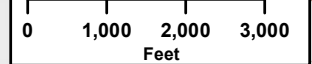


116°11'W 116°11'W 116°10'W 116°8'W 116°8'W 116°7'W 116°6'W 116°5'W 116°4'W 116°3'W

Clearwater Complex
Lawyer 2
ID-NFC-000720
IAP Map
August 20th, 2015
Map Page #2



-  ICP
-  Fire Perimeter
-  Uncontrolled Fire Edge
-  Controlled Fire Edge
-  Water Source
-  Spot Fire
-  Helibase
-  Structure
-  Repeater
-  Spike Camp
-  Burn Out Line
-  Completed Mechanized Line
-  Planned Line



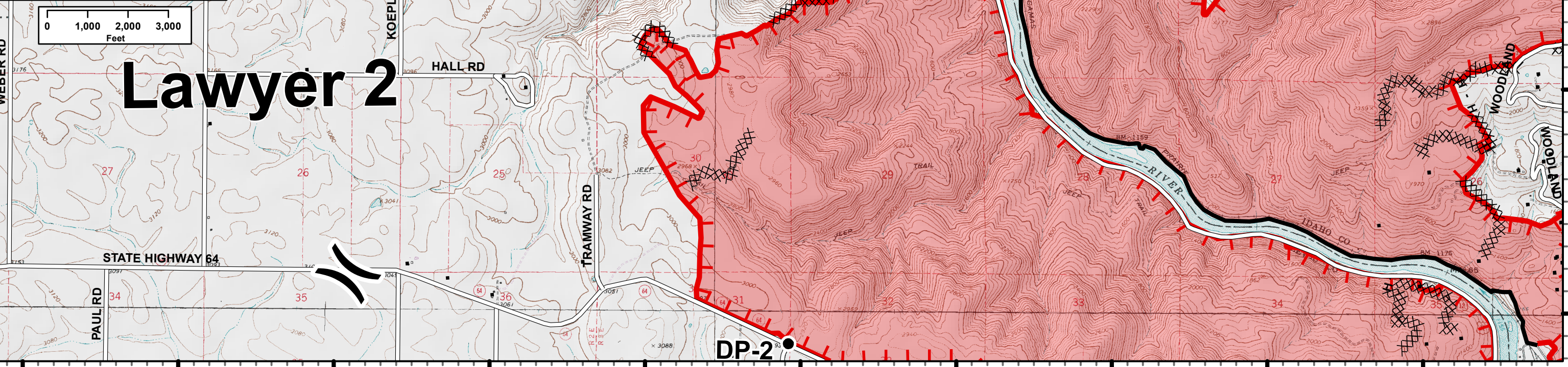
Lawyer 2

DIVA

DIV J

DP-250

DP-2



116°11'W 116°11'W 116°10'W 116°8'W 116°8'W 116°7'W 116°6'W 116°5'W 116°4'W 116°3'W

46°19'N
46°18'N
46°17'N
46°16'N
46°15'N

46°19'N
46°18'N
46°17'N
46°16'N
46°15'N