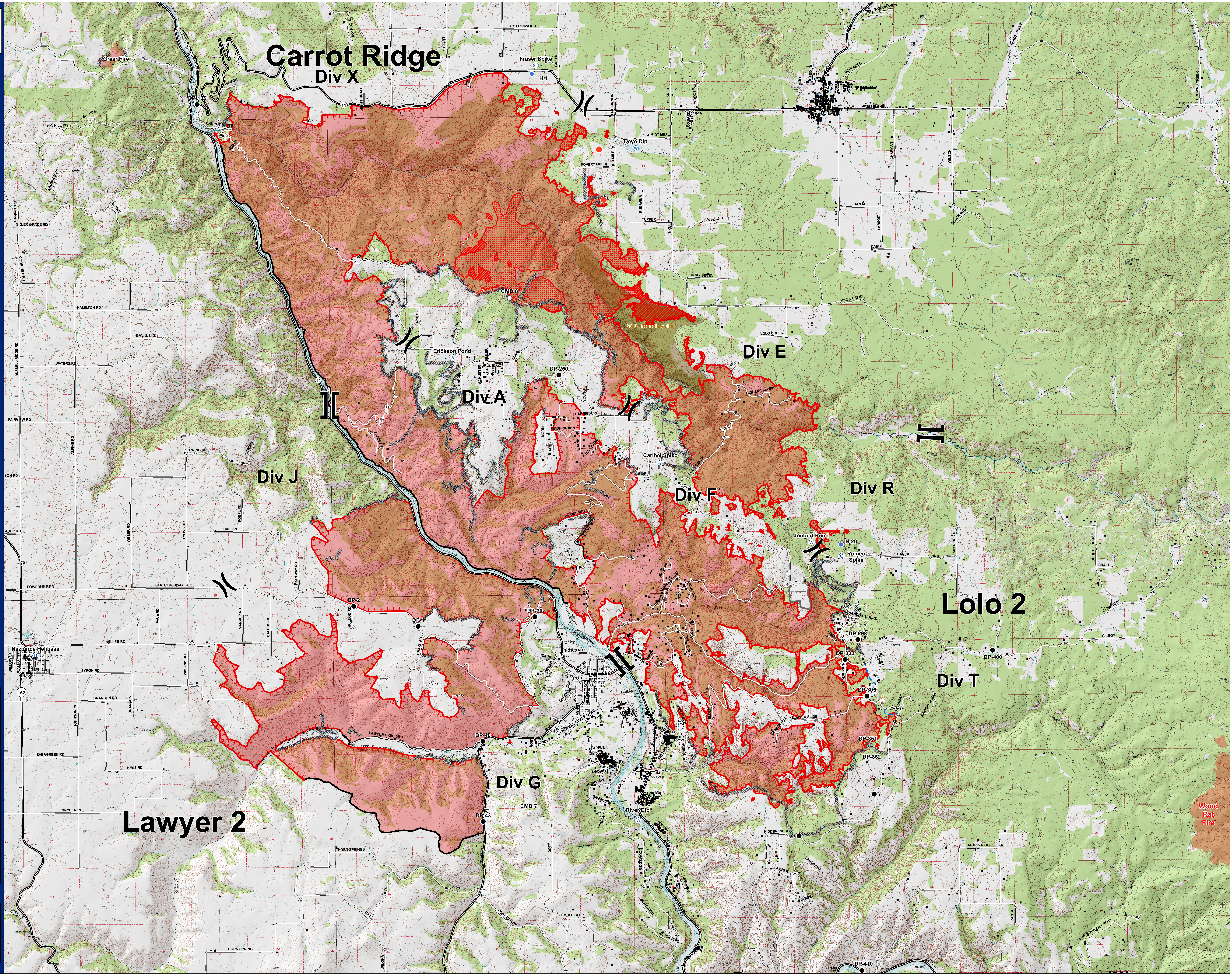


- Drop Point
- Structure
- ⊕ Water Source
- ⊙ Spot Fire
- ⊙ Spike Camp
- ⊙ Repeater
- ⊙ Helibase
- ⊙ ICP
- ⌋ Division Break
- ⌋ Branch Break
- Burn Out Line
- Completed Hand Line
- Completed Mechanized Line
- Natural Feature as Completed Line
- Road as Completed Line
- Planned Line
- Controlled Fire Edge
- Uncontrolled Fire Edge
- Fire Perimeter

- Infrared Data**
- IR_IsolatedHeat
 - IR_ScatteredHeat
 - IR_IntenseHeat
- August 21, 2015 @ 2124 hrs
*** Cloudy conditions prevented complete perimeter coverage



Wood Rat Fire