


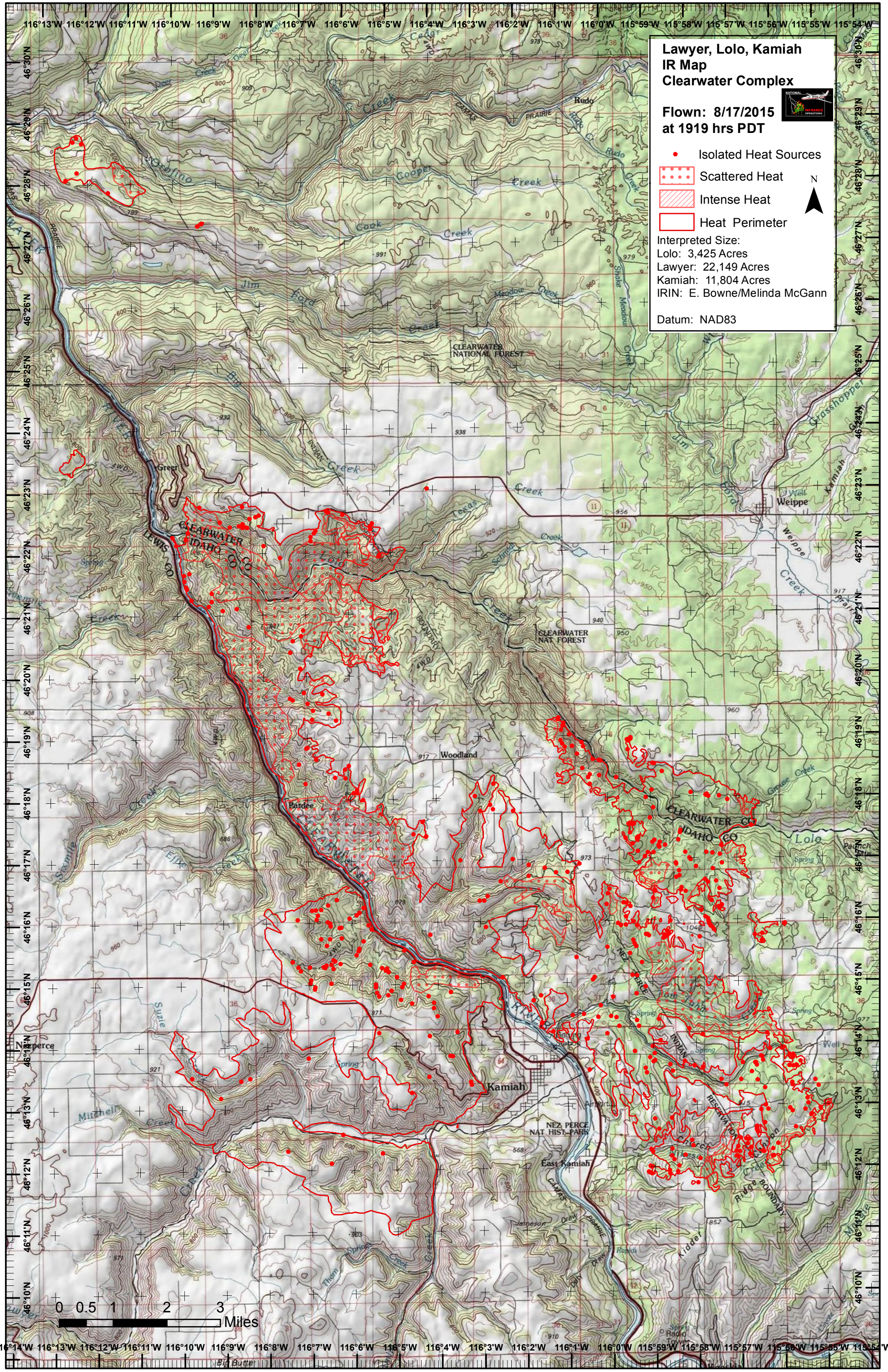
**Lawyer, Lolo, Kamiah  
IR Map  
Clearwater Complex**

**Flown: 8/17/2015  
at 1919 hrs PDT**

• Isolated Heat Sources  
 [Red dotted box] Scattered Heat  
 [Red hatched box] Intense Heat  
 [Red outline box] Heat Perimeter

Interpreted Size:  
 Lolo: 3,425 Acres  
 Lawyer: 22,149 Acres  
 Kamiah: 11,804 Acres  
 IRIN: E. Bowne/Melinda McGann

Datum: NAD83

116°14'W 116°13'W 116°12'W 116°11'W 116°10'W 116°9'W 116°8'W 116°7'W 116°6'W 116°5'W 116°4'W 116°3'W 116°2'W 116°1'W 116°0'W 115°59'W 115°58'W 115°57'W 115°56'W 115°55'W 115°54'W