

116°6'W 116°5'W 116°4'W 116°3'W

46°17'N

46°17'N

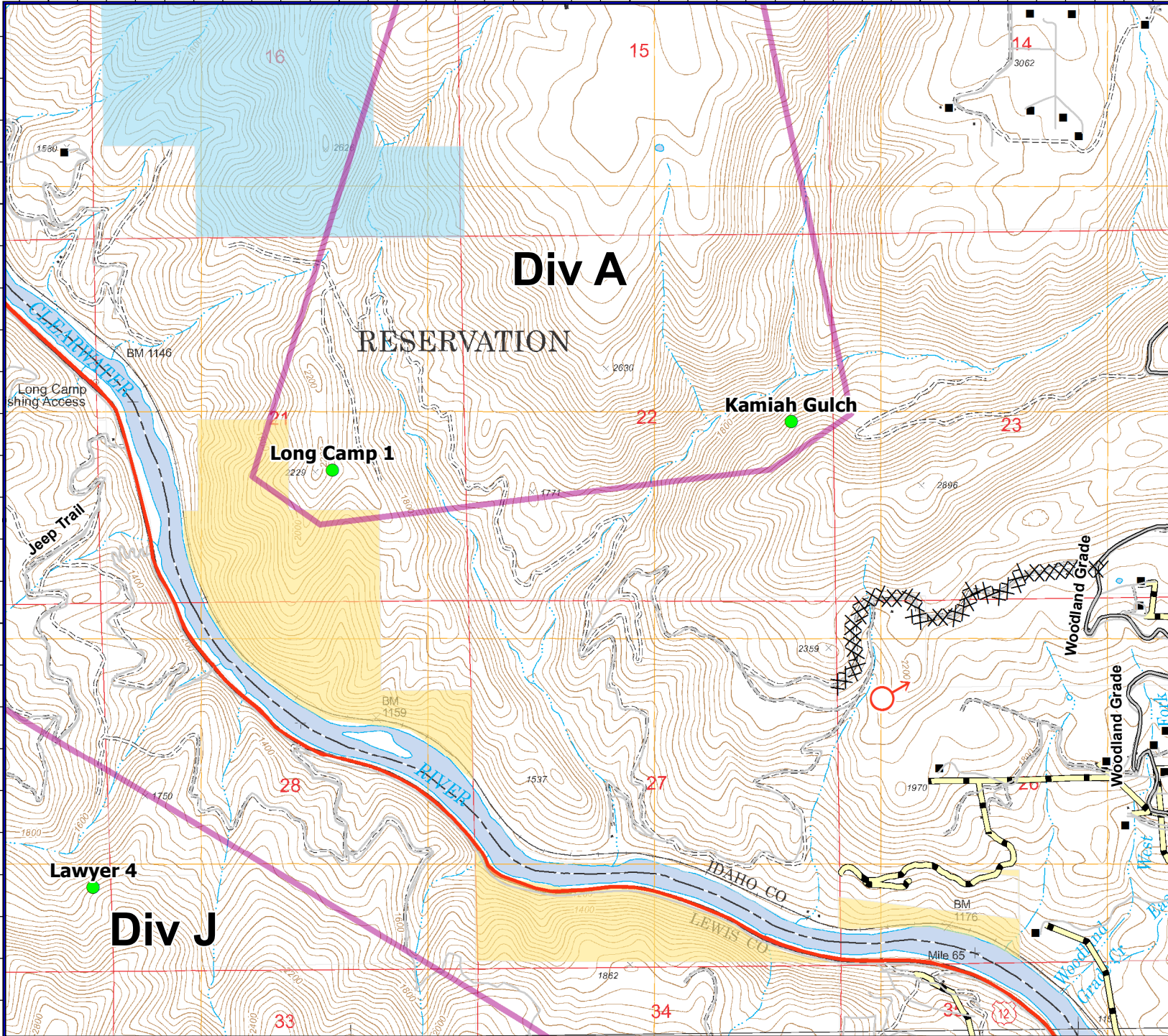
46°16'N

46°16'N

46°15'N

46°15'N

116°6'W 116°5'W 116°4'W 116°3'W



**Ownership**

- US Forest Service
- BLM
- State
- IDFG
- Bennett Lumber
- Potlatch
- Private

**Transportation**

- Highway
- County
- Main
- Secondary
- Road
- Streams
- Divisions
- Reported Fire
- Structures
- Power Lines
- Transmission Lines

