

116°14'0"W 116°13'0"W 116°12'0"W 116°11'0"W 116°10'0"W 116°9'0"W 116°8'0"W 116°7'0"W 116°6'0"W 116°5'0"W 116°4'0"W 116°3'0"W 116°2'0"W 116°1'0"W 116°0'0"W 115°59'0"W 115°58'0"W 115°57'0"W 115°56'0"W

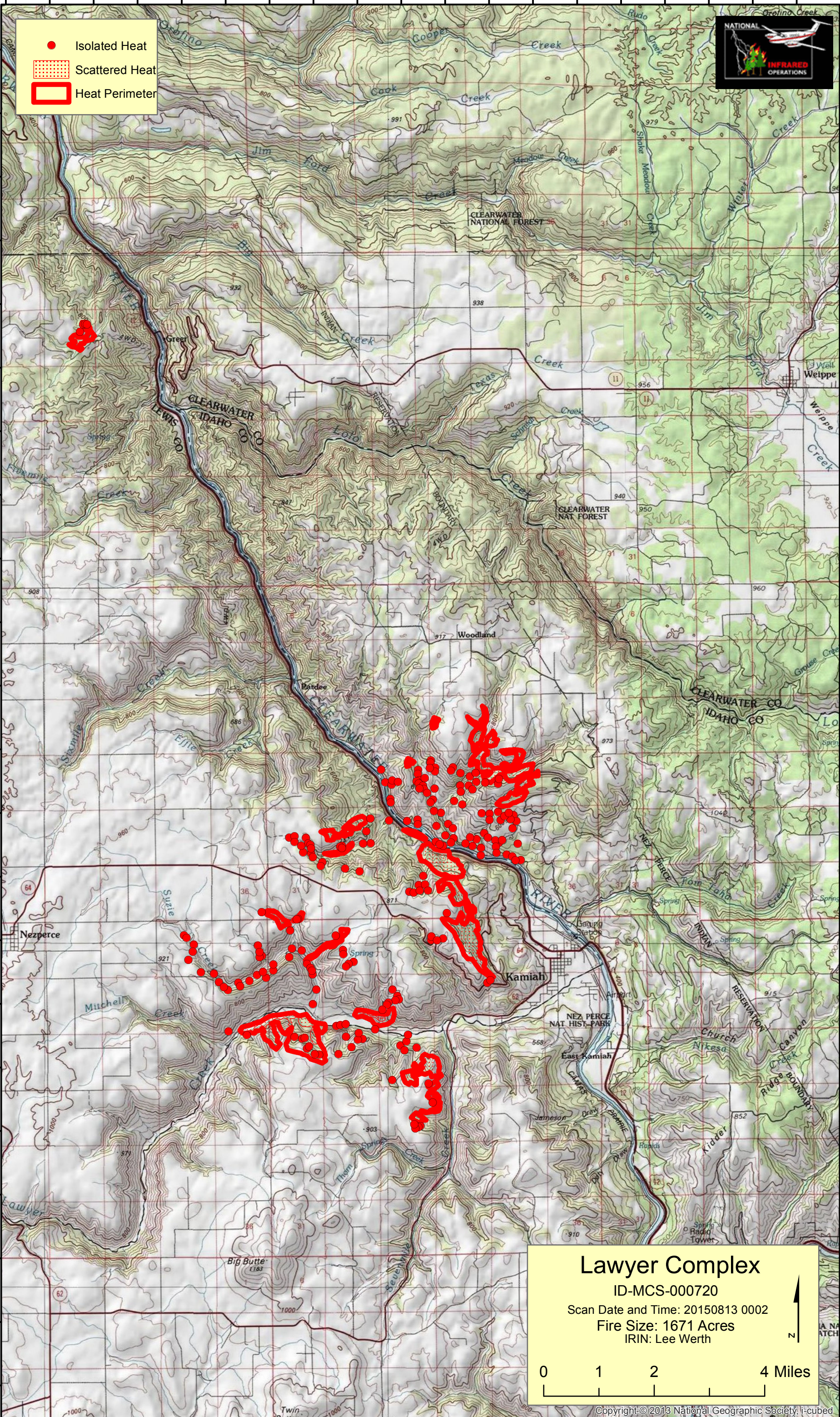
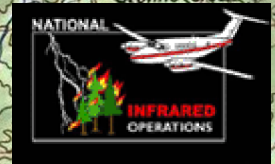
46°28'0"N
46°27'0"N
46°26'0"N
46°25'0"N
46°24'0"N
46°23'0"N
46°22'0"N
46°21'0"N
46°20'0"N
46°19'0"N
46°18'0"N
46°17'0"N
46°16'0"N
46°15'0"N
46°14'0"N
46°13'0"N
46°12'0"N
46°11'0"N
46°10'0"N
46°9'0"N
46°8'0"N
46°7'0"N

46°28'0"N
46°27'0"N
46°26'0"N
46°25'0"N
46°24'0"N
46°23'0"N
46°22'0"N
46°21'0"N
46°20'0"N
46°19'0"N
46°18'0"N
46°17'0"N
46°16'0"N
46°15'0"N
46°14'0"N
46°13'0"N
46°12'0"N
46°11'0"N
46°10'0"N
46°9'0"N
46°8'0"N
46°7'0"N

● Isolated Heat

▨ Scattered Heat

▭ Heat Perimeter



Lawyer Complex
 ID-MCS-000720
 Scan Date and Time: 20150813 0002
 Fire Size: 1671 Acres
 IRIN: Lee Werth

0 1 2 4 Miles

Copyright © 2013 National Geographic Society, i-cubed

116°14'0"W 116°13'0"W 116°12'0"W 116°11'0"W 116°10'0"W 116°9'0"W 116°8'0"W 116°7'0"W 116°6'0"W 116°5'0"W 116°4'0"W 116°3'0"W 116°2'0"W 116°1'0"W 116°0'0"W 115°59'0"W 115°58'0"W 115°57'0"W 115°56'0"W