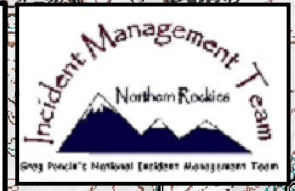


115°53'W 115°51'W 115°49'W 115°47'W 115°45'W 115°43'W 115°41'W 115°38'W 115°37'W 115°35'W 115°33'W 115°31'W 115°29'W 115°26'W 115°25'W

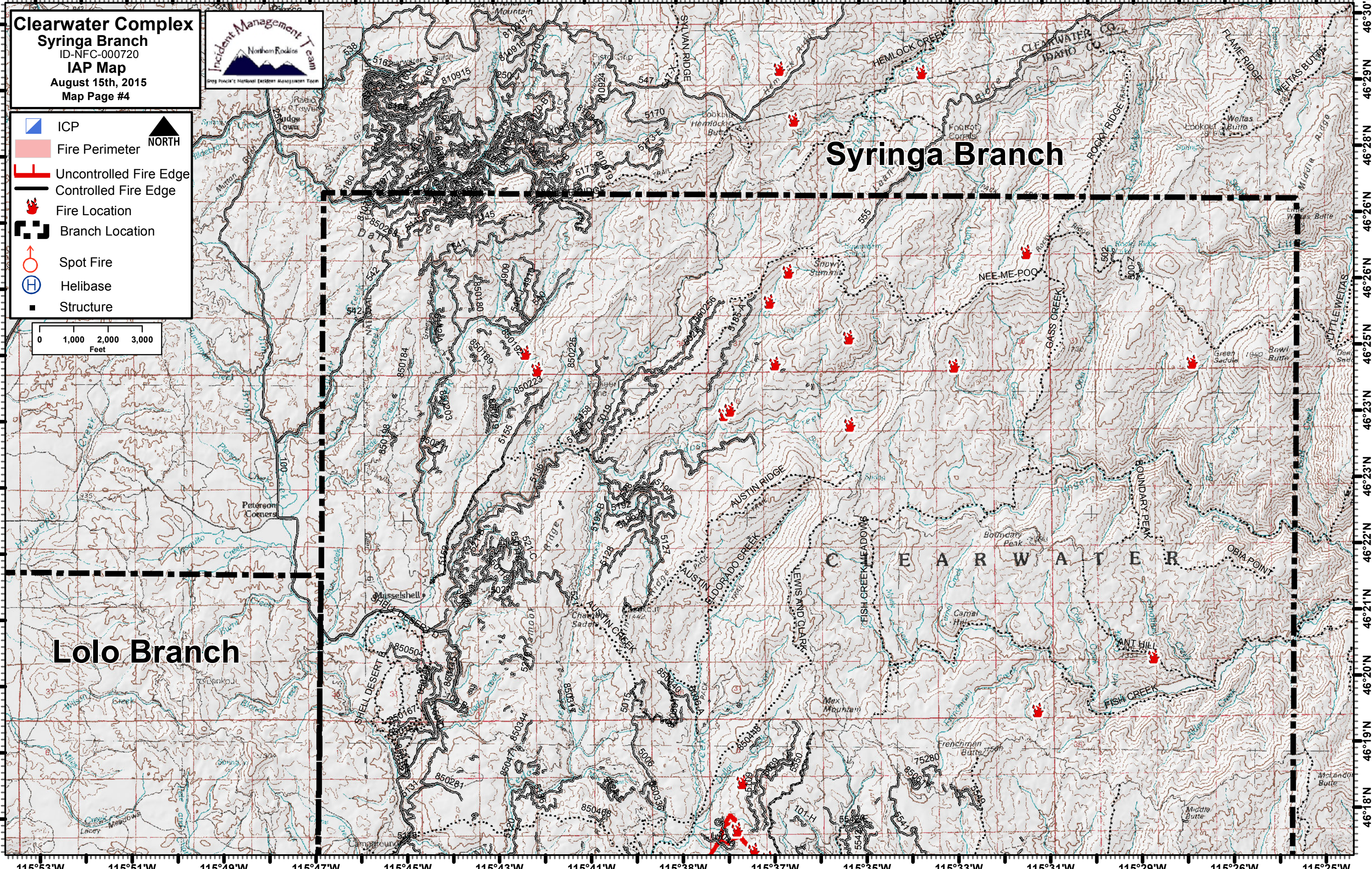
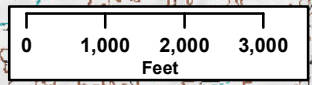
**Clearwater Complex**  
**Syringa Branch**  
 ID-NFC-000720  
**IAP Map**  
 August 15th, 2015  
 Map Page #4



**Legend:**

- ICP
- Fire Perimeter
- Uncontrolled Fire Edge
- Controlled Fire Edge
- Fire Location
- Branch Location
- Spot Fire
- Helibase
- Structure

**NORTH**



115°53'W 115°51'W 115°49'W 115°47'W 115°45'W 115°43'W 115°41'W 115°38'W 115°37'W 115°35'W 115°33'W 115°31'W 115°29'W 115°26'W 115°25'W