

115°47'0"W 115°45'0"W 115°43'0"W 115°41'0"W 115°39'0"W 115°37'0"W 115°35'0"W 115°33'0"W 115°31'0"W 115°29'0"W 115°27'0"W 115°25'0"W

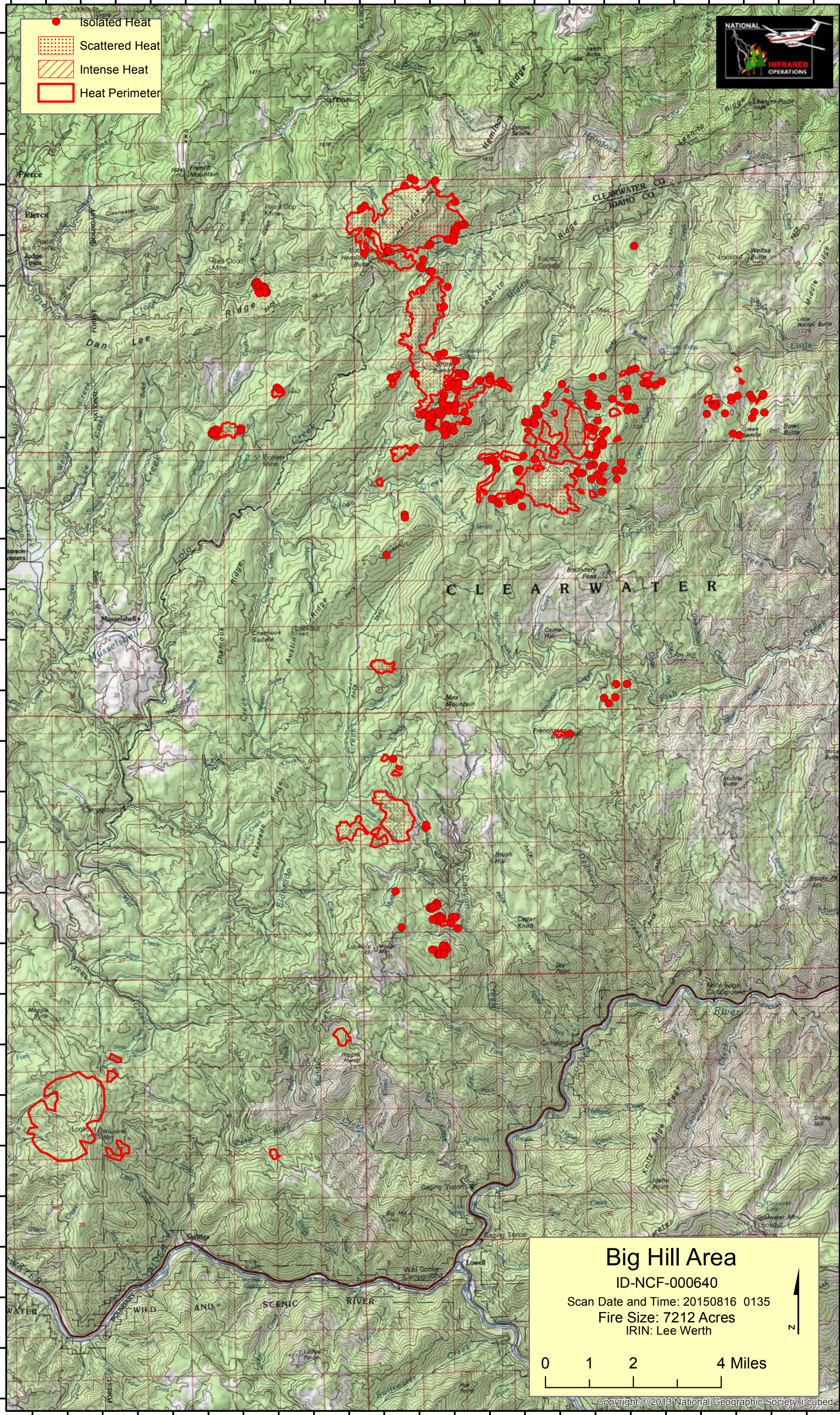
46°33'0"N
46°32'0"N
46°31'0"N
46°30'0"N
46°29'0"N
46°28'0"N
46°27'0"N
46°26'0"N
46°25'0"N
46°24'0"N
46°23'0"N
46°22'0"N
46°21'0"N
46°20'0"N
46°19'0"N
46°18'0"N
46°17'0"N
46°16'0"N
46°15'0"N
46°14'0"N
46°13'0"N
46°12'0"N
46°11'0"N
46°10'0"N
46°9'0"N
46°8'0"N
46°7'0"N
46°6'0"N

● Isolated Heat

▨ Scattered Heat

▨ Intense Heat

▭ Heat Perimeter



Big Hill Area
 ID-NCF-000640
 Scan Date and Time: 20150816 0135
 Fire Size: 7212 Acres
 IRIN: Lee Werth

0 1 2 4 Miles

Copyright © 2013 National Geographic Society, i-cubed

115°48'0"W 115°46'0"W 115°44'0"W 115°42'0"W 115°40'0"W 115°38'0"W 115°36'0"W 115°34'0"W 115°32'0"W 115°30'0"W 115°28'0"W 115°26'0"W