

113°13'W 113°12'W 113°11'W 113°10'W 113°9'W 113°8'W 113°7'W 113°6'W 113°5'W 113°4'W 113°3'W 113°2'W 113°1'W 113°0'W 112°59'W 112°58'W 112°57'W 112°56'W 112°55'W 112°54'W 112°53'W 112°52'W 112°51'W 112°50'W 112°49'W 112°48'W 112°47'W

Air Ops Map Spotted Eagle Fire MT-LCF-5061

4-Sept-2015



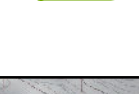
TFR



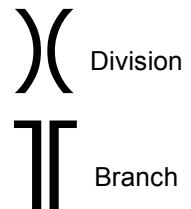
Roads



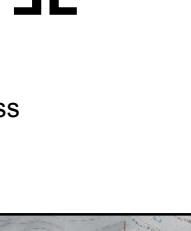
Pvt lands



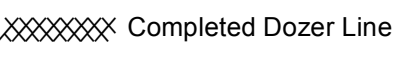
Wilderness



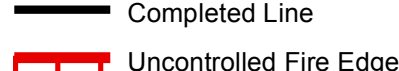
Division



Branch



Completed Dozer Line



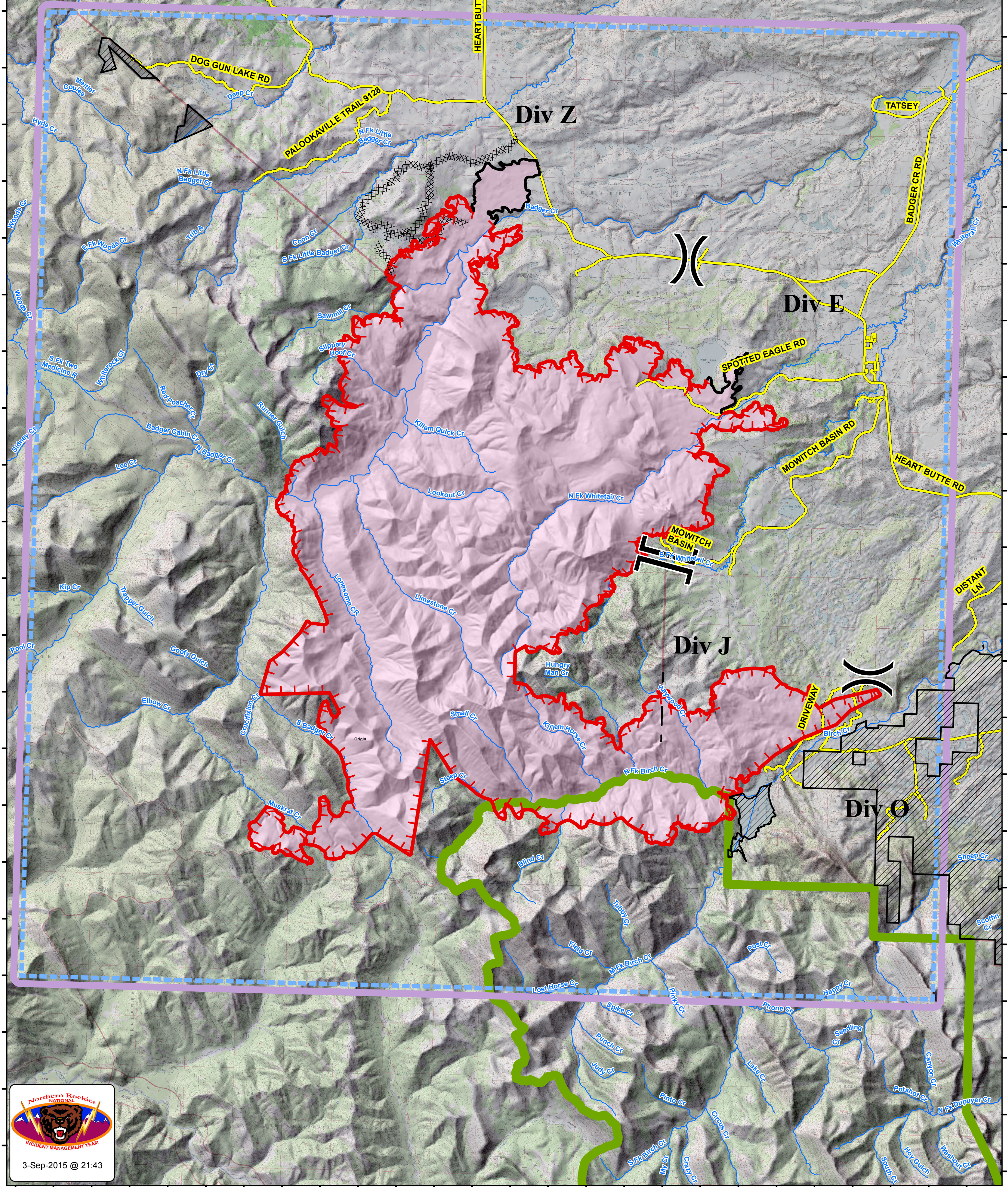
Completed Line



Uncontrolled Fire Edge



Branch I



3-Sep-2015 @ 21:43

113°12'W 113°11'W 113°10'W 113°9'W 113°8'W 113°7'W 113°6'W 113°5'W 113°4'W 113°3'W 113°2'W 113°1'W 113°0'W 112°59'W 112°58'W 112°57'W 112°56'W 112°55'W 112°54'W 112°53'W 112°52'W 112°51'W 112°50'W 112°49'W 112°48'W 112°47'W